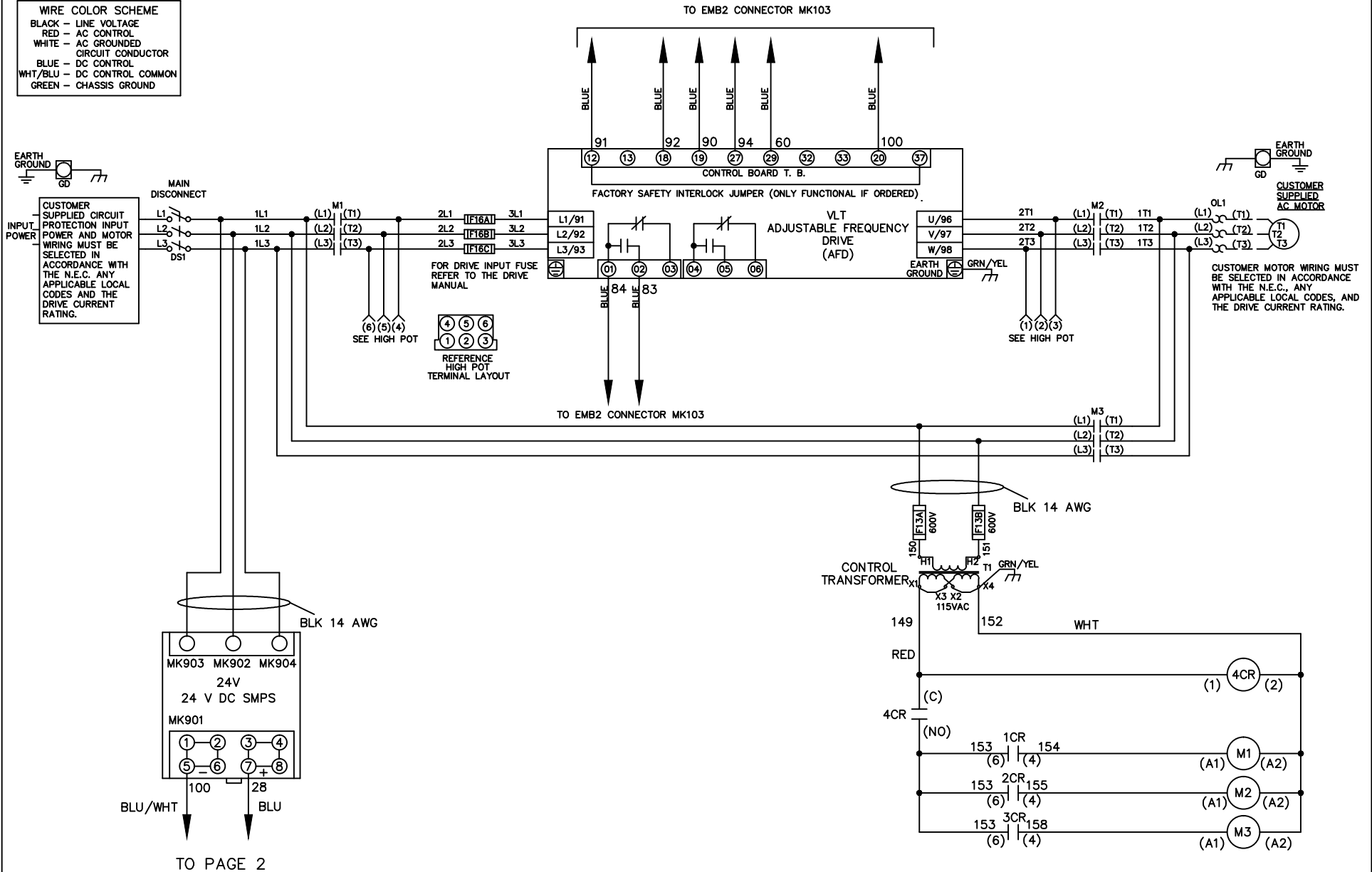


WIRE COLOR SCHEME
 BLACK - LINE VOLTAGE
 RED - AC CONTROL
 WHITE - AC GROUNDED
 CIRCUIT CONDUCTOR
 BLUE - DC CONTROL
 WHT/BLU - DC CONTROL COMMON
 GREEN - CHASSIS GROUND

CUSTOMER SUPPLIED CIRCUIT PROTECTION INPUT POWER AND MOTOR WIRING MUST BE SELECTED IN ACCORDANCE WITH THE N.E.C. ANY APPLICABLE LOCAL CODES AND THE DRIVE CURRENT RATING.

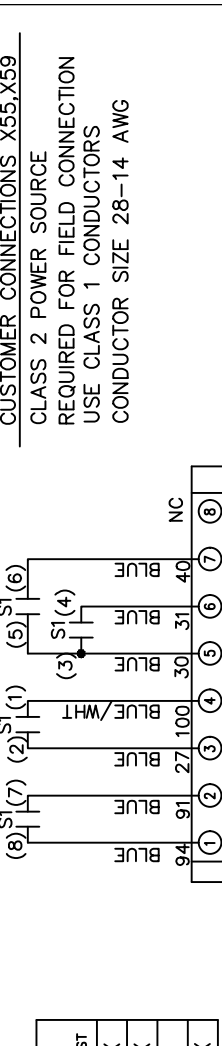


TO PAGE 2

			- NOTICE -		DRN JNW 3/2/11		NAMEDWG,P5, EMB2,NFD, 600V,P656		<i>Danfoss</i>	
001			THIS DOCUMENT CONTAINS PROPRIETARY INFORMATION OF DANFOSS DRIVES. IT IS LOANED BY DANFOSS DRIVES SUBJECT TO THE CONDITIONS THAT IT AND THE INFORMATION EMBODIED THEREIN SHALL BE USED ONLY FOR RECORD AND REFERENCE PURPOSES. THEREIN SHALL NOT BE USED OR CAUSED TO BE USED IN ANY WAY PREJUDICIAL TO THE INTERESTS OF DANFOSS DRIVES, SHALL NOT BE REPRODUCED OR COPIED IN WHOLE OR IN PART, OR DISCLOSED TO ANYONE WITHOUT THE DIRECT WRITTEN PERMISSION OF DANFOSS DRIVES AND SHALL BE RETURNED UPON REQUEST.			APR	MODEL	PAGE 1 OF 2	SIZE A	DWG NO. 177R0269
REV	ECN	DATE								

CONTACT SEQUENCE CHART FOR S1
X INDICATES CONTACT CLOSED

POSITION	DRIVE	OFF	BYPASS	TEST
CONTACT				
1-2	X			X
3-4			X	X
5-6	X			
7-8				X



CUSTOMER CONNECTIONS X55, X59
CLASS 2 POWER SOURCE
REQUIRED FOR FIELD CONNECTION
USE CLASS 1 CONDUCTORS
CONDUCTOR SIZE 28-14 AWG

- NOTICE -
THIS DOCUMENT CONTAINS PROPRIETARY INFORMATION OF DANFOSS DRIVES. IT IS LOANED BY DANFOSS DRIVES SUBJECT TO THE CONDITIONS THAT IT AND THE INFORMATION EMBODIED THEREIN SHALL BE USED ONLY FOR RECORD AND REFERENCE PURPOSES, SHALL NOT BE USED OR CAUSED TO BE USED IN ANY WAY PREJUDICIAL TO THE INTERESTS OF DANFOSS DRIVES, SHALL NOT BE REPRODUCED OR COPIED IN WHOLE OR IN PART, OR DISCLOSED TO ANYONE WITHOUT THE DIRECT WRITTEN PERMISSION OF DANFOSS DRIVES AND SHALL BE RETURNED UPON REQUEST.

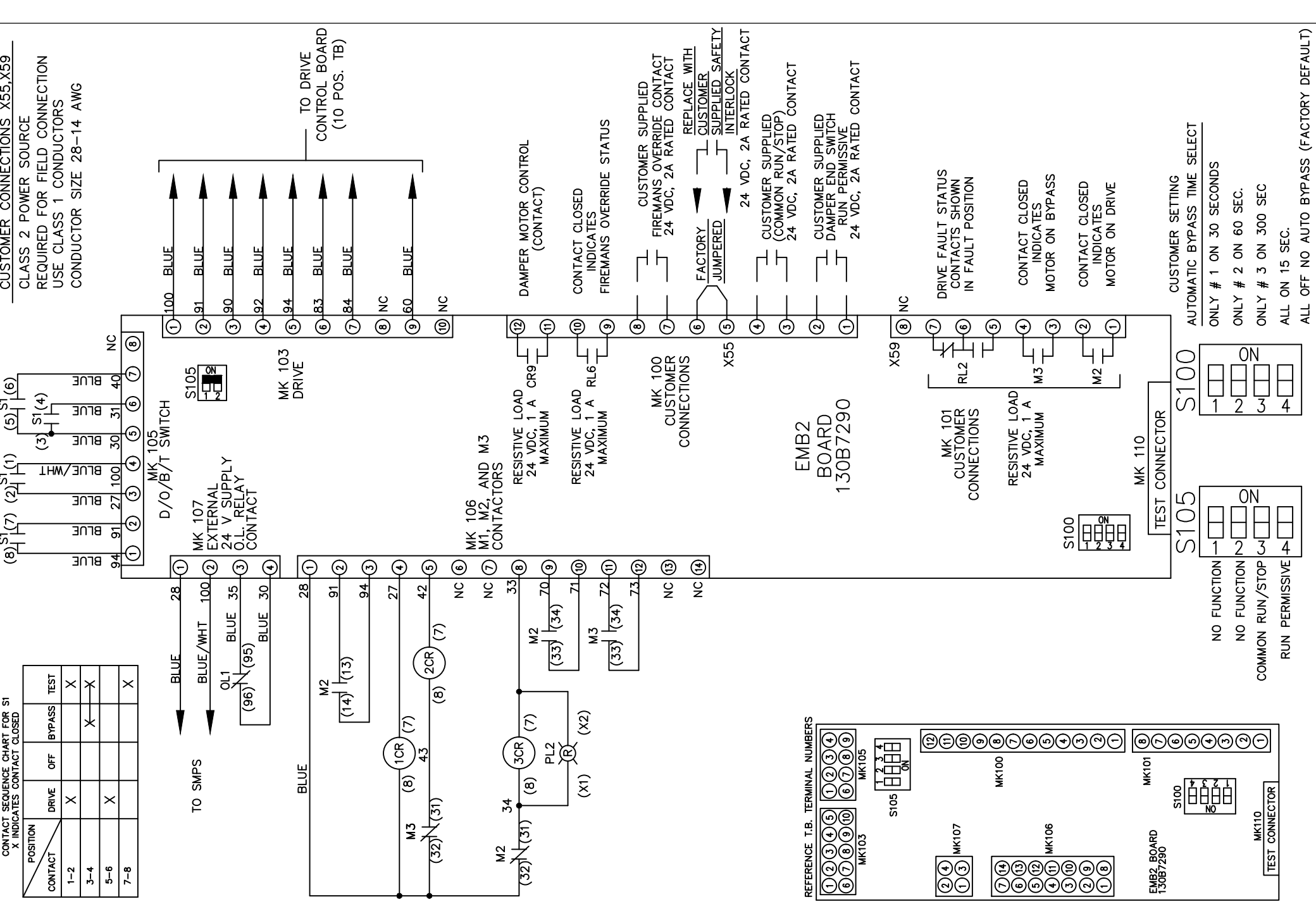
DRN JNW
3/2/11
APR

NAMEDWG,P5,
EMB2,NFD,
600V,P656
MODEL

PAGE 2 OF 2

SIZE A

DWG NO. 177R0269



CUSTOMER CONNECTIONS X55, X59
CLASS 2 POWER SOURCE
REQUIRED FOR FIELD CONNECTION
USE CLASS 1 CONDUCTORS
CONDUCTOR SIZE 28-14 AWG

TO DRIVE CONTROL BOARD (10 POS. TB)

DAMPERS MOTOR CONTROL (CONTACT)

CONTACT CLOSED INDICATES FIREMANS OVERRIDE STATUS

CUSTOMER SUPPLIED FIREMANS OVERRIDE CONTACT 24 VDC, 2A RATED CONTACT

REPLACE WITH CUSTOMER SUPPLIED SAFETY INTERLOCK 24 VDC, 2A RATED CONTACT

CUSTOMER SUPPLIED (COMMON RUN/STOP) 24 VDC, 2A RATED CONTACT

CUSTOMER SUPPLIED DAMPER END SWITCH RUN PERMISSIVE 24 VDC, 2A RATED CONTACT

DRIVE FAULT STATUS CONTACTS SHOWN IN FAULT POSITION

CONTACT CLOSED INDICATES MOTOR ON BYPASS

CONTACT CLOSED INDICATES MOTOR ON DRIVE

CUSTOMER SETTING AUTOMATIC BYPASS TIME SELECT ONLY # 1 ON 30 SECONDS ONLY # 2 ON 60 SEC. ONLY # 3 ON 300 SEC ALL ON 15 SEC. ALL OFF NO AUTO BYPASS (FACTORY DEFAULT)

RESISTIVE LOAD 24 VDC, 1 A MAXIMUM

RESISTIVE LOAD 24 VDC, 1 A MAXIMUM

RESISTIVE LOAD 24 VDC, 1 A MAXIMUM

NO FUNCTION

NO FUNCTION

COMMON RUN/STOP

RUN PERMISSIVE