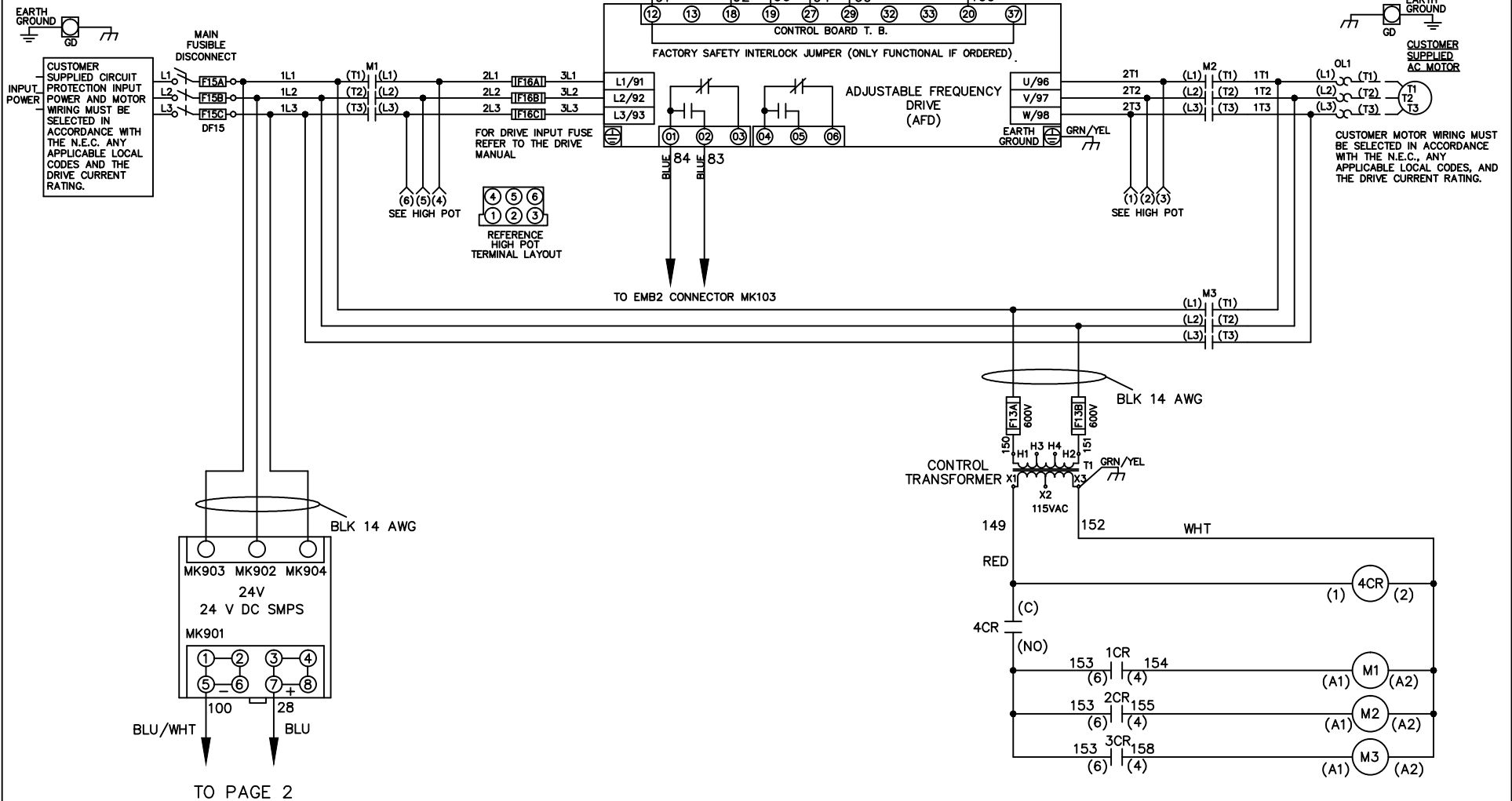


**WIRE COLOR SCHEME**  
 BLACK - LINE VOLTAGE  
 RED - AC CONTROL  
 WHITE - AC GROUNDED  
 CIRCUIT CONDUCTOR  
 BLUE - DC CONTROL  
 WHT/BLU - DC CONTROL COMMON  
 GREEN - CHASSIS GROUND



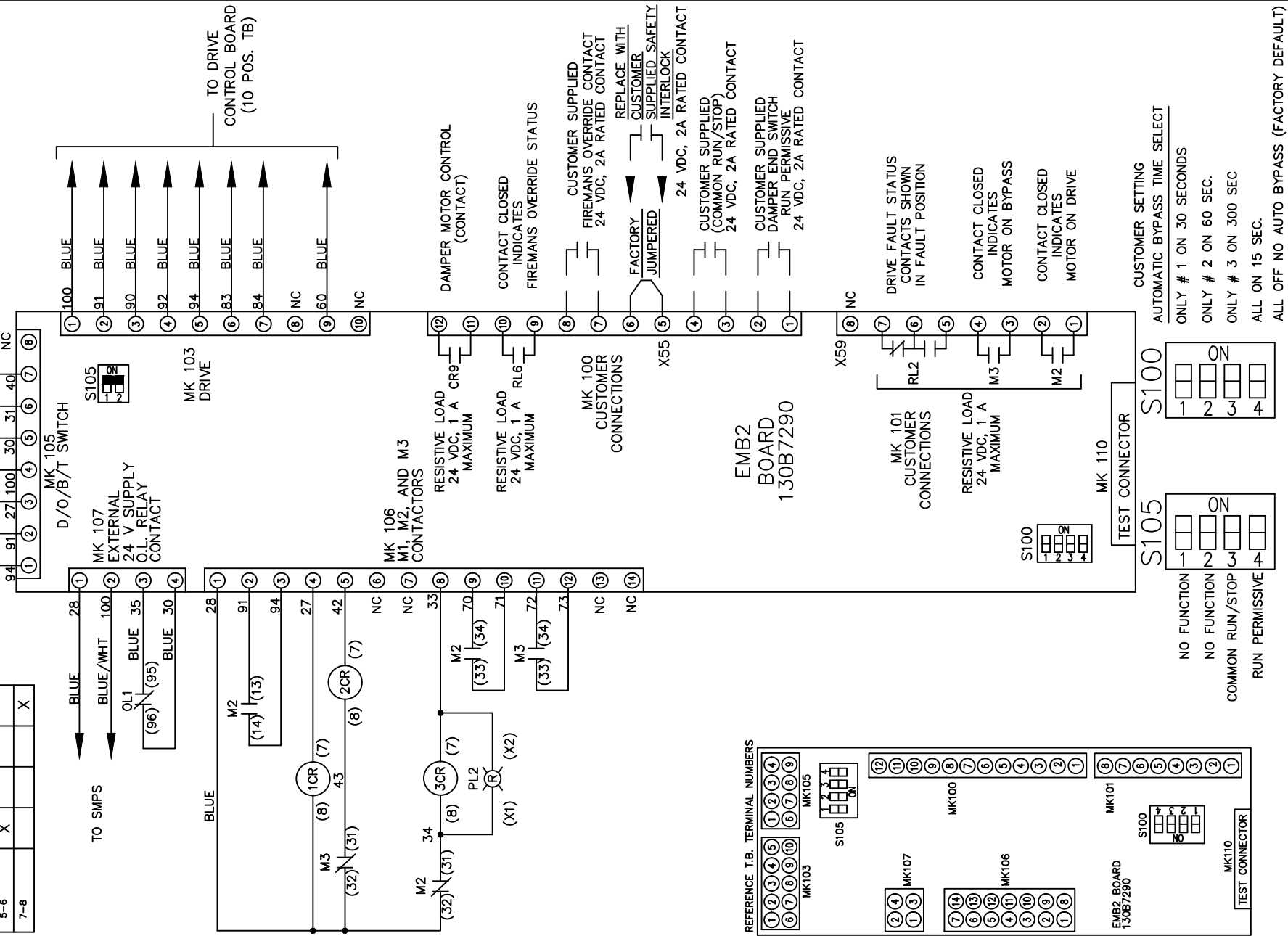
TO PAGE 2

			-NOTICE-	DRN JNW	NAMEDWG,P5, EMB2,FD, 208V		THE TRANE COMPANY	
			THIS DRAWING IS PROPRIETARY AND SHALL NOT BE COPIED OR ITS CONTENTS DISCLOSED TO OUTSIDE PARTIES WITHOUT THE WRITTEN CONSENT OF THE TRANE COMPANY	3/2/11			A DIVISION OF AMERICAN STANDARD INC.	
002	LP11061	9/23/11		APR	MODEL	PAGE 1 OF 2	SIZE A	DWG NO. 177R0312
REV	ECN	DATE						

CONTACT SEQUENCE CHART FOR S1  
X INDICATES CONTACT CLOSED

POSITION	DRIVE	OFF	BYPASS	TEST
CONTACT				
1-2	X			X
3-4			X	X
5-6	X			
7-8				X

CUSTOMER CONNECTIONS X55, X59  
CLASS 2 POWER SOURCE  
REQUIRED FOR FIELD CONNECTION  
USE CLASS 1 CONDUCTORS  
CONDUCTOR SIZE 28-14 AWG



CUSTOMER CONNECTIONS X55, X59  
CLASS 2 POWER SOURCE  
REQUIRED FOR FIELD CONNECTION  
USE CLASS 1 CONDUCTORS  
CONDUCTOR SIZE 28-14 AWG

002	LP11061	9/23/11
REV	ECN	DATE

-NOTICE-  
THIS DRAWING IS PROPRIETARY AND SHALL NOT  
BE COPIED OR ITS CONTENTS DISCLOSED TO  
OUTSIDE PARTIES WITHOUT THE WRITTEN  
CONSENT OF THE TRANE COMPANY

DRN JNW  
3/2/11  
APR

NAMEDWG,P5,  
EMB2,FD,  
208V  
MODEL

PAGE 2 OF 2

SIZE A

DWG No. 177R0312  
THE TRANE COMPANY  
A DIVISION OF  
AMERICAN STANDARD INC.