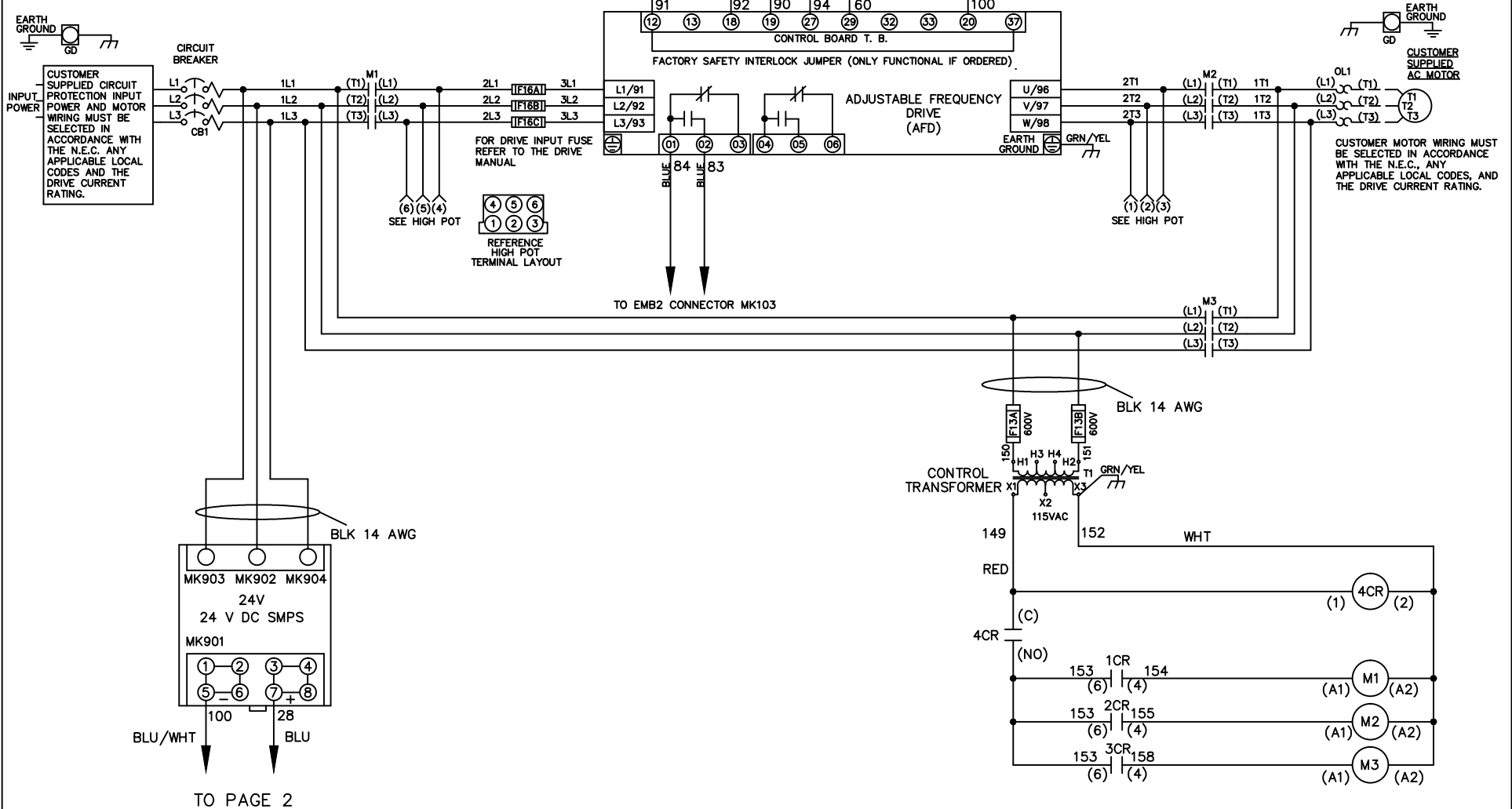


**WIRE COLOR SCHEME**  
 BLACK - LINE VOLTAGE  
 RED - AC CONTROL  
 WHITE - AC GROUNDED  
 CIRCUIT CONDUCTOR  
 BLUE - DC CONTROL  
 WHT/BLU - DC CONTROL COMMON  
 GREEN - CHASSIS GROUND

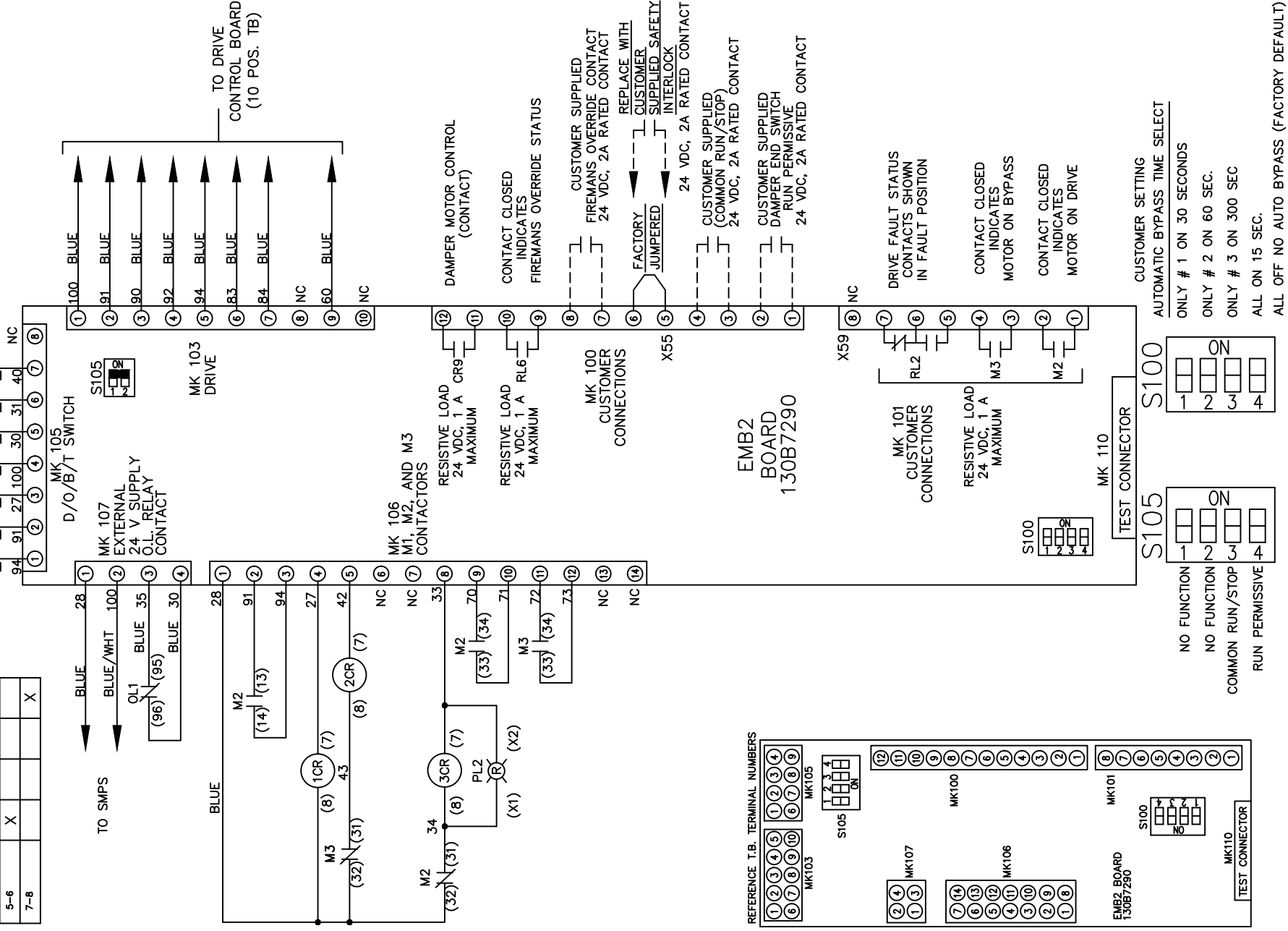


			-NOTICE-	DRN JNW	NAMEDWG,P5, EMB2,CB, 208V		THE TRANE COMPANY	
			THIS DRAWING IS PROPRIETARY AND SHALL NOT BE COPIED OR ITS CONTENTS DISCLOSED TO OUTSIDE PARTIES WITHOUT THE WRITTEN CONSENT OF THE TRANE COMPANY	3/2/11			A DIVISION OF AMERICAN STANDARD INC.	
002	LP11061	9/23/11		APR	MODEL	PAGE 1 OF 2	SIZE A	DWG NO. 177R0316
REV	ECN	DATE						

CONTACT SEQUENCE CHART FOR S1  
X INDICATES CONTACT CLOSED

POSITION	DRIVE	OFF	BYPASS	TEST
CONTACT	X			X
1-2	X		X	X
3-4				
5-6	X			
7-8				X

CUSTOMER CONNECTIONS X55,X59  
CLASS 2 POWER SOURCE  
REQUIRED FOR FIELD CONNECTION  
USE CLASS 1 CONDUCTORS  
CONDUCTOR SIZE 28-14 AWG



-NOTICE-

THIS DRAWING IS PROPRIETARY AND SHALL NOT BE COPIED OR ITS CONTENTS DISCLOSED TO OUTSIDE PARTIES WITHOUT THE WRITTEN CONSENT OF THE TRANE COMPANY

DRN JNW  
3/2/11  
APR

NAMEDWG,P5,  
EMB2,CB,  
208V

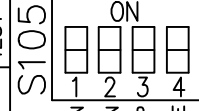
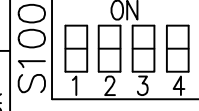
THE TRANE COMPANY  
A DIVISION OF  
AMERICAN STANDARD INC.

002	LP11061	9/23/11
REV	ECN	DATE

MODEL PAGE 2 OF 2 SIZE A DWG NO. 177R0316

CUSTOMER SETTING  
AUTOMATIC BYPASS TIME SELECT

ONLY # 1 ON 30 SECONDS  
ONLY # 2 ON 60 SEC.  
ONLY # 3 ON 300 SEC  
ALL ON 15 SEC.



REFERENCE T.B. TERMINAL NUMBERS

