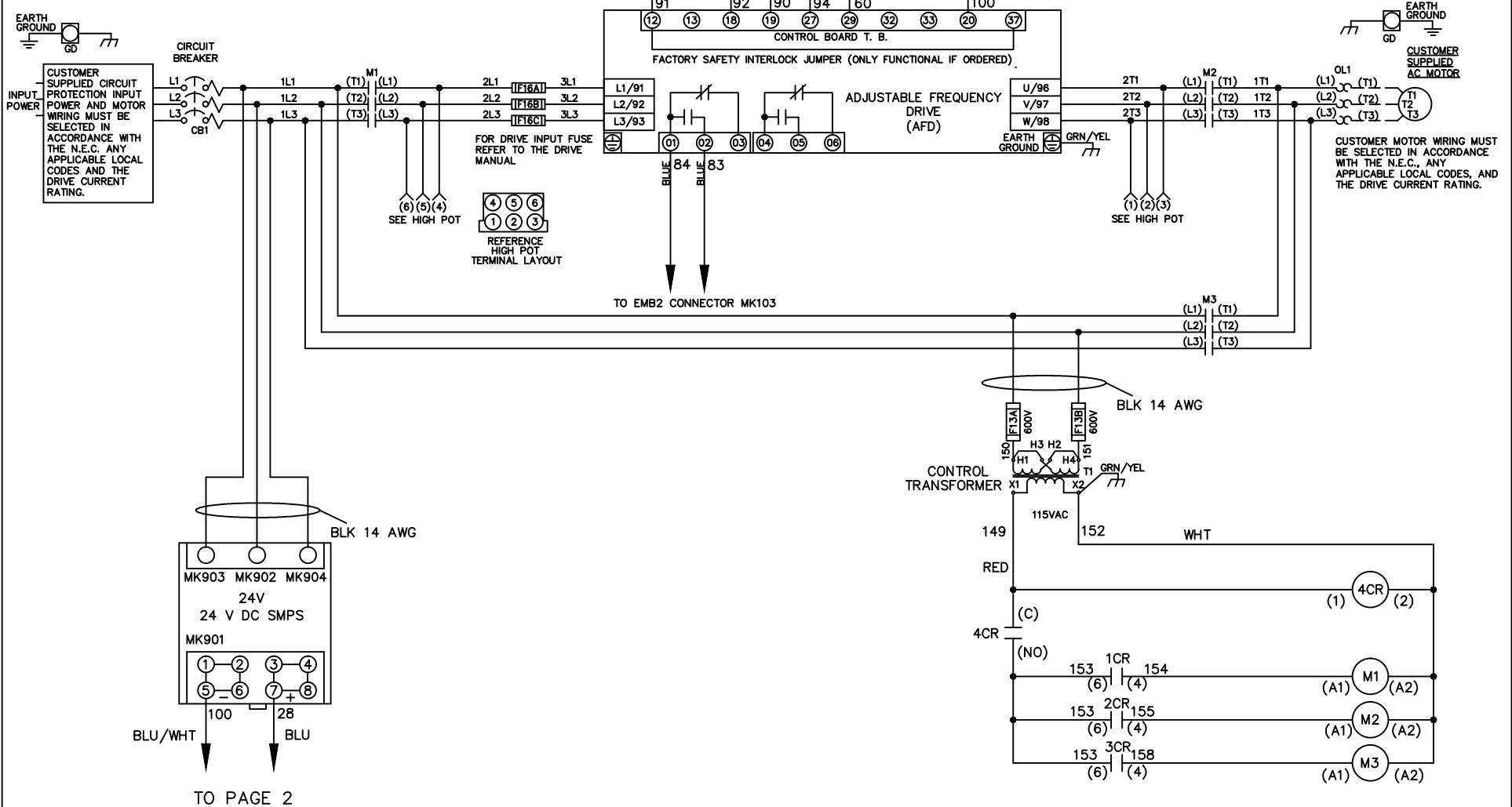


WIRE COLOR SCHEME
 BLACK - LINE VOLTAGE
 RED - AC CONTROL
 WHITE - AC GROUNDED
 CIRCUIT CONDUCTOR
 BLUE - DC CONTROL
 WHT/BLU - DC CONTROL COMMON
 GREEN - CHASSIS GROUND



-NOTICE-

THIS DRAWING IS PROPRIETARY AND SHALL NOT BE COPIED OR ITS CONTENTS DISCLOSED TO OUTSIDE PARTIES WITHOUT THE WRITTEN CONSENT OF THE TRANE COMPANY

DRN JNW
3/2/11

APR

NAMEDWG,P5,
EMB2,CB,
230V

MODEL

THE TRANE COMPANY
A DIVISION OF
AMERICAN STANDARD INC.

002	LP11061	9/23/11
REV	ECN	DATE

PAGE 1 OF 2

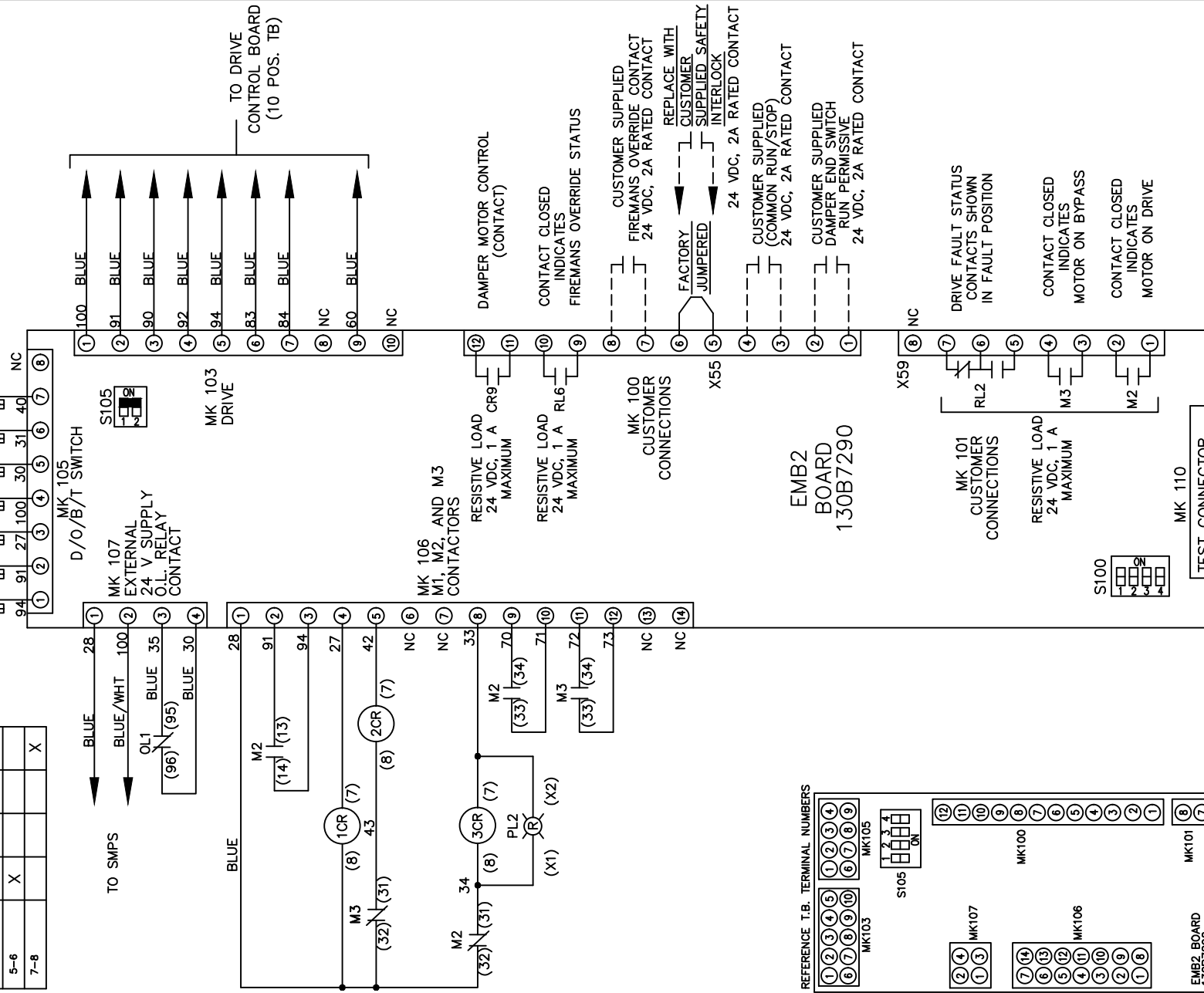
SIZE A

DWG NO.

177R0317

CONTACT SEQUENCE CHART FOR S1 X INDICATES CONTACT CLOSED			
POSITION	DRIVE	OFF	TEST
CONTACT	X		X
1-2	X		X
3-4	X		X
5-6	X		X
7-8			X

CUSTOMER CONNECTIONS X55,X59
CLASS 2 POWER SOURCE
REQUIRED FOR FIELD CONNECTION
USE CLASS 1 CONDUCTORS
CONDUCTOR SIZE 28-14 AWG



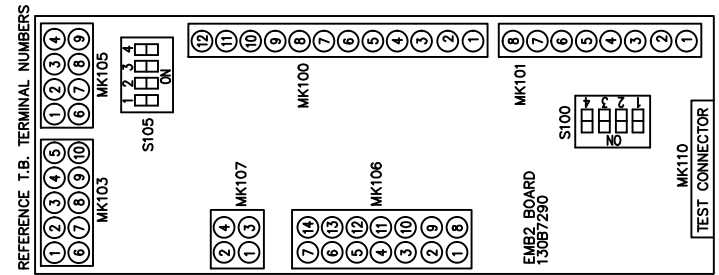
S100

CUSTOMER SETTING
AUTOMATIC BYPASS TIME SELECT

ONLY # 1 ON 30 SECONDS
ONLY # 2 ON 60 SEC.
ONLY # 3 ON 300 SEC
ALL ON 15 SEC.

S105

NO FUNCTION
NO FUNCTION
COMMON RUN/STOP
RUN PERMISSIVE



-NOTICE-

THIS DRAWING IS PROPRIETARY AND SHALL NOT BE COPIED OR ITS CONTENTS DISCLOSED TO OUTSIDE PARTIES WITHOUT THE WRITTEN CONSENT OF THE TRANE COMPANY

DRN JNW
3/2/11
APR

NAMEDWG,P5,
EMB2,CB,
230V

THE TRANE COMPANY
A DIVISION OF
AMERICAN STANDARD INC.

002	LP11061	9/23/11
REV	ECN	DATE