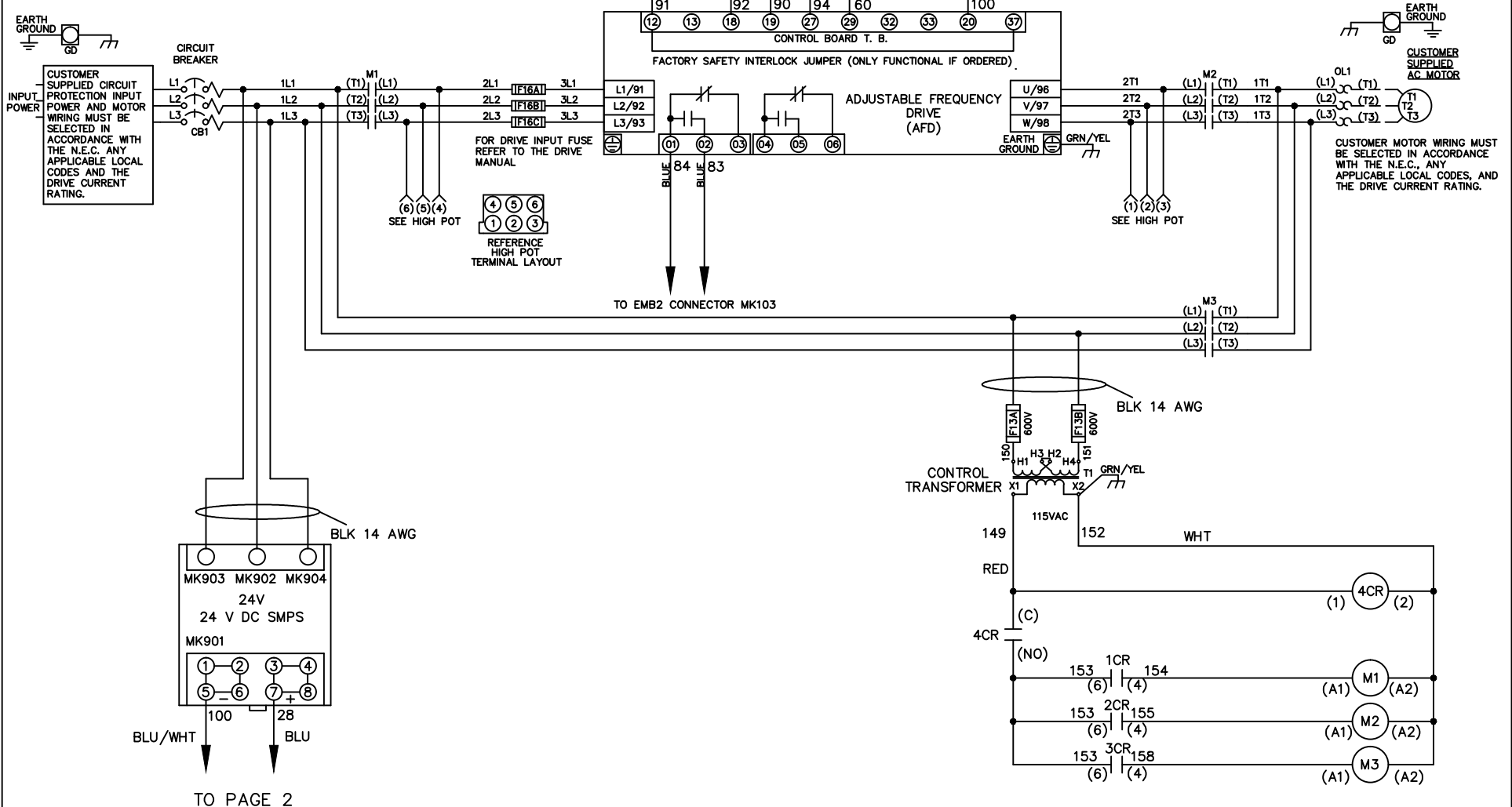


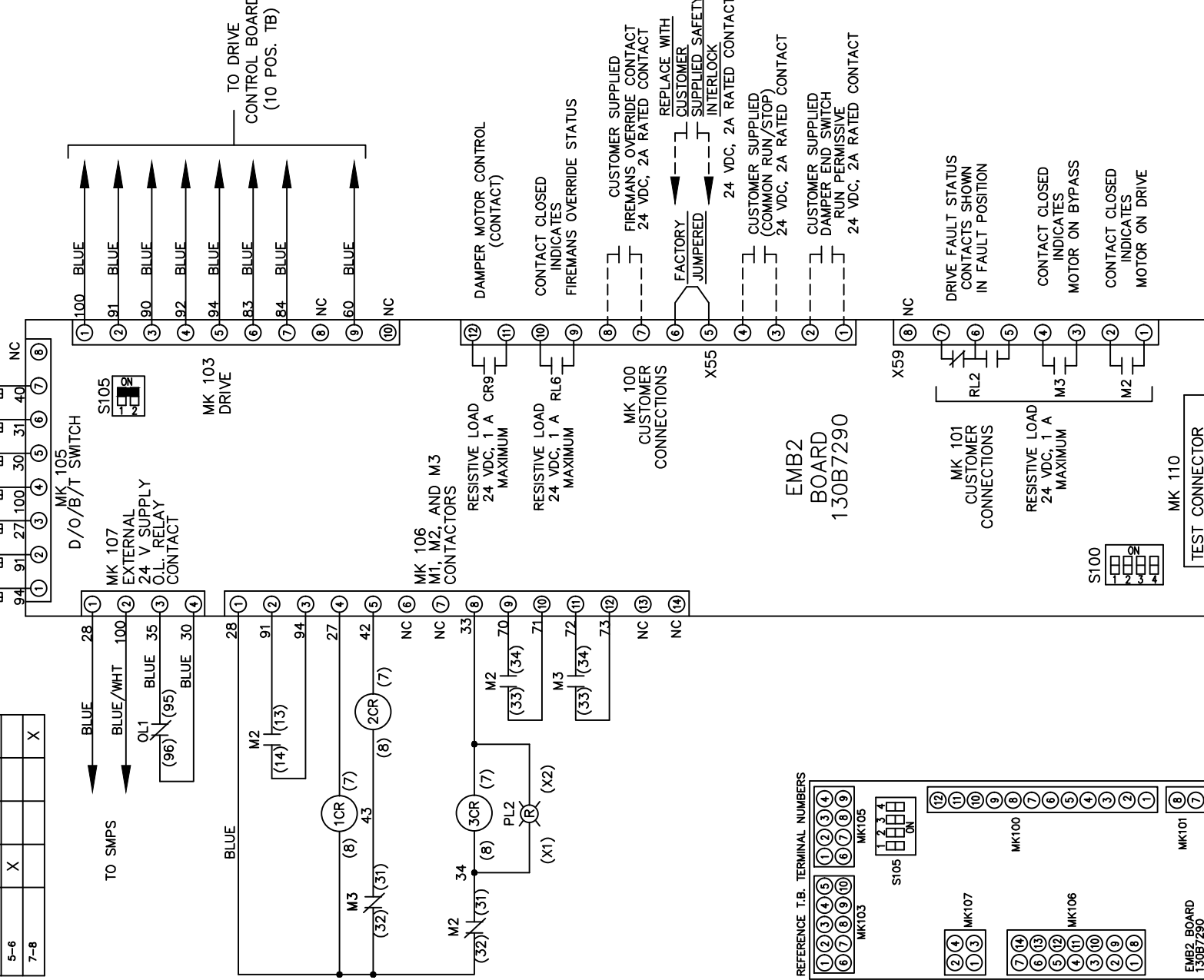
**WIRE COLOR SCHEME**  
 BLACK - LINE VOLTAGE  
 RED - AC CONTROL  
 WHITE - AC GROUNDED  
 CIRCUIT CONDUCTOR  
 BLUE - DC CONTROL  
 WHT/BLU - DC CONTROL COMMON  
 GREEN - CHASSIS GROUND



			-NOTICE-	DRN JNW	NAMEDWG,P5, EMB2,CB, 460V		THE TRANE COMPANY	
			THIS DRAWING IS PROPRIETARY AND SHALL NOT BE COPIED OR ITS CONTENTS DISCLOSED TO OUTSIDE PARTIES WITHOUT THE WRITTEN CONSENT OF THE TRANE COMPANY	3/2/11			A DIVISION OF AMERICAN STANDARD INC.	
002	LP11061	9/23/11		APR	MODEL	PAGE 1 OF 2	SIZE A	DWG NO. 177R0318
REV	ECN	DATE						

CONTACT SEQUENCE CHART FOR S1 X INDICATES CONTACT CLOSED			
POSITION	DRIVE	OFF	TEST
CONTACT			
1-2	X		X
3-4		X	X
5-6	X		
7-8			X

CUSTOMER CONNECTIONS X55,X59  
CLASS 2 POWER SOURCE  
REQUIRED FOR FIELD CONNECTION  
USE CLASS 1 CONDUCTORS  
CONDUCTOR SIZE 28-14 AWG



TO DRIVE CONTROL BOARD (10 POS. TB)

DAMPERS MOTOR CONTROL (CONTACT)

CONTACT CLOSED INDICATES FIREMANS OVERRIDE STATUS

CUSTOMER SUPPLIED FIREMANS OVERRIDE CONTACT 24 VDC, 2A RATED CONTACT

REPLACE WITH CUSTOMER SUPPLIED INTERLOCK

24 VDC, 2A RATED CONTACT

CUSTOMER SUPPLIED (COMMON RUN/STOP) 24 VDC, 2A RATED CONTACT

CUSTOMER SUPPLIED DAMPER END SWITCH RUN PERMISSIVE 24 VDC, 2A RATED CONTACT

DRIVE FAULT STATUS CONTACTS SHOWN IN FAULT POSITION

CONTACT CLOSED INDICATES MOTOR ON BYPASS

CONTACT CLOSED INDICATES MOTOR ON DRIVE

CUSTOMER SETTING AUTOMATIC BYPASS TIME SELECT

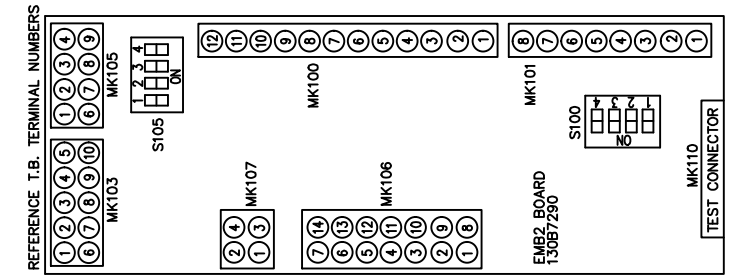
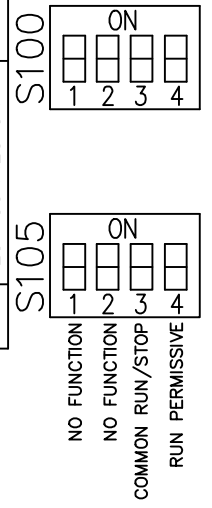
ONLY # 1 ON 30 SECONDS

ONLY # 2 ON 60 SEC.

ONLY # 3 ON 300 SEC

ALL ON 15 SEC.

ALL OFF NO AUTO BYPASS (FACTORY DEFAULT)



-NOTICE-

THIS DRAWING IS PROPRIETARY AND SHALL NOT BE COPIED OR ITS CONTENTS DISCLOSED TO OUTSIDE PARTIES WITHOUT THE WRITTEN CONSENT OF THE TRANE COMPANY

DRN JNW  
3/2/11  
APR

NAMEDWG,P5,  
EMB2,CB,  
460V

THE TRANE COMPANY  
A DIVISION OF  
AMERICAN STANDARD INC.

002	LP11061	9/23/11
REV	ECN	DATE

MODEL PAGE 2 OF 2 SIZE A DWG NO. 177R0318