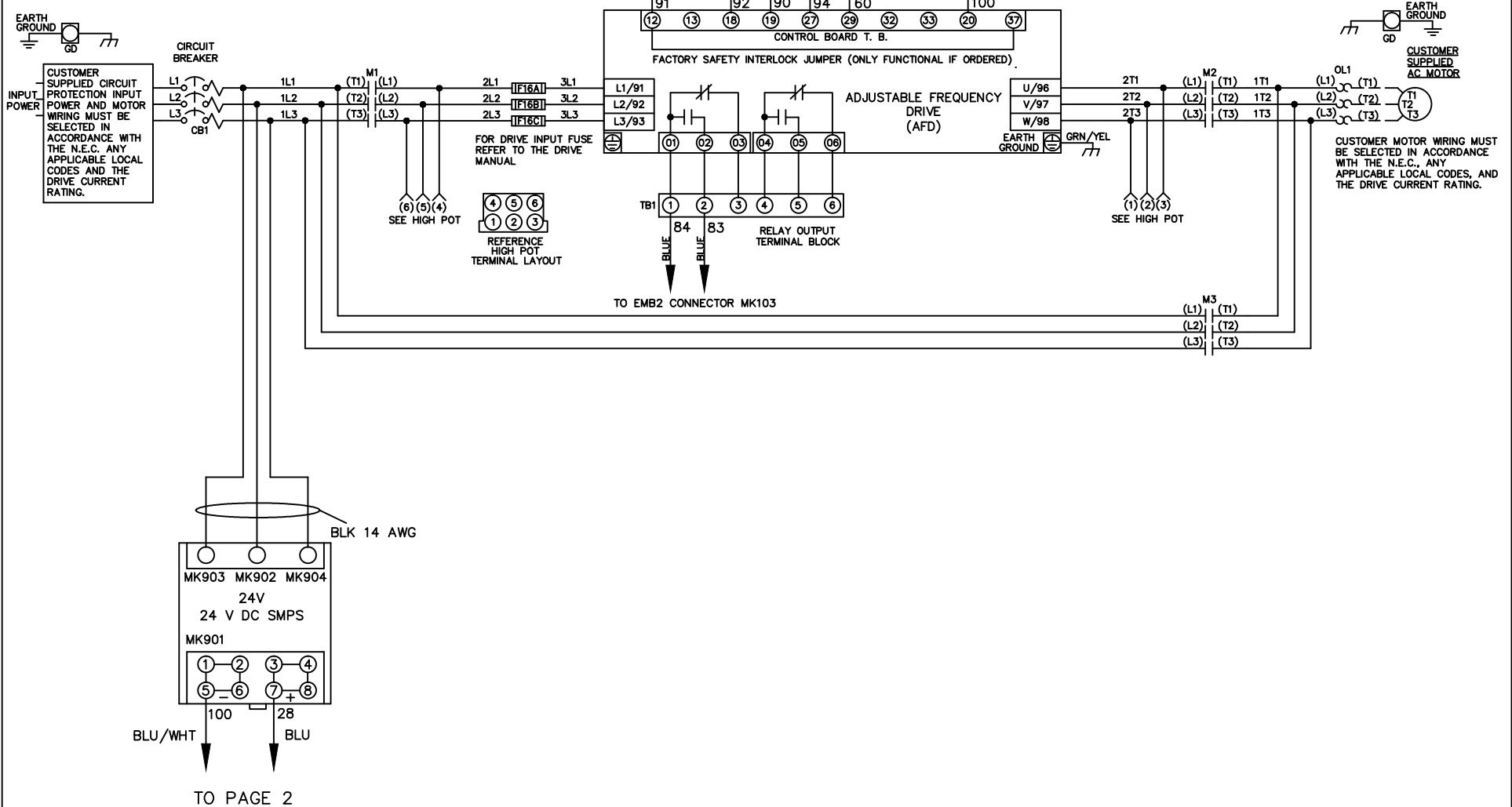


WIRE COLOR SCHEME
 BLACK - LINE VOLTAGE
 RED - AC CONTROL
 WHITE - AC GROUNDED
 CIRCUIT CONDUCTOR
 BLUE - DC CONTROL
 WHT/BLU - DC CONTROL COMMON
 GREEN - CHASSIS GROUND

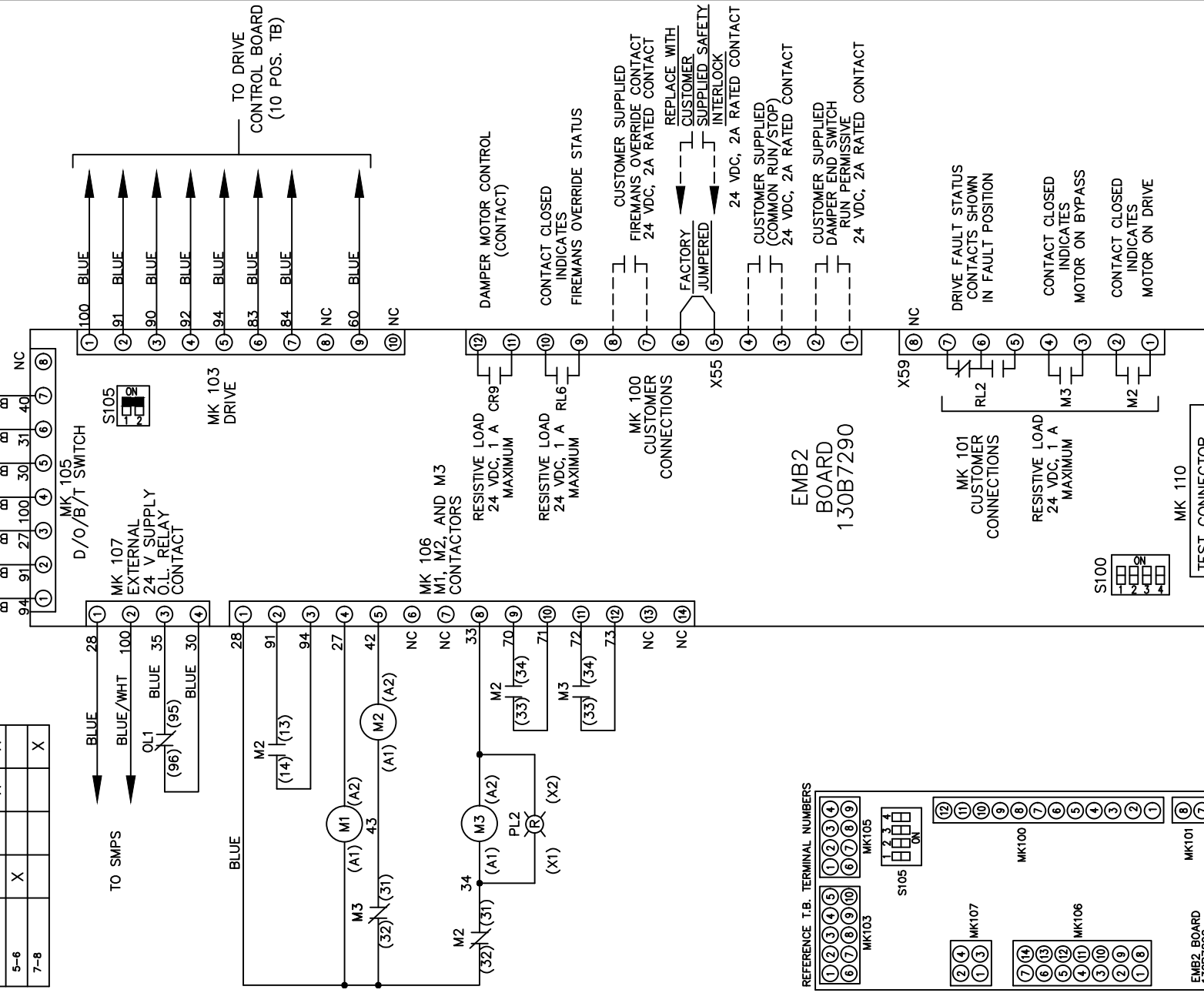


| | | | | | | | | |
|-----|---------|---------|---------------------------------------------------------------------------------------------------------------------------------------------------|---------|-------------------------|-------------|-----------------------------------------|------------------|
| | | | -NOTICE- | DRN JNW | NAMEDWG,P2, EMB2,CB, | | THE TRANE COMPANY | |
| | | | THIS DRAWING IS PROPRIETARY AND SHALL NOT BE COPIED OR ITS CONTENTS DISCLOSED TO OUTSIDE PARTIES WITHOUT THE WRITTEN CONSENT OF THE TRANE COMPANY | 3/2/11 | ---- | | A DIVISION OF AMERICAN STANDARD INC. | |
| 002 | LP11061 | 9/26/11 | | APR | MODEL | PAGE 1 OF 2 | SIZE A | DWG NO. 177R0331 |
| REV | ECN | DATE | | | | | | |

CONTACT SEQUENCE CHART FOR S1
X INDICATES CONTACT CLOSED

| POSITION | DRIVE | OFF | BYPASS | TEST |
|----------|-------|-----|--------|------|
| CONTACT | X | | | X |
| 1-2 | | | X | |
| 3-4 | X | | | X |
| 5-6 | X | | | |
| 7-8 | | | | X |

CUSTOMER CONNECTIONS X55,X59
CLASS 2 POWER SOURCE
REQUIRED FOR FIELD CONNECTION
USE CLASS 1 CONDUCTORS
CONDUCTOR SIZE 28-14 AWG



S105

| | |
|---|-----------------|
| 1 | NO FUNCTION |
| 2 | NO FUNCTION |
| 3 | COMMON RUN/STOP |
| 4 | RUN PERMISSIVE |

S100

| | |
|---|----|
| 1 | ON |
| 2 | ON |
| 3 | ON |
| 4 | ON |

CUSTOMER SETTING
AUTOMATIC BYPASS TIME SELECT
ONLY # 1 ON 30 SECONDS
ONLY # 2 ON 60 SEC.
ONLY # 3 ON 300 SEC
ALL ON 15 SEC.

| | | |
|-----|---------|---------|
| 002 | LP11061 | 9/26/11 |
| REV | ECN | DATE |

-NOTICE-
THIS DRAWING IS PROPRIETARY AND SHALL NOT
BE COPIED OR ITS CONTENTS DISCLOSED TO
OUTSIDE PARTIES WITHOUT THE WRITTEN
CONSENT OF THE TRANE COMPANY

DRN JNW
3/2/11
APR

NAMEDWG,P2,
EMB2,CB,

MODEL

PAGE 2 OF 2

SIZE A

DWG NO. 177R0331

THE TRANE COMPANY
A DIVISION OF
AMERICAN STANDARD INC.