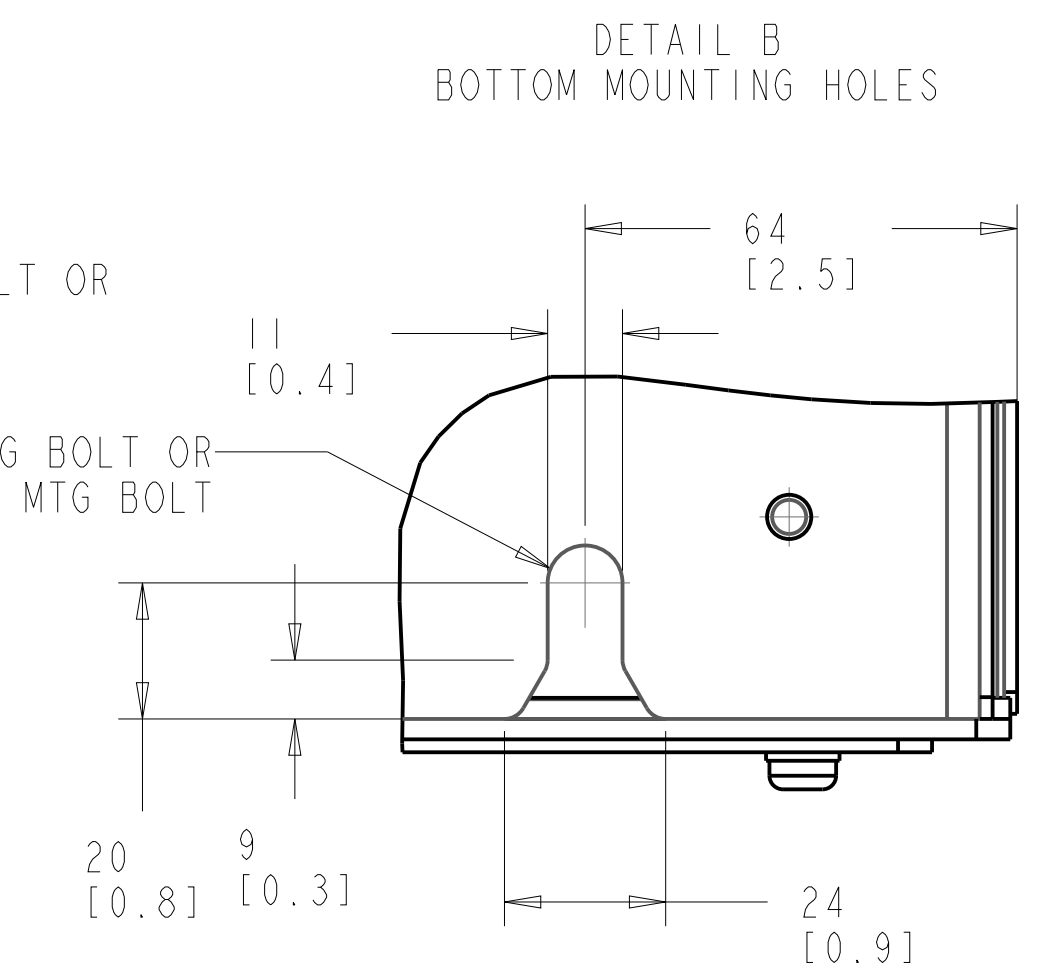
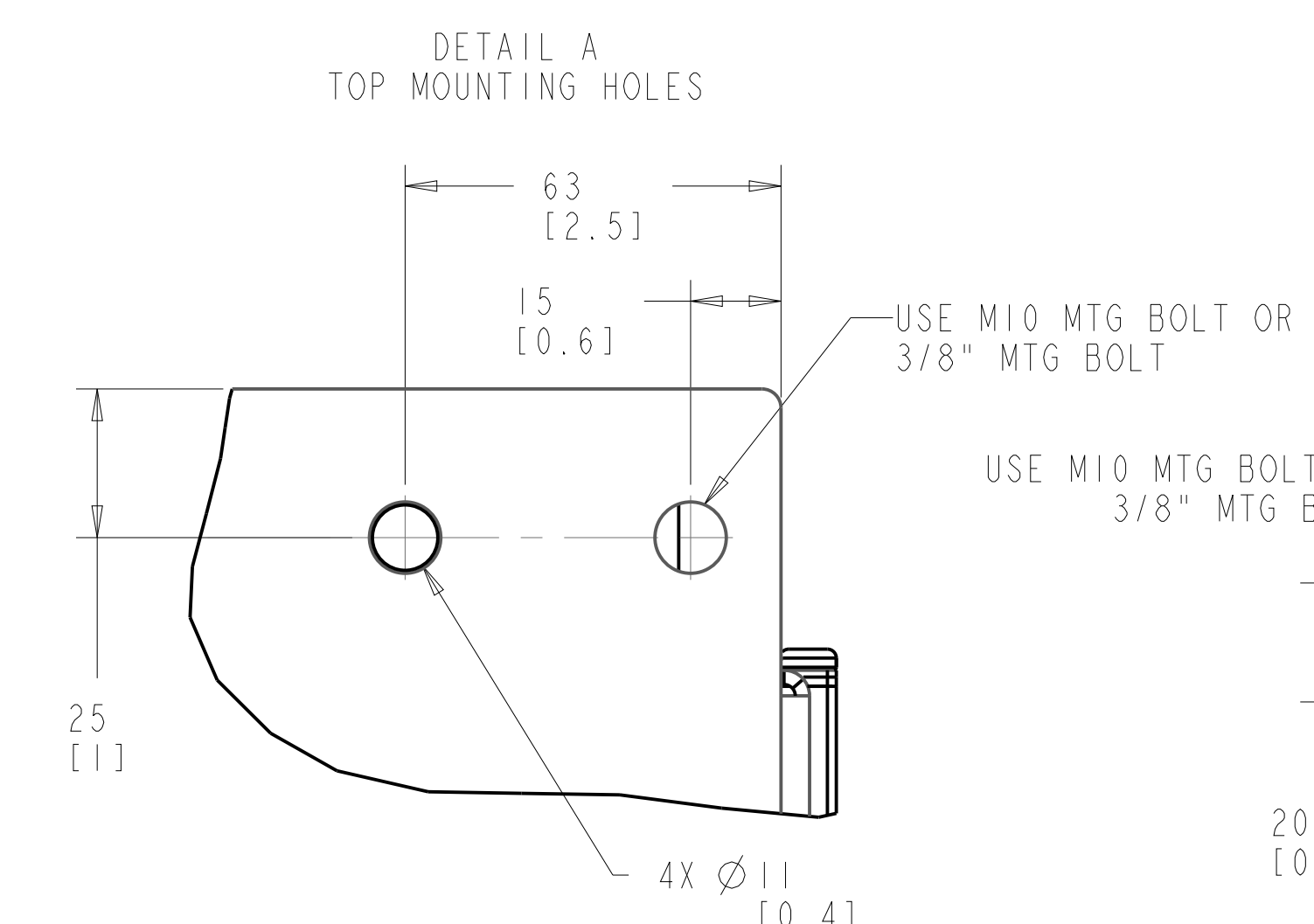
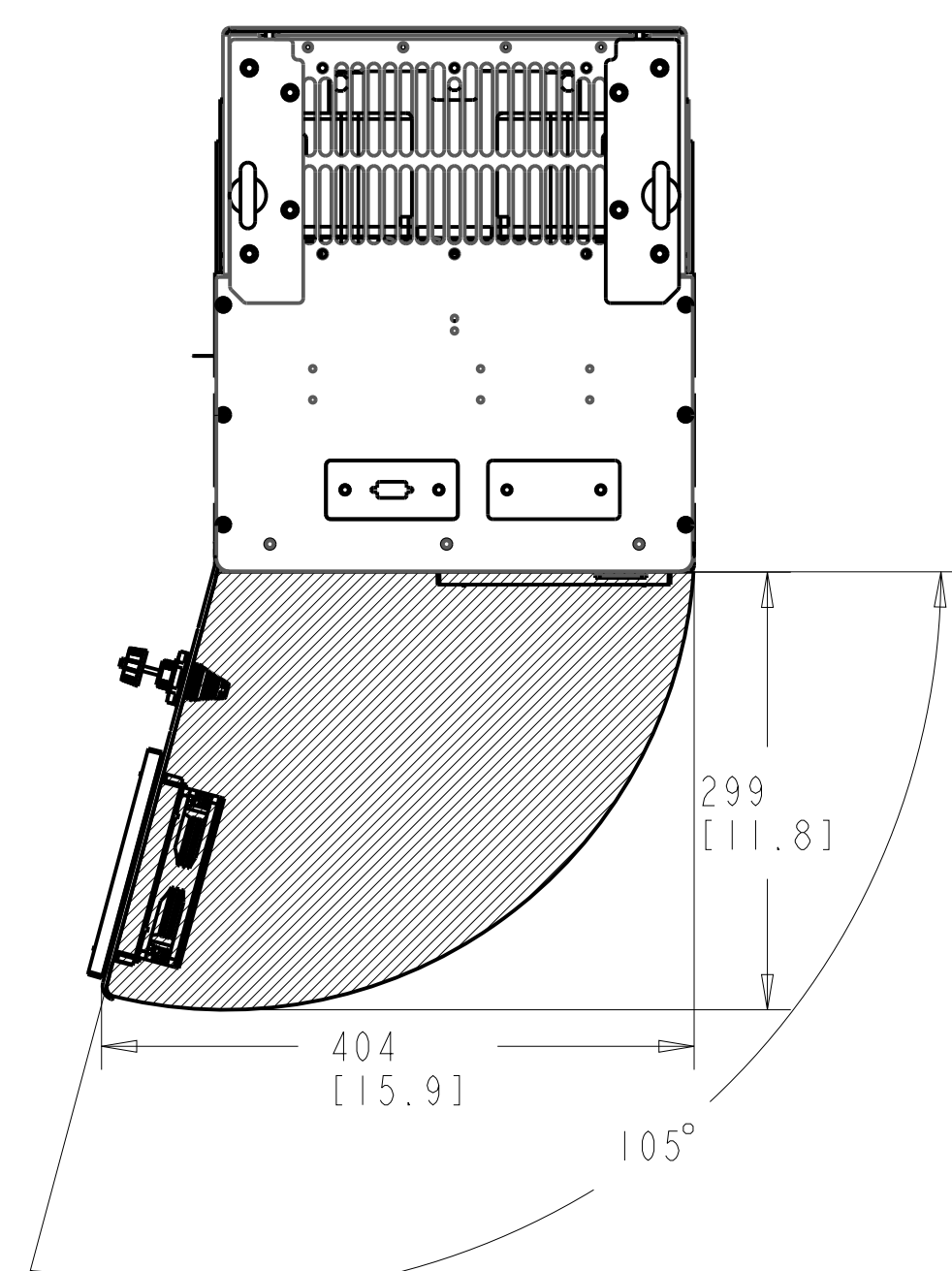
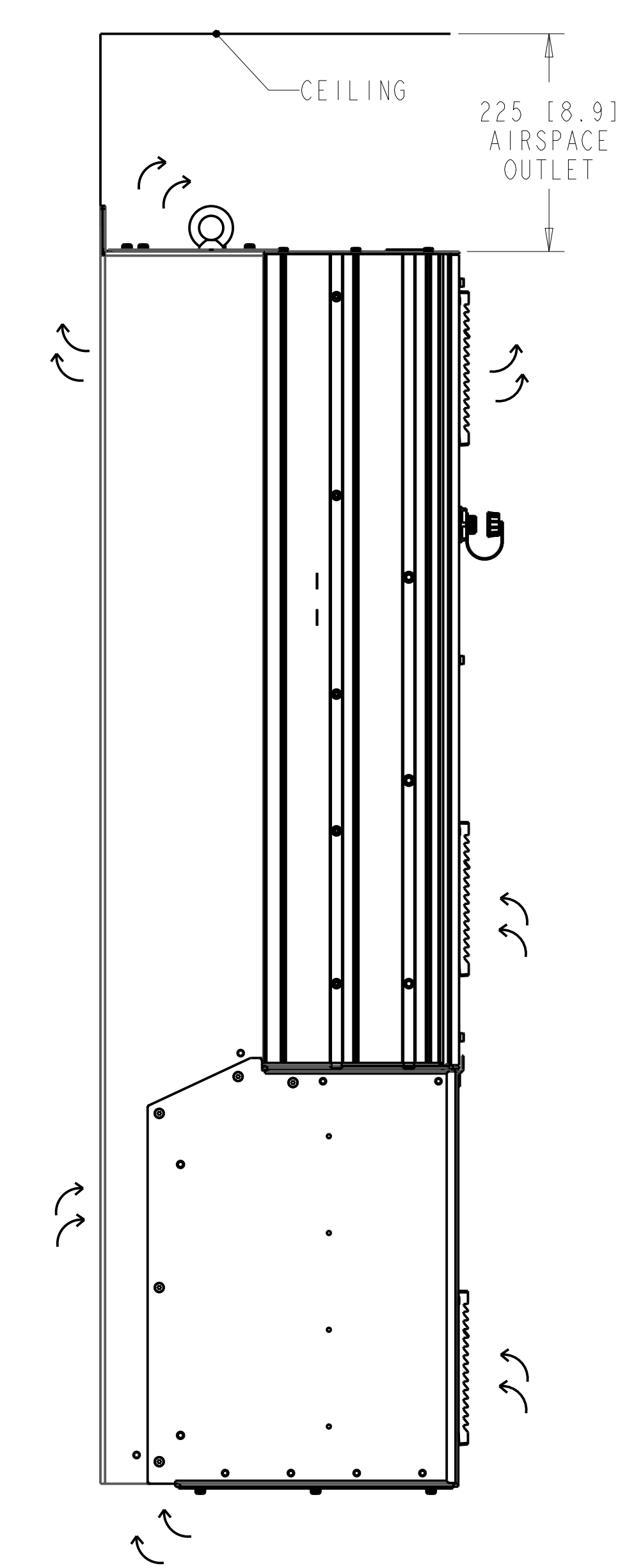
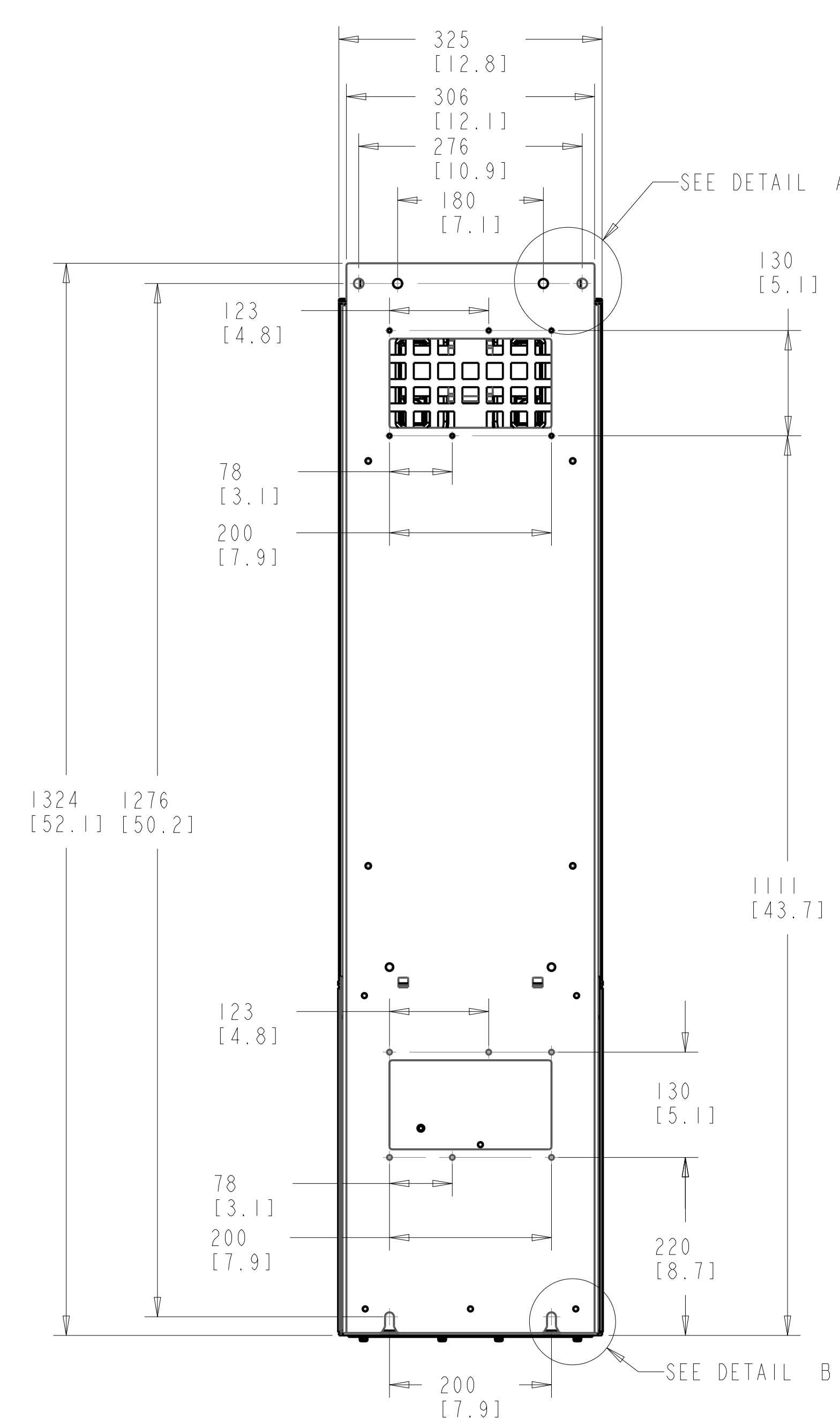
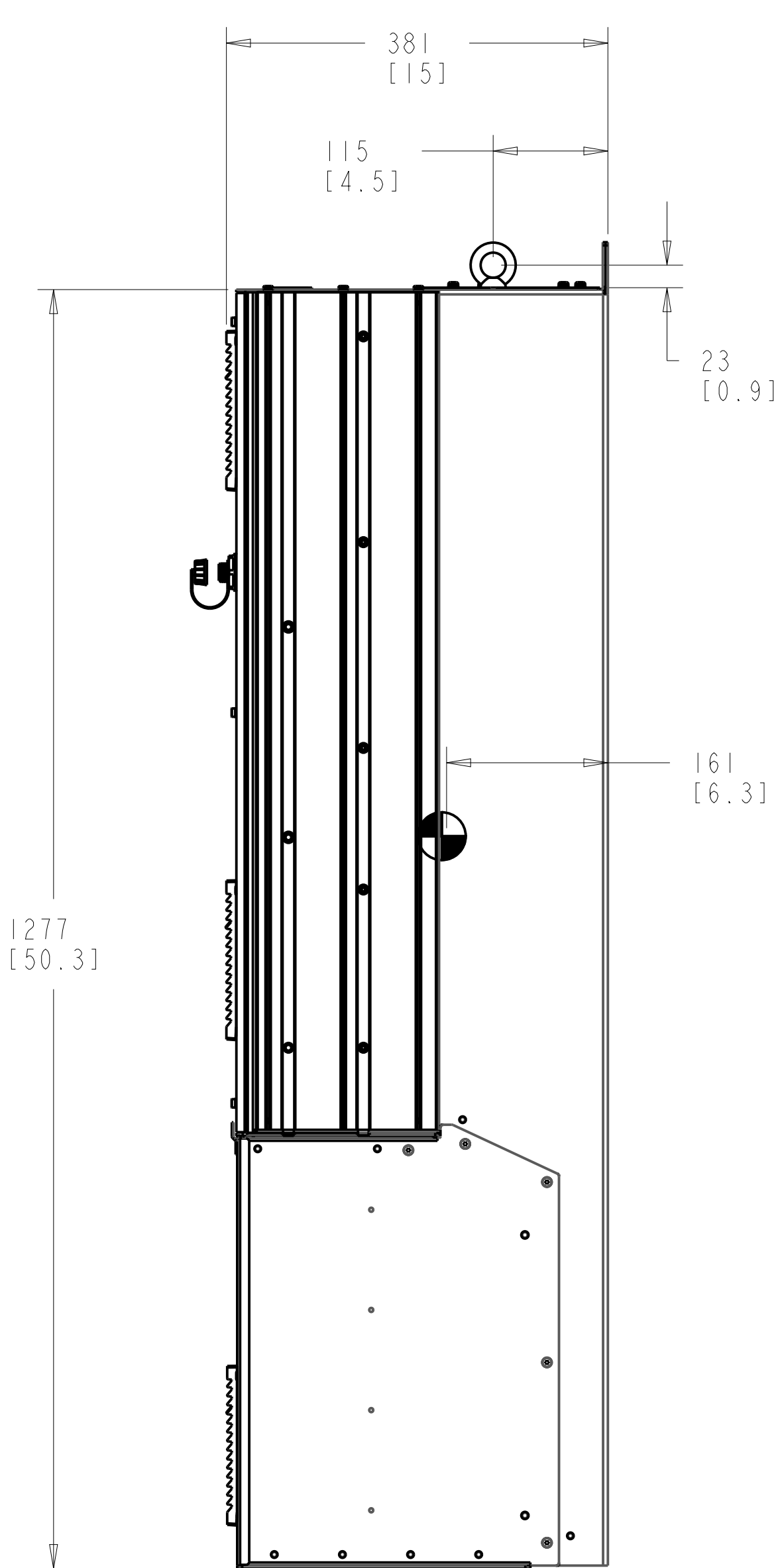
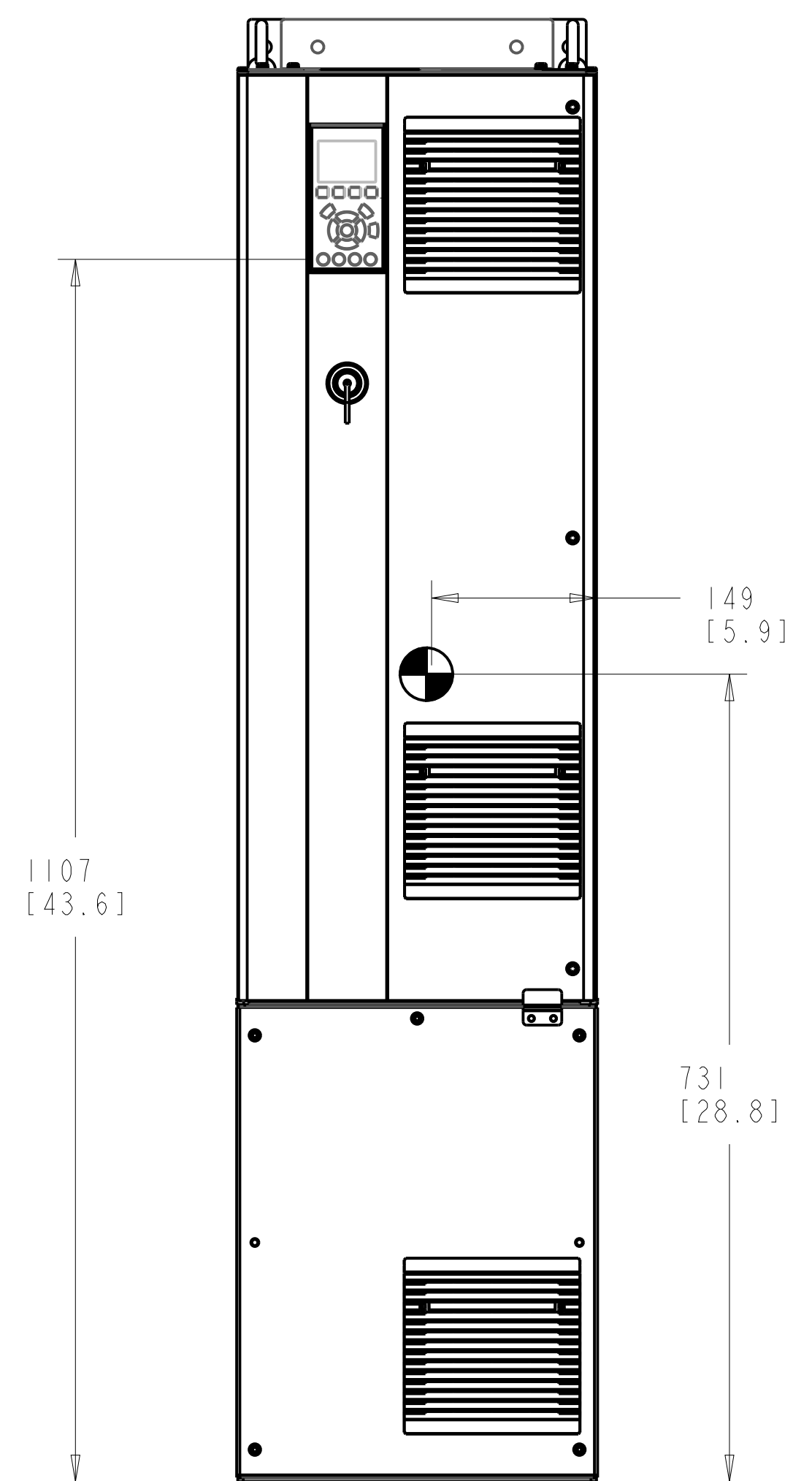
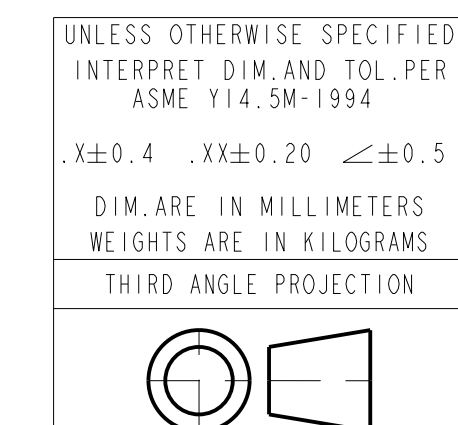


- NOTICE -
 THIS DOCUMENT CONTAINS PROPRIETARY INFORMATION OF DANFOSS DRIVES. IT IS LOANED BY DANFOSS DRIVES SUBJECT TO THE CONDITIONS THAT IT AND THE INFORMATION EMBODIED THEREIN SHALL BE USED ONLY FOR RECORD AND REFERENCE PURPOSES. SHALL NOT BE USED OR CAUSED TO BE USED IN ANY WAY PREJUDICIAL TO THE INTERESTS OF DANFOSS DRIVES. SHALL NOT BE REPRODUCED OR COPIED IN WHOLE OR IN PART OR DISCLOSED TO ANYONE WITHOUT THE DIRECT WRITTEN PERMISSION OF DANFOSS DRIVES, AND SHALL BE RETURNED UPON REQUEST.

REVISION HISTORY			
REV	ECN NUMBER	ENTRY BY	DATE
001	INITIAL RELEASE	CCN	06/18/12



1. MAX AIRFLOW (BACKCHANNEL) - 7 M³ / MIN (250 CFM)
2. MAX AIRFLOW (CABINET) - 1.7 M³ / MIN (60 CFM)
3. MAX WEIGHT = 99 KG (219 LBS)
4. CENTER OF GRAVITY:
APPROXIMATE LOCATION ONLY, LOCATION MAY VARY BASED ON POWER RATING AND OPTIONS ORDERED.



UNLESS OTHERWISE SPECIFIED INTERPRET DIM. AND TOL. PER ASME Y14.5M-1994	PROPERTIES		
	MATERIAL	NA	
FINISH	NA		
THICKNESS	NA		
EST. WEIGHT	99.00		
THIRD ANGLE PROJECTION	APPROVALS	INITIALS	DATE
	DRAWN	ND	04/09/12
	CHECKED		
	ENGR		

Danfoss
 4401 N. BELL SCHOOL RD. LOVES PARK, ILLINOIS 61111 USA
 (815) 639-9000 FAX (815) 639-9000

INSTALLATION DRAWING, DSH, IP21/54

SIZE D	MODEL P454-1038	REV 001
SCALE 0.200	DRAWING NO. 177R0490	SHEET 1 OF 4

8

7

6

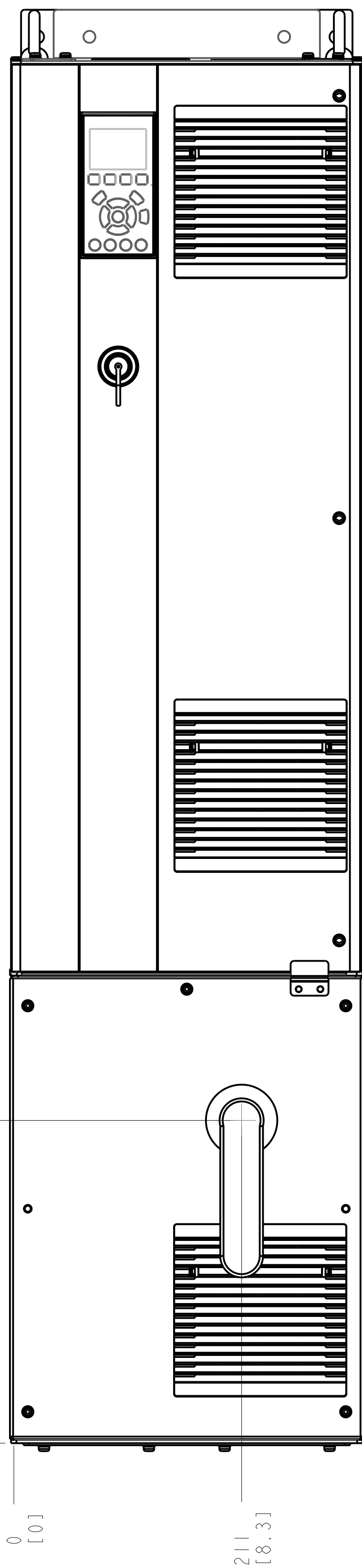
5

4

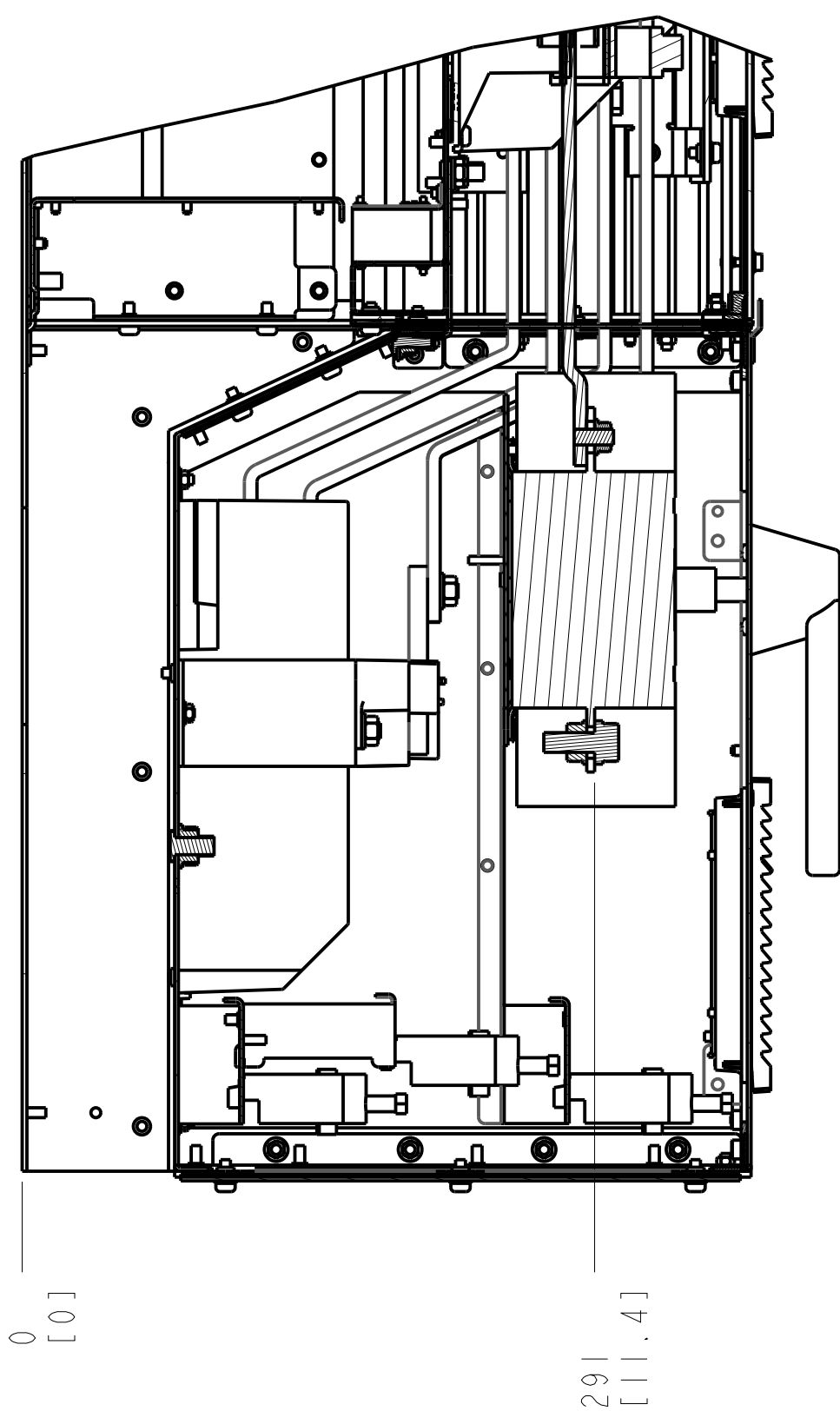
3

2

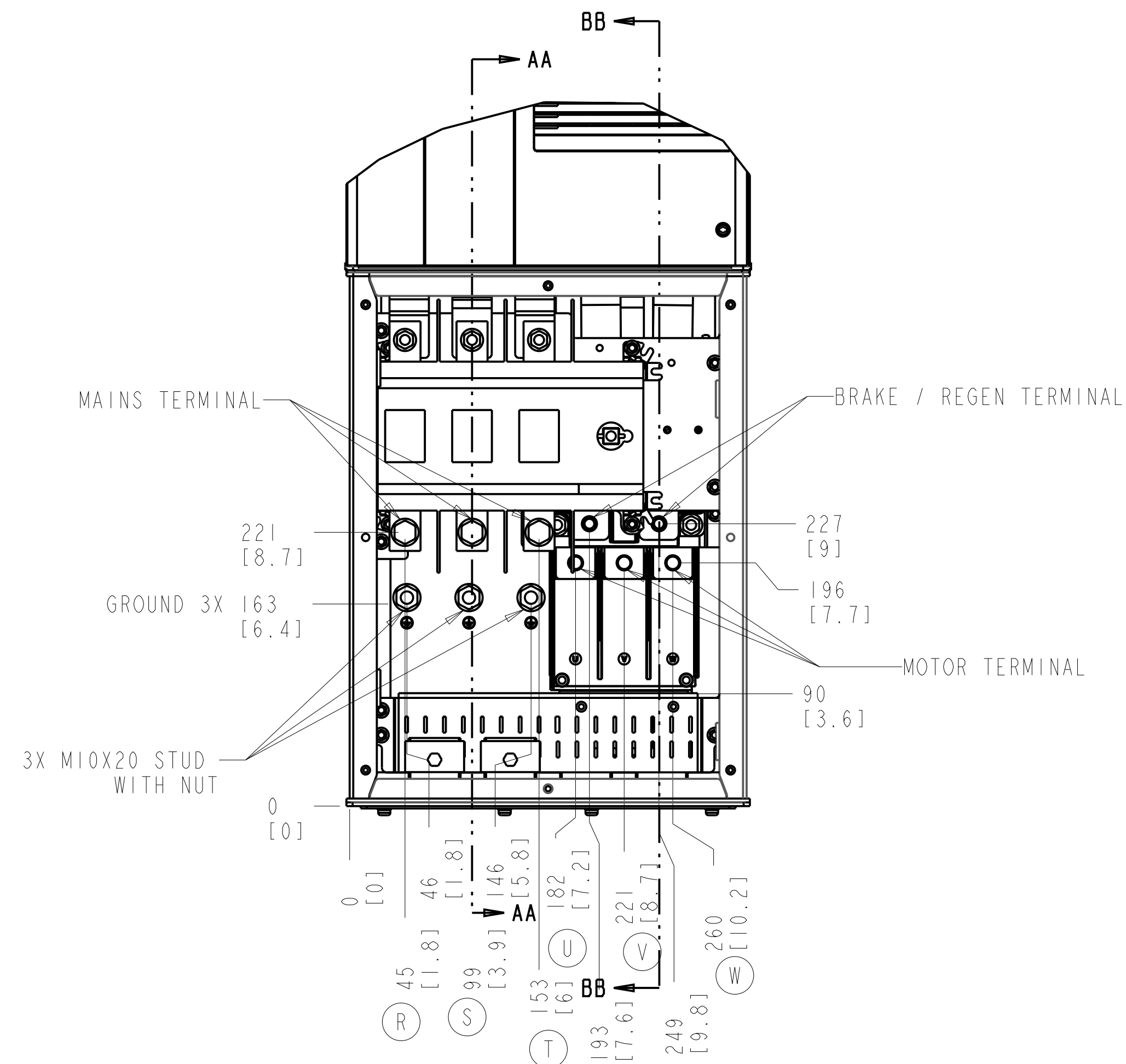
1



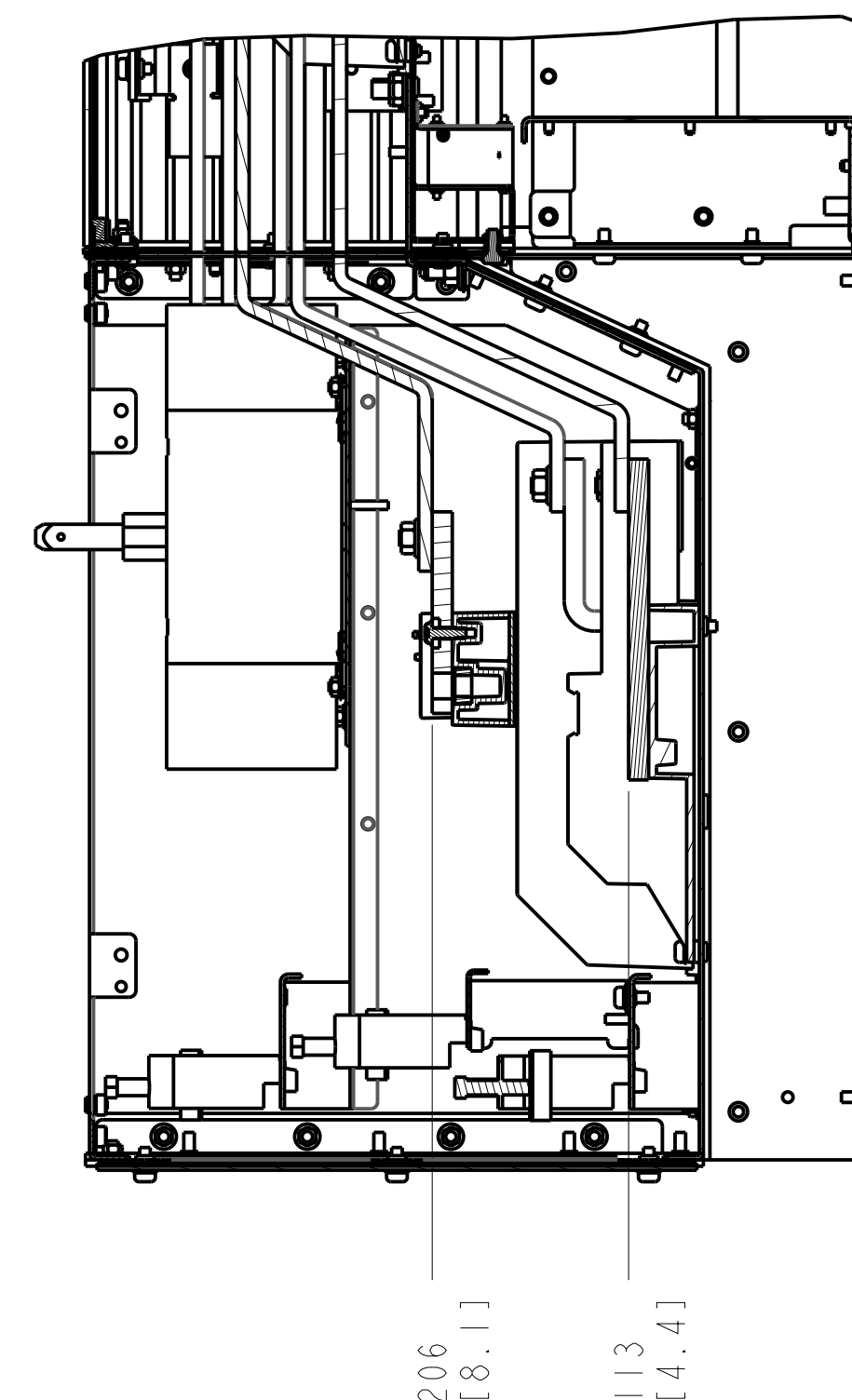
SECTION AA-AA
MAINS TERMINALS



DISCONNECT



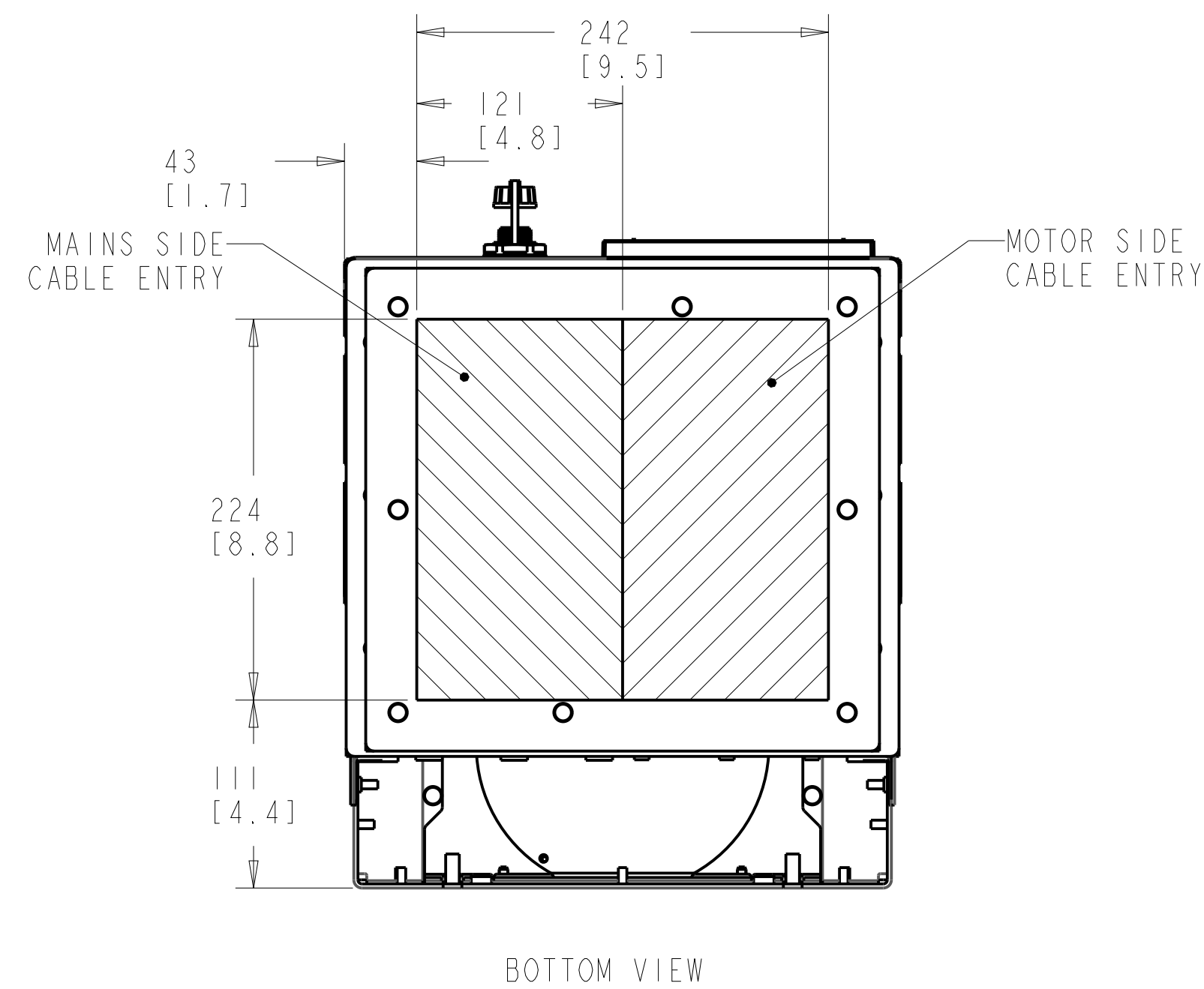
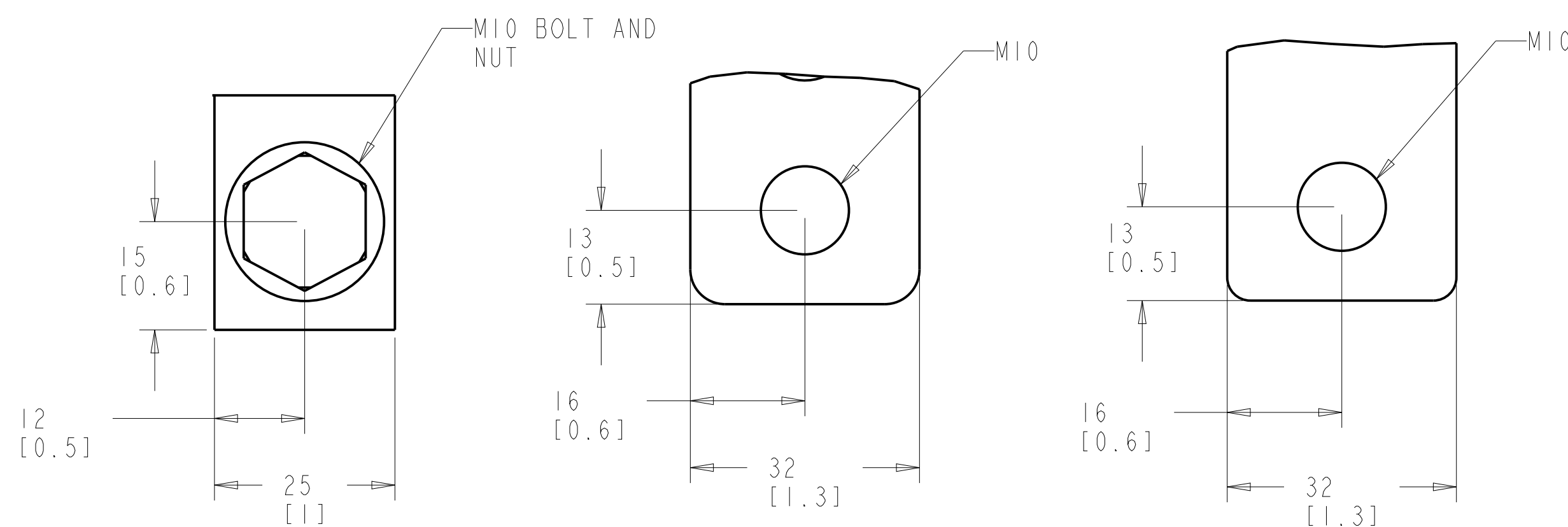
SECTION BB-BB
MOTOR TERMINALS
BRAKE / REGEN TERMINALS



MAINS TERMINAL

BRAKE / REGEN TERMINAL

MOTOR TERMINAL



NOTES:

1. PLACE CABLES THROUGH MARKED AREAS
2. 95MM² (310 MCM) MAX WIRE SIZE

TITLE INSTALLATION DRAWING, D5H, IP21/54			
SIZE D	MODEL P454-1038	REV P1	
SCALE 0.300	DRAWING NO. 177R0490	SHEET 2 OF 4	

8

7

6

5

4

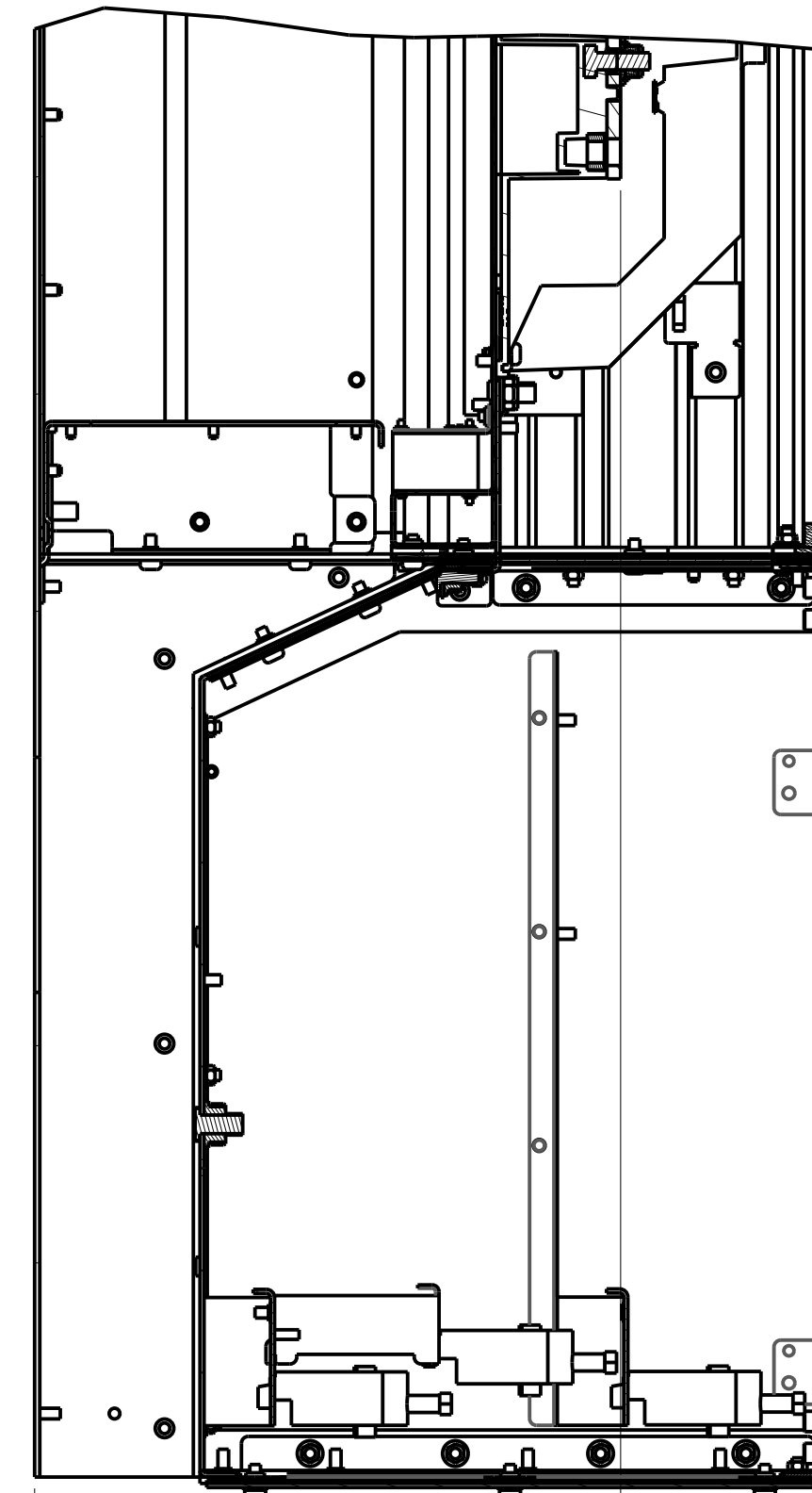
3

2

1

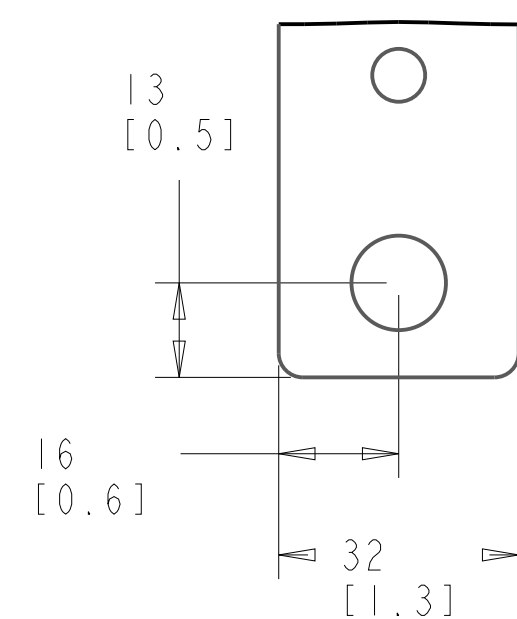
BRAKE ONLY

SECTION AA-AA
MAINS TERMINALS

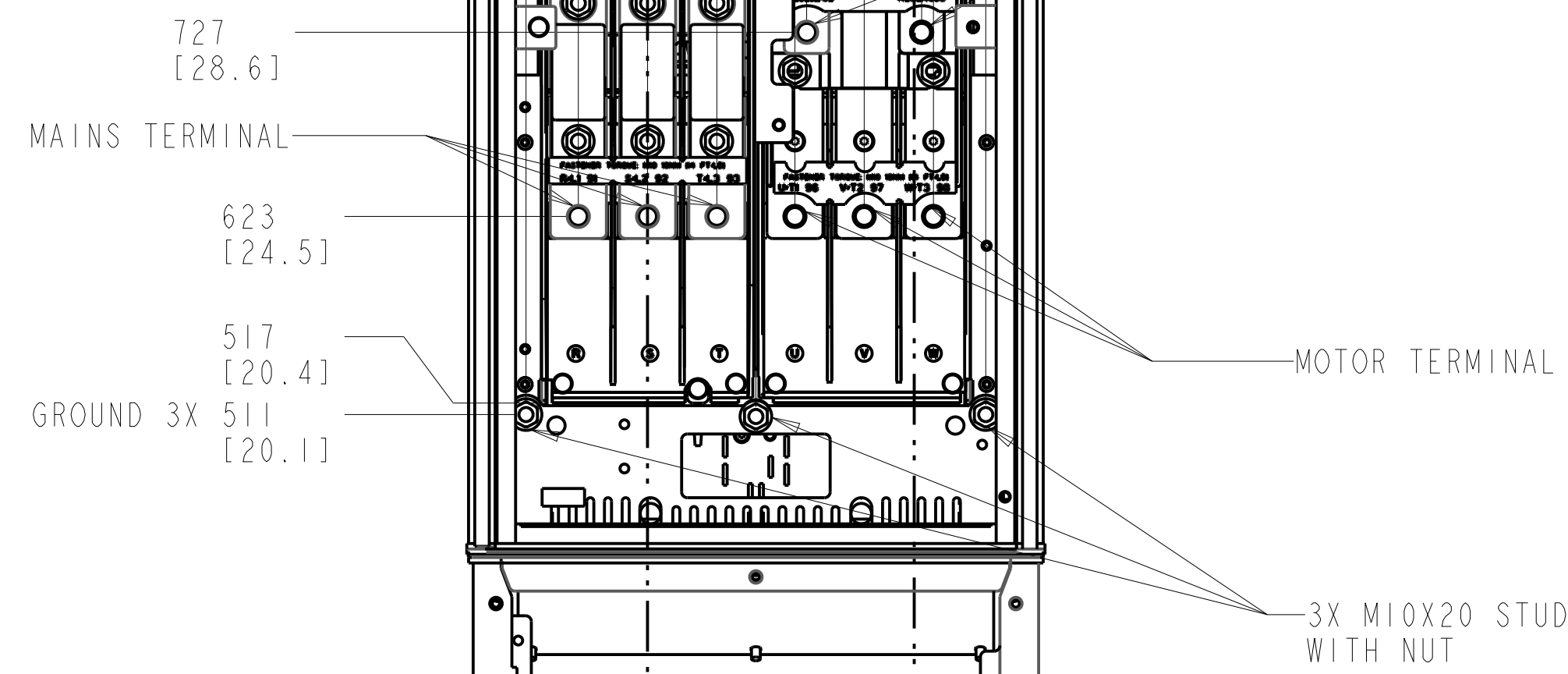


0 [0]
274 [10.8]

MAINS TERMINAL

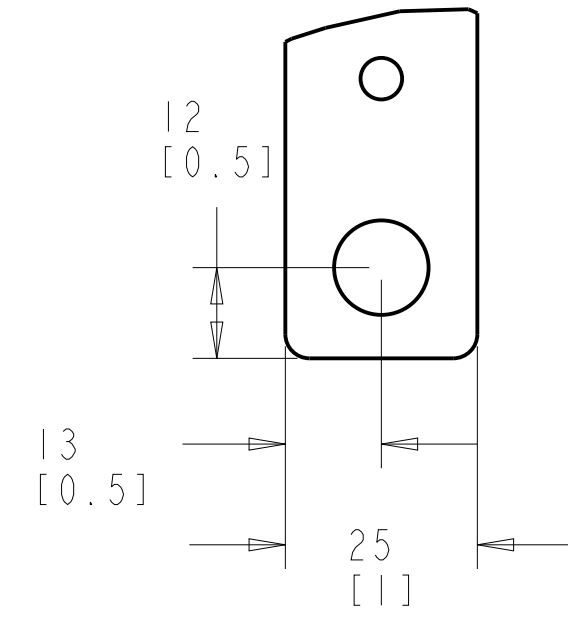


SECTION BB-BB
MOTOR TERMINALS
BRAKE / REGEN TERMINALS

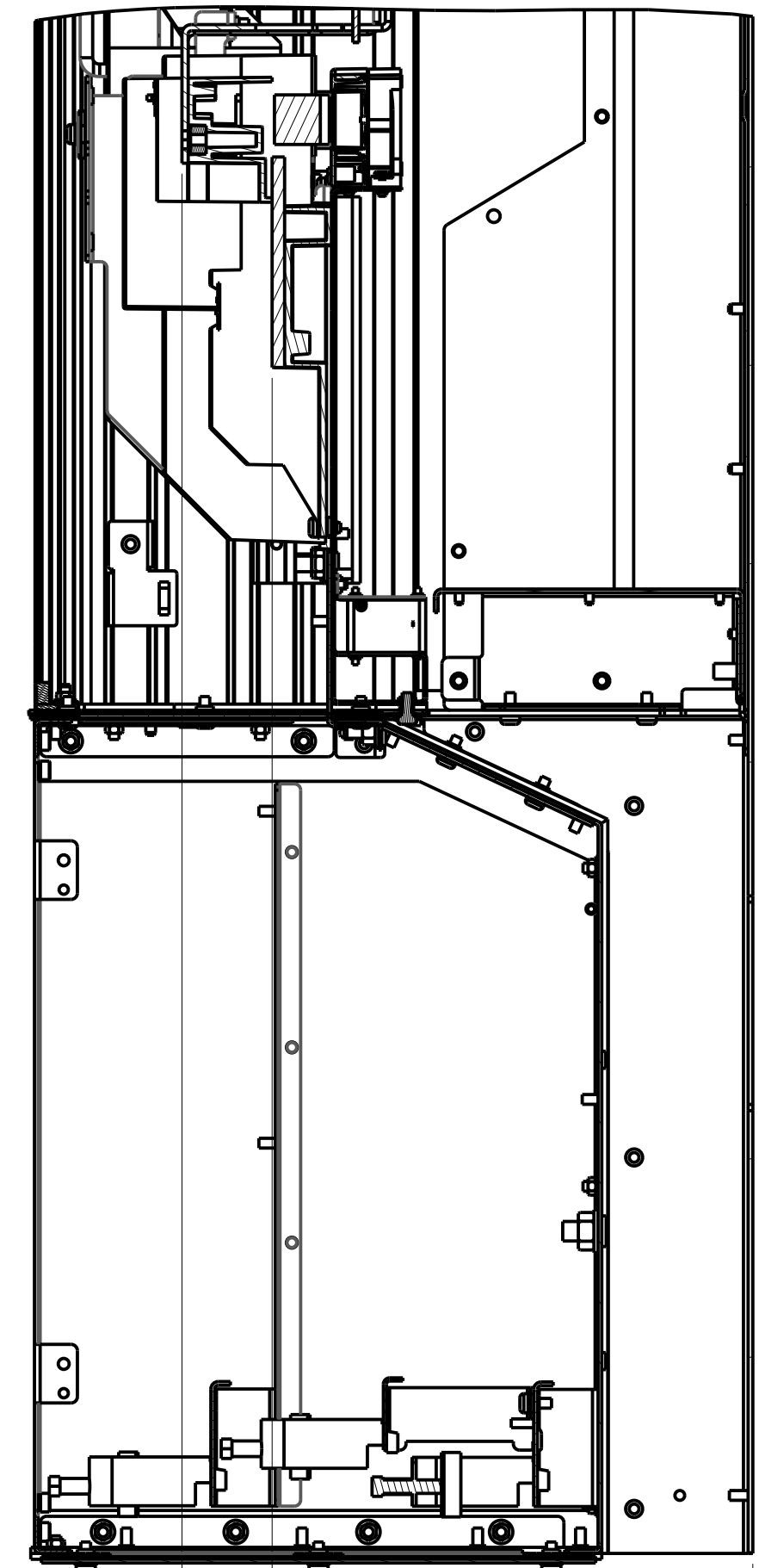
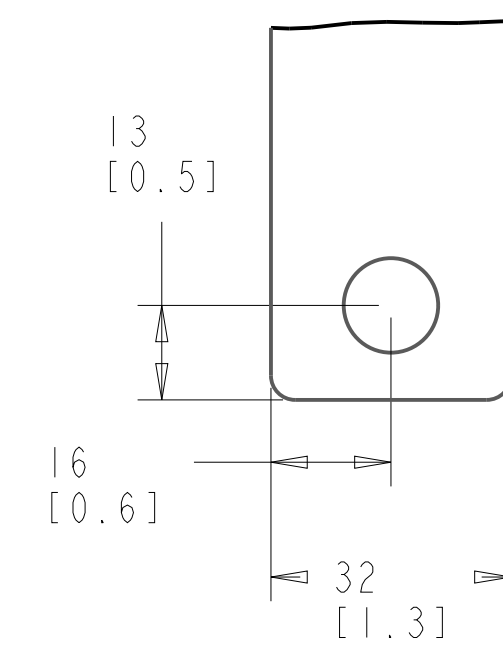


0 [0]
BB
AA

BRAKE / REGEN
TERMINAL



MOTOR TERMINAL



293 [11.5]
246 [9.7]
0 [0]

NOTES:
1. 95MM² (310 MCM) MAX WIRE SIZE

TITLE		
INSTALLATION DRAWING, D5H, IP21/54		
SIZE D	MODEL P454-1038	REV P1
SCALE 0.300	DRAWING NO. 177R0490	SHEET 3 OF 4

THE TABLES BELOW ARE USED TO DETERMINE THE FRAME SIZE FOR A GIVEN POWER AND VOLTAGE RATING, WITH A DISCONNECT OR BRAKE.

1) IDENTIFY THE POWER IN NORMAL OVERLOAD (N.O.) OR HIGH OVERLOAD (H.O.), KILOWATTS (KW) OR HORSEPOWER (HP).

2) READ DOWN THE COLUMN TO THE ROW WITH THE CORRECT VOLTAGE TO IDENTIFY THE FRAME SIZE.

THIS DRAWING IS FOR D5H FRAMES,

THE TABLE BELOW CAN BE USED TO DETERMINE THE FRAME SIZE IF THE SPECIFIC MODEL/TYPE CODE WITH A DISCONNECT OR BRAKE CHOPPER IS KNOWN.

KW RATED DRIVES					
KW HIGH OVERLOAD	75	90	110	132	160
KW NORMAL OVERLOAD	90	110	132	160	200
400V		D5H	D5H	D5H	
500V			D5H	D5H	D5H
525V	D5H	D5H	D5H	D5H	
690V		D5H	D5H	D5H	

HORSEPOWER RATED DRIVES				
HP HIGH OVERLOAD	100	125	150	200
HP NORMAL OVERLOAD	125	150	200	250
460V		D5H	D5H	D5H
575V	D5H	D5H	D5H	

PLATFORM	VOLTAGE	MODEL/TYPECODE	FRAME(IP21/IP54)
HVAC	T4	FC-102NI10T4	D5H
		FC-102NI32T4	
		FC-102NI60T4	
	T7	FC-102NI10T7	
		FC-102NI32T7	
		FC-102NI60T7	
AQUA	T4	FC-202NI10T4	
		FC-202NI32T4	
		FC-202NI60T4	
	T7	FC-202NI10T7	
		FC-202NI32T7	
		FC-202NI60T7	
AUTOMATION	T5	FC-302N90KT5	
		FC-302NI10T5	
		FC-302NI32T5	
	T7	FC-302N90KT7	
		FC-302NI10T7	
		FC-302NI32T7	