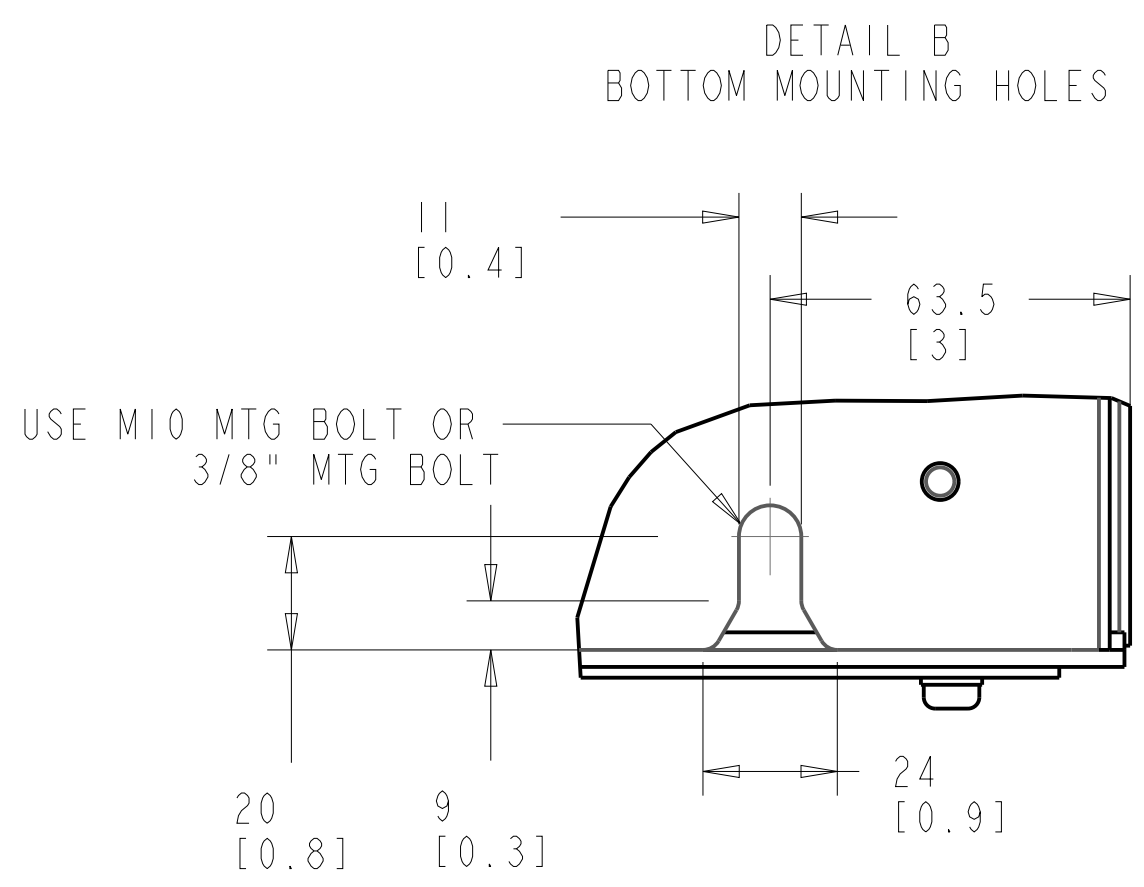
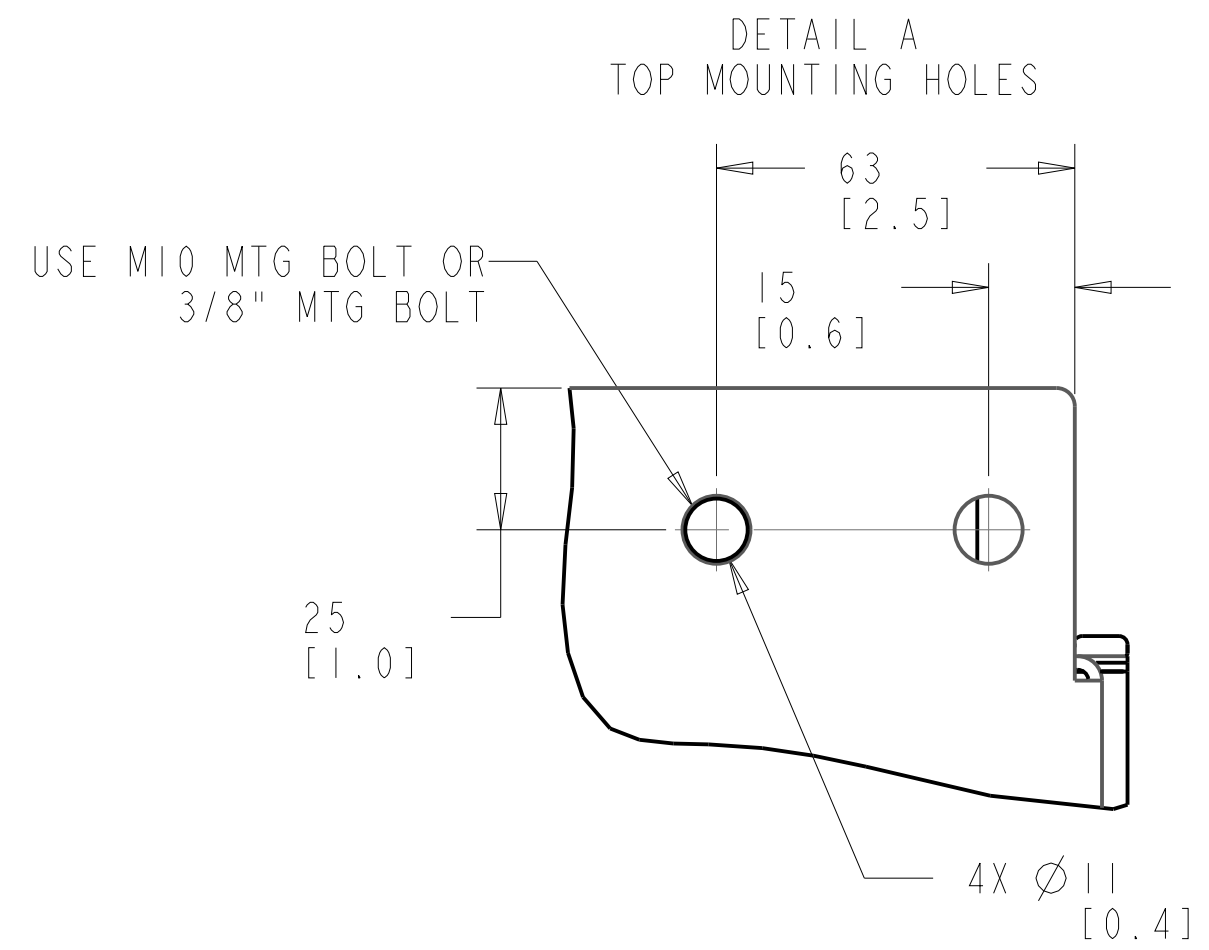
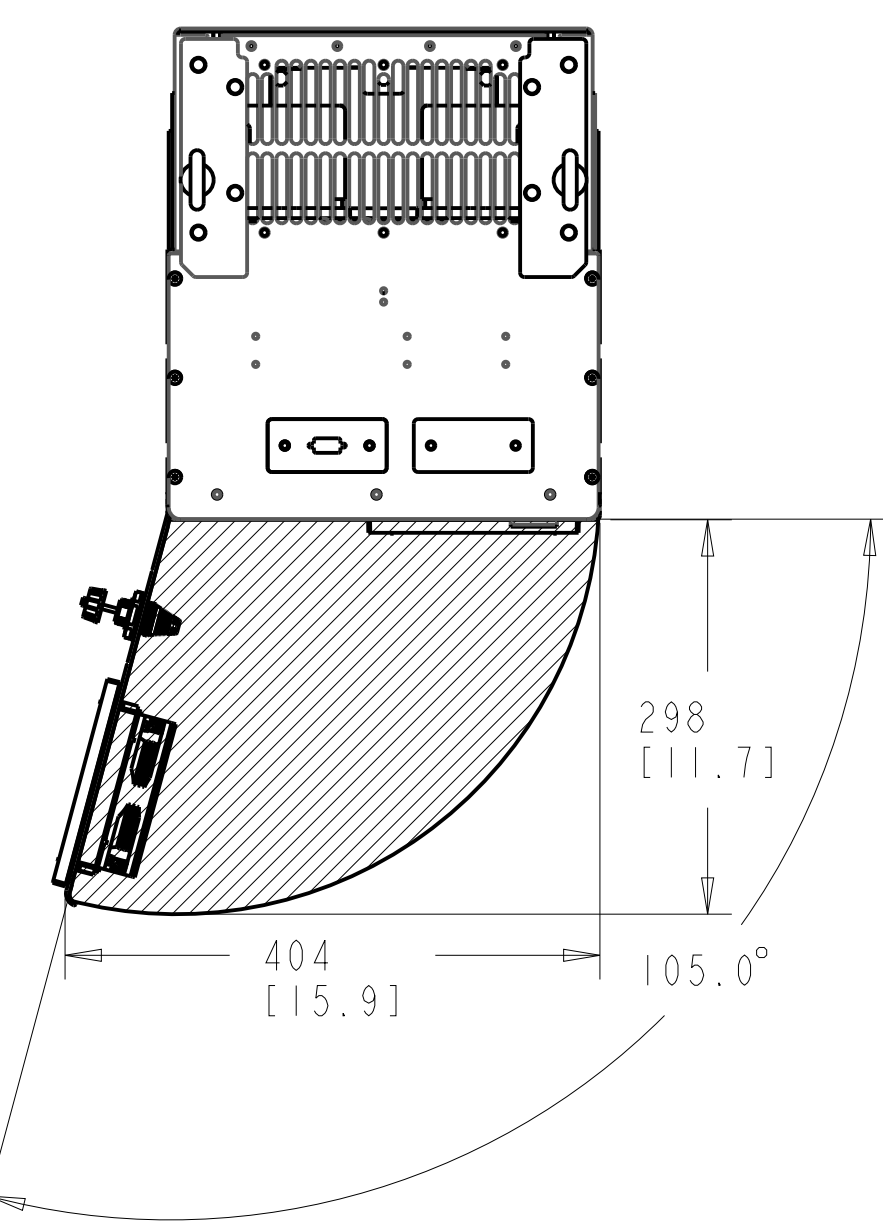
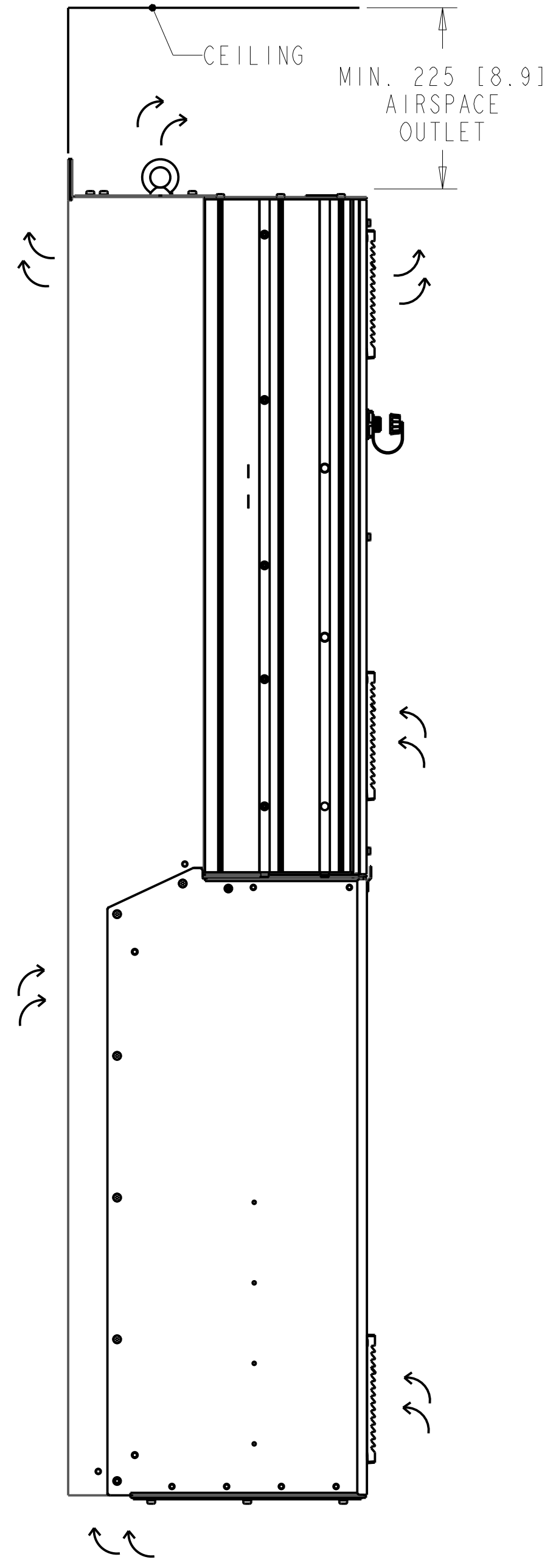
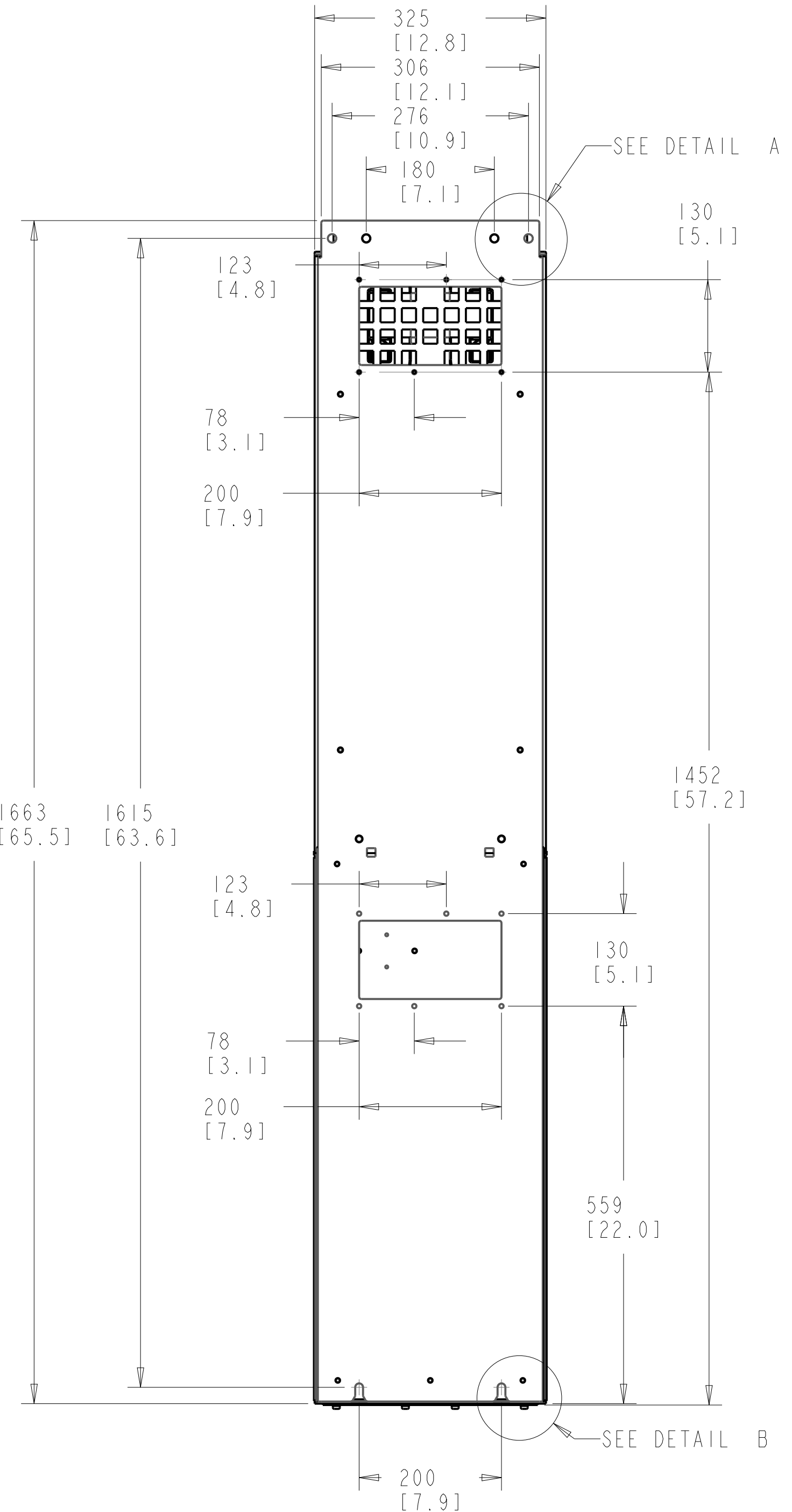
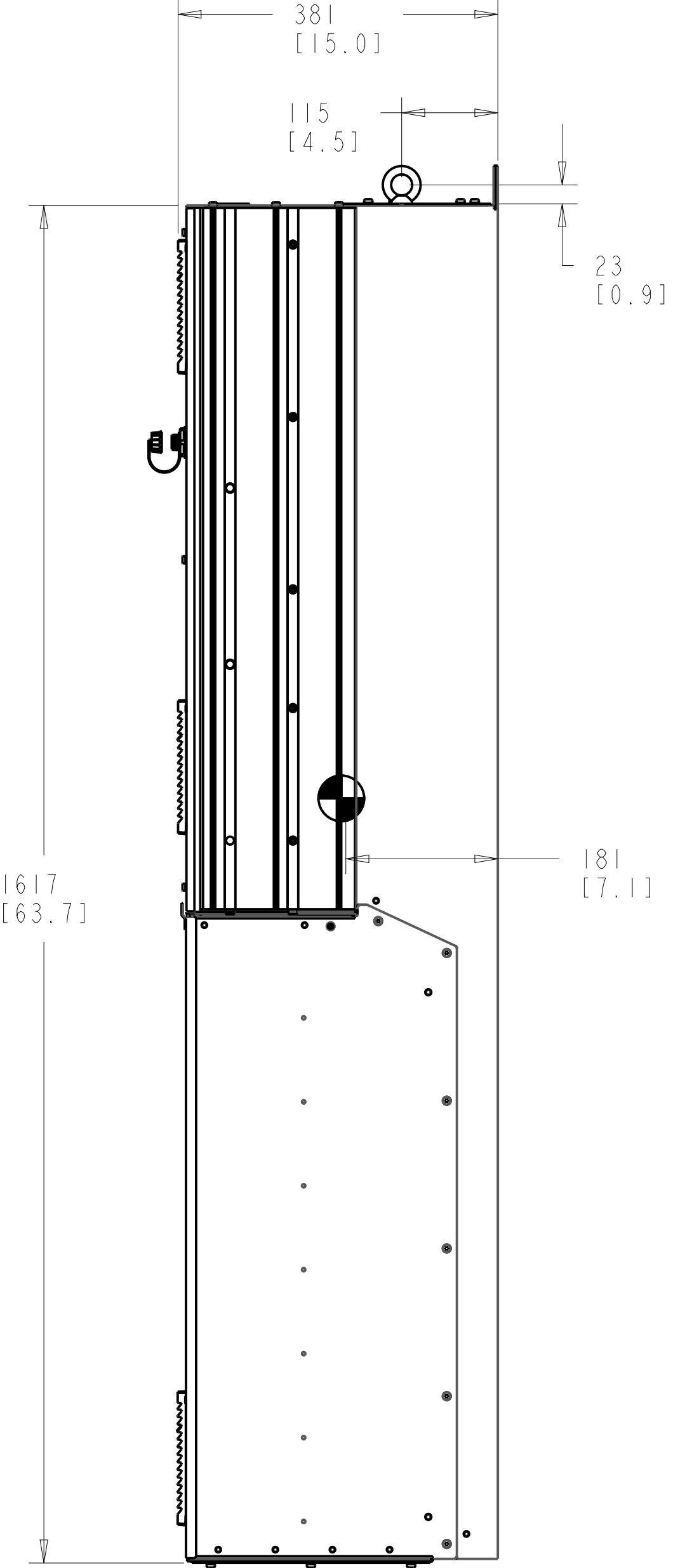
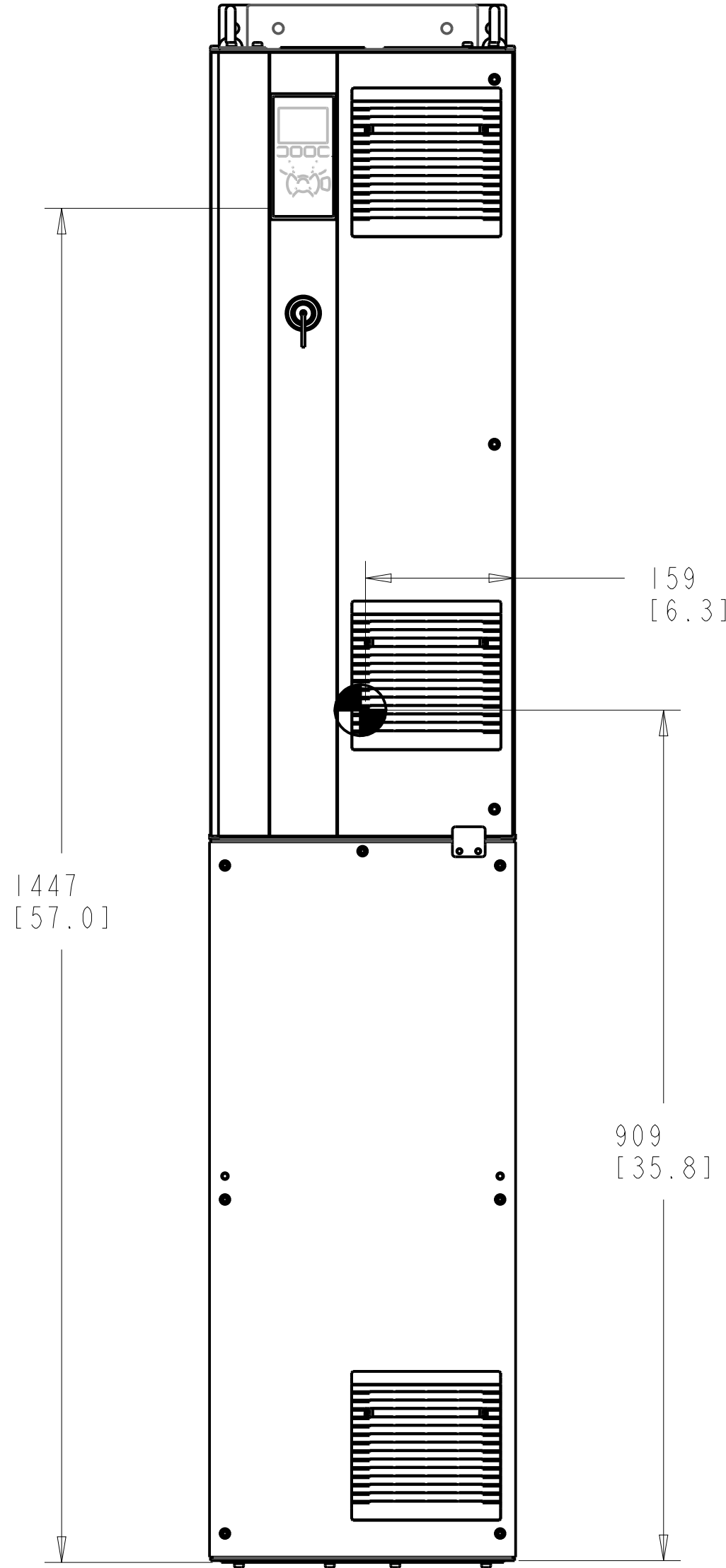


- NOTICE -
 THIS DOCUMENT CONTAINS PROPRIETARY INFORMATION OF DANFOSS DRIVES. IT IS LOANED BY DANFOSS DRIVES SUBJECT TO THE CONDITIONS THAT IT AND THE INFORMATION EMBODIED THEREIN SHALL BE USED ONLY FOR RECORD AND REFERENCE PURPOSES. SHALL NOT BE USED OR CAUSED TO BE USED IN ANY WAY PREJUDICIAL TO THE INTERESTS OF DANFOSS DRIVES. SHALL NOT BE REPRODUCED OR COPIED IN WHOLE OR IN PART OR DISCLOSED TO ANYONE WITHOUT THE DIRECT WRITTEN PERMISSION OF DANFOSS DRIVES, AND SHALL BE RETURNED UPON REQUEST.

REVISION HISTORY			
REV	ECN NUMBER	ENTRY BY	DATE
001	INITIAL RELEASE	CCN	06/15/12



1. MAX AIRFLOW (BACKCHANNEL) - 7 M³ / MIN (250 CFM)
2. MAX AIRFLOW (CABINET) - 1.7 M³ / MIN (60 CFM)
3. MAX WEIGHT = 128 KG (283 LBS)
4. CENTER OF GRAVITY:
APPROXIMATE LOCATION ONLY, LOCATION MAY VARY BASED ON POWER RATING AND OPTIONS ORDERED.

UNLESS OTHERWISE SPECIFIED INTERPRET DIM. AND TOL. PER ASME Y14.5M-1994

DIM. ARE IN MILLIMETERS WEIGHTS ARE IN KILOGRAMS

THIRD ANGLE PROJECTION

PROPERTIES			
MATERIAL	NA		
FINISH	NA		
THICKNESS	NA		
EST. WEIGHT	128.00		
APPROVALS	INITIALS	DATE	
DRAWN	ND	04/05/12	
CHECKED			
ENGR			

Danfoss

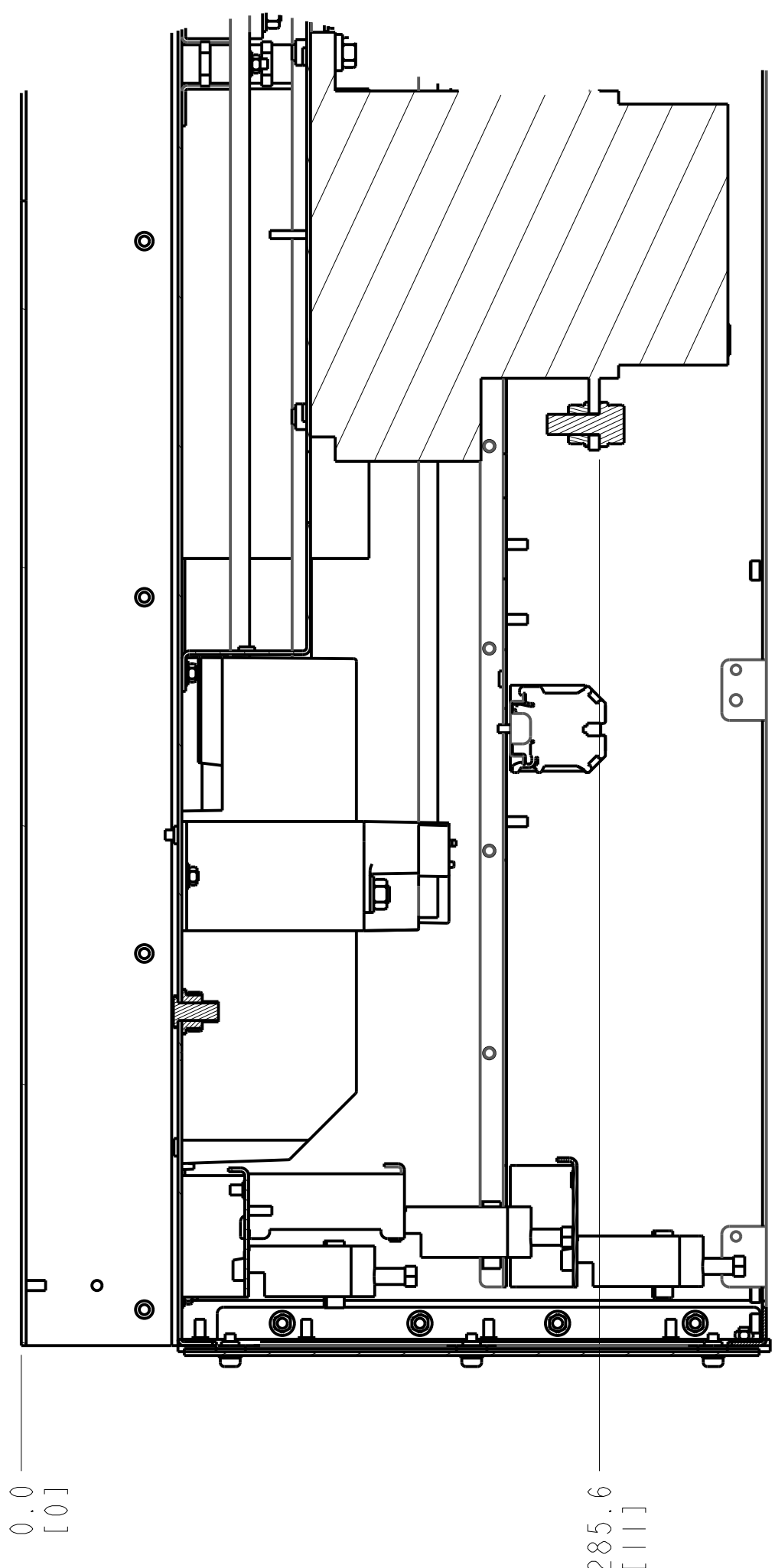
4401 N. BELL SCHOOL RD. LOVES PARK, ILLINOIS 61111 USA
 (815) 639-8000 FAX (815) 639-8000

INSTALLATION DRAWING, D6H, IP21/54

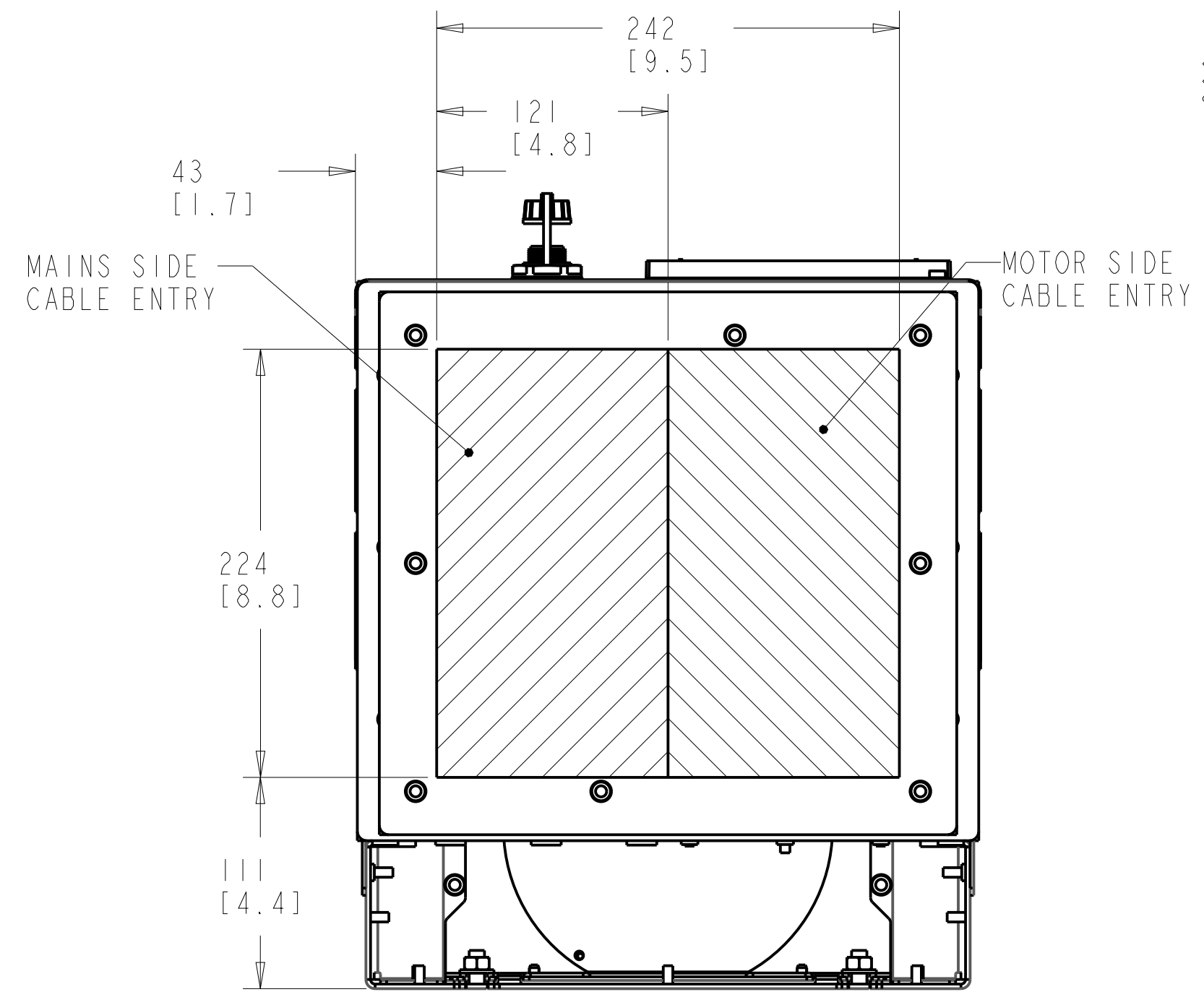
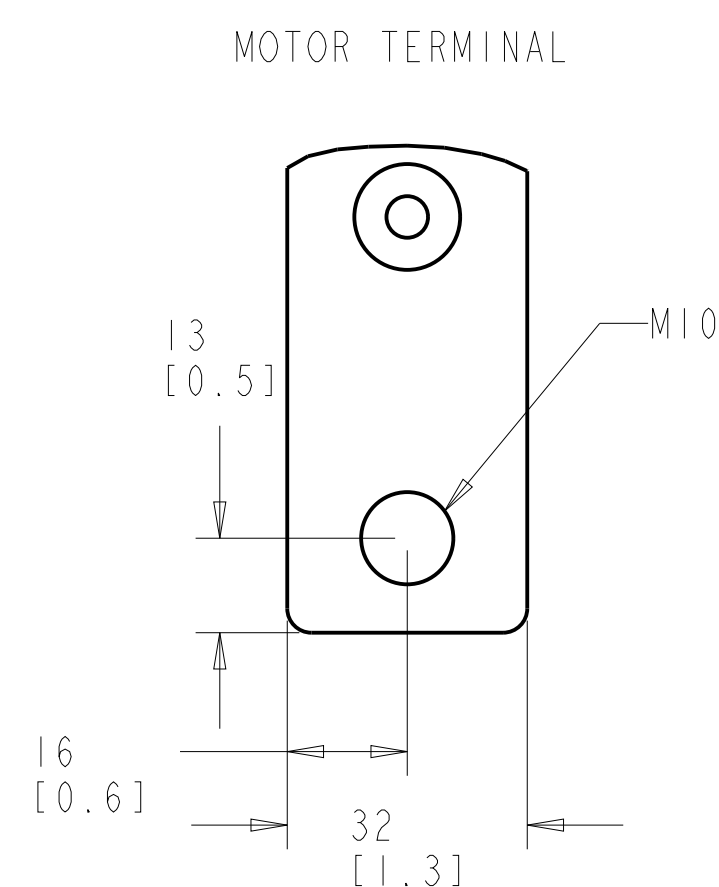
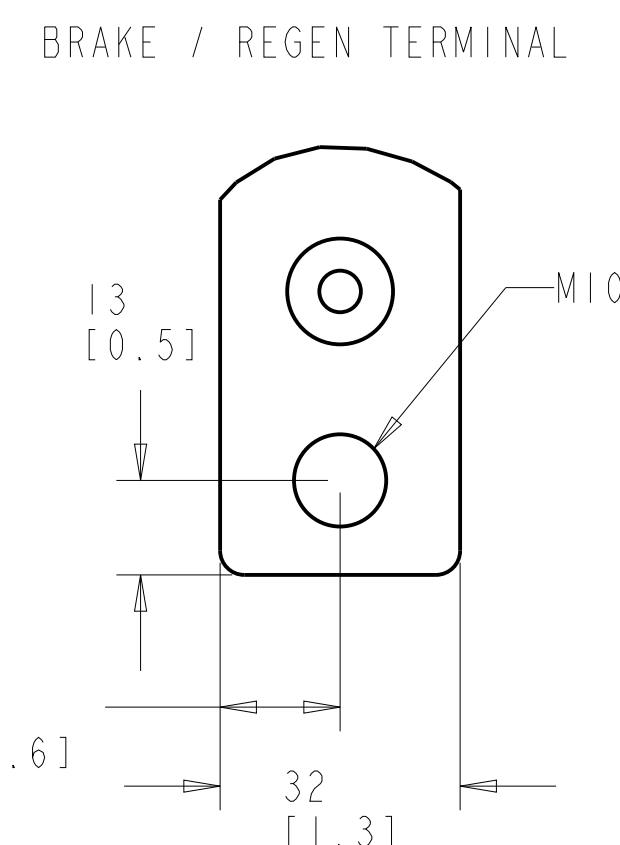
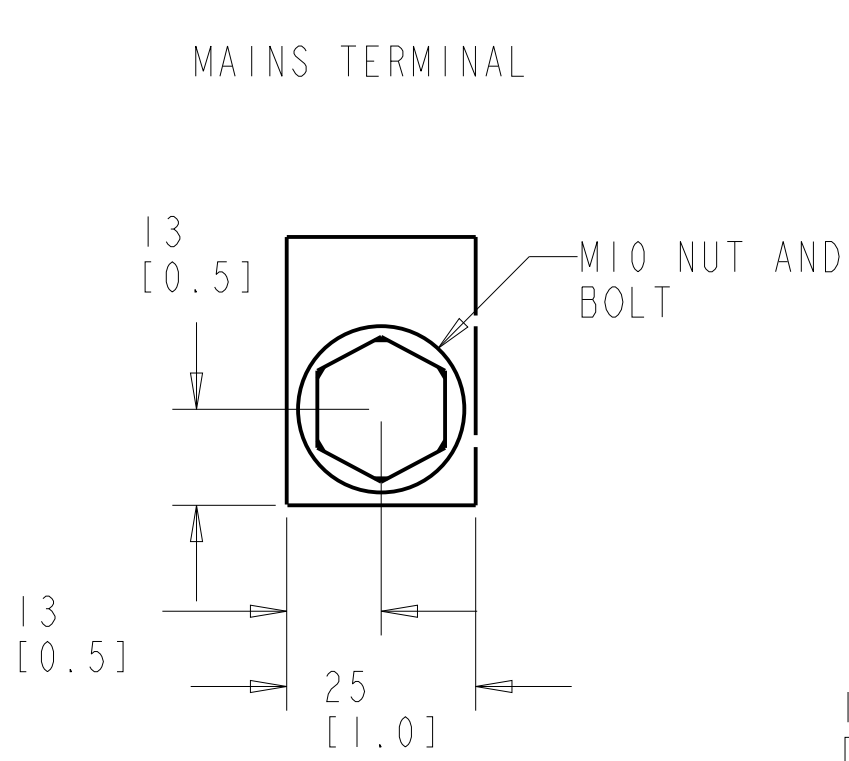
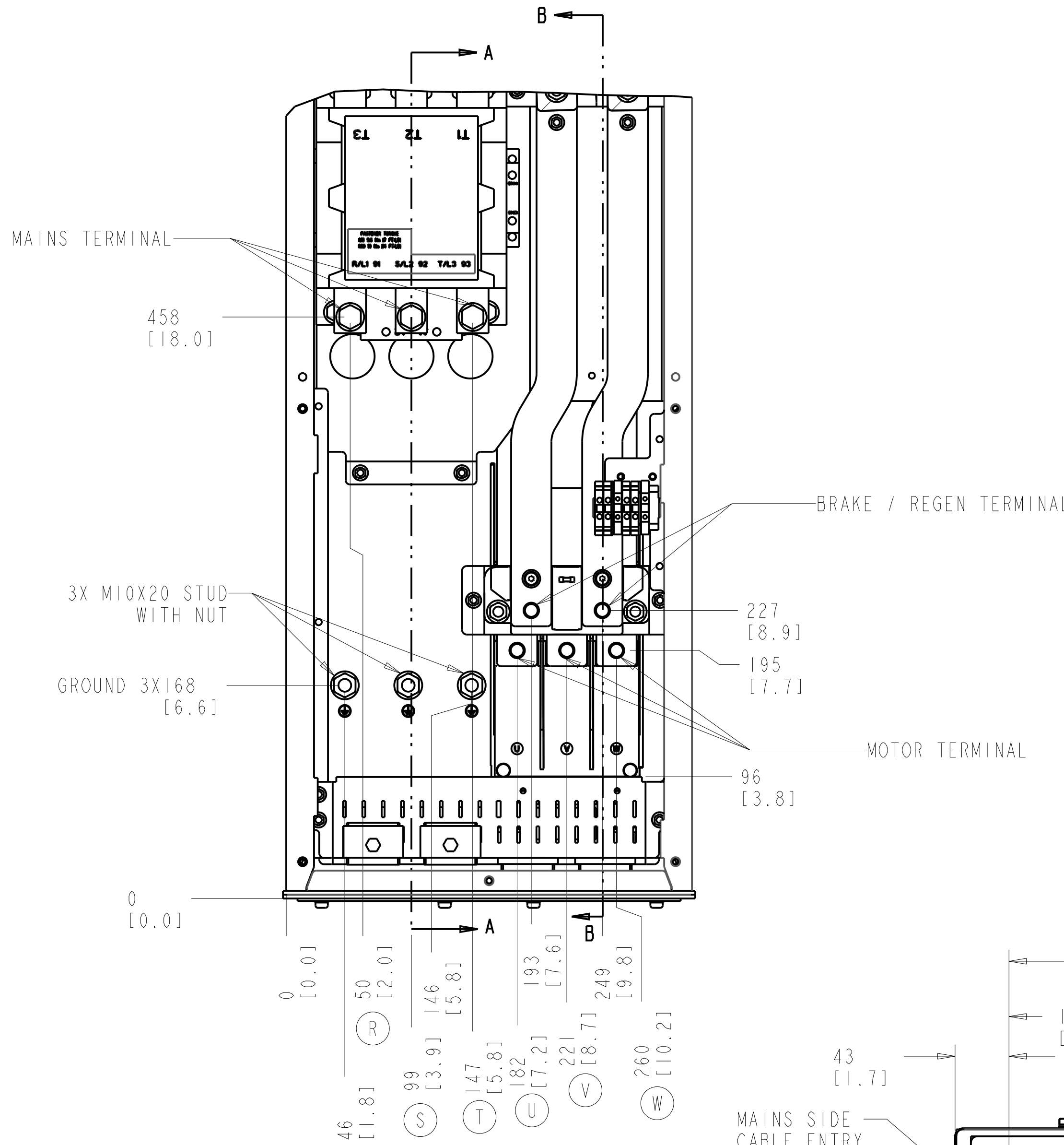
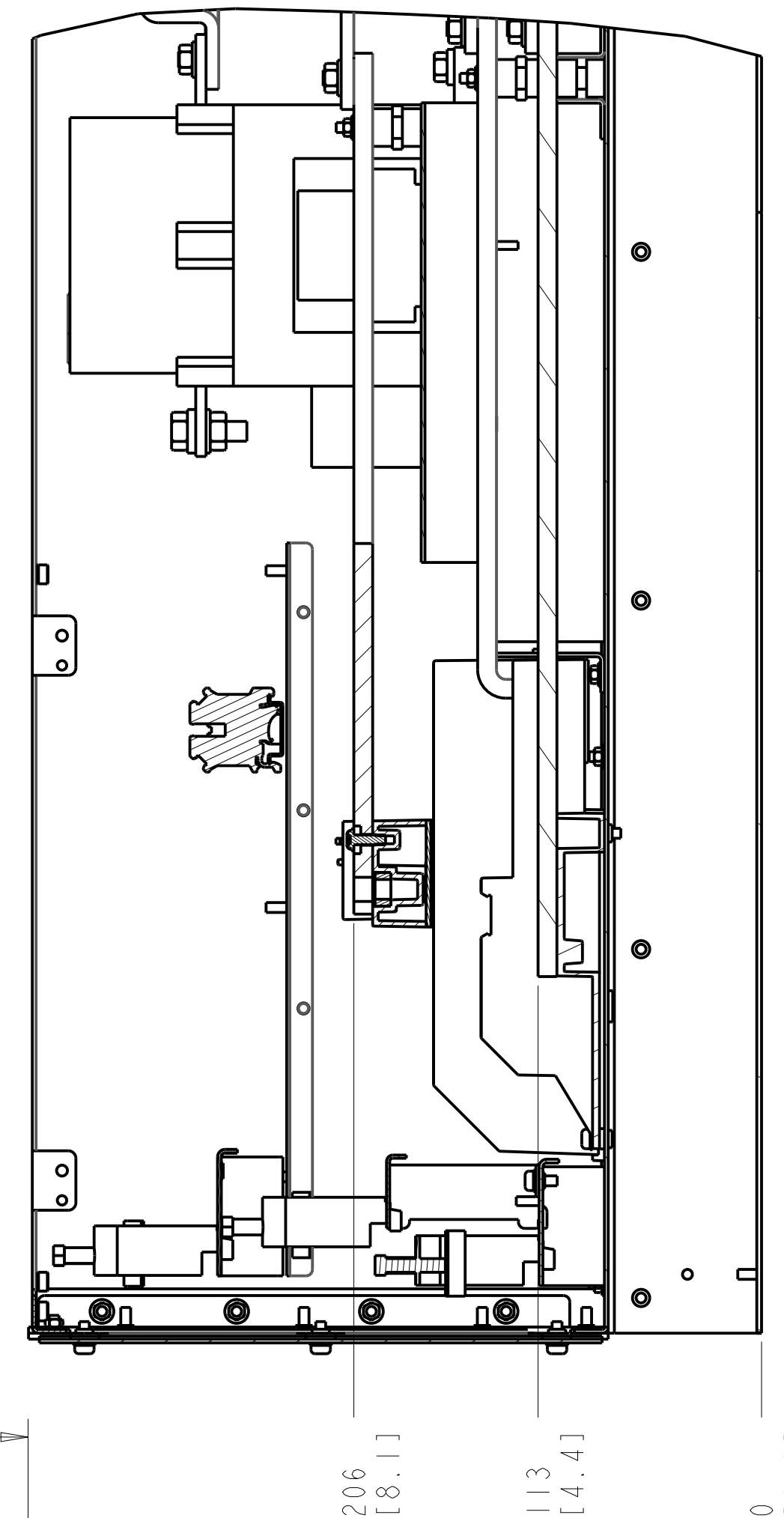
SIZE	D	MODEL		REV	001
SCALE	0.175	DRAWING NO.	177R0491	SHEET	1 OF 5

CONTACTOR ONLY

SECTION A-A
MAINS TERMINALS



SECTION B-B
MOTOR TERMINALS
BRAKE / REGEN TERMINALS

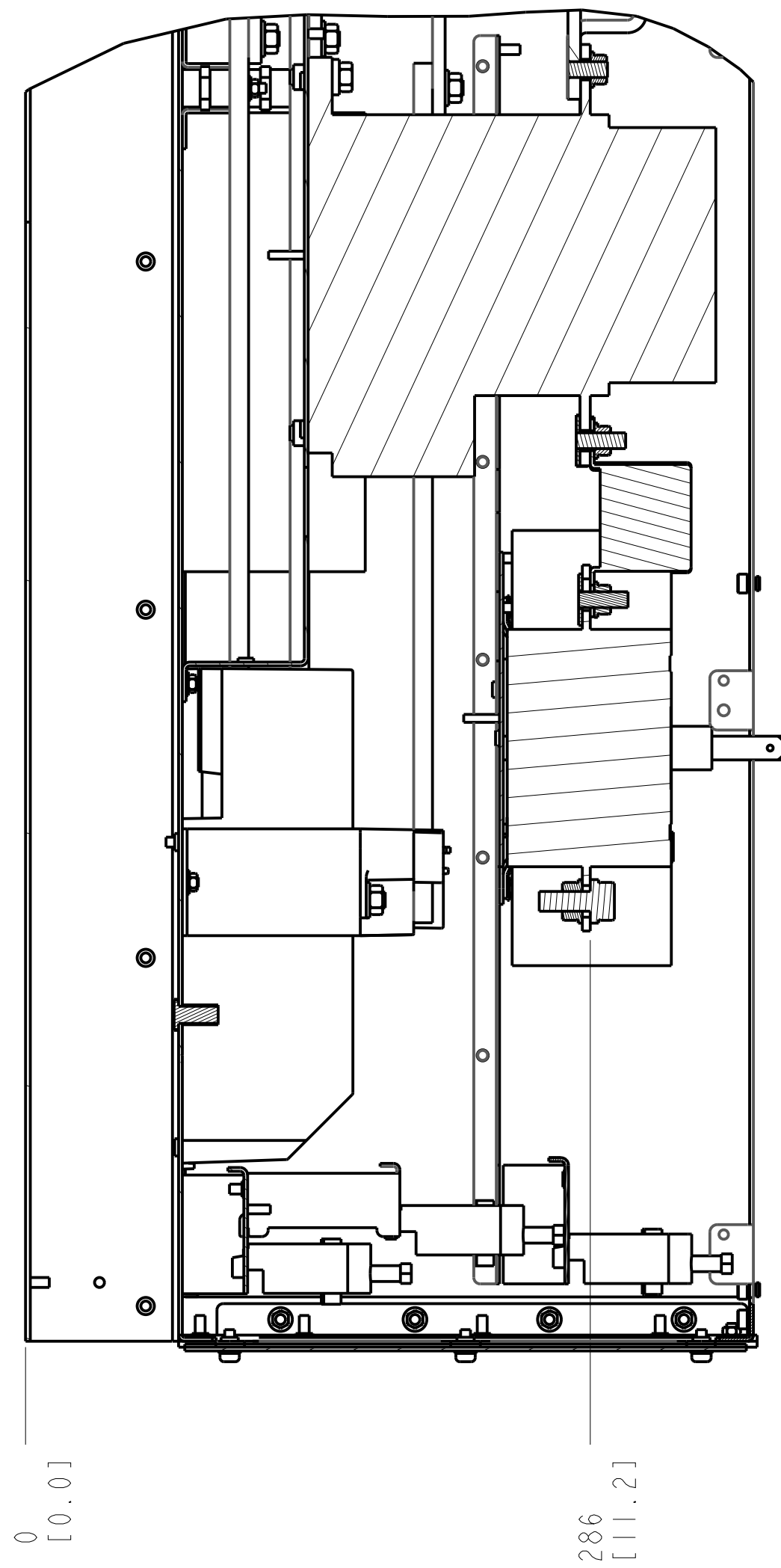


- NOTES:
1. PLACE CABLES THROUGH MARKED AREAS
 2. 95MM² (310 MCM) MAX WIRE SIZE

TITLE			
INSTALLATION DRAWING, D6H, IP21/54			
SIZE	MODEL	REV	
D	P454-1018	P1	
SCALE	DRAWING NO.	SHEET	
0.350	177R0491	2 OF 5	

CONTACTOR AND DISCONNECT

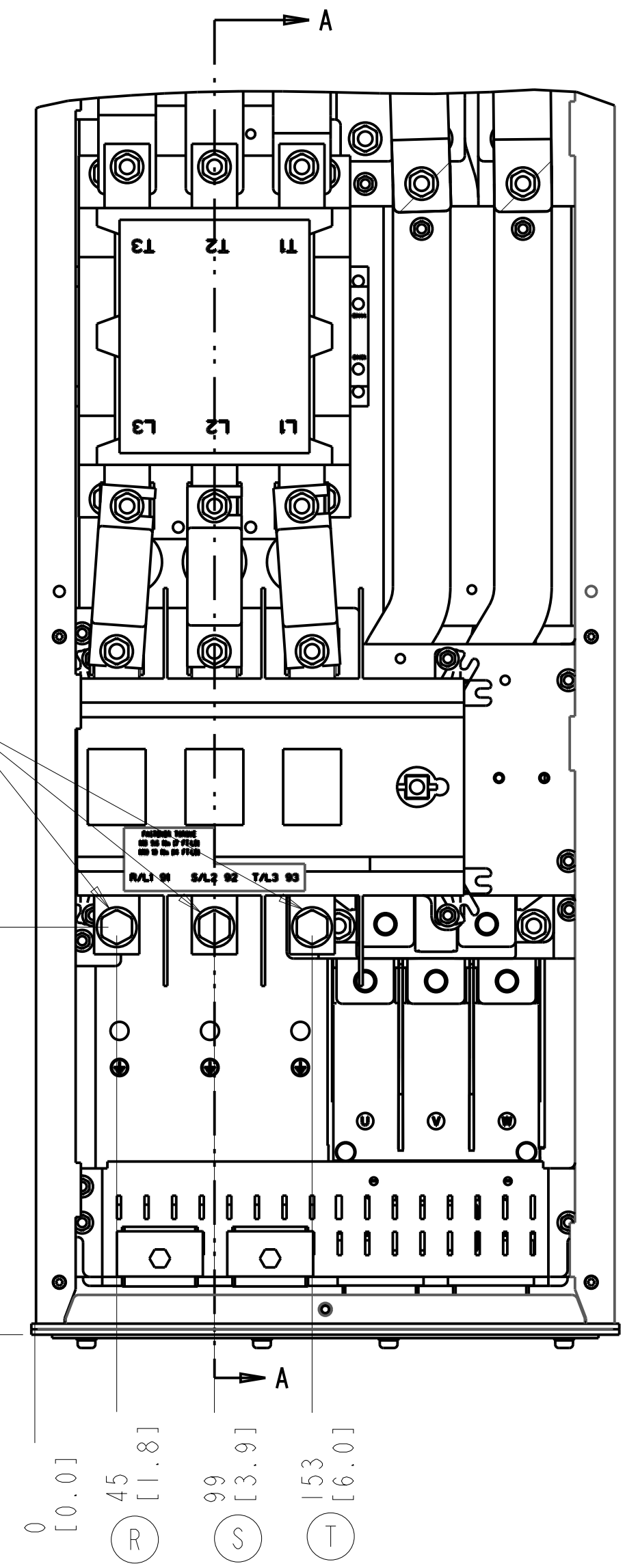
SECTION A-A
MAINS TERMINALS



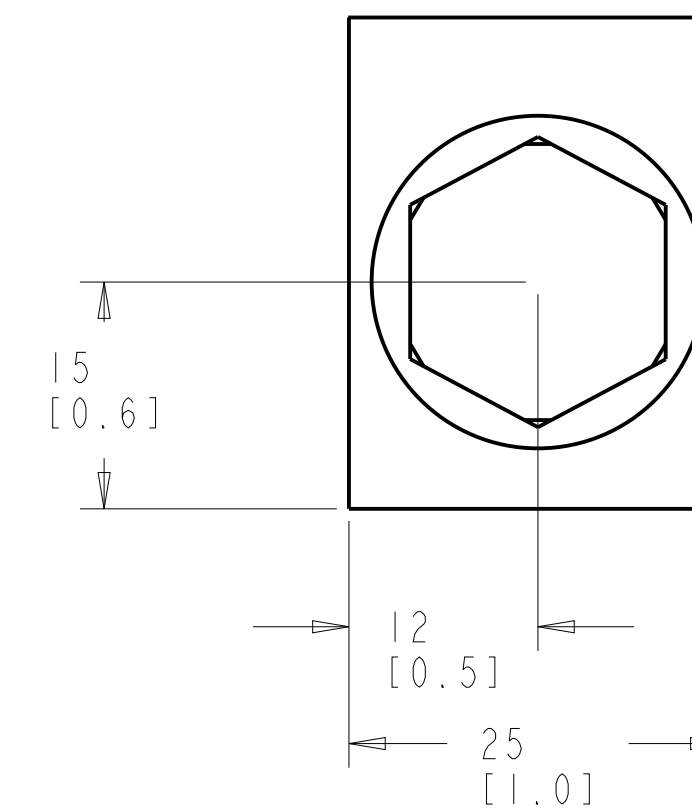
MAINS TERMINAL

225 [8.9]

0 [0.0]



MAINS TERMINAL



NOTES:

1. REFER SHEET 2 FOR BRAKE AND MOTOR TERMINAL DETAILS

TITLE		
INSTALLATION DRAWING, D6H, IP21/54		
SIZE D	MODEL P454-1018	REV P1
SCALE 0.175	DRAWING NO. 177R0491	SHEET 3 OF 5

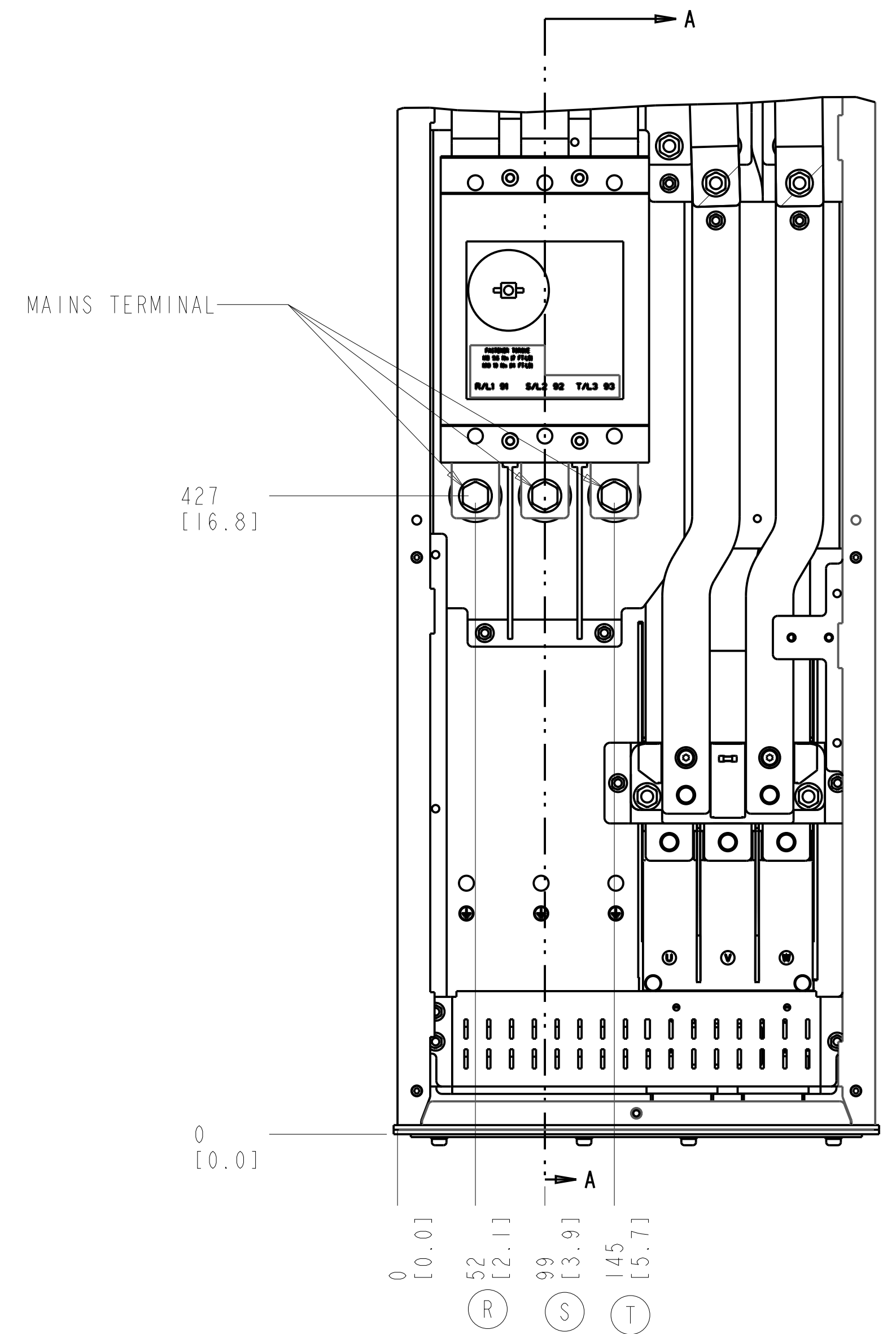
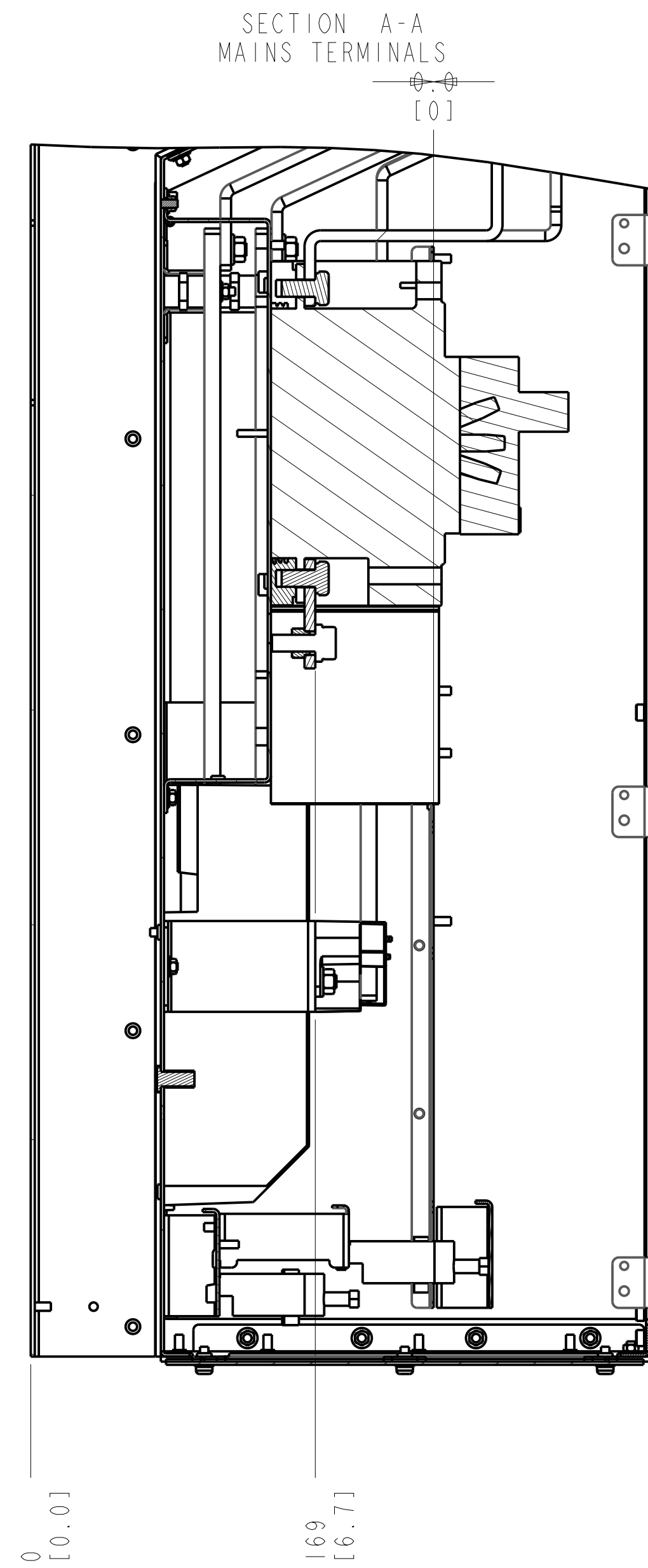
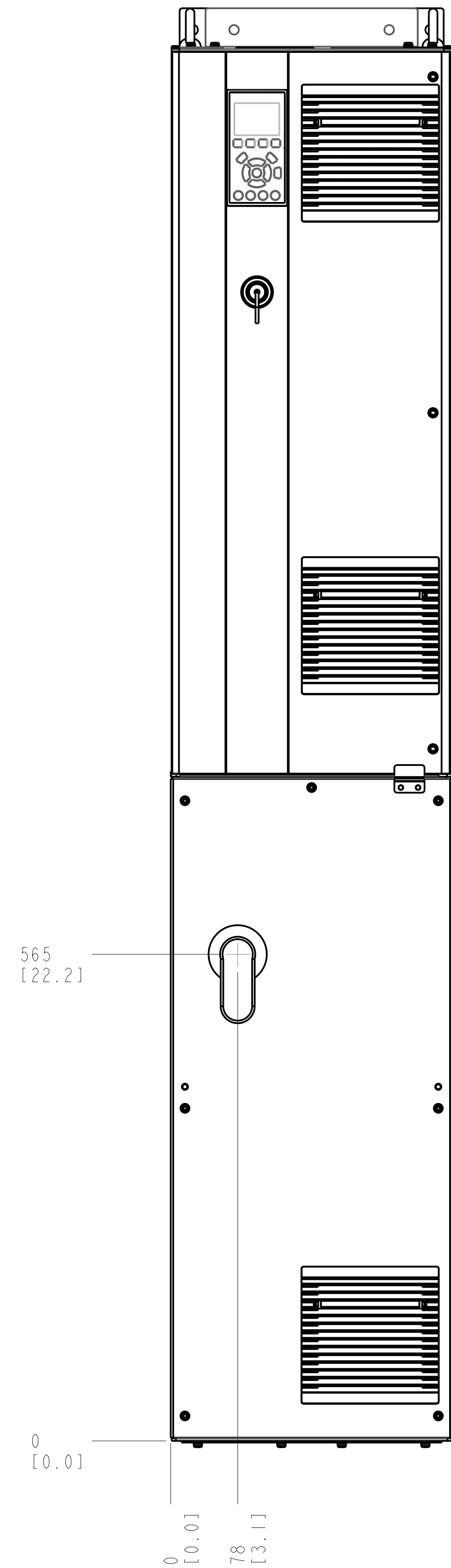
303 [11.9]

0 [0.0]

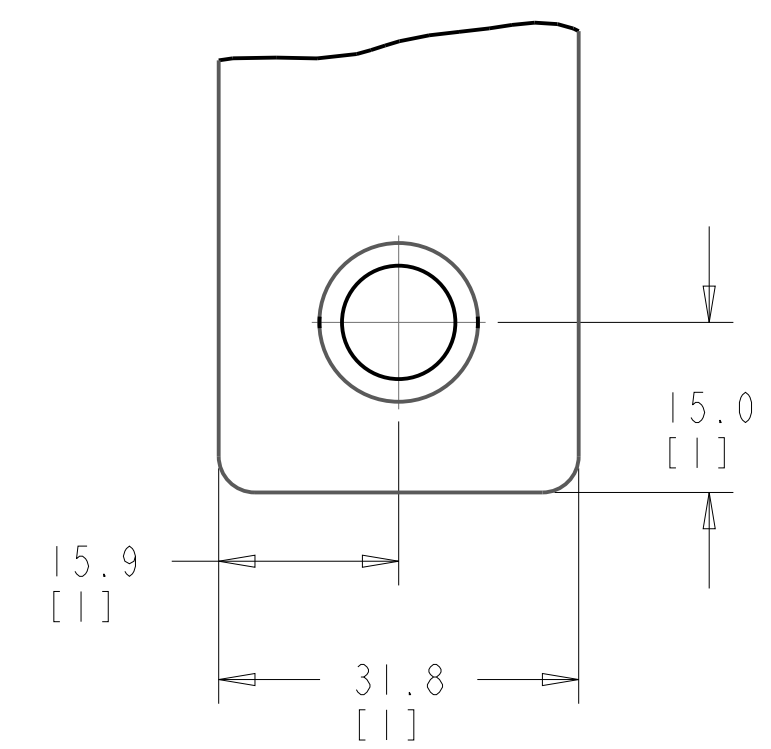
0 [0.0]

211 [8.3]

CIRCUIT BREAKER



MAINS TERMINAL
SCALE 1.500



NOTES:
1. REFER SHEET 2 FOR BRAKE AND MOTOR
TERMINAL DETAILS

TITLE		
INSTALLATION DRAWING, D6H, IP21/54		
SIZE D	MODEL P454-1018	REV P1
SCALE 0.350	DRAWING NO. 177R0491	SHEET 4 OF 5

THE TABLES BELOW ARE USED TO DETERMINE THE FRAME SIZE FOR A GIVEN POWER AND VOLTAGE RATING, WITH A CIRCUIT BREAKER, CONTACTOR OR CONTACTOR+DISCONNECT.

1) IDENTIFY THE POWER IN NORMAL OVERLOAD (N.O.) OR HIGH OVERLOAD (H.O.), KILOWATTS (KW) OR HORSEPOWER (HP).

2) READ DOWN THE COLUMN TO THE ROW WITH THE CORRECT VOLTAGE TO IDENTIFY THE FRAME SIZE.

THIS DRAWING IS FOR D6H FRAMES,

THE TABLE BELOW CAN BE USED TO DETERMINE THE FRAME SIZE IF THE SPECIFIC MODEL/TYPE CODE WITH A CIRCUIT BREAKER, CONTACTOR OR CONTACTOR+DISCONNECT.

KW RATED DRIVES					
KW HIGH OVERLOAD	75	90	110	132	160
KW NORMAL OVERLOAD	90	110	132	160	200
400V		D6H	D6H	D6H	
500V			D6H	D6H	D6H
525V	D6H	D6H	D6H	D6H	
690V		D6H	D6H	D6H	

HORSEPOWER RATED DRIVES				
HP HIGH OVERLOAD	100	125	150	200
HP NORMAL OVERLOAD	125	150	200	250
460V		D6H	D6H	D6H
575V	D6H	D6H	D6H	

PLATFORM	VOLTAGE	MODEL/TYPECODE	FRAME(IP21/IP54)
HVAC	T4	FC-102N110T4	D6H
		FC-102N132T4	
		FC-102N160T4	
	T7	FC-102N110T7	
		FC-102N132T7	
		FC-102N160T7	
AQUA	T4	FC-202N110T4	
		FC-202N132T4	
		FC-202N160T4	
	T7	FC-202N110T7	
		FC-202N132T7	
		FC-202N160T7	
AUTOMATION	T5	FC-302N90KT5	
		FC-302N110T5	
		FC-302N132T5	
	T7	FC-302N90KT7	
		FC-302N110T7	
		FC-302N132T7	