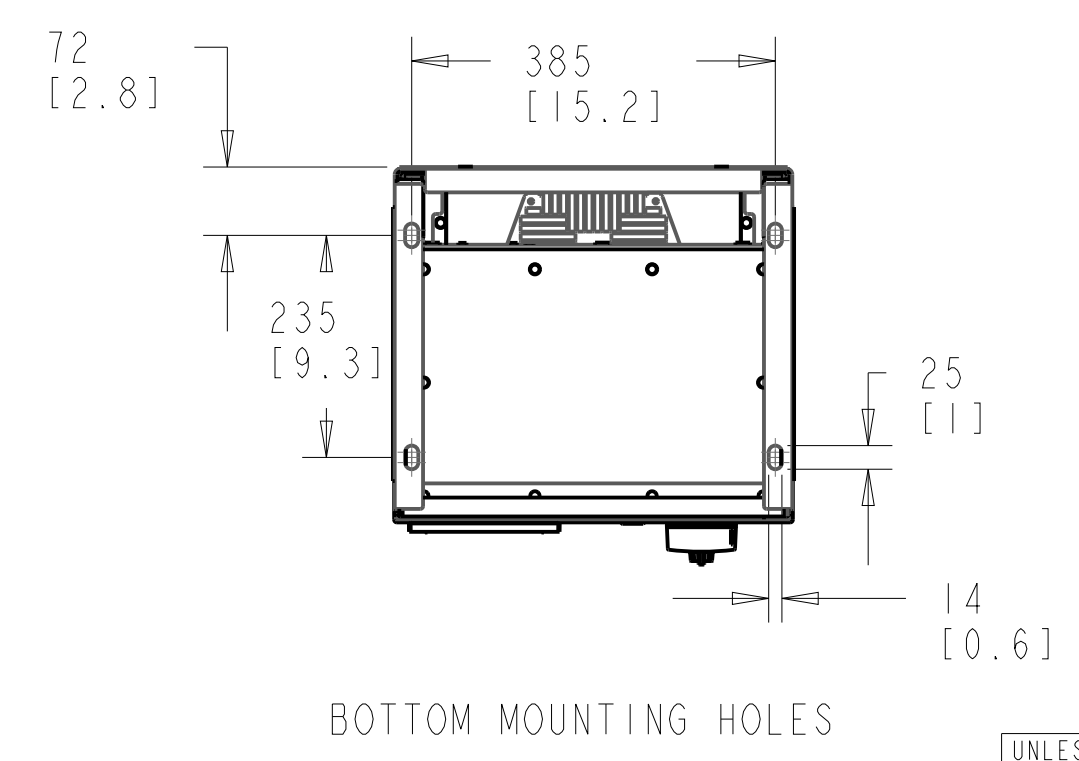
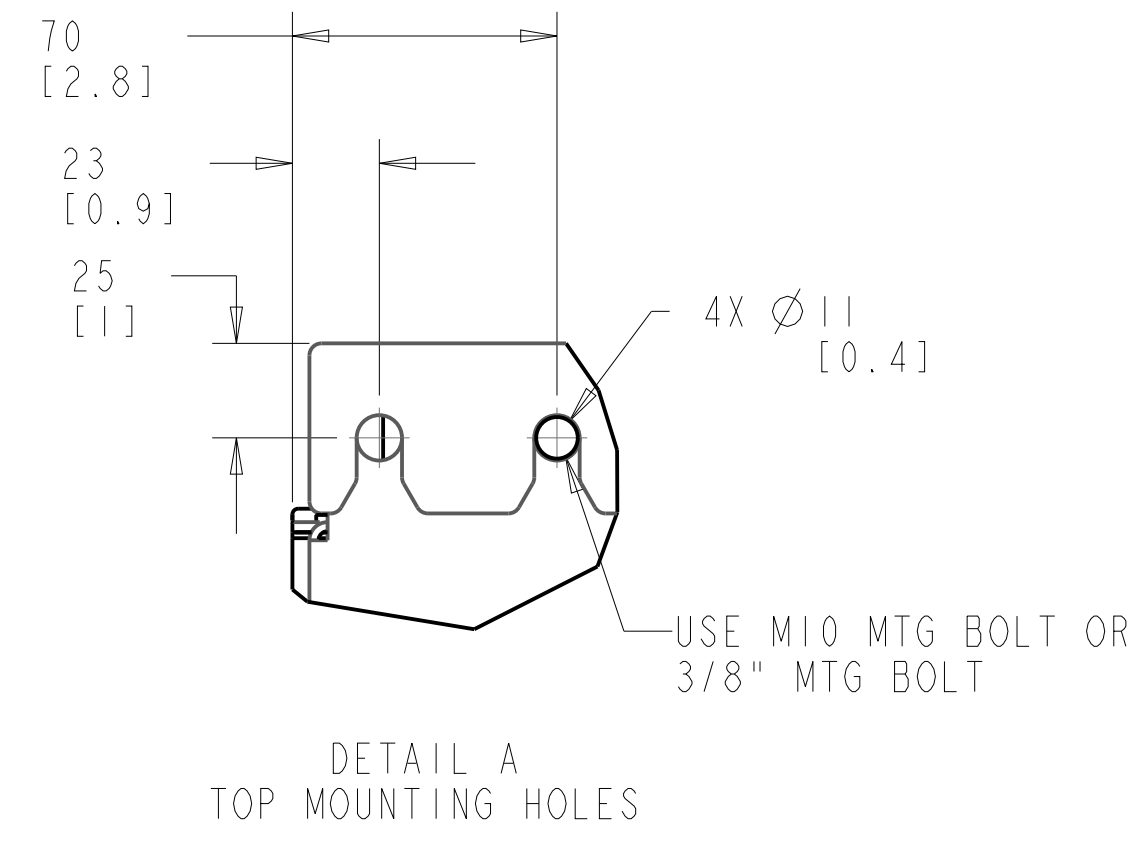
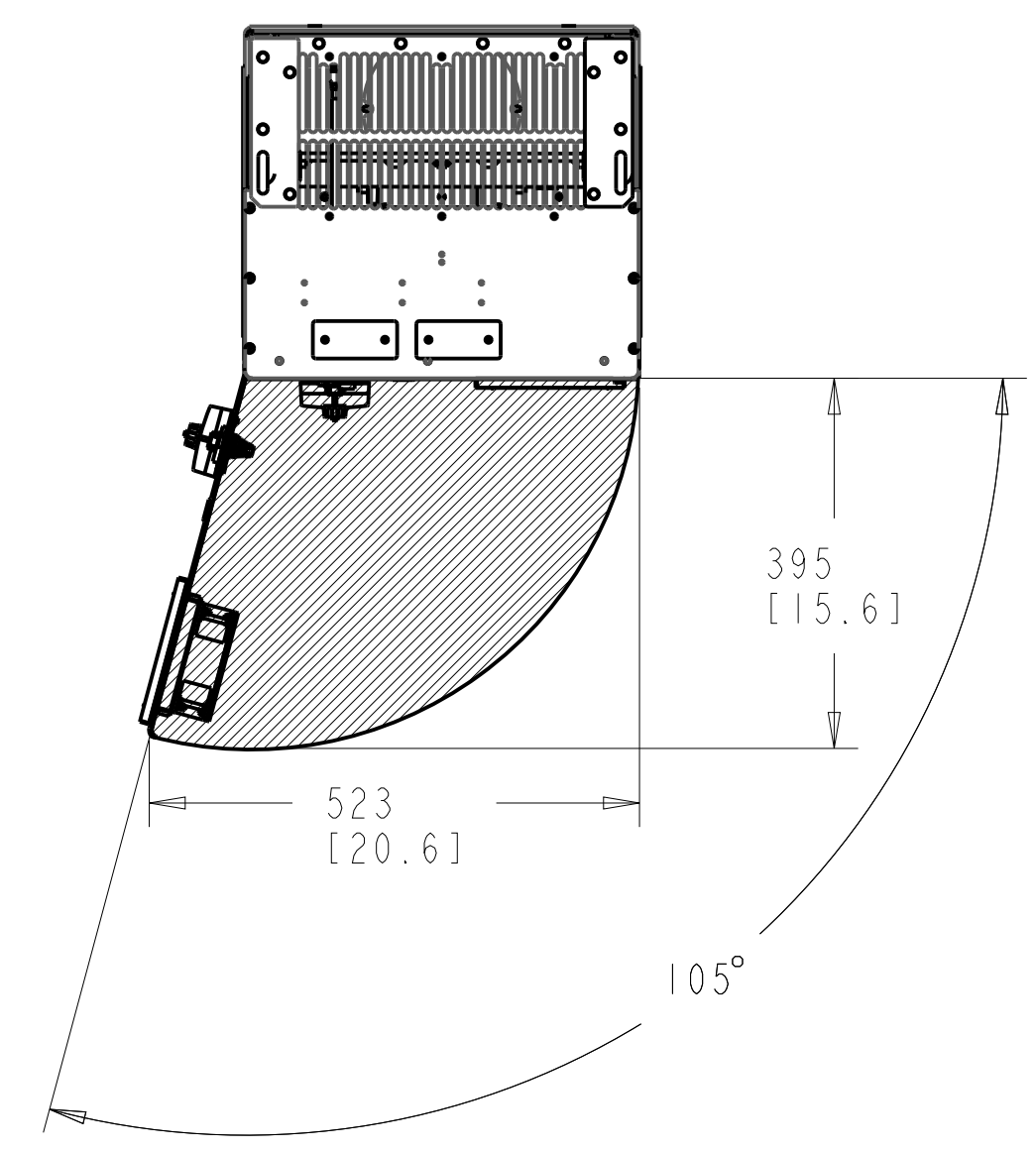
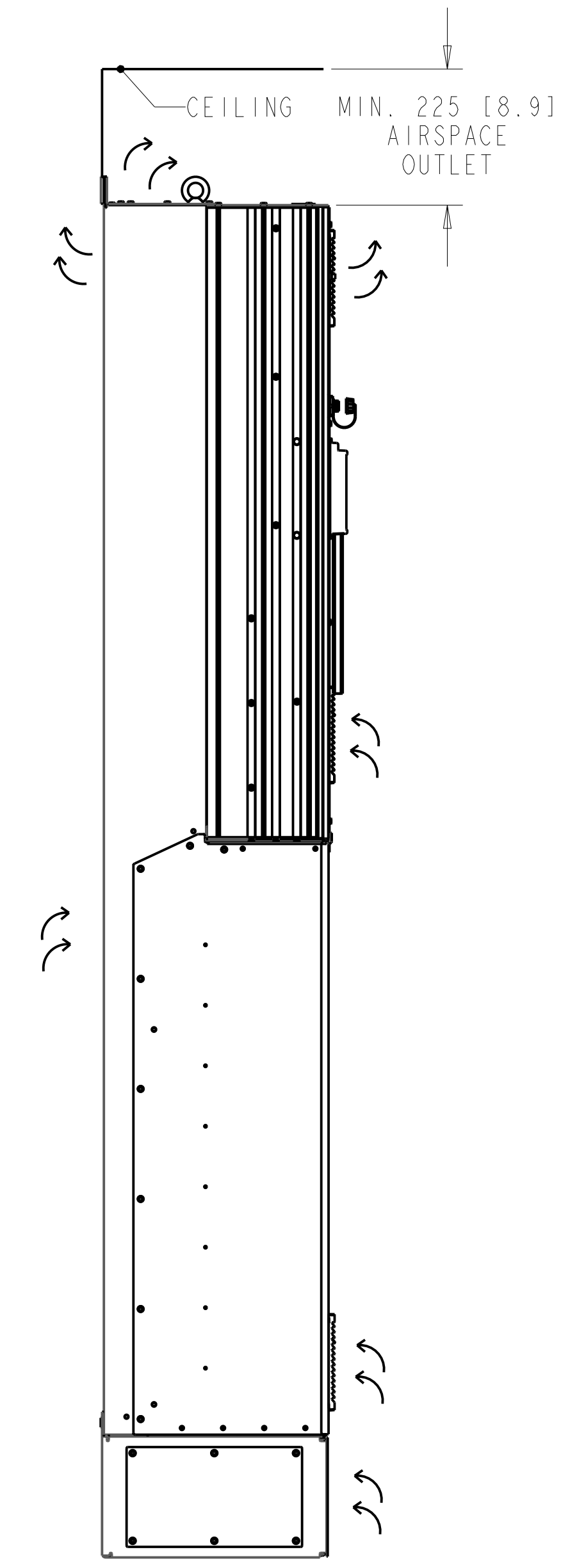
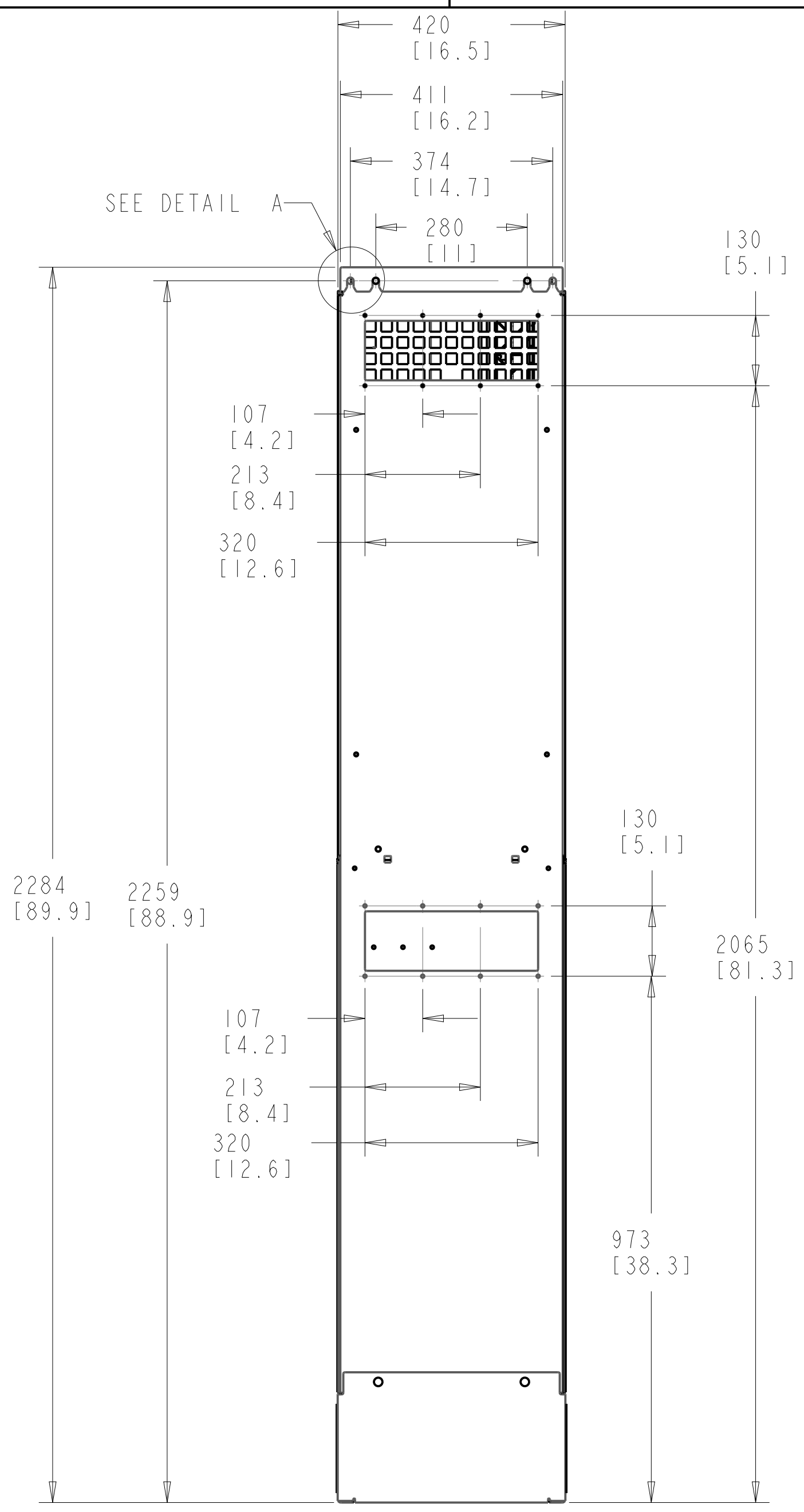
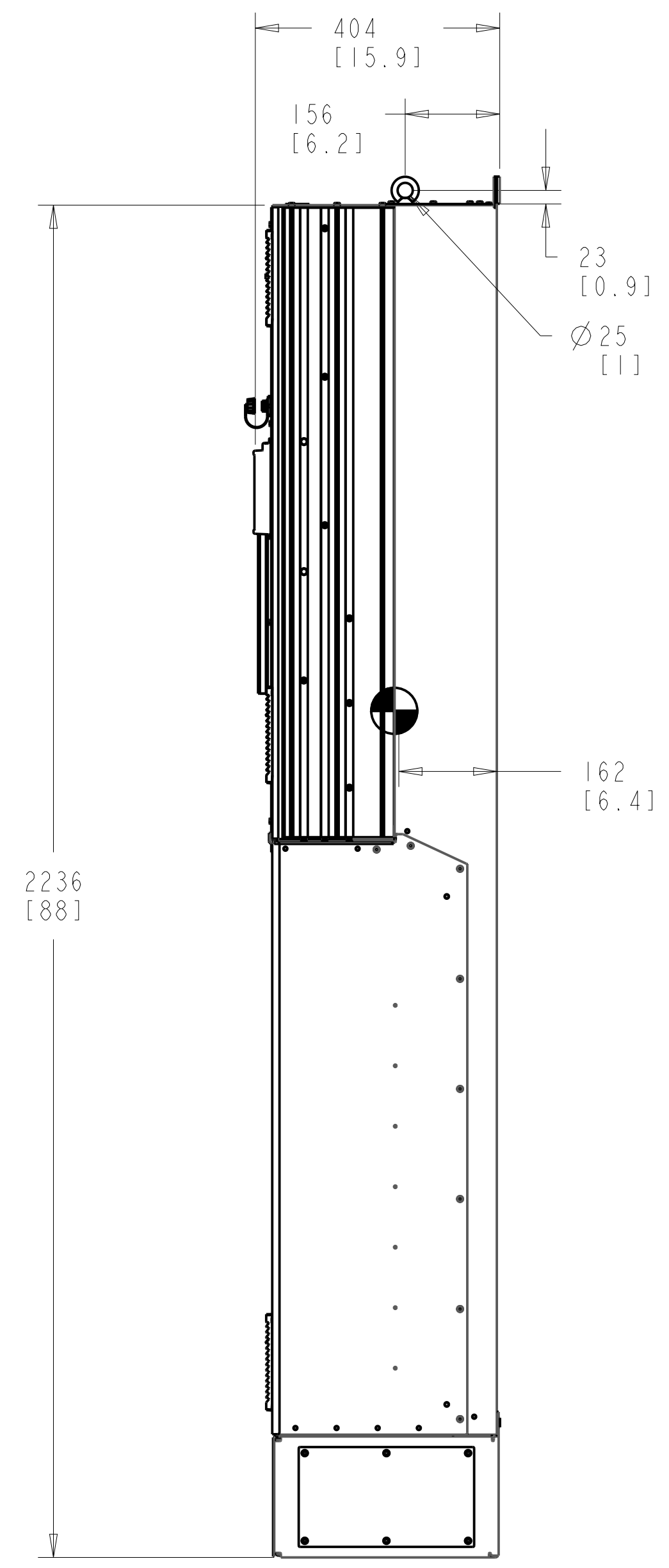
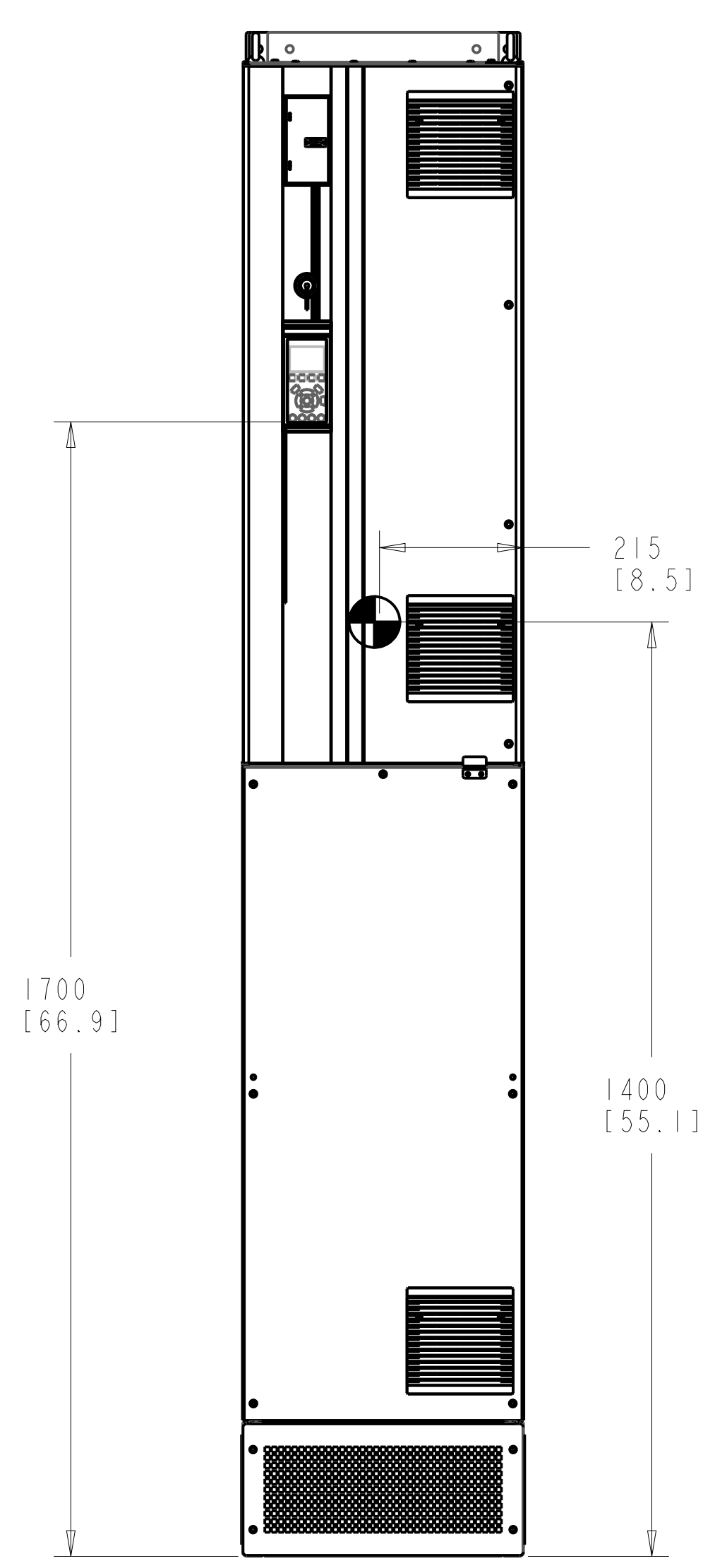


- NOTICE -
 THIS DOCUMENT CONTAINS PROPRIETARY INFORMATION OF DANFOSS DRIVES. IT IS LOANED BY DANFOSS DRIVES SUBJECT TO THE CONDITIONS THAT IT AND THE INFORMATION EMBODIED THEREIN SHALL BE USED ONLY FOR RECORD AND REFERENCE PURPOSES. SHALL NOT BE USED OR CAUSED TO BE USED IN ANY WAY PREJUDICIAL TO THE INTERESTS OF DANFOSS DRIVES. SHALL NOT BE REPRODUCED OR COPIED IN WHOLE OR IN PART OR DISCLOSED TO ANYONE WITHOUT THE DIRECT WRITTEN PERMISSION OF DANFOSS DRIVES, AND SHALL BE RETURNED UPON REQUEST.

REVISION HISTORY			
REV	ECN NUMBER	ENTRY BY	DATE
001	INITIAL RELEASE	CCN	06/18/12



1. MAX AIRFLOW (BACKCHANNEL) - 14 M³ / MIN (500 CFM)
2. MAX AIRFLOW (CABINET) - 3.4 M³ / MIN (120 CFM)
3. MAX WEIGHT = 232 KG (512 LBS)
4. CENTER OF GRAVITY:
 APPROXIMATE LOCATION ONLY, LOCATION MAY VARY BASED ON POWER RATING AND OPTIONS ORDERED.

UNLESS OTHERWISE SPECIFIED INTERPRET DIM. AND TOL. PER ASME Y14.5M-1994
 .X±0.4 .XX±0.20 ±0.5
 DIM. ARE IN MILLIMETERS
 WEIGHTS ARE IN KILOGRAMS
 THIRD ANGLE PROJECTION

PROPERTIES		
MATERIAL	NA	
FINISH	NA	
THICKNESS	NA	
EST. WEIGHT	232.00	
APPROVALS	INITIALS	DATE
DRAWN	ND	03/28/12
CHECKED		
ENGR		

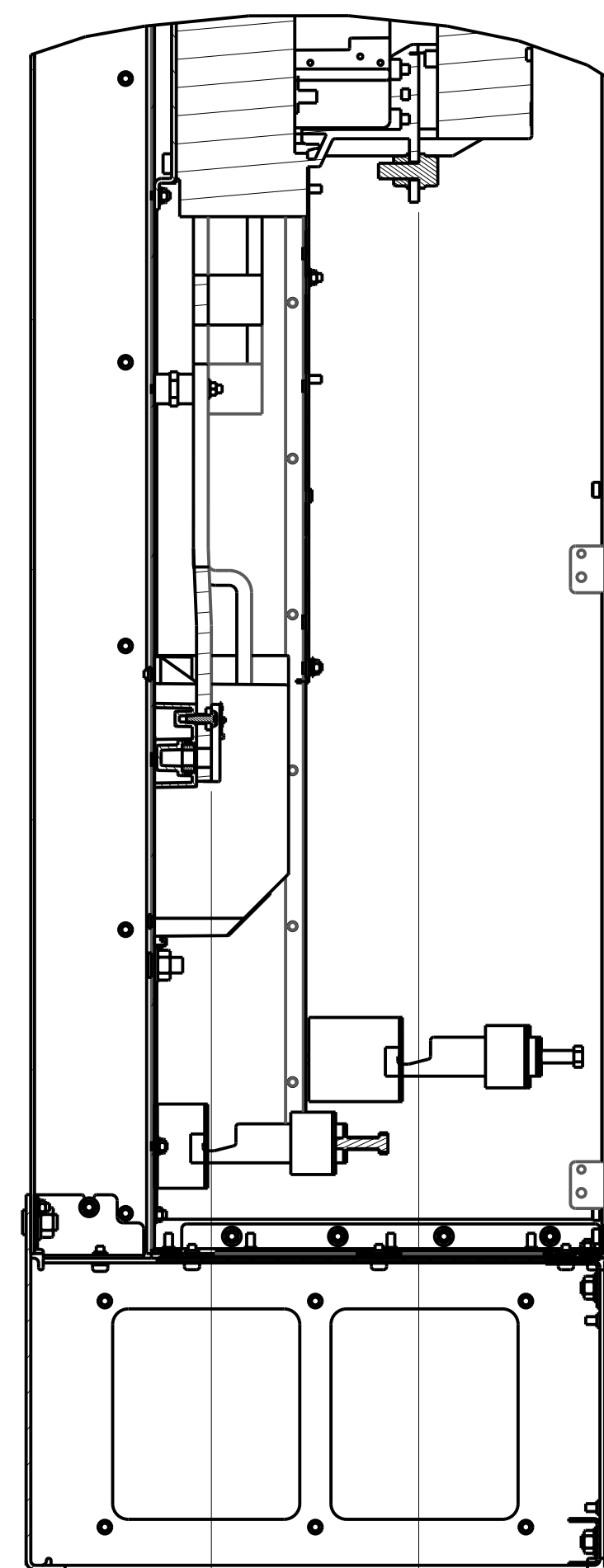
Danfoss
 4401 N. BELL SCHOOL RD. LOVES PARK, ILLINOIS 61111 USA
 (815) 639-8000 FAX (815) 639-8000

INSTALLATION DRAWING, DBH, IP21/54

SIZE	D	MODEL	P454-1042	REV	001
SCALE	0.125	DRAWING NO.	177R0493	SHEET	1 OF 5

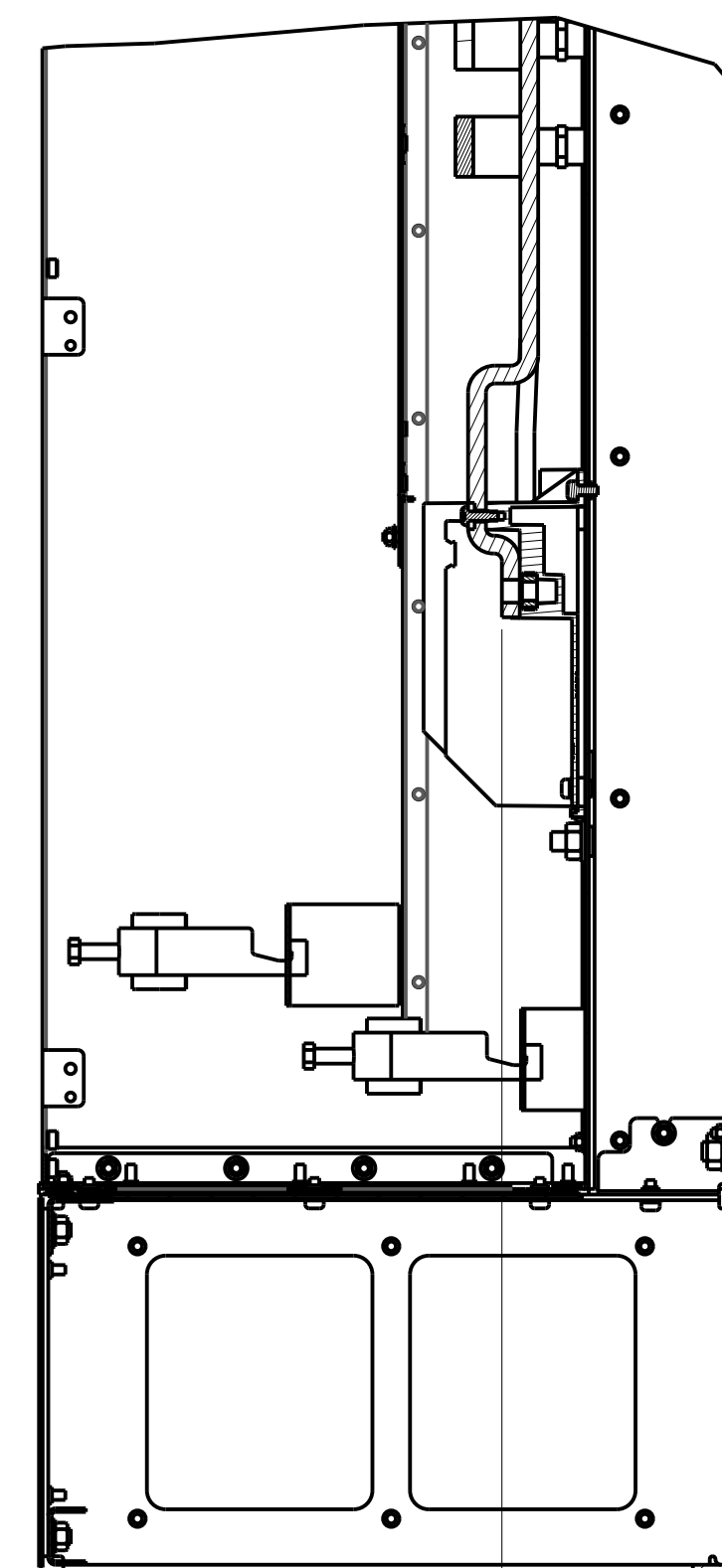
CONTACTOR ONLY

SECTION A-A
MAINS TERMINALS
BRAKE/REGEN TERMINALS

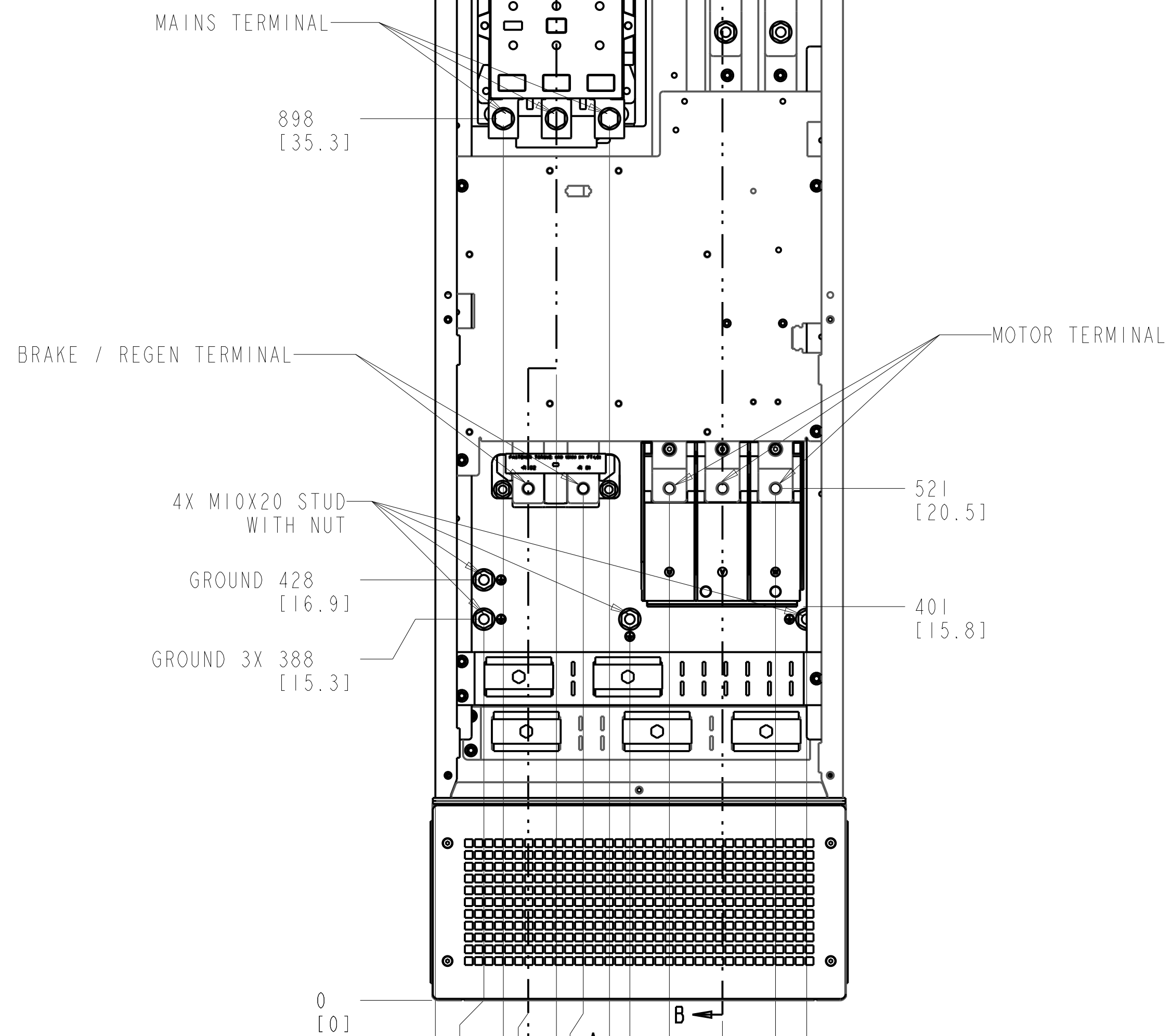


0 [0]
119 [4.7]
252 [9.9]

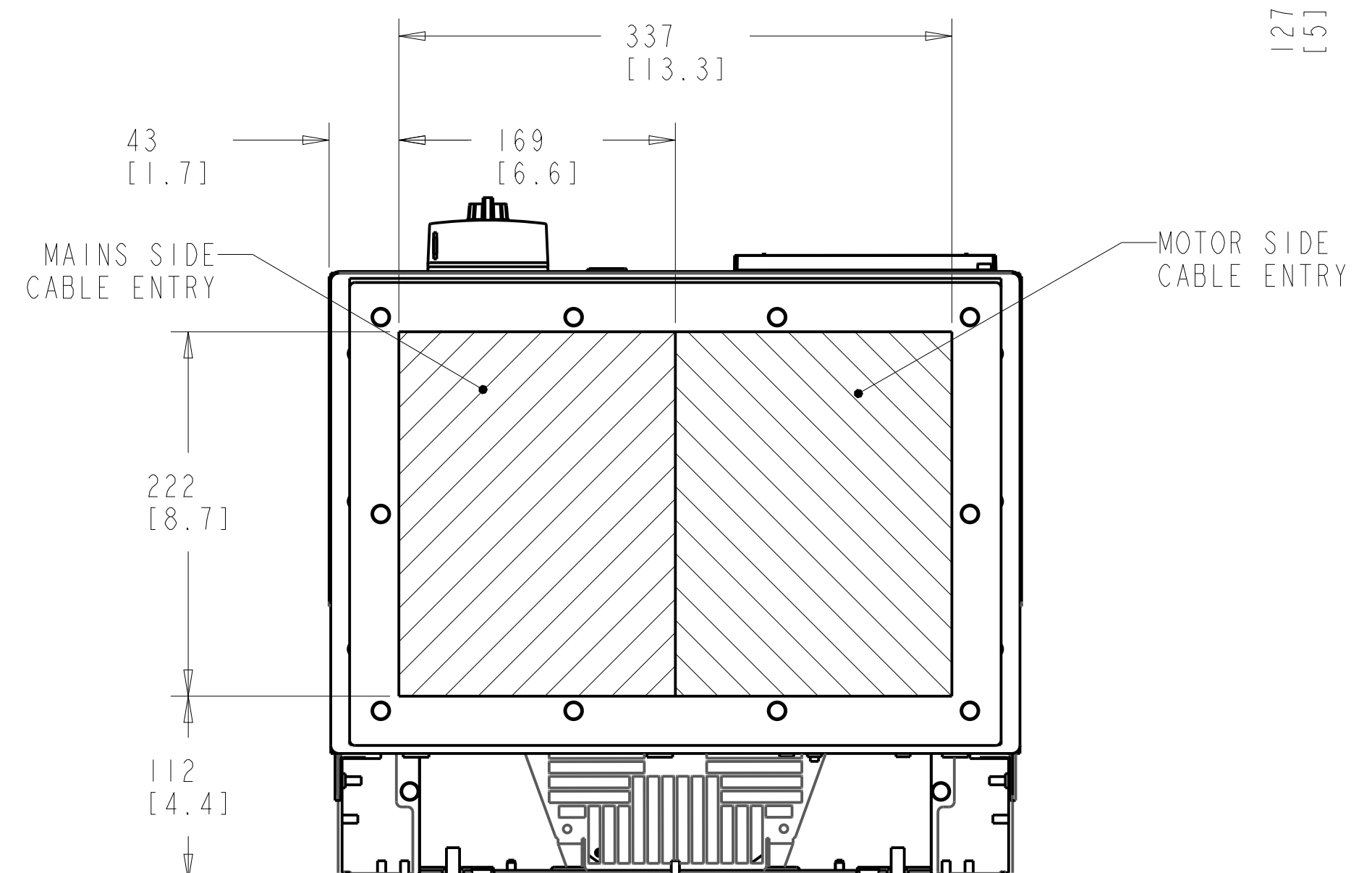
SECTION B-B
MOTOR TERMINALS



127 [5]
0 [0]

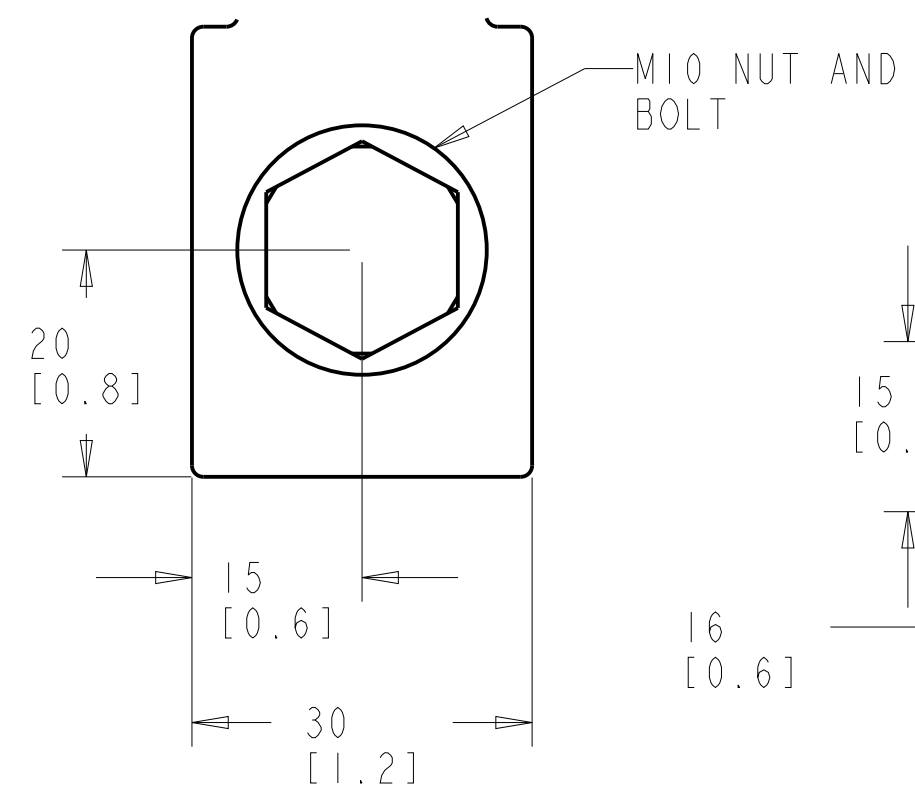


0 [0]
49 [1.9]
95 [3.7]
151 [5.9]
198 [7.8]
292 [11.5]
378 [14.9]
69 [2.7]
123 [4.9]
177 [7]
238 [9.4]
346 [13.6]

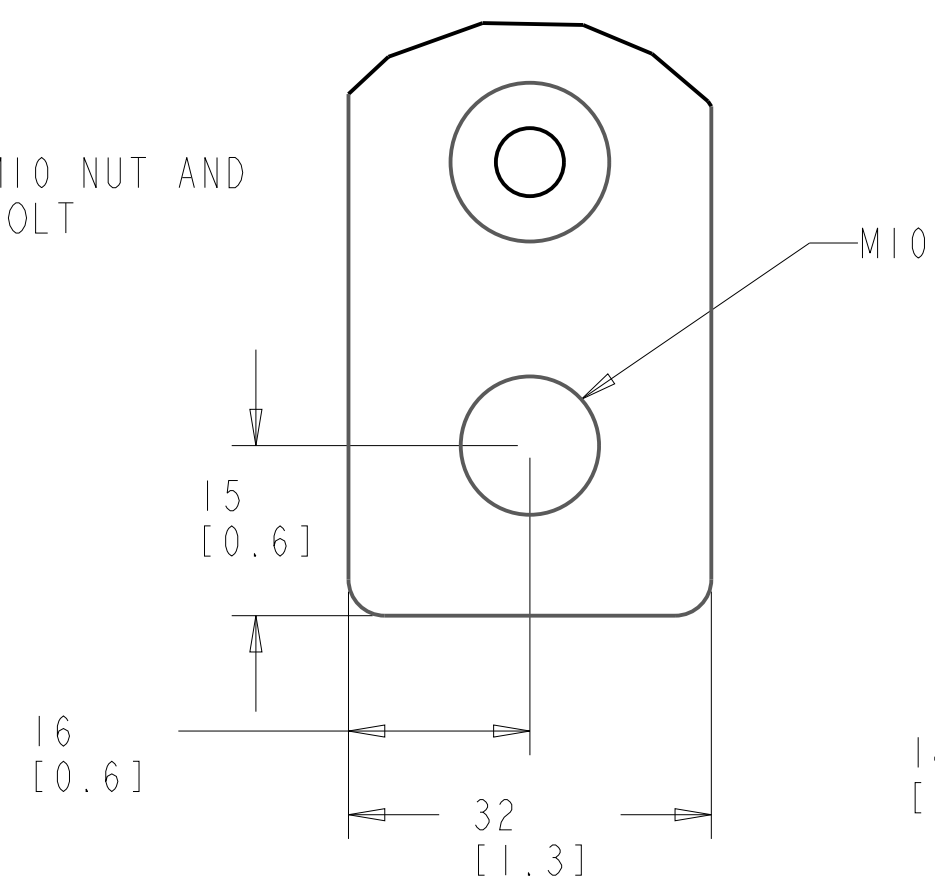


BOTTOM VIEW

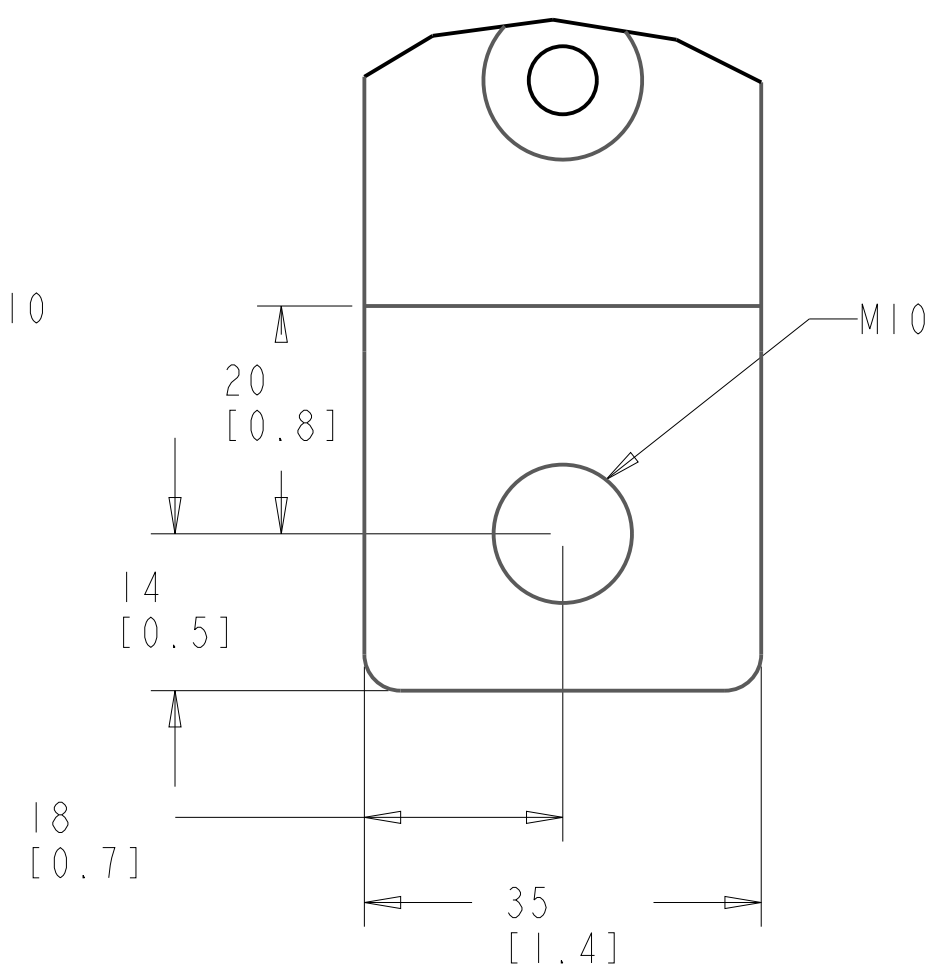
MAINS TERMINAL



BRAKE TERMINAL



MOTOR TERMINAL

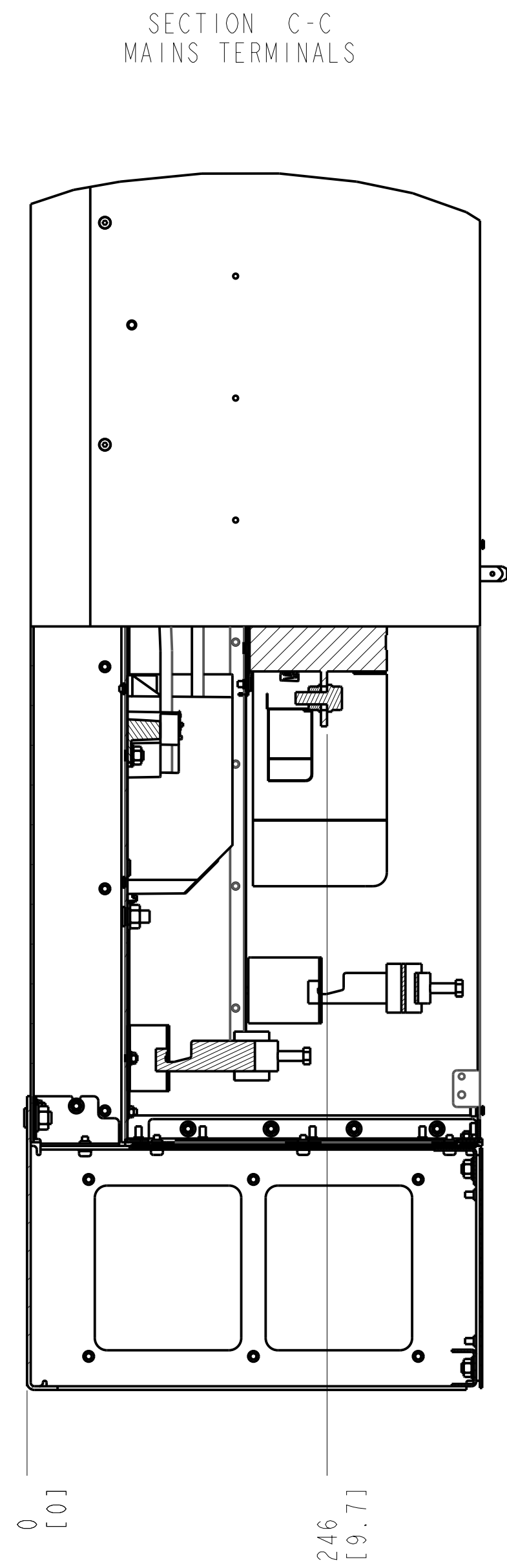
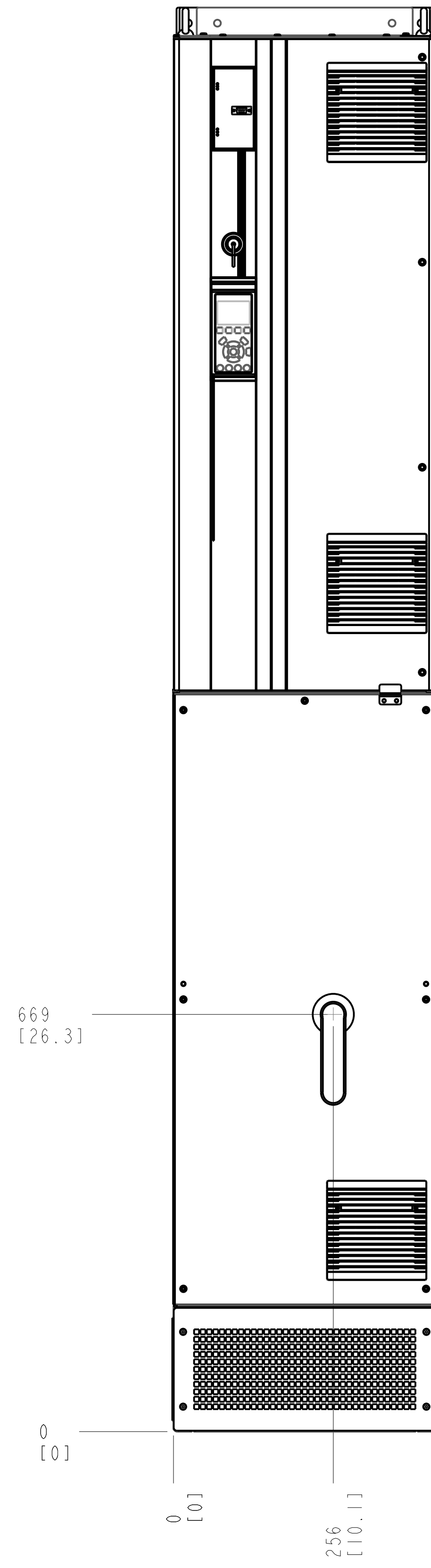


NOTES:

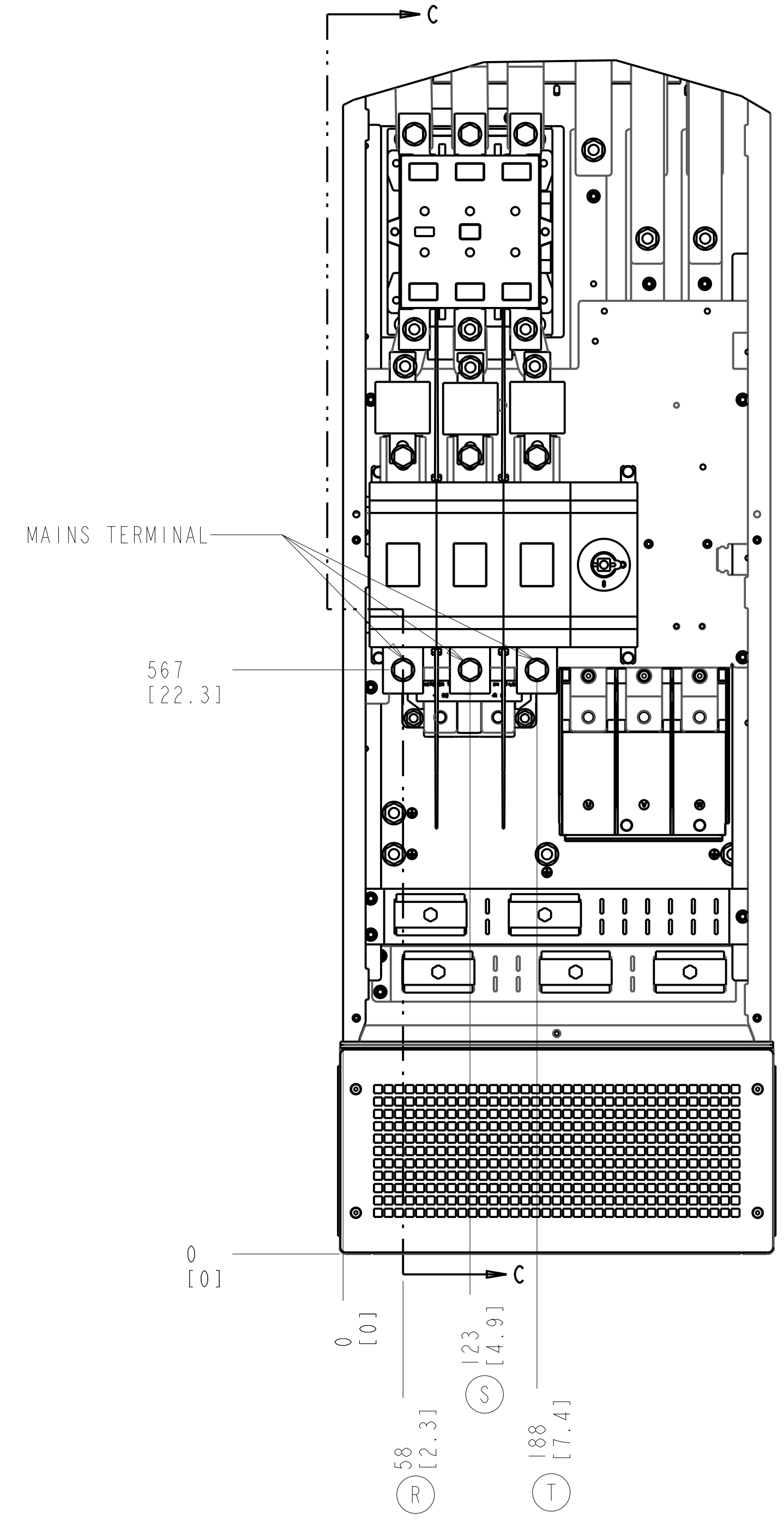
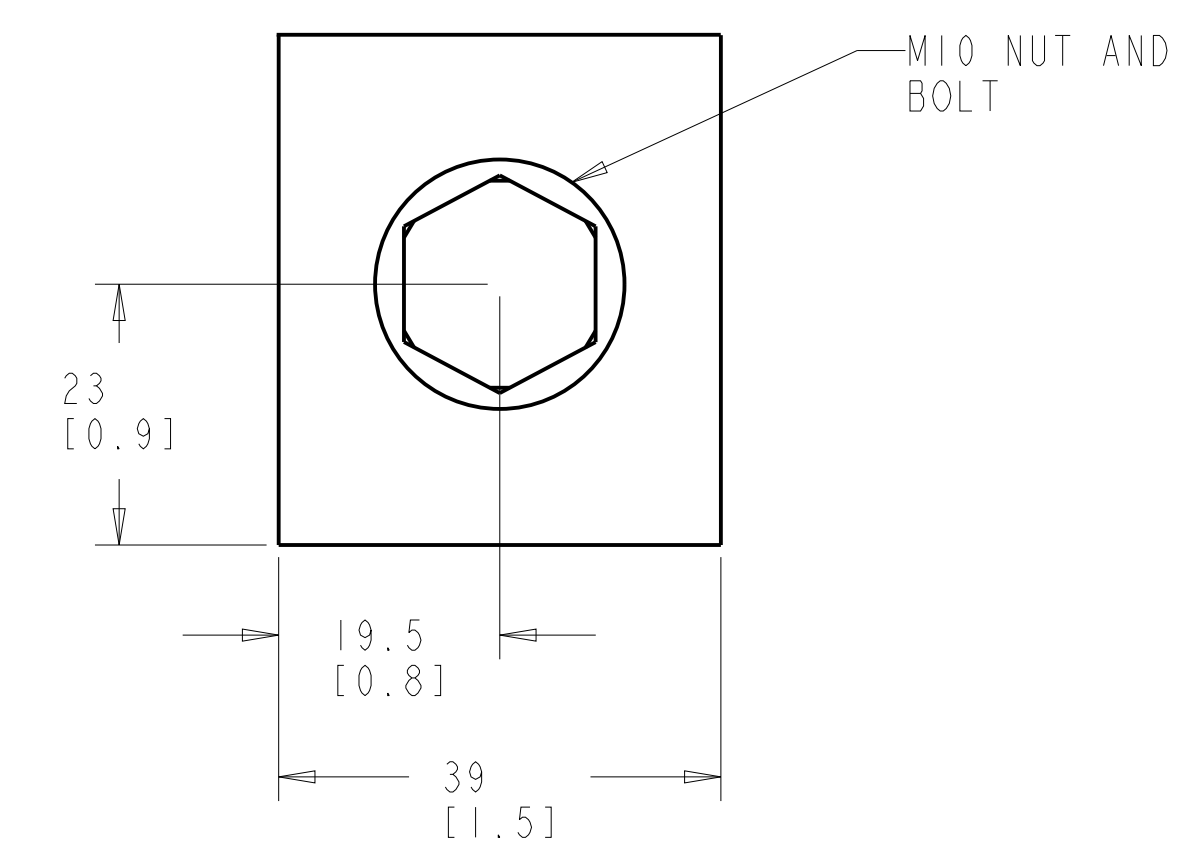
1. PLACE CABLES THROUGH MARKED AREAS
2. 185MM² (400 MCM) MAX WIRE SIZE

TITLE INSTALLATION DRAWING, D8H, IP21/54		
SIZE D	MODEL P454-1042	REV P1
SCALE 0.250	DRAWING NO. 177R0493	SHEET 2 OF 5

CONTACTOR AND DISCONNECT



MAINS TERMINAL

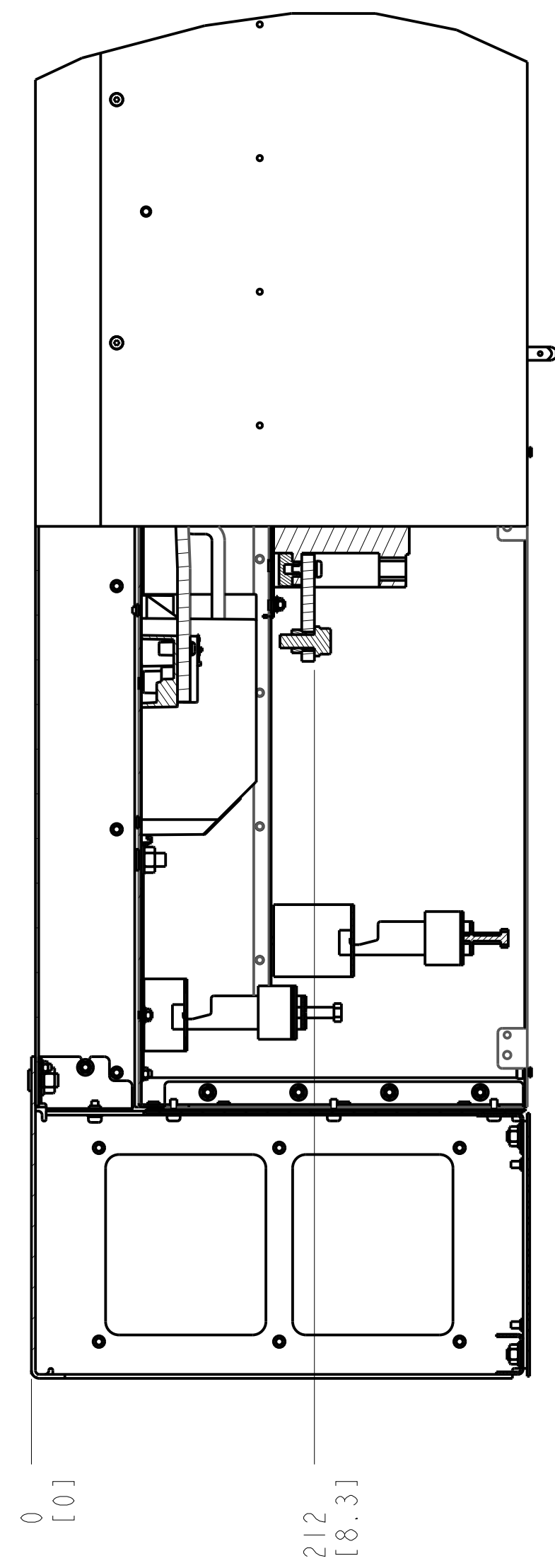
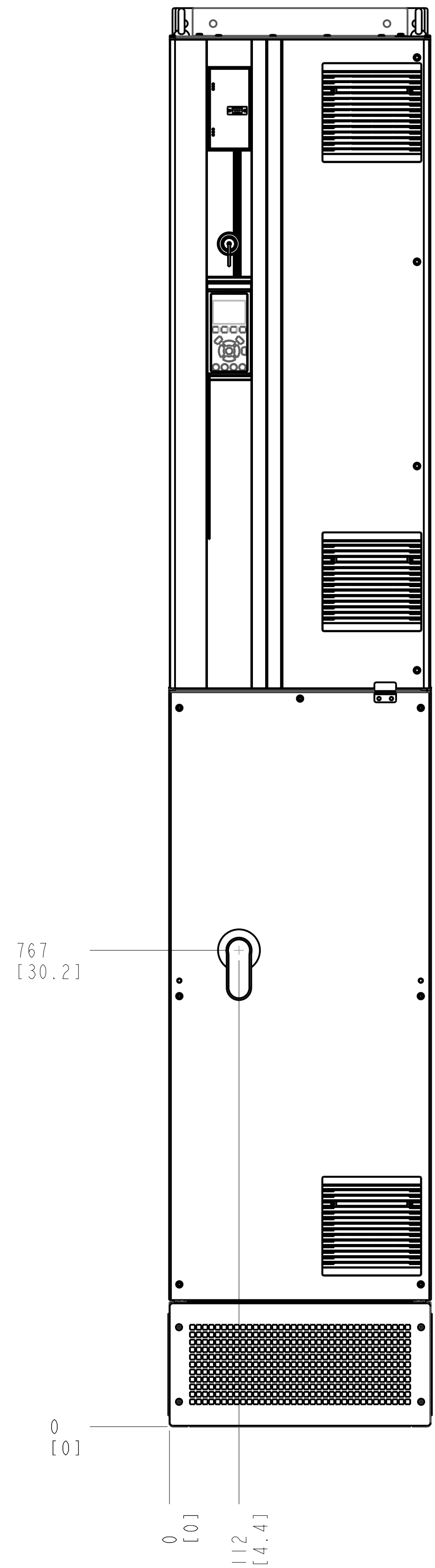


NOTES:
1. REFER SHEET 2 FOR BRAKE AND MOTOR TERMINAL DETAILS

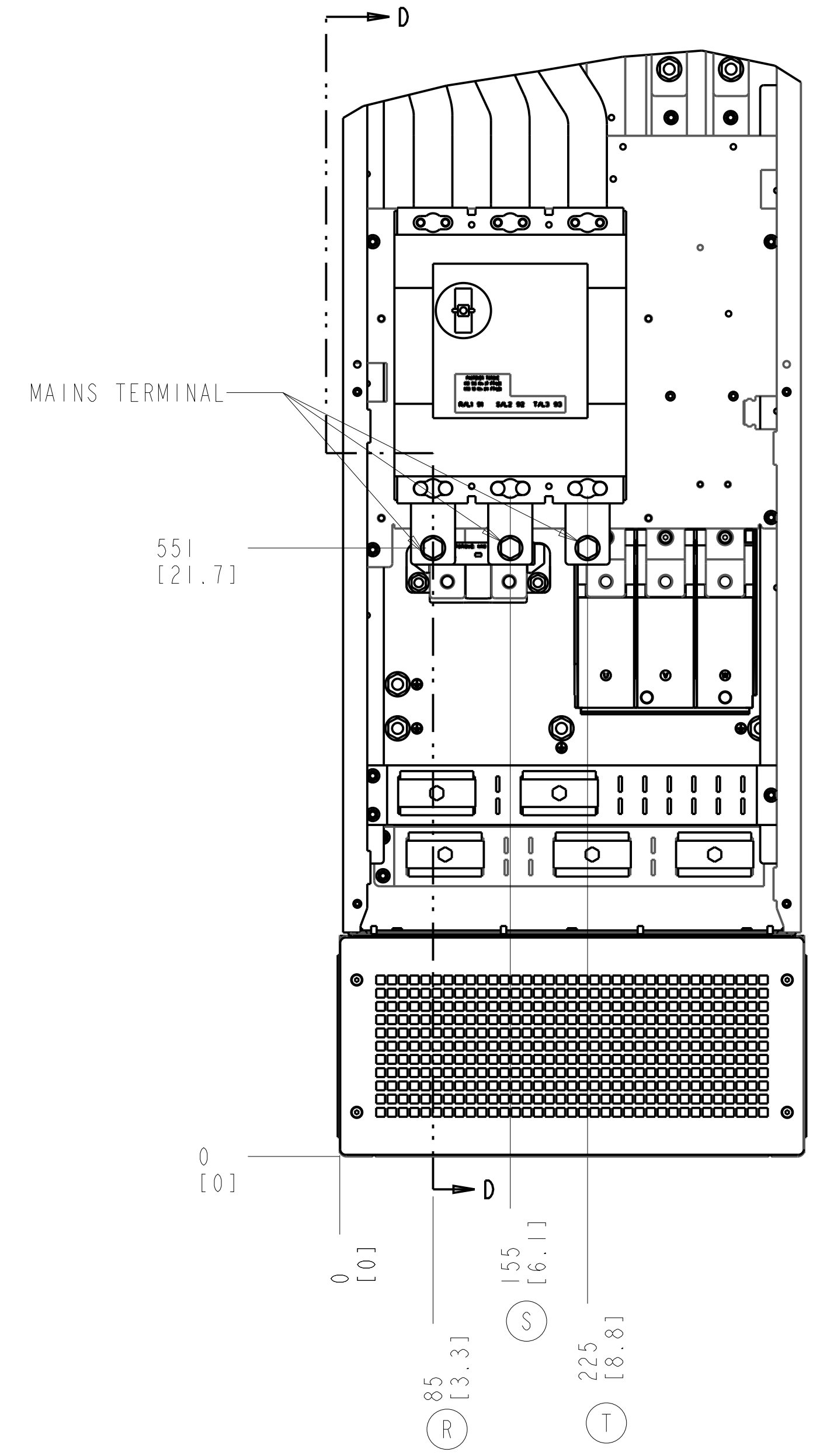
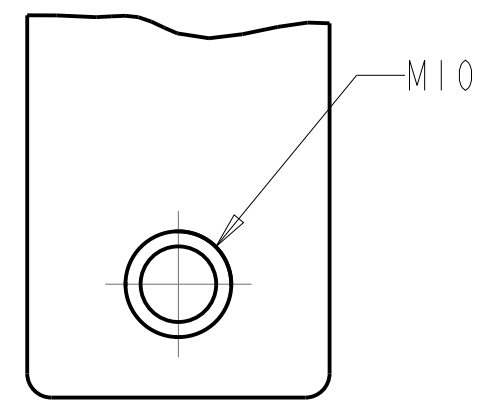
TITLE INSTALLATION DRAWING, D8H, IP21/54		
SIZE D	MODEL P454-1042	REV P1
SCALE 0.250	DRAWING NO. 177R0493	SHEET 3 OF 5

CIRCUIT BREAKER

SECTION D-D MAINS TERMINALS



MAINS TERMINAL
SCALE 1.000



NOTES:

- REFER SHEET 2 FOR BRAKE AND MOTOR TERMINAL DETAILS

TITLE			
INSTALLATION DRAWING, D8H, IP21/54			
SIZE	MODEL	REV	
D	P454-1042	P1	
SCALE	DRAWING NO.	SHEET	
0.250	177R0493	4 OF 5	

THE TABLES BELOW ARE USED TO DETERMINE THE FRAME SIZE FOR A GIVEN POWER AND VOLTAGE RATING, WITH A CIRCUIT BREAKER, CONTACTOR OR DISCONNECT + CONTACTOR.

1) IDENTIFY THE POWER IN NORMAL OVERLOAD (N.O.) OR HIGH OVERLOAD (H.O.), KILOWATTS (KW) OR HORSEPOWER (HP).

2) READ DOWN THE COLUMN TO THE ROW WITH THE CORRECT VOLTAGE TO IDENTIFY THE FRAME SIZE.

THIS DRAWING IS FOR D8H FRAMES,

THE TABLE BELOW CAN BE USED TO DETERMINE THE FRAME SIZE IF THE SPECIFIC MODEL/TYPE CODE WITH A CIRCUIT BREAKER, CONTACTOR OR DISCONNECT + CONTACTOR IS KNOWN.

KW RATED DRIVES						
KW HIGH OVERLOAD	132	160	200	250	315	315
KW NORMAL OVERLOAD	160	200	250	315	355	400
400V		D8H	D8H	D8H		
500V			D8H	D8H	D8H	
525V	D8H	D8H	D8H	D8H		
690V		D8H	D8H	D8H		D8H

HORSEPOWER RATED DRIVES					
HP HIGH OVERLOAD	200	250	300	350	350
HP NORMAL OVERLOAD	250	300	350	400	450
460V		D8H	D8H		D8H
575V	D8H	D8H	D8H	D8H	

PLATFORM	VOLTAGE	MODEL/TYPECODE	FRAME(IP21/IP54)
HVAC	T4	FC-102N200T4	D8H
		FC-102N250T4	
		FC-102N315T4	
	T7	FC-102N200T7	
		FC-102N250T7	
		FC-102N315T7	
AQUA	T4	FC-102N400T7	
		FC-202N200T4	
		FC-202N250T4	
	T7	FC-202N315T4	
		FC-202N200T7	
		FC-202N250T7	
AUTOMATION	T5	FC-202N315T7	
		FC-202N400T7	
		FC-302N160T5	
	T7	FC-302N200T5	
		FC-302N250T5	
		FC-302N160T7	
		FC-302N200T7	
		FC-302N250T7	
		FC-302N315T7	