

**WARNING!**  
 THE FOLLOWING TABLE LISTS THE PARAMETERS THAT ARE SET DIFFERENT FROM THE DRIVE DEFAULT SETTINGS. ADDITIONAL PARAMETER SETTINGS MAY BE REQUIRED FOR YOUR APPLICATION.

DRIVE PARAMETER SETTINGS

| PARAMETER # | NAME              | SETTING | VALUE                |
|-------------|-------------------|---------|----------------------|
| 0-02        | MOTOR SPEED UNIT  | 1       | HZ                   |
| 0-03        | REGIONAL SETTINGS | 1       | NORTH AMERICA        |
| 1-03        | TORQUE CHAR.      | 3       | AUTO ENERGY OPTIM VT |
| 5-02        | TERMINAL 29 TYPE  | 1       | OUTPUT               |
| 5-31        | TERMINAL 29       | 5       | RUNNING              |
| 14-20       | RESET MODE        | 13      | INFINITE AUTO REST   |

- NOTES:
- \* INDICATES COMPONENTS NOT SUPPLIED BY MANUFACTURER.
  - REFER TO THE INSTALLATION AND OPERATION MANUAL FOR DRIVE FUNCTIONS AND PARAMETER SETTINGS.
  - FEEDER CIRCUIT PROTECTION, INPUT POWER AND MOTOR WIRING MUST BE SELECTED IN ACCORDANCE WITH THE N.E.C., ANY APPLICATION LOCAL CODES AND THE LOAD CURRENT RATING.
  - REPLACE JUMPER 'J1' WITH NORMALLY CLOSED SAFETY INTERLOCK CONTACT AS NECESSARY. CONTACT MUST BE RATED 1/4 HP @ 120VAC MINIMUM.
  - PANEL MAY REQUIRE DERATING, CONSULT DRIVE MANUAL OR FACTORY FOR FOLLOWING CONDITIONS:
    - HIGHER SWITCHING FREQUENCY THAN DRIVE DEFAULT
    - HIGHER THAN PANEL LISTED AMBIENT TEMPERATURES
    - ELEVATION ABOVE 3300 FEET (1000 METERS)
    - LONG MOTOR LEAD LENGTHS

|     |         |       |   |     |   |        |      |  |
|-----|---------|-------|---|-----|---|--------|------|--|
| B   |         |       | -NOTICE-<br>THIS DRAWING IS PROPRIETARY AND SHALL NOT BE COPIED OR ITS CONTENTS DISCLOSED TO OUTSIDE PARTIES WITHOUT THE WRITTEN CONSENT OF THE TRANE COMPANY | DRN | NAME  |        |      | THE TRANE COMPANY<br>A DIVISION OF<br>AMERICAN STANDARD INC. |
| A   | SP10119 | 11/10 |   | DTM | NEMA 3R,600V,3C<br>,MAIN CB ,DRIVE FUSE<br>,3MB1,SINGLE MOTOR,1 FAN |        |      |  |
| DR  | SP10076 | 09/10 |   | APR | MODEL   | PAGE   | SIZE | 185B3216   |
| REV | ECN     | DATE  |   | DTM | TR200   | 1 OF 2 | A    |  |

WIRE COLOR SCHEME  
 BLACK - LINE VOLTAGE  
 RED - AC CONTROL  
 WHITE - AC GROUNDED  
 CIRCUIT CONDUCTOR  
 BLUE - DC CONTROL  
 GREEN - CHASSIS GROUND

TERMINAL IDENTIFICATION

☒ - DRIVE TERMINAL  
 ⊗ - CUSTOMER TERMINAL

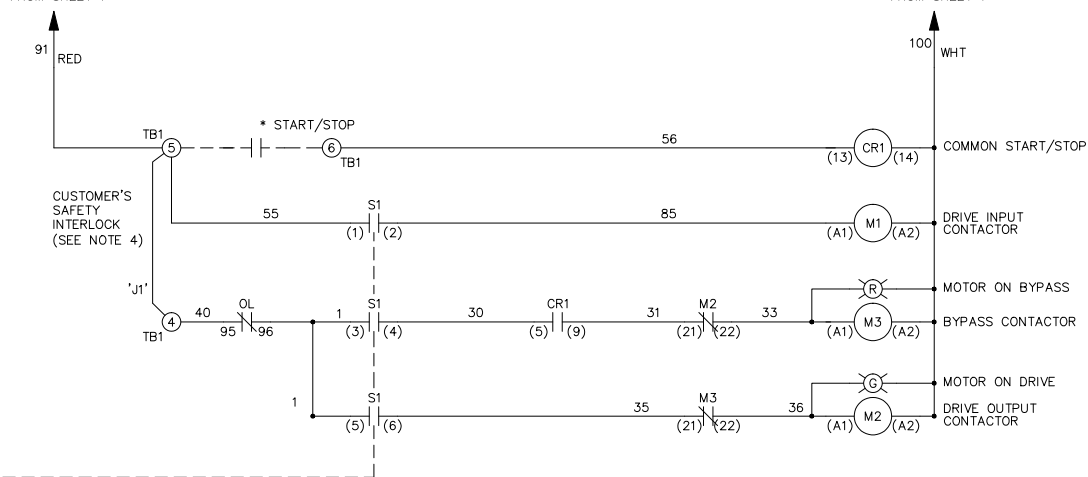
CUSTOMER DRY CONTACT RATINGS

| RELAY      | CONTACT RATING                  |
|------------|---------------------------------|
| CR1, CR6   | 5A @ 120VAC<br>1/10 HP @ 120VAC |
| M1, M2, M3 | 10A @ 120/240VAC                |

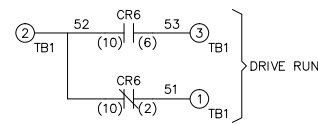
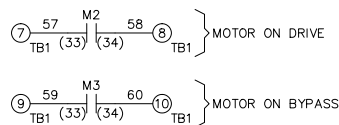
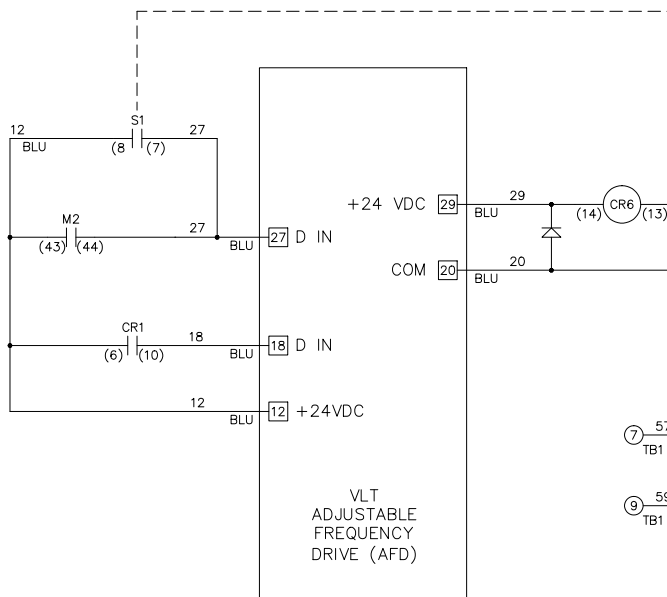
CONTACT SEQUENCE CHART FOR S1  
 X INDICATES CONTACT CLOSED

| CONTACT \ POSITION | DRIVE | OFF | BYPASS | TEST |
|--------------------|-------|-----|--------|------|
| 1-2                | X     |     |        | X    |
| 3-4                |       |     | X      | X    |
| 5-6                | X     |     |        |      |
| 7-8                |       |     |        | X    |

FROM SHEET 1



FROM SHEET 1



|     |         |       |
|-----|---------|-------|
| B   |         |       |
| A   | SP10119 | 11/10 |
| DR  | SP10076 | 09/10 |
| REV | ECN     | DATE  |

-NOTICE-  
 THIS DRAWING IS PROPRIETARY AND SHALL NOT BE COPIED OR ITS CONTENTS DISCLOSED TO OUTSIDE PARTIES WITHOUT THE WRITTEN CONSENT OF THE TRANE COMPANY

DRN DTM  
 APR DTM

NAME NEMA 3R,600V,3C  
 ,MAIN CB ,DRIVE FUSE  
 ,3MB1,SINGLE MOTOR,1 FAN  
 MODEL TR200  
 PAGE 2 OF 2  
 SIZE A  
 DWG NO. 185B3216

THE TRANE COMPANY  
 A DIVISION OF  
 AMERICAN STANDARD INC.