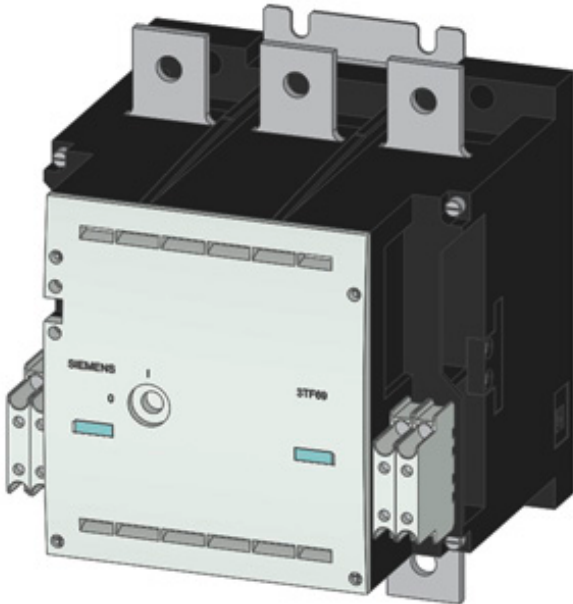


CONTACTOR SIZE 14, 3-POLE AC-3, 450KW, 400/380V (690V)
 AUXILIARY CONTACTS 44 (4NO+4NC) AC OPERATION AC 200
 TO 240V 50/60HZ



General technical data:

Size of contactor	14
Protection class IP on the front	IP00
Ambient temperature during operation	55 ... -25 °C
Equipment marking acc. to DIN 40719 extended according to IEC 204-2 acc. to IEC 750	K
Equipment marking acc. to DIN EN 61346-2	Q

Main circuit:

Number of poles for main current circuit	3
Operating current at AC-1 at 400 V	
• at ambient temperature 40 °C Rated value	910 A
Number of NC contacts for main contacts	0
Number of NO contacts for main contacts	3
Operating current at AC-3 at 400 V Rated value	820 A
Operating power	
• at AC-1 at 400 V Rated value	558 kW
• at AC-3 at 400 V Rated value	450 kW

Control circuit/ Control:

Control version of the switch operating mechanism	conventional
Type of voltage of the control supply voltage	AC
Control supply voltage frequency	
• 1 Rated value	50 Hz
• 2 Rated value	60 Hz
Control supply voltage	
• at AC	
— at 50 Hz	
— Rated value	200 ... 240 V
— at 60 Hz	
— Rated value	200 ... 240 V

Auxiliary circuit:

Number of NC contacts for auxiliary contacts	
• lagging switching	0
• instantaneous contact	4
Number of NO contacts for auxiliary contacts	
• leading contact	0
• instantaneous contact	4

Connections/ Terminals:

Type of electrical connection	
• for main current circuit	screw-type terminals
• for auxiliary and control current circuit	screw-type terminals
Identification number and letter for switching elements	44

Mechanical data:

Mounting type	screw fixing
Mounting type Side-by-side mounting	Yes
Width	230 mm
Height	295 mm
Depth	237 mm

Certificates/ approvals:

General Product Approval	Functional Safety/Safety of Machinery
--------------------------	---------------------------------------



[Baumusterbescheinigung](#)

Functional Safety/Safety of Machinery	Declaration of Conformity	Test Certificates	Shipping Approval
---------------------------------------	---------------------------	-------------------	-------------------

[Baumusterprüfbescheinigung](#)



[Typprüfbescheinigung/Werkszeugnis](#)

[spezielle Prüfbescheinigung](#)



Shipping Approval	other
-------------------	-------



[sonstig](#)

[Umweltbestätigung](#)

Further information

Information- and Downloadcenter (Catalogs, Brochures,...)

<http://www.siemens.com/industrial-controls/catalogs>

Industry Mall (Online ordering system)

<http://www.siemens.com/industrymall>

Cax online generator

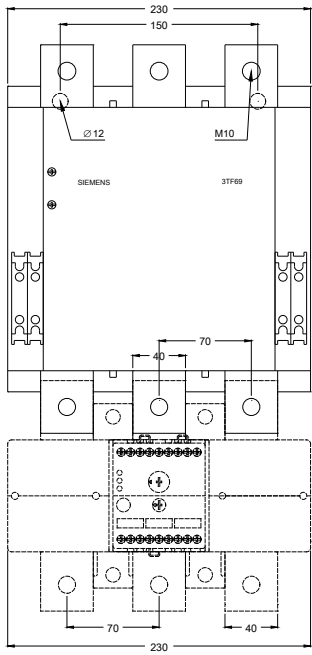
<http://support.automation.siemens.com/WW/CAXorder/default.aspx?lang=en&mfb=3TF69440CM7>

Service&Support (Manuals, Certificates, Characteristics, FAQs,...)

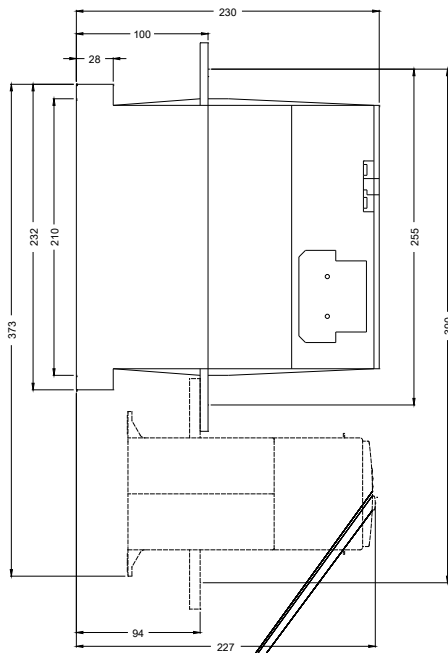
<https://support.industry.siemens.com/cs/ww/en/ps/3TF69440CM7>

Image database (product images, 2D dimension drawings, 3D models, device circuit diagrams, EPLAN macros, ...)

http://www.automation.siemens.com/bilddb/cax_de.aspx?mfb=3TF69440CM7&lang=en



last modified:



17.07.2015