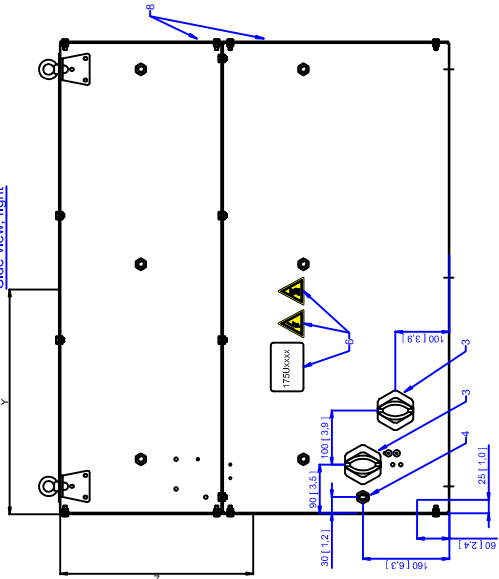
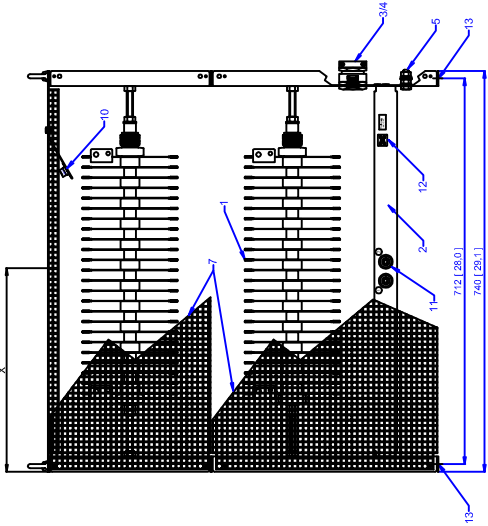


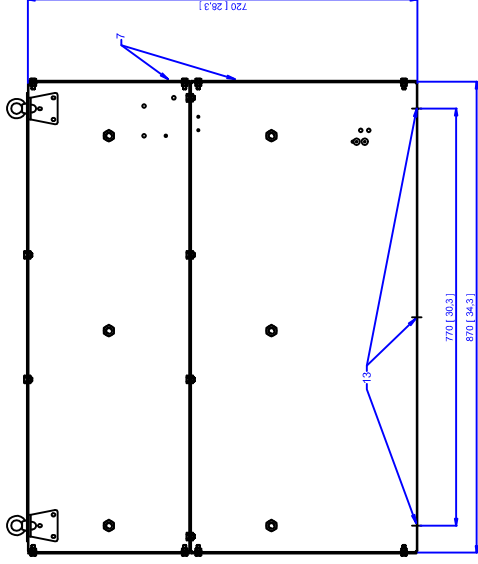
Side view, right



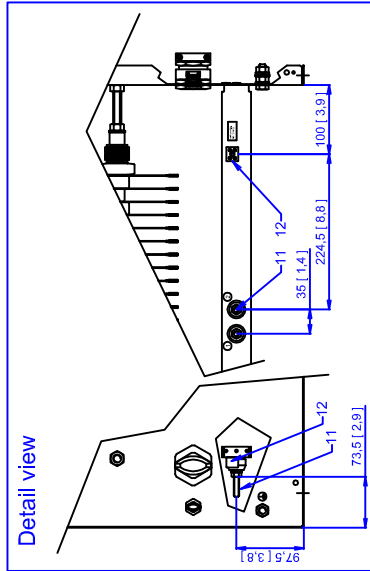
Front view



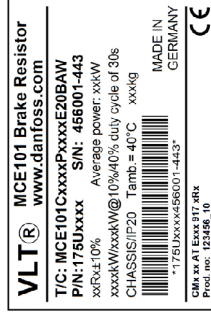
Side view, left



Detail view



Name Plate



DECLARATION

1. Resistor
2. Terminal board, see Detail view
3. Cable gland for load cables
4. Cable gland M16 thermo contact cable
5. Earthing bolt M10
6. Name plate / Warning signs
7. Front cover IP20
8. Rear cover IP20
9. Top cover IP20
10. Thermocontact 260 °C (NC)
11. Load connection, 2x bolt M8
12. Auxiliary connection for thermo contact, porcelain clamp 2.5"
13. 6x fixing hole Ø 9mm

CABINET TYPE: CMD27

Danfoss code	Typecode	Ohm	cable gland type for load cables (3)	Weight [kg]	Center of mass [mm]		
					X	Y	Z
175U3094	MCE101C1R60P52K0E20BAW	1,6	2x M50	90	370	440	355
175U3095	MCE101C1R40P60K0E20BAW	1,4	2x M50	90	370	440	355
175U3215	MCE101C7R40P52K0E20BAW	7,4	M40	90	370	440	355
175U3218	MCE101C6R10P60K0E20BAW	6,1	M50	90	370	440	355
175U3223	MCE101C3R70P52K0E20BAW	3,7	M50	90	370	440	355
175U3225	MCE101C3R30P60K0E20BAW	3,3	2x M25	90	370	440	355



MCE101 Brake resistor
xxR±10% IP20
175C0626

Material: Cabinet material
Zinc plated steel, without coating.
Path:

Weight (g)	-	Date	14.03.2012	Creator:	F. Bülle H. Hansen	Approved:	H. Hansen	Scale	1:1
Tolerance:				File:	917CMD27_02.dwg				
No.:	02	Last Revision:	13/637	Rev Date:	11.12.2013	By:	F. Bülle	Paper size:	A3

Drawing No.: **917CMD27**
Sheet: 1 of 1

