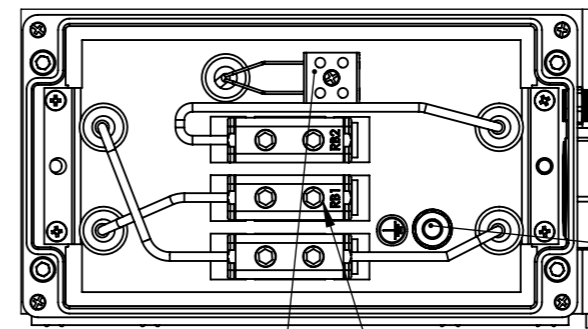


Connection box:



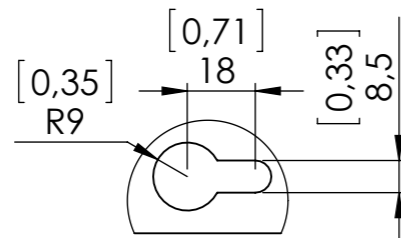
For temperature switch cable:
Clamping range: 3.5 - 7.0 mm (0.14 - 0.28 in)
Size Wrench (SW): 16 mm (0.63 in)

For resistor cable:
Cable gland with internal connection for braid
Clamping range: 19 - 28 mm (0.74 - 1.1 in)
Size Wrench (SW): 45mm (1.78)

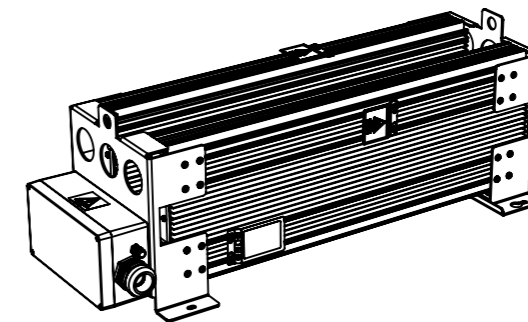
PE: M8
Torque 4.5 - 5.5 Nm (39.83-48.68 lb-in)

Thermo switch connection:
Marked: T1/T2
IEC: 0, 2-4 mm² / 500V
UL: AWG 24 -12 / 300V
Wire stripping: 8 mm (0.31 in)
Torque: 0.7 Nm (6.2 lb-in)

Resistor connection:
Marked RB1 / RB2
IEC: Cu 2.5- 50mm²; Al:6-50mm²/ 750V
UL: AWG 6 - 1/0 / 600V
Wire stripping: 23mm (0.9 in)
Torque: 10 Nm (88.51 lb-in)



DETAIL A
SCALE 1 : 2



Name plate:
VLT® MCE101 Brake Resistor
www.danfoss.com

T/C: MCE101xxxxPxxxxE65TAW
P/N: 175Uxxxx S/N: 456001-443
xxxR±10% Average power: xxxW
xxxxV/xxxxW@ 10%/40% duty cycle of 30s
IP65 Tamb = 40°C xxkg



Danfoss code	Typecode	Ohm	L±2 mm	L±0.08 in	L1±2 mm	L1±0.04 in	Weight kg	Center of mass mm		
								X	Y	Z
175U3135	MCE101A105RP4K20E65TAW	105	660	25.95	630	24.80	30	287	151	125

Danfoss A/S Power Electronics Division Ulsnæs 1, 6300 Graasten Denmark	Weight (g)	Date	Creator:	Approved:	Scale
	-	18.03.2015	HEE		1:5
MCE 101 Brake Resistor xxR ± 10% 929 IP 65 175C0638	Tolerance:	DS/ISO 2768-cL	File:	929CBT-VxxxBGHT2	
	No.:	Last Revision:	Rev Date:	By:	Paper size:
Any amendment must be confirmed by DANOTHERM ELECTRIC A/S					A3
Material:	Drawing No.:			Sheet:	
Path: T:\sw\kute\KUTETEGN\	929CBT-VxxxBGHT2			1 of 1	
This drawing is the property of DANOTHERM ELECTRIC A/S and must not be copied without their consent.					