

Fact sheet | Remote LCP holder

Remote LCP – easily operate and program your drive at a distance



Easy access no matter the location

AC drives are often mounted in places with limited access: inside a panel or a machine, just under the roof or in a cellar. But with the Remote LCP holder, you can easily access your drives no matter where they are located.

The Remote LCP holder is designed for outdoor installations and is ideal for many applications, for instance roof top units (RTU) or in water pump applications where the drive and pump are mounted in an underground chamber and the Remote LCP holder above ground.

Full overview of your drive

The solution is designed with user-friendliness at its core. Open the cover for full access to the LCP and get optimal readability even in heavy sunlight. The closed cover ensures proper protection of the LCP and visibility to warning and fault notifications from the LED lights. Use a padlock with the Remote LCP holder cover to ensure that only authorized persons read out and operate the drive.

Designed for insulated air-handling units

The Remote LCP holder is specifically engineered for insulated air-handling units (AHUs) and RTUs, as the wall tap fits with the standard wall insulation of an AHU including accessories to seal the solution.

Easy installation

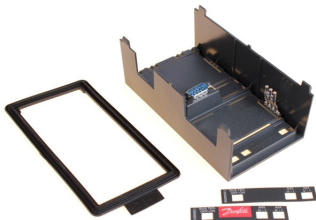
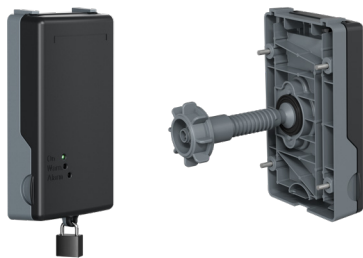
Easily install the Remote LCP holder including drive adapter and interconnection cable, as all parts are prepared for installation. Simply drill a hole for the wall tap and fasten the Remote LCP holder using screws. Remove the LCP from the drive and mount it onto the LCP holder. Join the interconnection cable with its pre-assembled M12 connectors.

The Remote LCP holder can also be used with a wireless LCP, thereby improving the wireless transmission.

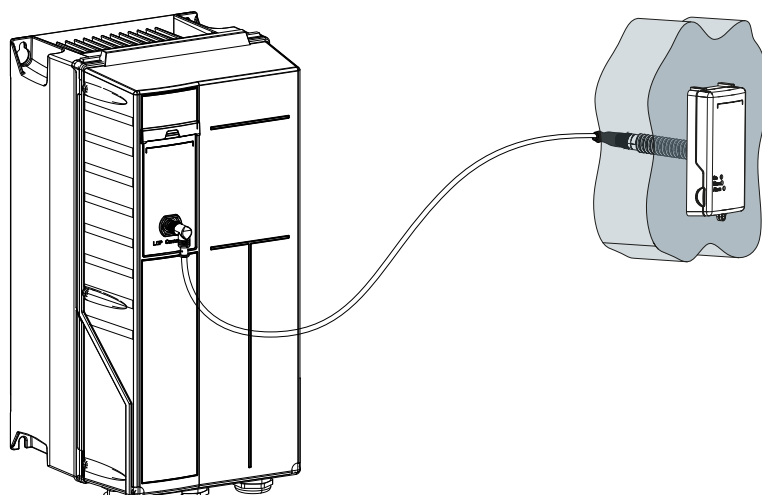
EASY
LCP access no matter the location

Features	Benefits
Remote mounting kit	<ul style="list-style-type: none"> Position of LCP to optimize usability of the user interface. Position of wireless LCP to optimize wireless connection. Place the drive inside an air-handling unit or control panel to protect the drive, or in areas with limited access.
LCP cover with padlock hole	<ul style="list-style-type: none"> LCP protection against heavy weather conditions. The cover aids readability in sunlight. Protection against unauthorized operation of the drive, monitoring operation values and changing of parameters.
Built for outdoor applications	<ul style="list-style-type: none"> High IP rating and materials suited for outdoor applications. Drive adapter with gasket to retain the IP rating of the drive. No corrosion risk as the LCP holder has no metal parts.
Wall tap with gasket & nut	<ul style="list-style-type: none"> Especially for air-handling units with insulated walls, where the gasket prevents air leakage or moisture to enter the AHU.
Cost-competitive solution	<ul style="list-style-type: none"> Easy installation with pre-assembled interconnection cable and reuse of LCP from the drive. Material selection for a cost-competitive solution that fits outdoor applications.

Specifications



Ordering number	<ul style="list-style-type: none"> 134B5223 – Kit with 3 m/10 feet cable 134B5224 – Kit with 5 m/16 feet cable 134B5225 – Kit with 10 m/33 feet cable
Compatibility	<ul style="list-style-type: none"> VLT® HVAC Drive FC 102 VLT® Refrigeration Drive FC 103 VLT® AQUA Drive FC 202 VLT® Automation Drive FC 301/FC 302 VLT® Lift Drive LD 302
Package includes	<ul style="list-style-type: none"> LCP holder with D-sub connector for the LCP and a wall tap with M12 male connector for interconnection cable. LCP cover protecting the LCP or wireless transmitter against sunlight etc. Drive interface adapter, for interconnection cable and IP gasket to obtain the approved IP rating. IP66 interconnection cable with M12 connectors. A mounting nut and gasket to shield the baseplate holder to the wall. Disassembly tool to remove front cover. LCP or wireless transmitter is not included but is to be moved from the drive to the remote holder.
LCP protection cover	<ul style="list-style-type: none"> Notifications from LED lights indicating if the drive is on, or if there are warnings or alarms – visible at a 45° angle. 5 mm / 0.039 inch padlock hole. Color: Black & light grey Plastic material.
Interconnection cable	<ul style="list-style-type: none"> Two M12 connectors, a 90° male connector for the drive adapter and a straight female connector at the cradle.
Special adapter	<ul style="list-style-type: none"> IP55/66 drives delivered without LCP mounted from factory need a special cradle adaptor to attach the LCP or wireless LCP to the drive – spare part no 130B0264.
Holder dimensions	<p>Front cover</p> <ul style="list-style-type: none"> Size (length*width*height). 164.5*95.5*38 mm / 6.5*3.8*1.5 inches. Padlock adds 8 mm / 0.3 inch to the height. <p>Wall tap</p> <ul style="list-style-type: none"> Size 104 mm & 18 mm / 4.1 inches & 0.71 inch (length & diameter).
Wall-mounting connection	<ul style="list-style-type: none"> Wall thickness of 0-90 mm (0-3.55 inches). Uses the air seal of the nut. A 24 mm / 0.95-inch hole for the connection tap. 4*4 mm screws for securing the baseplate mounting (not included). Nut to secure a tight seal to the connection tap.
Environment	
Enclosure rating	IP54 of the LCP holder and IP20/21/54/55/66 for the drive adapter, IP66 for the interconnection cable.
Temperature range	-25 to +50 °C
Approvals	
Vibration	EN50178 & IEC721-3-3 class 3M3
General	IEC/EN61800-2



Any information, including, but not limited to information on selection of product, its application or use, product design, weight, dimensions, capacity or any other technical data in product manuals, catalogues descriptions, advertisements, etc. and whether made available in writing, orally, electronically, online or via download, shall be considered informative, and is only binding if and to the extent, explicit reference is made in a quotation or order confirmation. Danfoss cannot accept any responsibility for possible errors in catalogues, brochures, videos and other material. Danfoss reserves the right to alter its products without notice. This also applies to products ordered but not delivered provided that such alterations can be made without changes to form, fit or function of the product. All trademarks in this material are property of Danfoss A/S or Danfoss group companies. Danfoss and the Danfoss logo are trademarks of Danfoss A/S. All rights reserved.