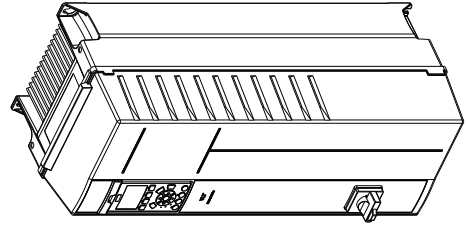
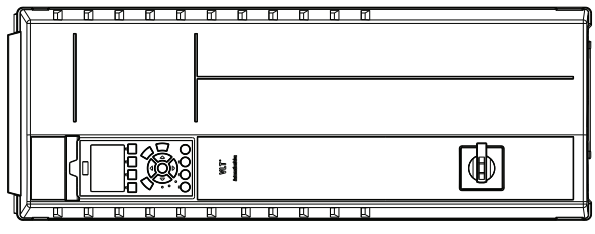
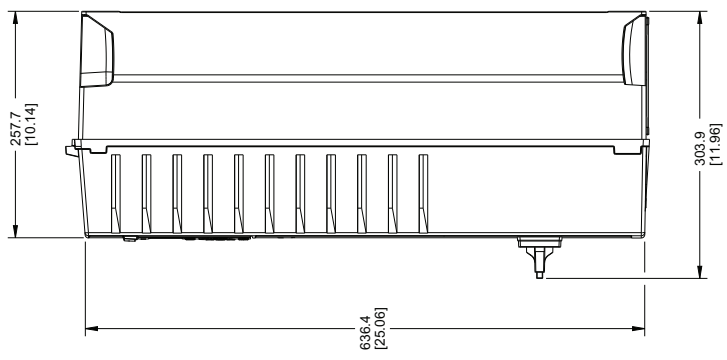
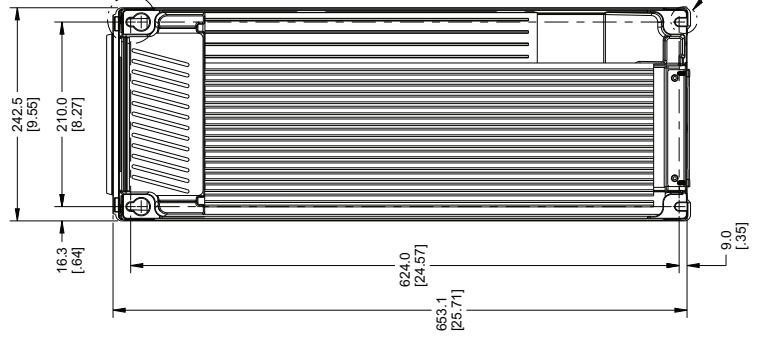
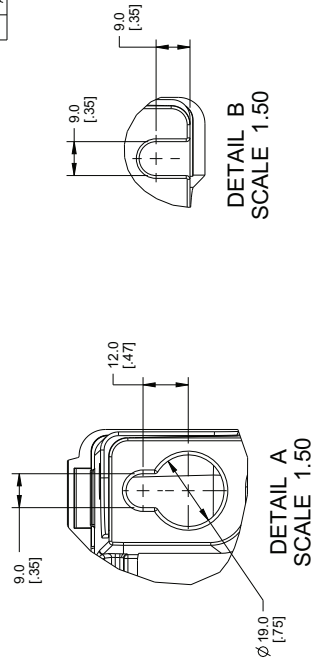


ZONE	REV	BY	DATE	DESCRIPTION
A	1	J. MEHAFFEY	2008NOV03	ORIGINAL RELEASE

- NOTES :**
- FOR PROPER COOLING, REAR OF DRIVE MUST BE MOUNTED ON A SOLID, FLAT SURFACE.
 - DRIVE DOES NOT REQUIRE SIDE-BY-SIDE FREE AIR SPACE. 200 MM (8 INCHES) OF FREE AIR SPACE REQUIRED AT TOP AND BOTTOM OF DRIVE.
 - DRIVE MUST BE INSTALLED WITHIN 15.25 METERS (50 FEET) OF COMPRESSOR WITH UNSHIELDED MOTOR CABLES OR WITHIN 15.25 METERS (50 FEET) OF COMPRESSOR WITH SHIELDED CABLES.
 - DRIVE MUST HAVE SEMICONDUCTOR FAST BLOW FUSES (SEE INSTRUCTION MANUAL).
 - PRESSURE TRANSDUCER SHOULD BE MOUNTED AT COMPRESSOR DISCHARGE
 - PRESSURE TRANSDUCER MUST BE MOUNTED WITHIN 150 METERS (492 FEET) OF DRIVE.
 - SEE OPERATOR'S MANUAL FOR DRIVE CONTROLLER AND AC POWER TERMINAL LOCATIONS.
 - RATED ALTITUDE: 1000 METERS (3281 FEET)
 - MAX CONTINUOUS TEMPERATURE: 46°C (115°F)
 - UL, cUL, AND CE APPROVED.
 - ESTIMATED SHIPPING WEIGHT: 28 KG (62 LBS.)
 - THIS DRAWING IS APPLICABLE FOR THE FOLLOWING NEMA 1 AND NEMA 12 DRIVES, WITH FUSED DISCONNECT, WITH AND WITHOUT RFI:
 380-500 VAC MODELS: IRV302P18KT5E21 - IRV302P18KT5E55
 200-240 VAC MODELS: IRV302P11KT2E21 - IRV302P11KT2E55
 - ALL DIMENSIONS ARE IN MM WITH INCHES IN PARENTHESIS.



SCALE 0.250
THIS VIEW IS SHOWN FOR REFERENCE ONLY

		DRIVE, VF IRV302 SERIES GENERAL ARRANGEMENT	
THIRD ANGLE PROJECTION 	DRAWN BY P. LOYARALU	DATE 2008NOV03	TITLE DRIVE, VF IRV302 SERIES GENERAL ARRANGEMENT
CHECKED BY J. MEHAFFEY	APPROVED BY J. MEHAFFEY	DATE 2008NOV03	SHEET 23552789
DO NOT SCALE DRAWING DRAWING IS SUBJECT TO U.S. EXPORT ADMINISTRATION REGULATIONS AND OTHER APPLICABLE GOVERNMENT RESTRICTIONS OR REGULATIONS. THIS DRAWING CONTAINS PROPRIETARY NOTICE INFORMATION IS THE PROPERTY OF INGERSOLL-RAND CO. AND IS UNCLASSIFIED AND UNCONTROLLED UNLESS INDICATED OTHERWISE. UNLESS OTHERWISE SPECIFIED: - REMOVE ALL BURRS AND SHARP CORNERS - DIMENSIONS ARE TO BE TAKEN IN ACCORDANCE WITH ANSIS/ASME A2.4 COPYRIGHT © 2009 INGERSOLL-RAND COMPANY ALL RIGHTS RESERVED			SEE NOTES A1
STANDARD TOLERANCES: ALL DIMENSIONS ARE IN INCHES (IF SHOWN) UNLESS OTHERWISE SPECIFIED: HOLE : ± .01 ONE PLACE (X) : ± 0.5 TWO PLACE (XX) : ± 0.25 ANGLES (A) : ± 1°			0.35" UNIT VIPER