


# KIT END BELL INSULATION COVER

100147

 <p><b>Installation and servicing of Danfoss Turbocor® compressors by qualified and product trained personnel only. Follow these instructions and sound refrigeration/electrical/servicing practices relating to installation, commissioning, maintenance and service.</b></p>			
<p>Consult the appropriate DTC Service Manual on <a href="http://turbocor.danfoss.com">turbocor.danfoss.com</a> for detailed service instructions.</p>	<p><b>Never power compressor without covers in place and secured.</b></p> <p><b>Removing the mains input cover will expose you to a voltage hazard of up to 575V. Ensure the mains input power is off and locked out before removing cover.</b></p> <p><b>Before removing top cover, wait at least 20 minutes after isolating AC power to allow the high voltage capacitors to discharge.</b></p>	<p>Always wear appropriately rated safety equipment when working around equipment and/or components energized with high voltage.</p> <p><b>This equipment contains hazardous voltages that can cause serious injury or death.</b></p>	<p><b>Recover all refrigerant from compressor in accordance with local codes and ensure pressure is fully vented before the removal of refrigerant containing components.</b></p>

1 - Introduction:

END BELL INSULATION COVER Installation Instructions.

2 - Tools Needed:

1. ADHESIVE - SILICONE ADEHEM



2. CAULKING PISTOL



3 - Installation Instructions:

3. Take off the rear eye bolt from the compressor and place a piece of paper to prevent silicon sealant from entering in to the eye bolt's hole on the end bell.

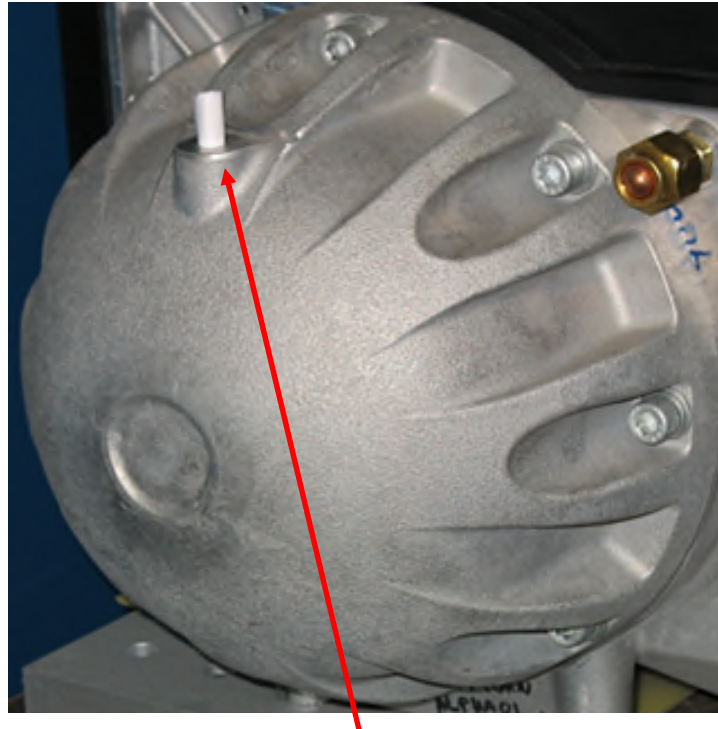


Figure 1 End Bell Eye Bolt

4. Place the silicone sealant on a caulking pistol (tool A). Place the silicone on the end bell insulator, the inner face, and near the border.



Figure 2 Silicone Sealant

5. Be sure to have placed enough silicone to guarantee a perfect seal. 1/4 inches of silicone should be enough.
6. Cover the inside of the hole for the eyebolt with silicone.



Figure 3 Silicone Sealant Inside Eyebolt

7. If your compressor doesn't have the Schrader valve or the Schrader valve is located at the bottom of the end bell, you must cover the lower hole with silicon sealer. (See the following figures)



Figure 4

8. If the Schrader valve is located at the bottom of the end bell (Figure 5), you should block the second hole and cut the tiny edge of the insulator in order to be able to mount it on the end bell so cut the removable tab of the insulator in order to be able to mount it on the end bell.



Figure 5

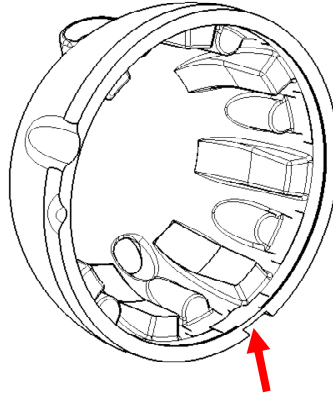


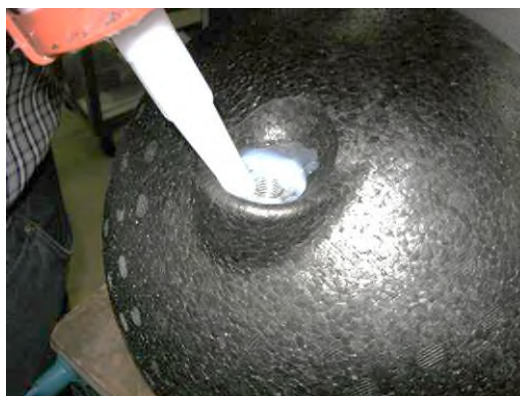
Figure 6 Cut away removable tab

9. Insert the end bell on the rear of the compressor. Be sure to have aligned the position of the eyebolt of the end of the compressor.



Figure 7


10. Place more silicone around the hole for the eye bolt to guarantee the seal then replace the eyebolt.



11. Don't put silicone in the hole off the eyebolt.
12. Place Eyebolt and clean up extra silicon sealant from the around of the End bell insulator.

4 - Kit Contents

Kit numbers	Compressor models
100147	ALL TT MODELS & TG310

QTY	Part(s) Description	Picture(s)
1	INSULATION COVER - END BELL - STYRENE FOAM	

Danfoss can accept no responsibility for possible errors in catalogues, brochures and other printed material. Danfoss reserves the right to alter its products without notice. This also applies to products already on order provided that such alterations can be made without subsequential changes being necessary in specifications already agreed. All trademarks in this material are property of the respective companies. Danfoss and the Danfoss logotype are trademarks of Danfoss A/S. All rights reserved.