

Compact Inverter Tester User Manual

Danfoss Turbocor® TT & TG Series Centrifugal Compressors



Proprietary Notice

This publication contains information proprietary and confidential to Danfoss Turbocor Compressors Inc. (DTC). Any reproduction, disclosure or unauthorized use of this publication is expressly prohibited without written approval from DTC.

DTC reserves the right to make changes without notice in product or component design as warranted by evolution in user needs or advancements in engineering or manufacturing technology.

DTC has exercised its best efforts to ensure that the information contained in this manual is correct. However, no warranty of reliability or accuracy is given with respect to the information, and DTC shall not be responsible or liable for the correctness or

suitability of the information or for any error or omission. If you encounter any difficulty in using this manual, please forward your query to DTC or its authorized sales agent.

All brand names and product names used in this manual are trademarks, registered trademarks, or trade names of their respective holders.

Danfoss Turbocor Compressors Inc.
1769 East Paul Dirac Drive Tallahassee,
Florida 32310
USA
Phone 1-850-504-4800
Fax 1-850-575-2126
<http://turbocor.danfoss.com>

Encounter an error or see opportunity for improvements while reading this manual? Email us at turbocor.contact@danfoss.com with a brief description.

* Subject to change without notice.

* Danfoss Turbocor is committed to customer satisfaction by following its Continuous Product Improvement Policy.

Compact Inverter Tester Overview

1.1 Overview

This manual serves as a general guideline for the end user of the Danfoss Turbocor® compressor products. It is the responsibility of the user of this tester to adhere to the instructions within this manual to avoid damage to persons or property. Danfoss Turbocor Compressors is not liable for any damages that occur from misuse of the Compact Inverter tester.

... DANGER ...

Only personnel familiar with power electronics systems should use this unit when it is operating. Only personnel who are qualified and thoroughly familiar with this User Manual should operate the unit. The inverter should not be installed or tested without a full understanding of the information contained herein.

1.2 Purpose

The purpose of the tester is to verify switching functionality of the Inverter on Danfoss Turbocor® TT/ TG compressors. The tester provides all power necessary to interface with the inverter module during testing. Due to the limitation of the tester, only static tests can be performed. This device will test the high voltage section, both top and bottom diodes of each section, and the driver board of the inverter. No testing should be performed with the compressor itself powered on.

1.3 Application

The purpose of a power converter is to produce a controllable voltage, frequency, and provide an A/C output waveform from a D/C link circuit. This D/C link is often supplied by a controllable or uncontrollable AC/DC converter.

The Insulated Gate Bipolar Transistors (IGBTs) are semiconductor switches used to control the torque (flux) and speed of the permanent magnet motor used on all Danfoss Turbocor® compressors. Speed and torque of the motor are precisely controlled by the Bearing Motor and Compressor Controller (BMCC) when a demand is given.

Inverter model types are used to operate various compressor models over a wide range of network voltages, currents, and capacities:

- SKiiP 292 & SKiiP 342 are used on Major Revision "F" and earlier TT300 compressors
- SKiiP 613 is used on Major Revision "G" TT300 compressors
- SKiiP 513 & SKiiP 613 are used on all TT350, TT400, TT500, & TT700 compressors

Compact Inverter Tester Diagram

2.1 Compact Inverter Tester Diagram

Figure 2-1 shows the face of the Inverter Tester. Refer to Table 2-1 for component descriptions.

Figure 2-1 - Compact Inverter Tester Diagram

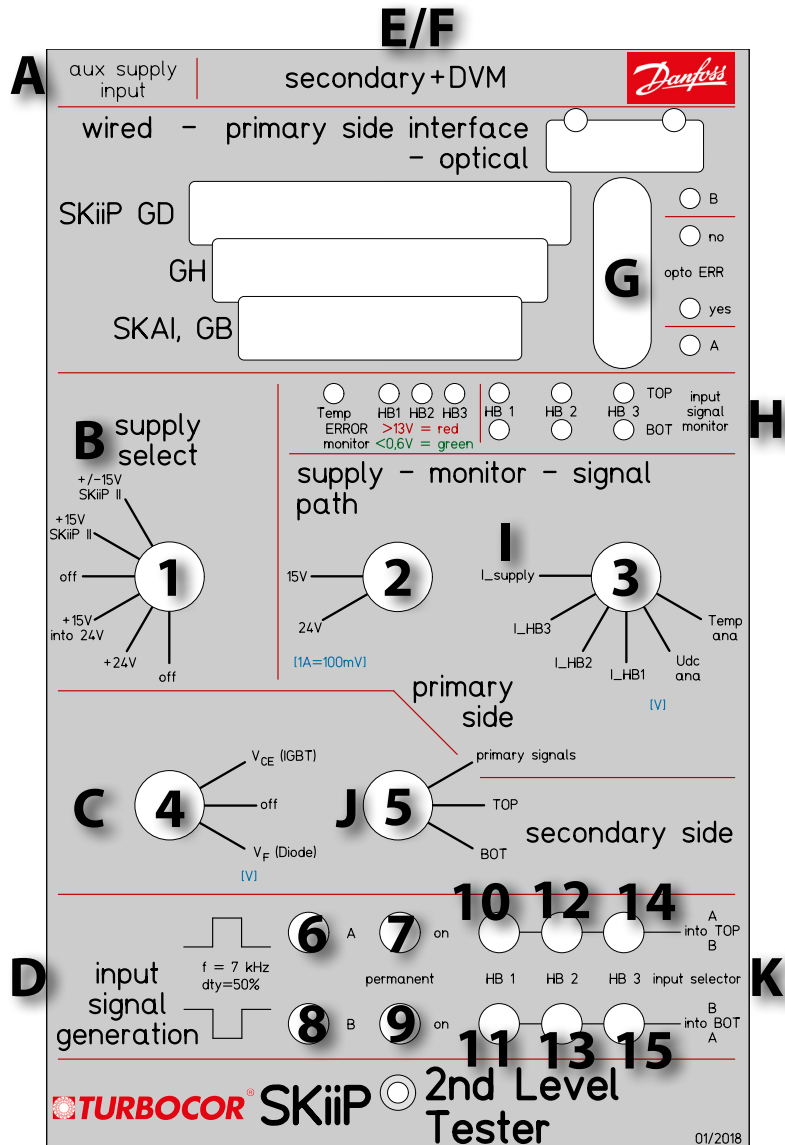


Table 2-1 - Diagram Description

Letter	Description
A	Supply input for auxiliary power supply 24 VDC
B	Selector for SKiiP supply
C	Selector for VCE (IGBT) - VF (Diode) measurement
D	PWM signal generator, ≈ 7 kHz or permanent (CW) signal
E	Interface for SKiiP secondary side power terminals
F	Connector for external DVM
G	Primary side SKiiP interface GB/GH/GD, wired or optical
H	Digital I/O status PWM SKiiP input signals
I	Selector for monitoring analog primary side SKiiP signals
J	Selector monitoring primary / secondary signal monitoring
K	PWM signal matrix 2 PWM into 6 SKiiP inputs

Inverter SKiiP Tester Instructions

3.1 Instructions

1. Isolate power from the compressor in accordance with industry standards.
2. Wait 20 mins for the DC capacitors to dissipate all power.
3. Remove the top covers from the compressor.
4. Remove the Soft Start and isolate the Inverter by removing the snubber capacitors, DC link capacitors, and the motor bus bars.
5. Unplug the communication cable from the Inverter.
6. Set the SKiiP Tester Supply Select knob **[1]** in the **off** position.
7. Plug the supplied ribbon cable to the Inverter and into the **Tester** at the **SKiiP GD** connection.
8. Attach the **SKiiP AC** and **SKiiP DC +/-** test cables to section 1 of the Inverter.
 - a. Alignment of the cable PCBs is identified.
9. Plug the Digital Volt Meter (**DVM**) test cable into a good quality auto ranging voltage meter.
 - a. Match the + and – of the cable PCB to the + and – on the meter.
10. Knob **(2)** should always be in the **24V** position.
11. Knob **(3)** should always be in the **I supply** position.
12. Knob **(4)** starts in the **off** position.
13. Switches **10-15** must always be in the **UP** position.
14. Set the **DVM** to **DC voltage** measurement.
15. Plug the **24V power supply** cable into the back of the **Tester**.
16. Turn knob **(5)** to **TOP** position.
17. To test the **Primary VDC side** of the SKiiP, turn knob **(1)** to the **+24V** position
18. To test the **Voltage Drop-Off State**, turn knob **(4)** to **VCE (IGBT)** – record result from DVM.
 - a. Expected value 170 VDC but not less than 150 VDC.
19. To test the **Forward Voltage Drop**:
 - a. When knob **(5)** is in **TOP** position: push and hold button **(7)** – record result from DVM.
 - b. When knob **(5)** is in **BOT** position: push and hold button **(9)** – record result from DVM.
 - i. Expected value will be between 600 mVDC and 700 mVDC. (± 100 mVDC)

NOTE: The expected value should be around 600-700 mVDC with the main concern being that all three phases are within close proximity of one another. If one or all phases are significantly higher or lower than the expected range, then the inverter should be replaced.

20. By releasing button **(7)**, the readout should return to the voltage level as recorded from step #18.
21. To test the Forward Voltage Drop of the **Free-Wheeling Diode**, turn knob **(4)** into **Vf (diode)** position – record result from DVM.
 - a. Expected value < -600 mVDC
22. Switch knob **(4)** to **off** position.
23. Switch knob **(5)** to **BOT** position.
24. Repeat steps **17-22** using button **(9)** for the **BOT** section.
25. Turn knob **(1)** into **off** position.
26. Remove **SKiiP AC** and **SKiiP DC +/-** test cables from the inverter.
27. Repeat steps **8-25** for sections 2 and 3 of the Inverter.
28. Use the chart in Table 3-1 to record test results.

Table 3-1 - Results Record Table

Inverter Test Results				
Step	Top	1	2	3
18	Voltage Drop-Off State			
19	Forward Voltage Drop			
21	Free Wheeling Diode			
Inverter Test Results				
Step	Bottom	1	2	3
18	Voltage Drop-Off State			
19	Forward Voltage Drop			
21	Free Wheeling Diode			

Appendix A: Acronyms

Acronym / Term	Definition
AC	Alternating Current
BMCC	Bearing Motor and Compressor Controller
BOT	Bottom
CW	Clockwise
DC	Direct Current
DTC	Danfoss Turbocor Compressors Inc.
DVM	Digital Volt Meter
IGBT	Insulated Gate Bipolar Transistor
I/O	Input / Output
kHz	Kilo Hertz
mVDC	Milivolts Direct Current
PCB	Printed Control Board
PWM	Pulse Width Modulation
SKiiP	SEMIKRON Intelligent Integrated Power
TG	Total-Green
TOP	Top
TT	Twin Turbo
VDC	Volts Direct Current
Vce	Voltage Collector-Emitter
Vf	Voltage Forward

THIS PAGE INTENTIONALLY LEFT BLANK

ENGINEERING
TOMORROW



Quick access to Danfoss TurboCor® compressor troubleshooting.

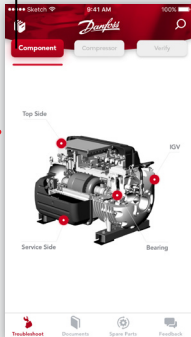
The new version of the **Danfoss TurboTool® 2.0** app for all your full service Danfoss TurboCor® compressor needs.

24/7
Access to Danfoss TurboCor® compressor troubleshooting on site

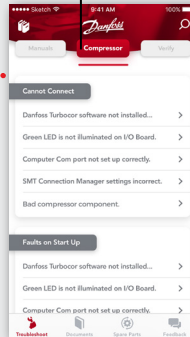


Troubleshoot

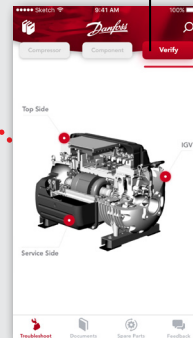
The TurboTool® app makes it easy for technicians to troubleshoot issues on Danfoss TurboCor® compressors.



The user can select from a list of symptoms in the app that match the problems exhibited by the compressor being serviced. The app will then list potential causes, solutions to the problem, and service literature to reference for further information.

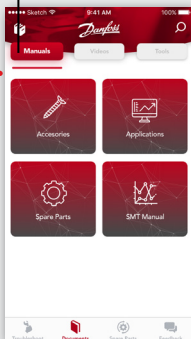


The app provides the correct operating parameters for key components: no need to keep reference documents on hand.

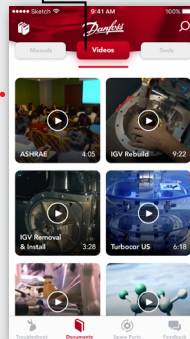


You no longer need to keep hundreds of pages of parts catalogs and training manuals. With the app, all of this information is at your fingertips on your smart device.

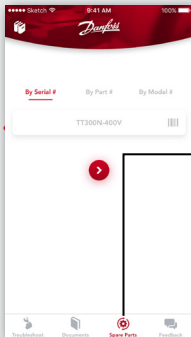
Spare Parts



With the app, you can access videos made by Danfoss TurboCor® that demonstrate how to remove, install, and rebuild key components on Danfoss TurboCor® compressors.



Spare Parts



TurboTool® helps you to quickly identify the required spare parts. A quick scan of the compressor serial # using your smartphone camera or by entering the part # or model #, and the app will display potential spare parts kits.

Download the 2.0 app today!



Scan to download app



www.turbocor.danfoss.com | TURBOCOR®

Danfoss Commercial Compressors

is a worldwide manufacturer of compressors and condensing units for refrigeration and HVAC applications. With a wide range of high quality and innovative products we help your company to find the best possible energy efficient solution that respects the environment and reduces total life cycle costs.

We have 40 years of experience within the development of hermetic compressors which has brought us amongst the global leaders in our business, and positioned us as distinct variable speed technology specialists. Today we operate from engineering and manufacturing facilities spanning across three continents.



Danfoss Scrolls



Danfoss Inverter Scrolls



Danfoss Turbocor Compressors



Danfoss Light Commercial Refrigeration Compressors



Danfoss Maneurop Reciprocating Compressors



Danfoss Optyma Condensing Units

Our products can be found in a variety of applications such as rooftops, chillers, residential air conditioners, heatpumps, coldrooms, supermarkets, milk tank cooling and industrial cooling processes.

<http://turbocor.danfoss.com>

Danfoss Turbocor 1769 E. Paul Dirac Drive 1769, Tallahassee FL 32310 USA | +1 850 504 4800

Danfoss can accept no responsibility for possible errors in catalogs, brochures, and other printed material. Danfoss reserves the right to alter its products without notice. This also applies to products already on order, provided that such alterations can be made without sub-sequential changes being necessary in specifications already agreed. All trademarks in this material are property of the respective companies. Danfoss and the Danfoss logotype are trademarks of Danfoss A/S. All rights reserved.