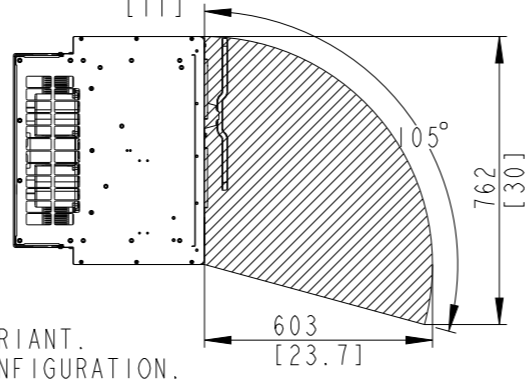
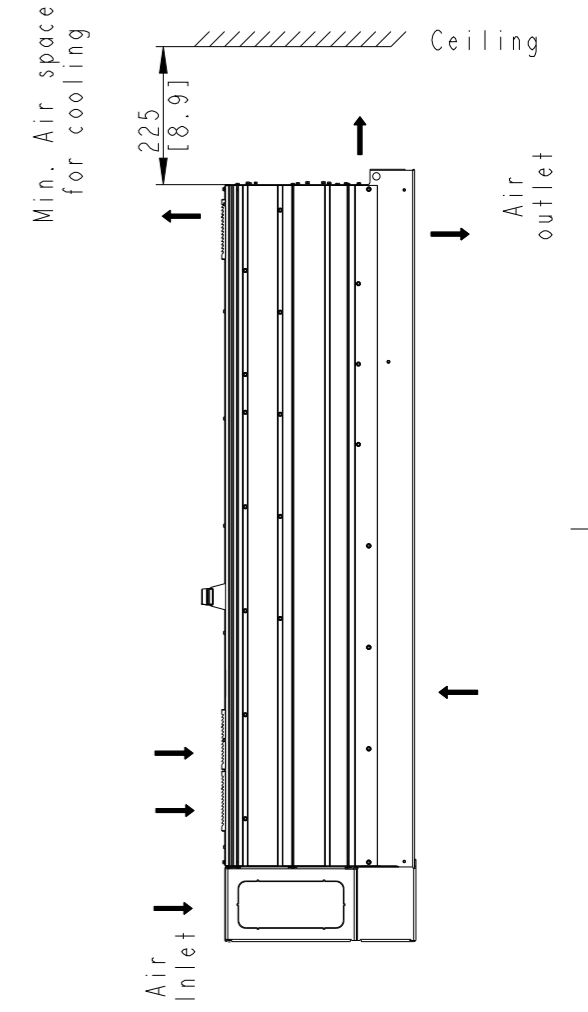
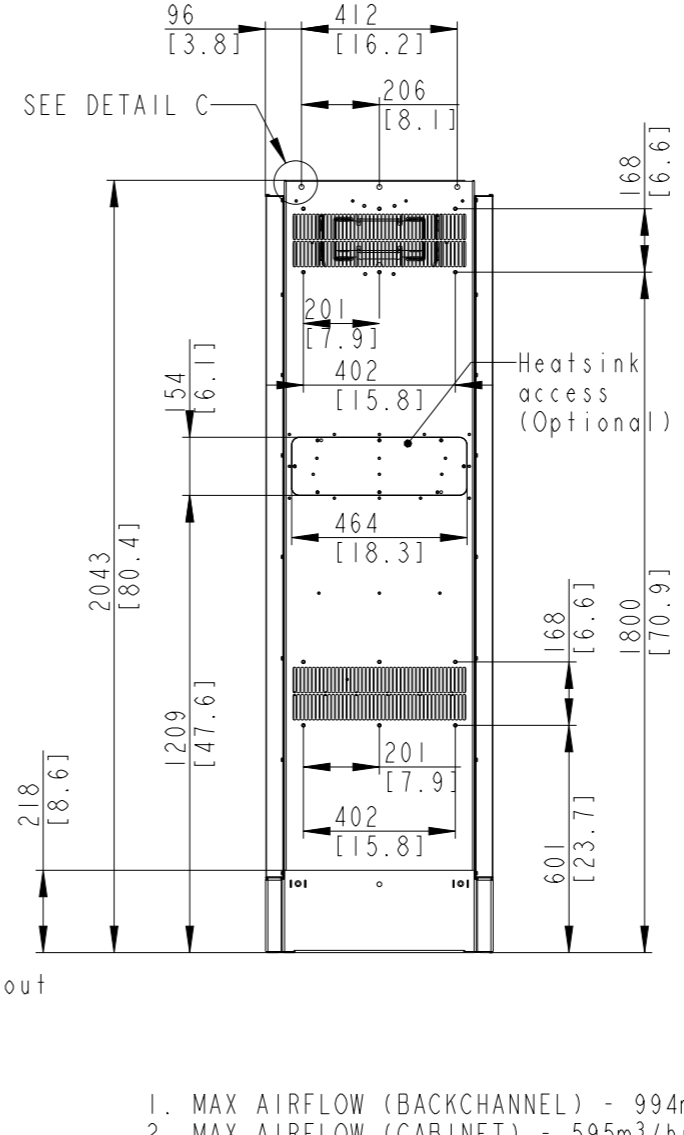
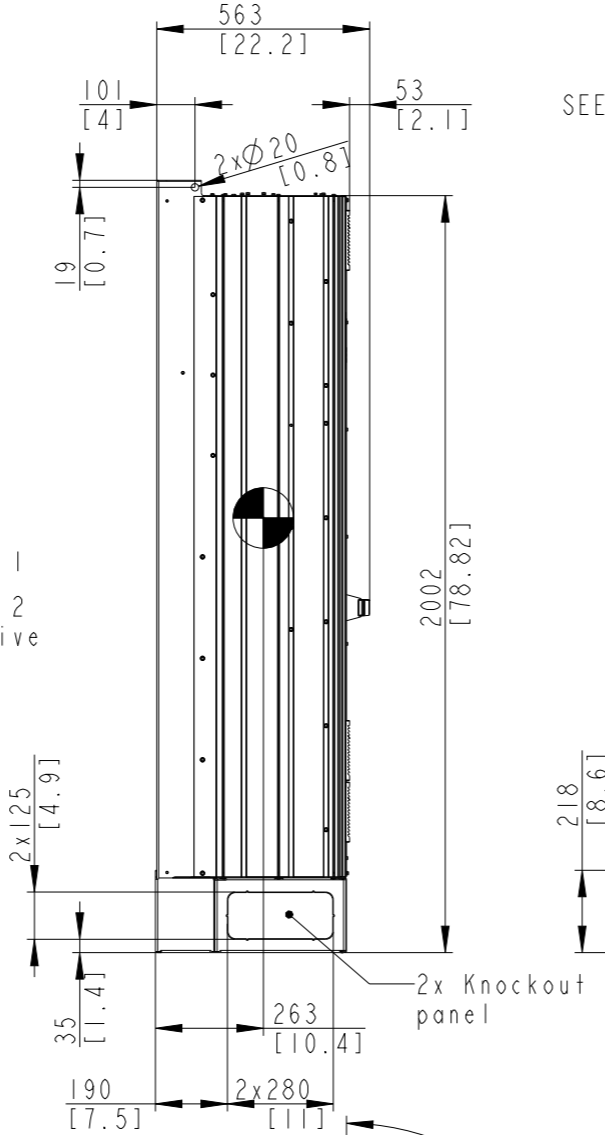
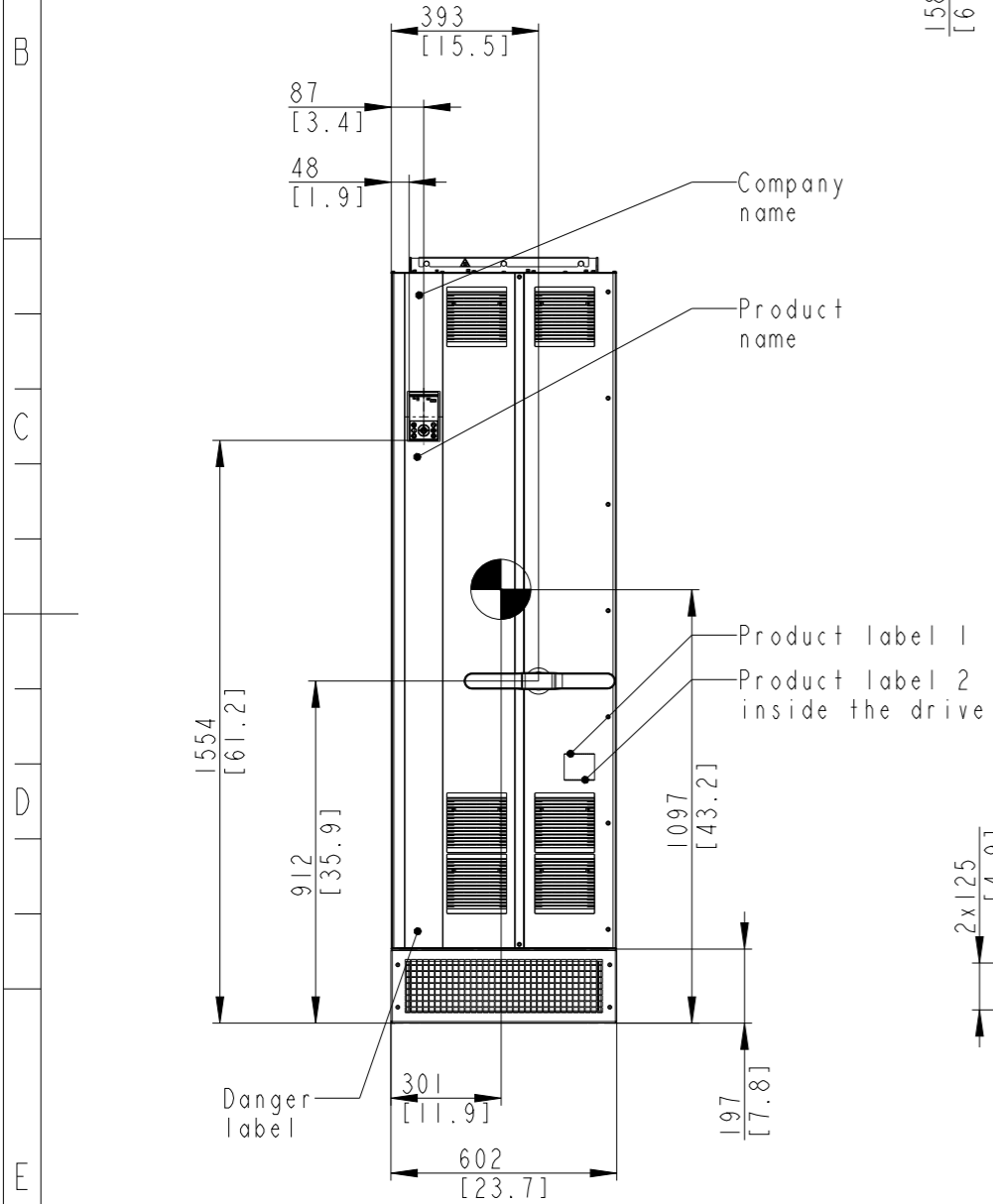
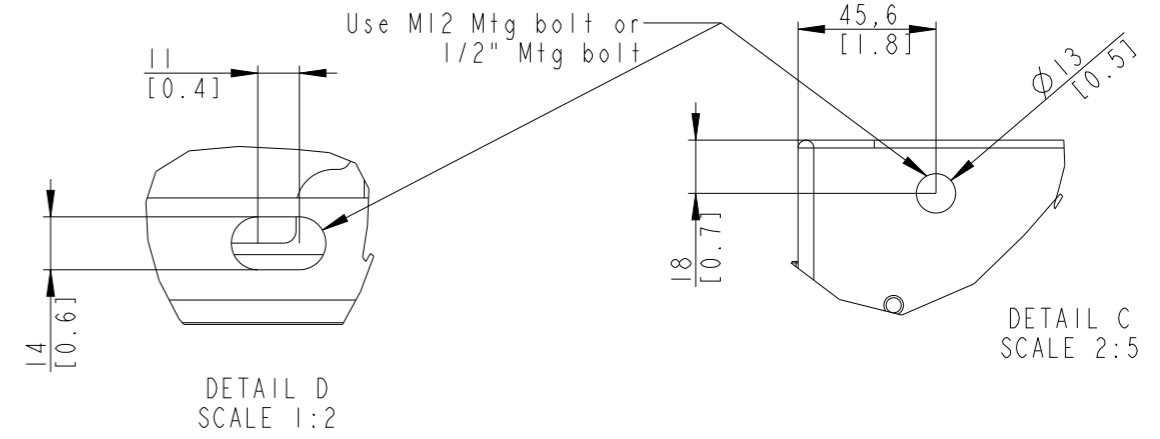
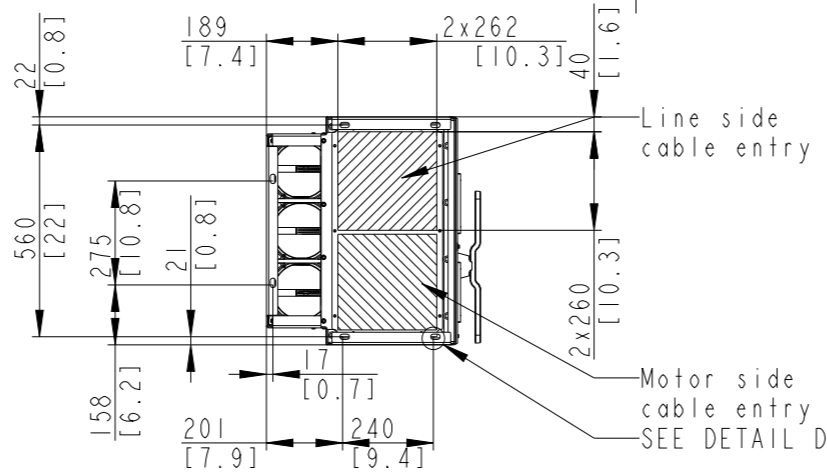


Type	Value
Max Weight	244kg/538lb
IP Class	IP54
UL Type	Type I2



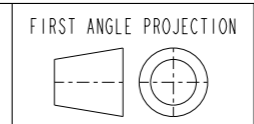
1. MAX AIRFLOW (BACKCHANNEL) - 994m³/hr (585CFM)
2. MAX AIRFLOW (CABINET) - 595m³/hr (350CFM)

Position of connectors	
A	Line
B	Motor
C	Brake
D	Interface X0
E	Interface X1/X2
F	Grounding connections

THIS DRAWING SHOWS THE MOST COMMON VERSION OF THIS PRODUCT VARIANT. SMALL DIFFERENCES MAY OCCUR DEPENDING ON THE FINAL PRODUCT CONFIGURATION.

CENTER OF GRAVITY: FOR REFERENCE ONLY, THE PRODUCT CONFIGURATION MAY INFLUENCE THE CG IN ALL THREE AXES.

UNLESS OTHERWISE SPECIFIED THE TOLERANCE IS ±0.1MM [0.4 INCH]. ALL DIMENSIONS ARE IN MILLIMETERS [INCH]



SCALE 1:20
DRAWING SIZE A3

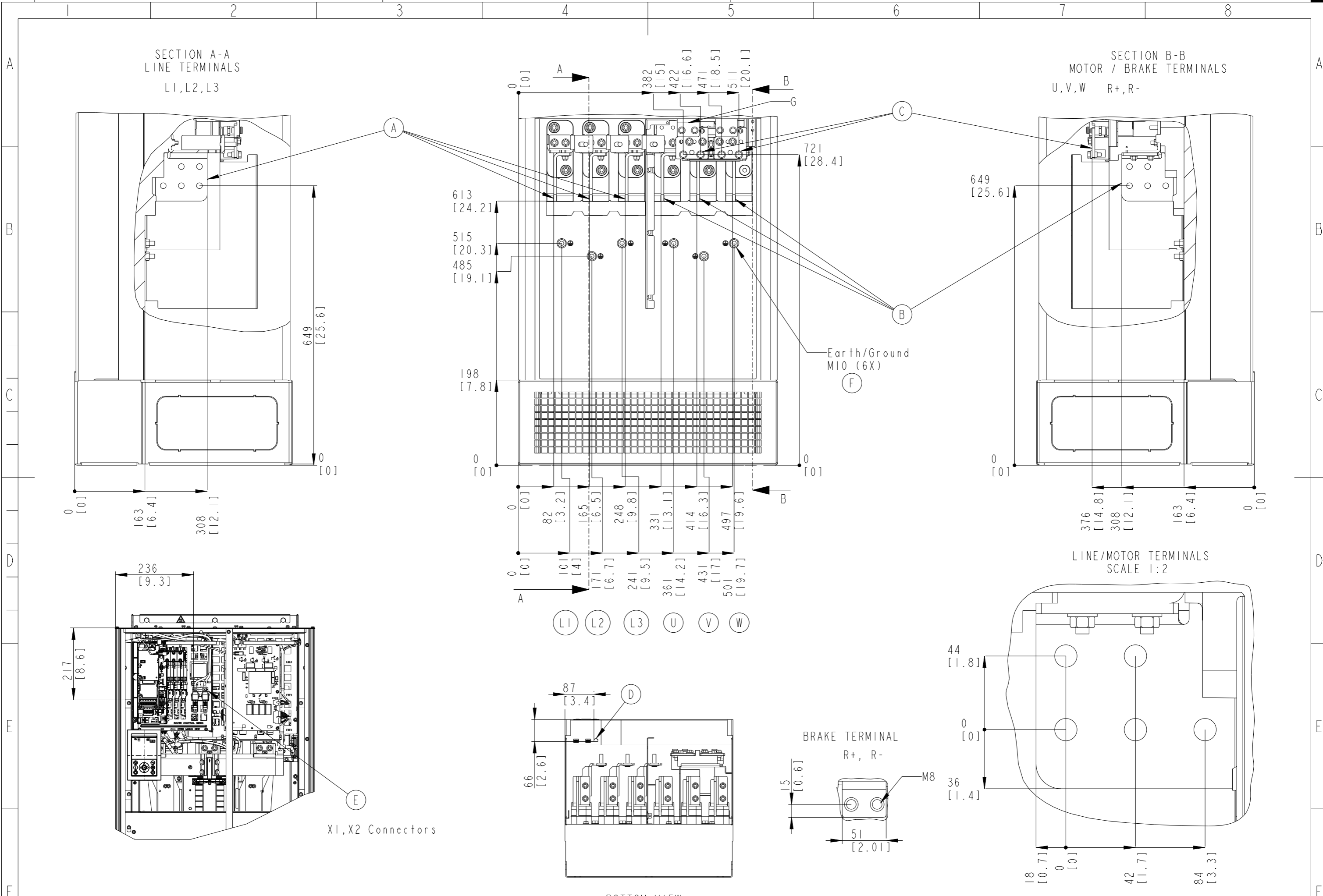
MATERIAL	-
FINISH	-

CHANGED		
DESIGNED	Kishore	05/17/23
CHECKED		



DESCRIPTION	
MCAD FB11 IP54	
DRAWING NUMBER	178r0022
REV	001
MODEL	MCAD FB11 IP54
SHEET	1 OF 2

PROPERTY OF DANFOSS A/S NORDBORG, DENMARK. TWO OR THREE DIMENSIONAL REPRODUCTION OF CONTENTS TO BE AUTHORIZED BY DANFOSS A/S.



THIS DRAWING SHOWS THE MOST COMMON VERSION OF THIS PRODUCT VARIANT.
 SMALL DIFFERENCES MAY OCCUR DEPENDING ON THE FINAL PRODUCT CONFIGURATION.

PROPERTY OF DANFOSS A/S NORDBORG, DENMARK. TWO OR THREE DIMENSIONAL REPRODUCTION OF
 CONTENTS TO BE AUTHORIZED BY DANFOSS A/S.

DRAWING NUMBER	178r0022	REV	001
MODEL	MCAD FB11 IP54	SHEET	2 OF 2