

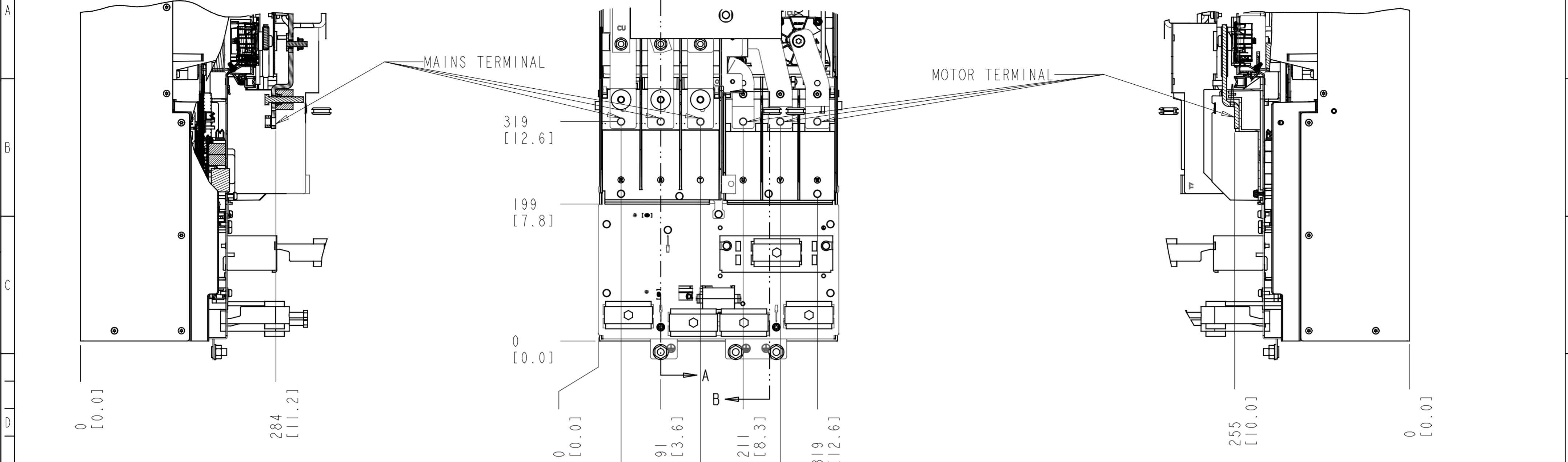
1. MAX AIRFLOW (BACKCHANNEL) - 14 M³/MIN (500 CFM)
2. MAX AIRFLOW (CABINET) - 3.4 M³/MIN (120 CFM)
3. MAX WEIGHT = 125 KG (275 LBS)
4. CENTER OF GRAVITY:
APPROXIMATE LOCATION ONLY, LOCATION MAY VARY BASED ON POWER RATING AND OPTIONS ORDERED.

\odot CRITICAL CHARACTERISTICS
 ∇ KEY CHARACTERISTICS
 \circ INSPECTION
 MUST COMPLY TO ROHS DIRECTIVE 2011/65/EU

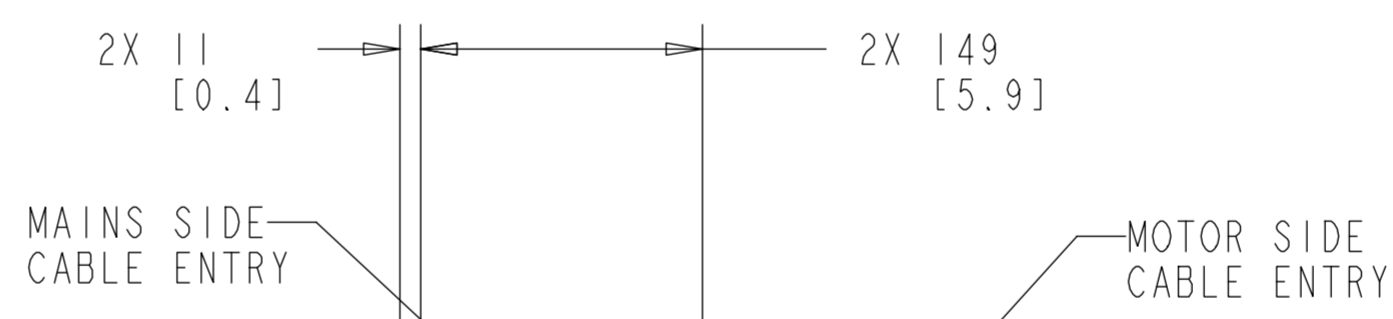
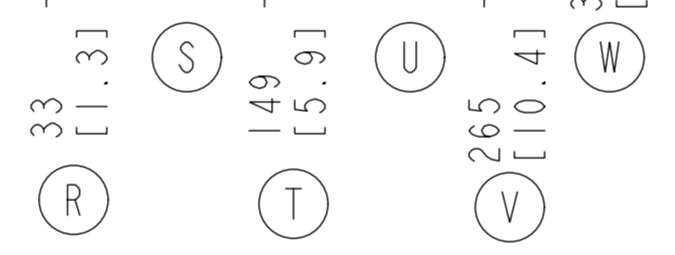
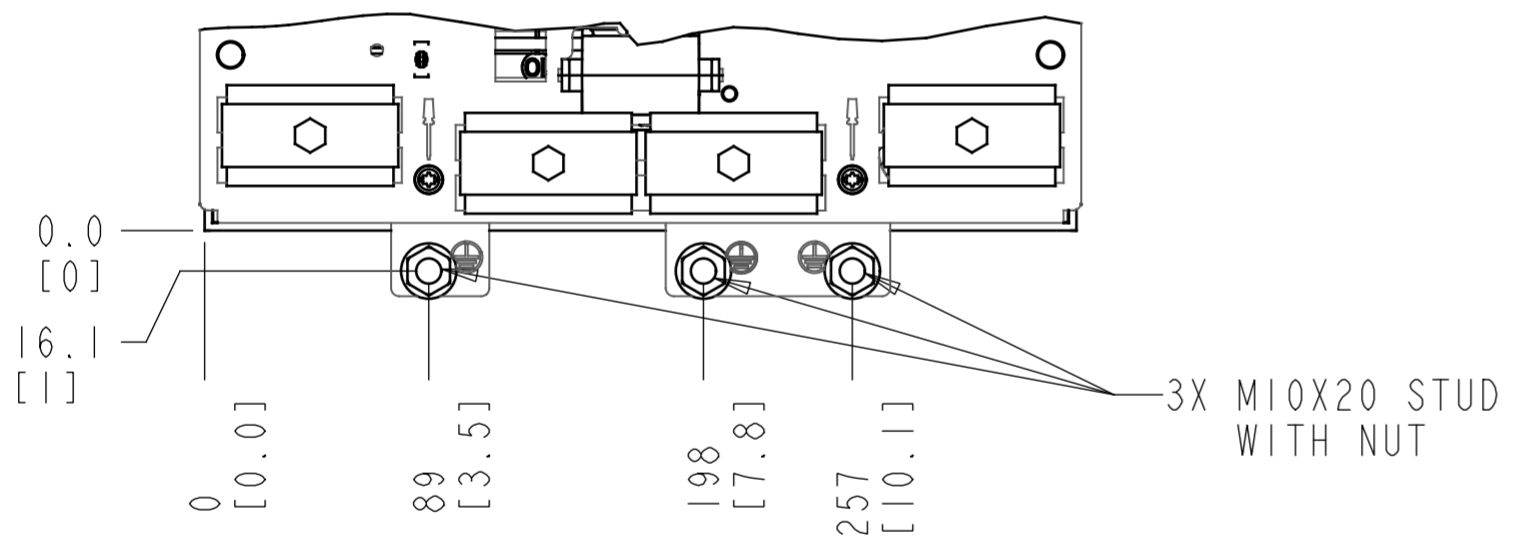
INTERPRET DIM. & TOL. PER ASME Y14.5M-1994 ALL DIMENSIONS ARE IN MILLIMETERS TOLERANCES UNLESS OTHERWISE SPECIFIED .X \pm 0.8 .XX \pm 0.50 \leq \pm 1.0		THIRD ANGLE PROJECTION	SCALE 0.150	SIZE A2	MATERIAL N/A
— PDM CONTROLLED DRAWING — NOT VALID WITHOUT FROZEN DATE IN ID STAMP				FINISH N/A	
CHANGED				DESCRIPTION INSTALLATION DRAWING, H14, IP20/CHASSIS	
DESIGNED	Hu Songtao 2021.06.17			DRAWING NUMBER FC111-H14-M-DRAWING	REV P1
CHECKED				MODEL P6060 H14 Production	SHEET 1 OF 3
CONFIDENTIAL: PROPERTY OF DANFOSS A/S NORDBORG, DENMARK. NOT TO BE HANDED OVER TO BE COPIED OR BE USED BY A THIRD PARTY. TWO OR THREE DIMENSIONAL REPRODUCTION OF CONTENTS TO BE AUTHORIZED BY DANFOSS A/S.					

SECTION A-A
MAINS TERMINALS

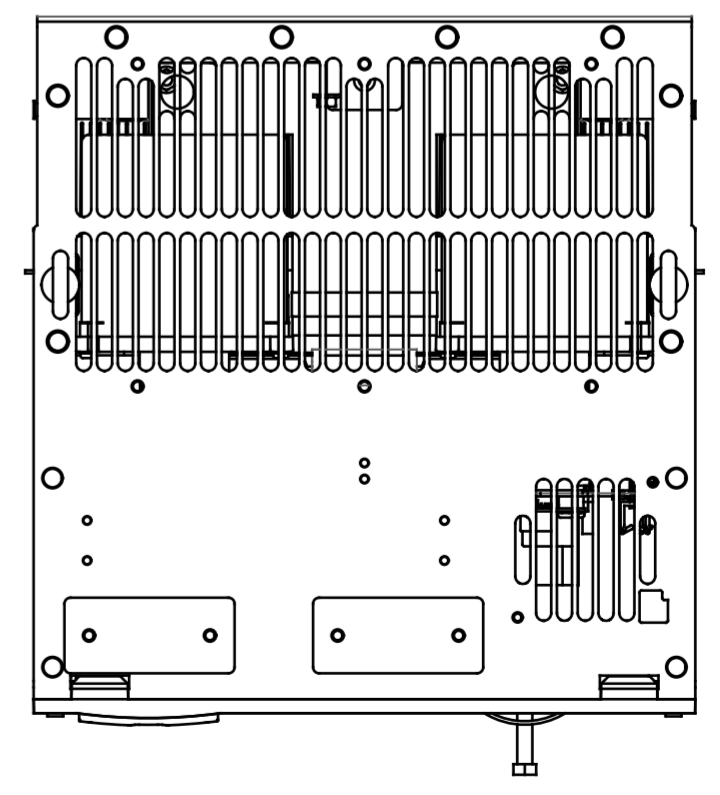
SECTION B-B
MOTOR TERMINALS



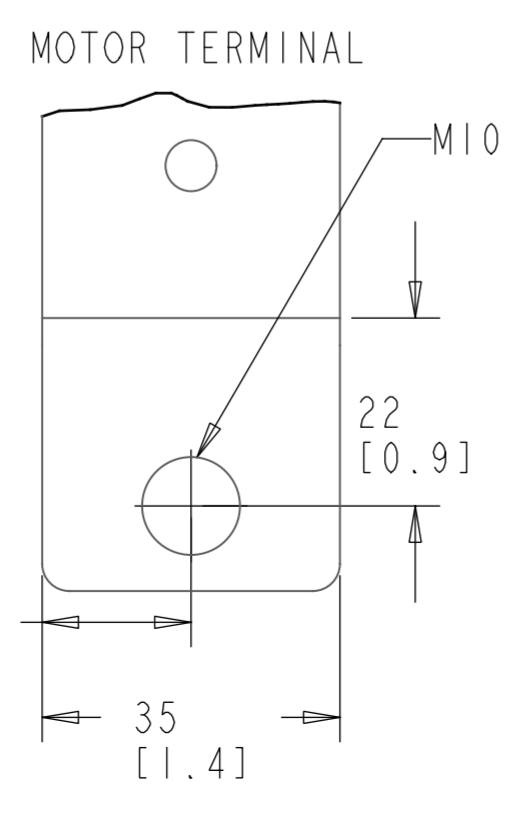
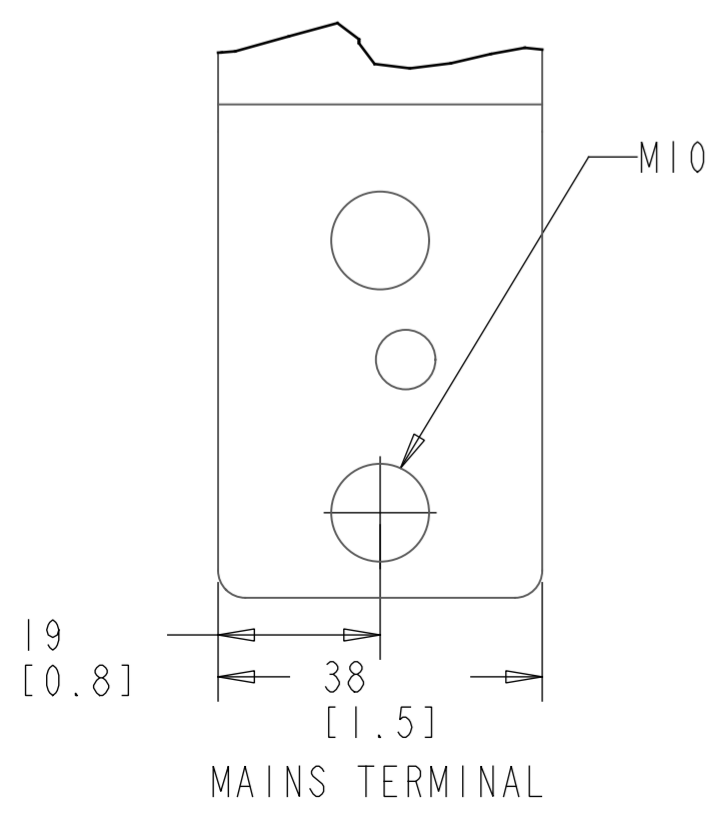
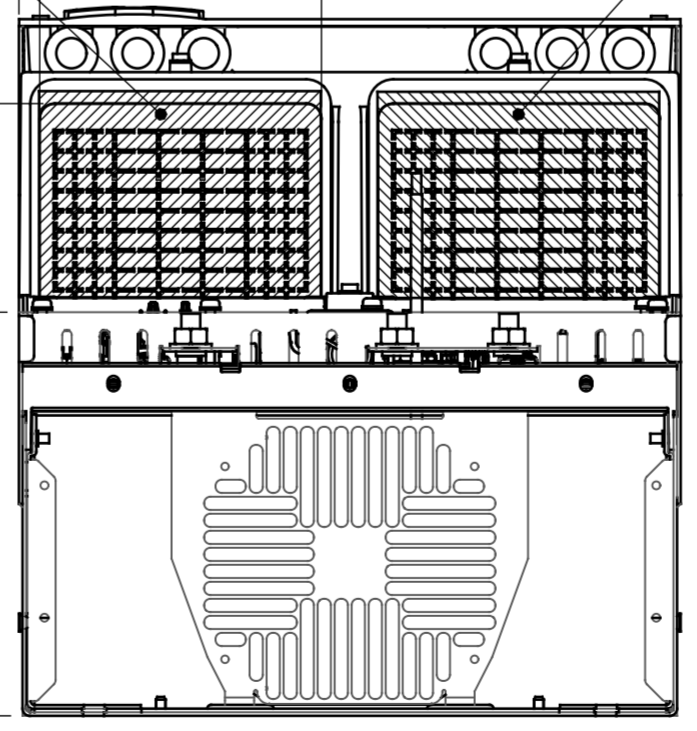
EARTHING / GROUNDING CONNECTIONS



TOP VIEW



BOTTOM VIEW



NOTES:

1. PLACE CABLES THROUGH MARKED AREAS
2. 185MM² (400MCM) MAX WIRE SIZE

DRAWING NUMBER	FC111-H14-M-DRAWING	REV	P1
MODEL	P6060 H14 PRODUCTION	SHEET	2 OF 3

THE TABLES BELOW MAY BE USED TO CONFIRM THE CORRECT FRAME SIZE AND DRAWING FOR A SPECIFIC DRIVE RATING (POWER AND VOLTAGE). THIS DRAWING IS FOR HI4 FRAMES, THE TABLES BELOW IDENTIFY WHICH DRIVES ARE REPRESENTED BY THIS DRAWING.

KW RATED DRIVES			
KW NORMAL OVERLOAD	200	250	315
400V	HI4	HI4	HI4

THE TABLE BELOW CAN BE USED TO DETERMINE THE FRAME SIZE IF THE SPECIFIC MODEL/TYPECODE IS KNOWN.

PLATFORM	VOLTAGE	MODEL/TYPECODE	FRAME(IP20)
FC-111	T4	FC-111P200T4	HI4
		FC-111P250T4	
		FC-111P315T4	