

Type	Value
Weight	17Kg/37.5lbs
IP class	IP20
UL type	Open
Frame	AAF01

Mains Terminal L1,L2,L3,N  
Torque 2.5-3.0Nm  
wire cross section 25mm<sup>2</sup>

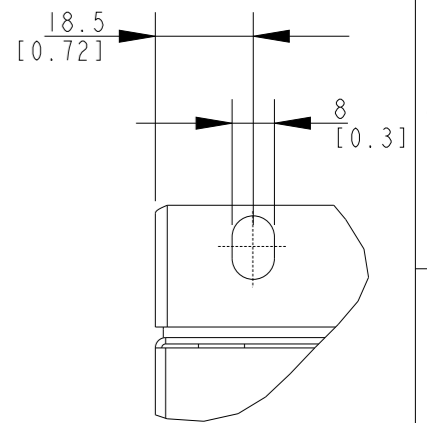
Control Terminals  
Torque 0.8Nm  
wire cross section 1mm<sup>2</sup>

EPO Terminal  
Torque 0.8Nm  
wire cross section 1mm<sup>2</sup>

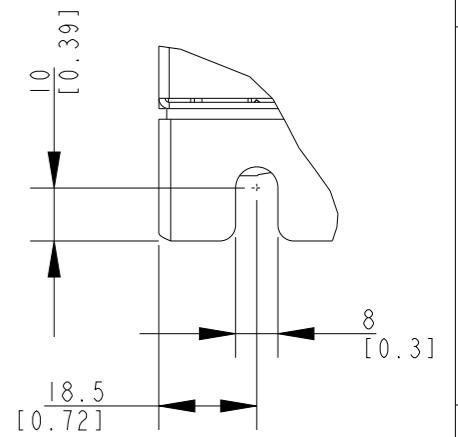
SEE DETAIL C

DETAIL C  
SCALE: 1:3

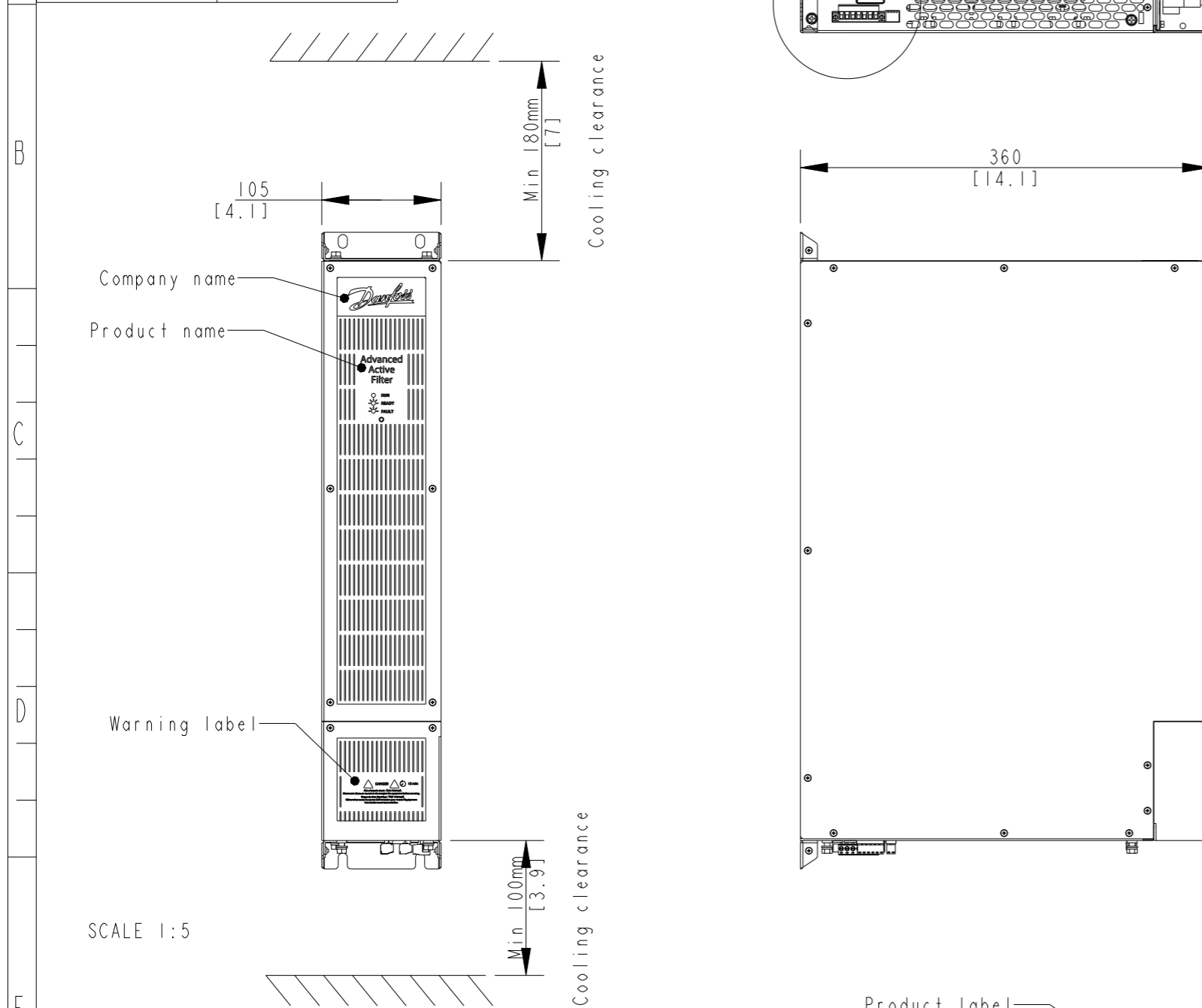
CT Terminal  
Torque 0.8Nm  
wire cross section 2.5mm<sup>2</sup>



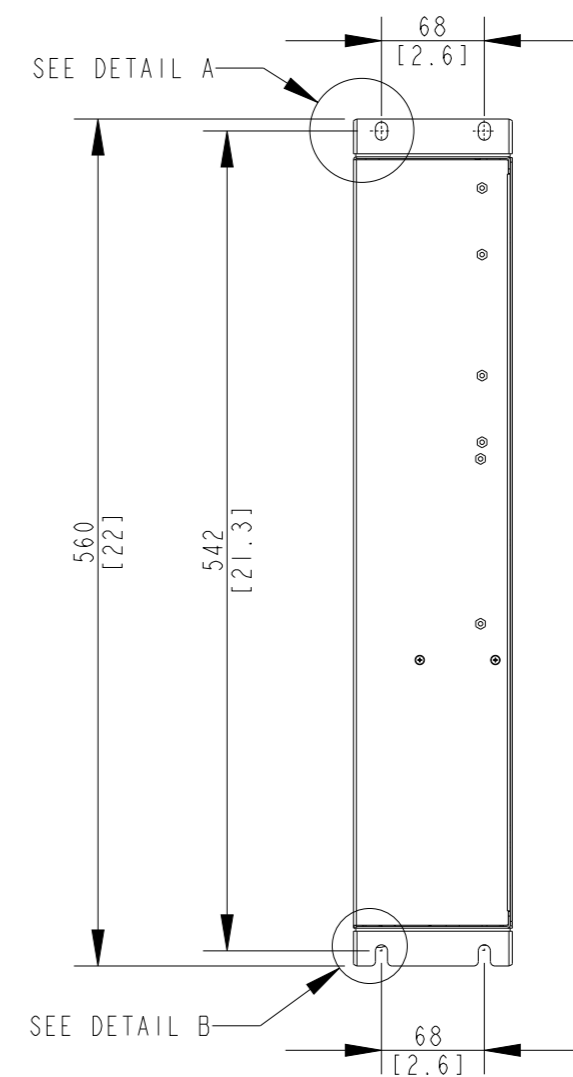
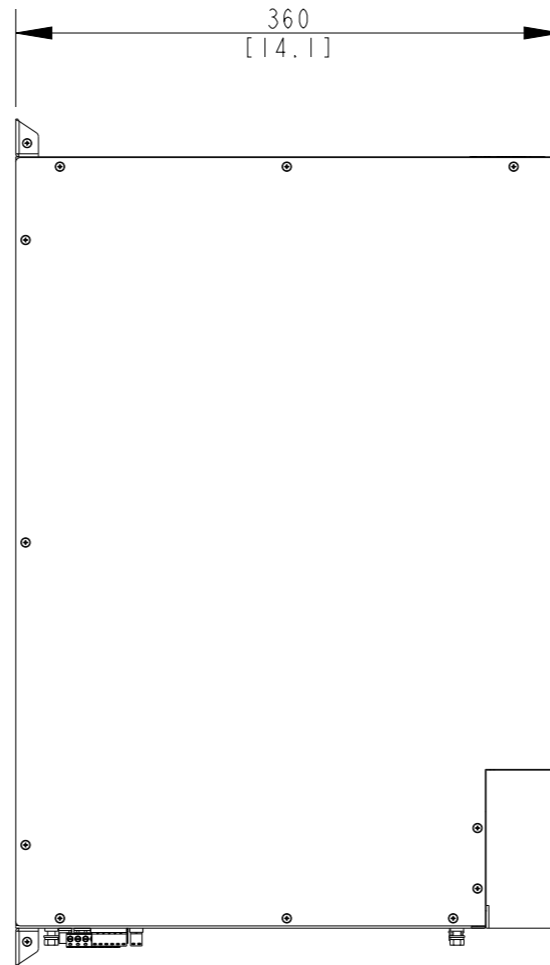
DETAIL A  
SCALE: 2:3



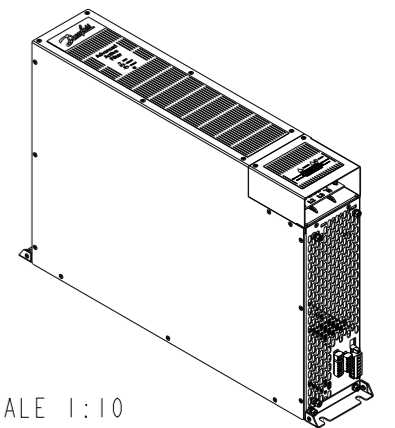
DETAIL B  
SCALE: 2:3



SCALE 1:5



SCALE 1:10



Company name

Product name

Warning label

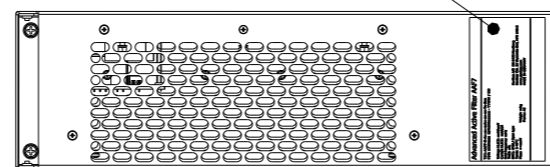
Product label

Tolerances (mm)

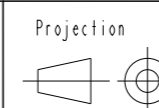
Dimension	<250	250>x>800	800	Parts in series	Folded parts
Tolerance	+/-1	+/-2.5	+/-4	+/-2.5	+/-2.5

- ⊖ Critical Characteristics
- ▽ Key Characteristics
- Inspection
- ⊗ Measured when requested

Surfaces according to OPE00242, unmarked surfaces class D  
Must Comply to RoHS Directive 2011/65/EU and 2015/863/EU



All dimensions are in Millimeters  
Unspecified tolerance according to:



Mass/Kg

Thickness

Size

Material

Finish

Designation / Name

MCAD-AAF-007-55A-IP20

Other dimensions acc. to 3D-model

Replace

Designer

Modifier

Danfoss 03/28/24

**Danfoss**

Confidential: Property of Danfoss and its subsidiaries. Not to be copied, handed over to or used by third party. Two- or three dimensional reproduction of content to be authorized by Danfoss Drives A/S

No. MCAD-AAF-007-55A-IP20

Rev. P

Sheet 1 of 1

Changes:

Model: MCAD-AAF-007-55A-IP20\_ASSEM