

4

3

2

1

- NOTICE -

THIS DOCUMENT CONTAINS PROPRIETARY INFORMATION OF DANFOSS DRIVES. IT IS LOANED BY DANFOSS DRIVES SUBJECT TO THE CONDITIONS THAT IT AND THE INFORMATION EMBODIED THEREIN SHALL BE USED ONLY FOR RECORD AND REFERENCE PURPOSES, SHALL NOT BE USED OR CAUSED TO BE USED IN ANY WAY PREJUDICIAL TO THE INTERESTS OF DANFOSS DRIVES, SHALL NOT BE REPRODUCED OR COPIED IN WHOLE OR IN PART OR DISCLOSED TO ANYONE WITHOUT THE DIRECT WRITTEN PERMISSION OF DANFOSS DRIVES, AND SHALL BE RETURNED UPON REQUEST.

Type	Value
IP Class	IP21/54
UL Class	UL Type 1/12

DETAIL A  
1:2

DETAIL B  
1:2

SEE DETAIL A

2X KNOCKOUT PANEL

SEE DETAIL B

HEAT SINK ACCESS PANEL

6X DETAIL C  
1:2

SEE DETAIL C

1. MAX AIR FLOW (BACKCHANNEL) 21.5 M<sup>3</sup> / MIN (760 CFM)
2. MAX AIR FLOW (CABINET) 10.5 M<sup>3</sup> / MIN (370 CFM)
3. MAX WEIGHT = 318 KG (700 LBS)
4. CENTER OF GRAVITY:  
APPROXIMATE LOCATION ONLY, LOCATION MAY VARY  
BASED ON POWER RATING AND OPTIONS ORDERED

UNLESS OTHERWISE SPECIFIED		PROPERTIES	
INTERPRET DIM AND TOL PER ASME Y14.5M-1994	MATERIAL	N/A	
.X ±0.4 .XX ±0.2 ∠ ±0.5	FINISH	N/A	
DIM. ARE IN MILLIMETERS	THICKNESS	N/A	
WEIGHTS ARE IN KILOGRAMS	EST. WEIGHT	318	
THIRD ANGLE PROJECTION	APPROVALS	INITIALS	DATE
	DRAWN	LAURI	06/24/20
	CHECKED		
	ENGR		

TITLE		
INSTALLATION DRAWING, E2H, IP21/54		
SIZE	MODEL	REV
C		001
SCALE	DRAWING NO.	SHEET
0.08	177R0705	1 OF 2

4401 N. BELL SCHOOL RD. LOVES PARK, ILLINOIS 61111 USA  
(815) 639-8600 FAX (815) 639-8000

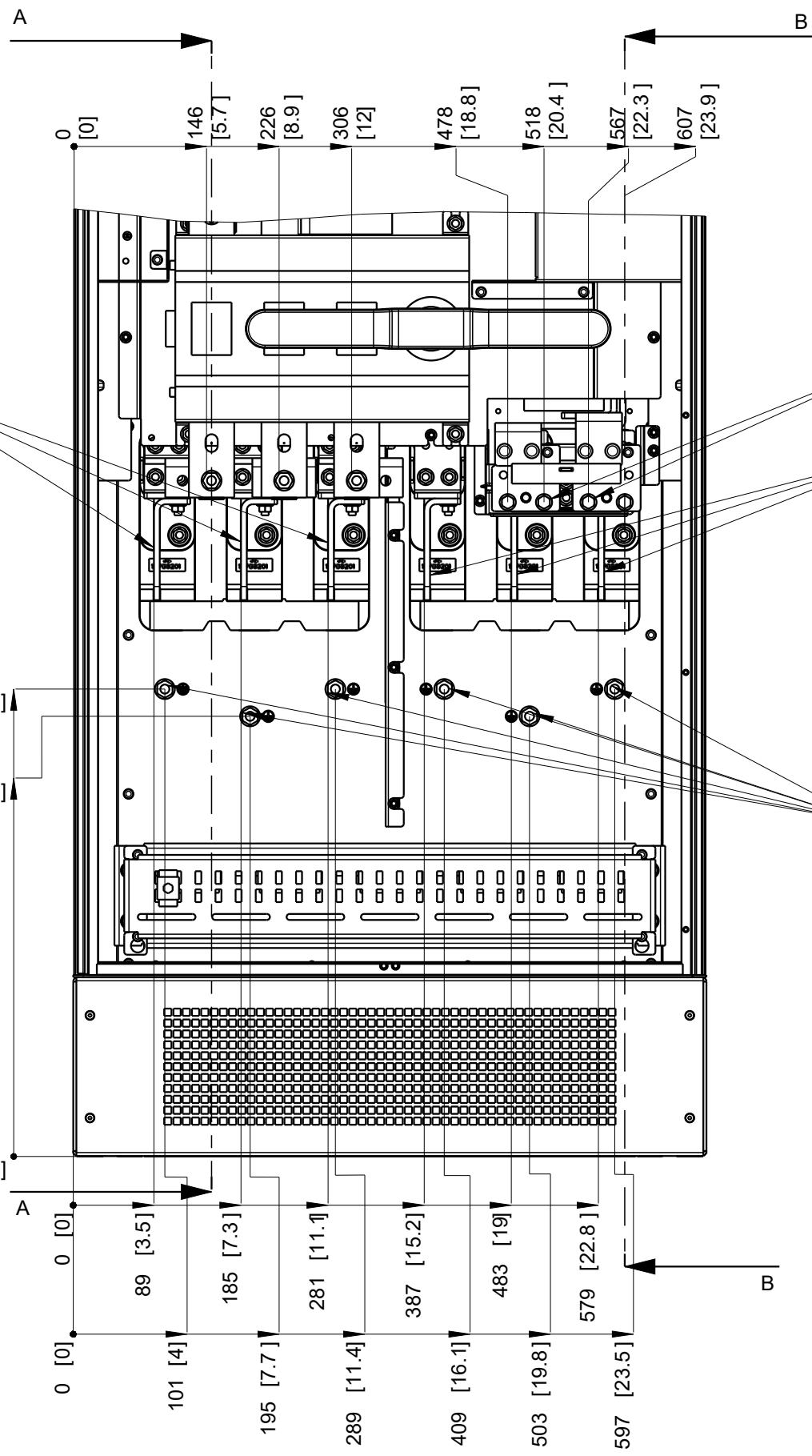
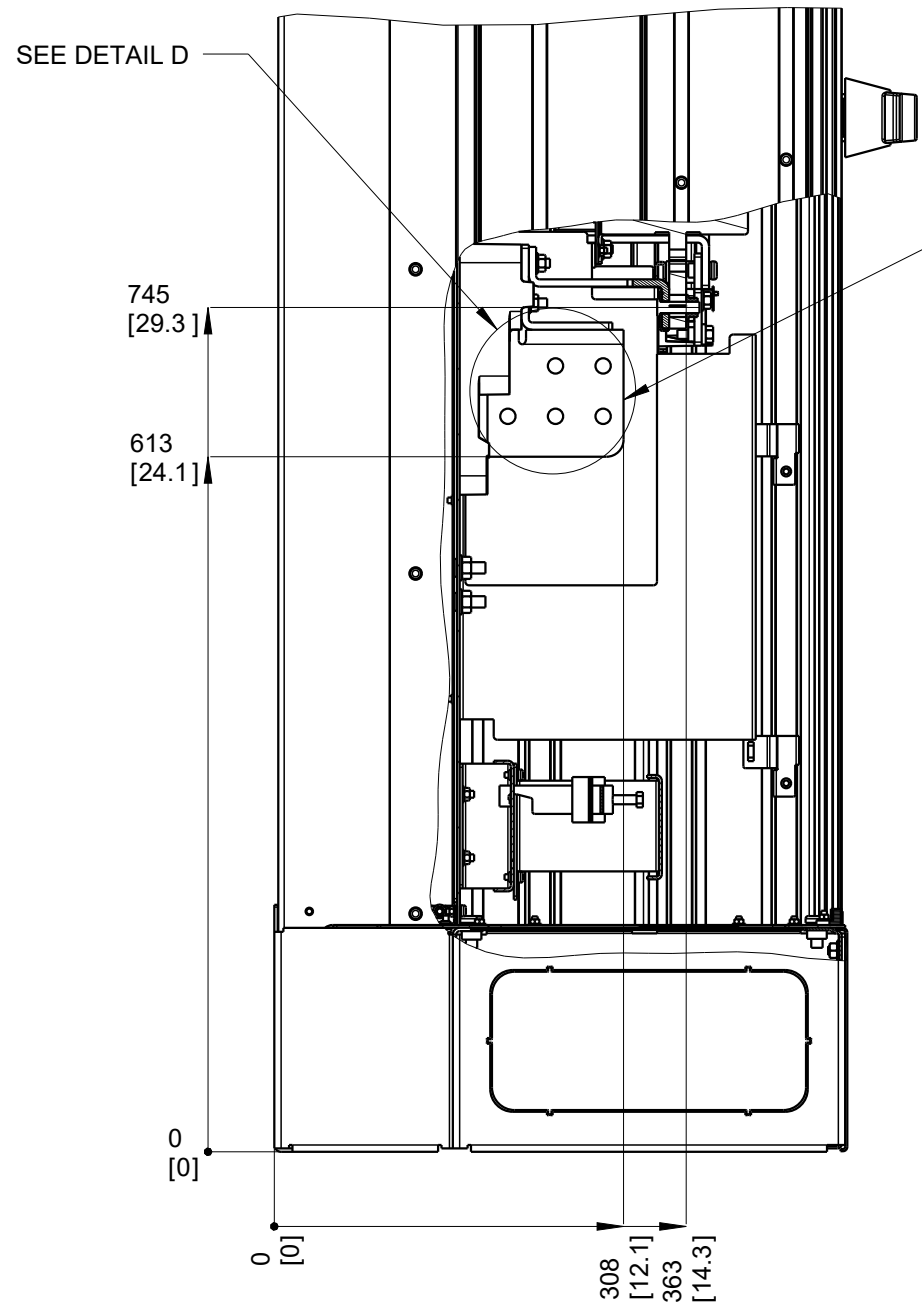
4

3

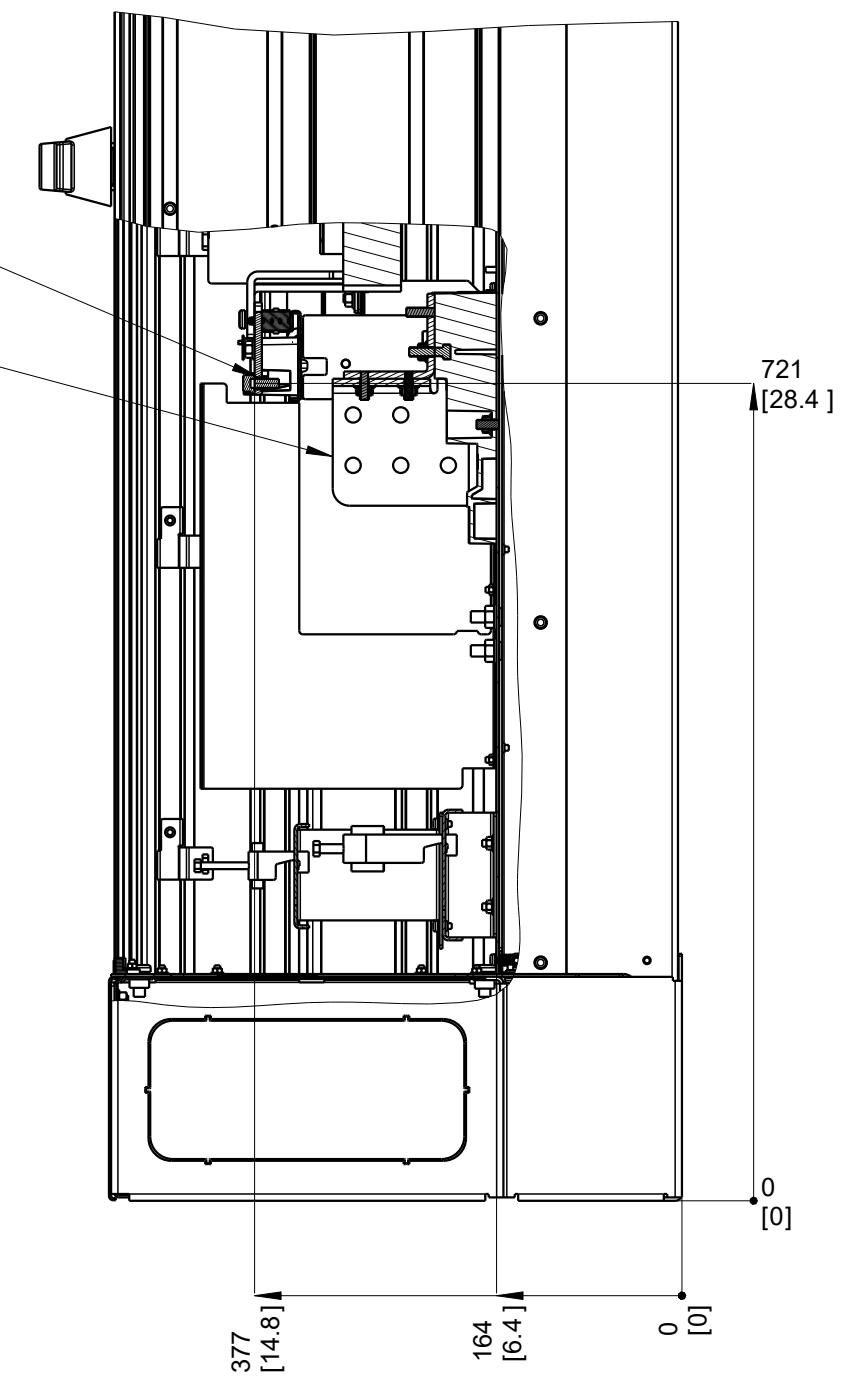
2

1

SECTION A-A  
LINE TERMINALS



SECTION B-B  
MOTOR / BRAKE TERMINALS



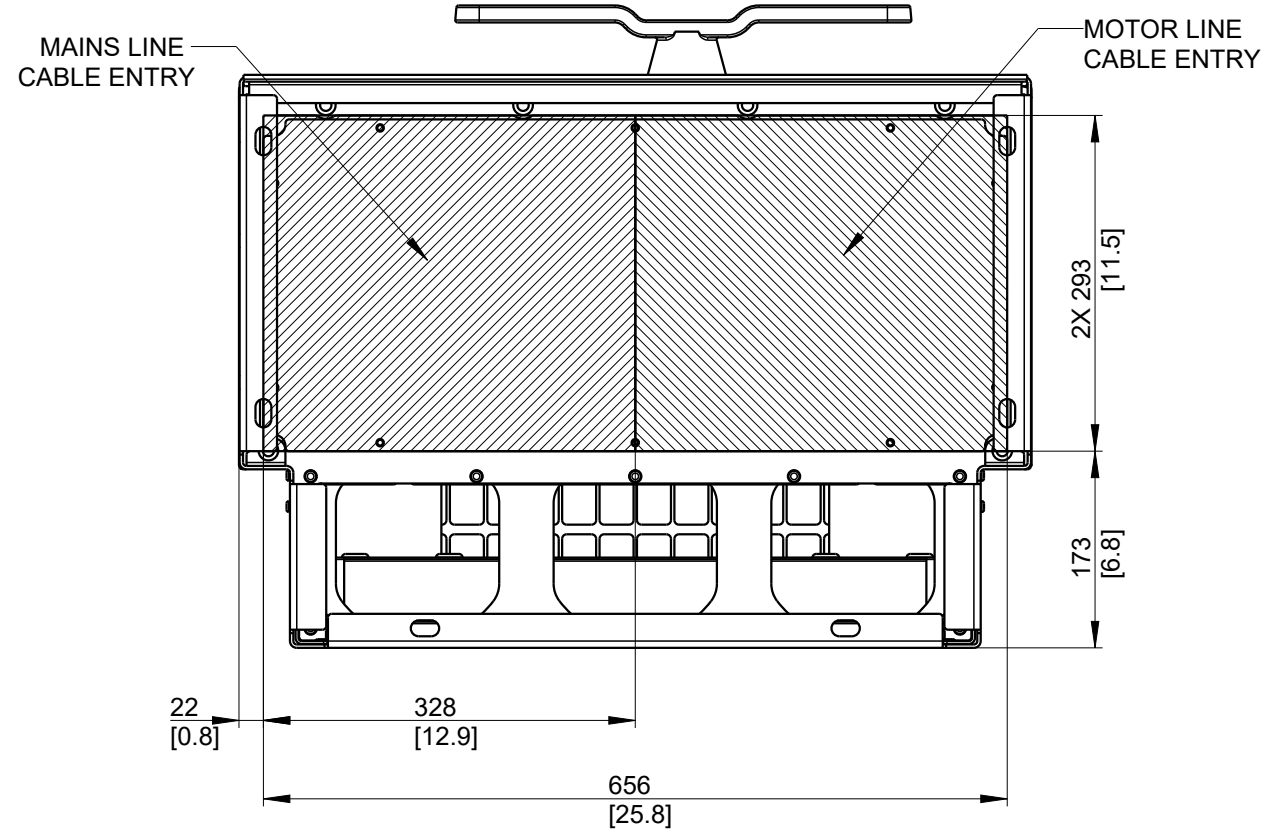
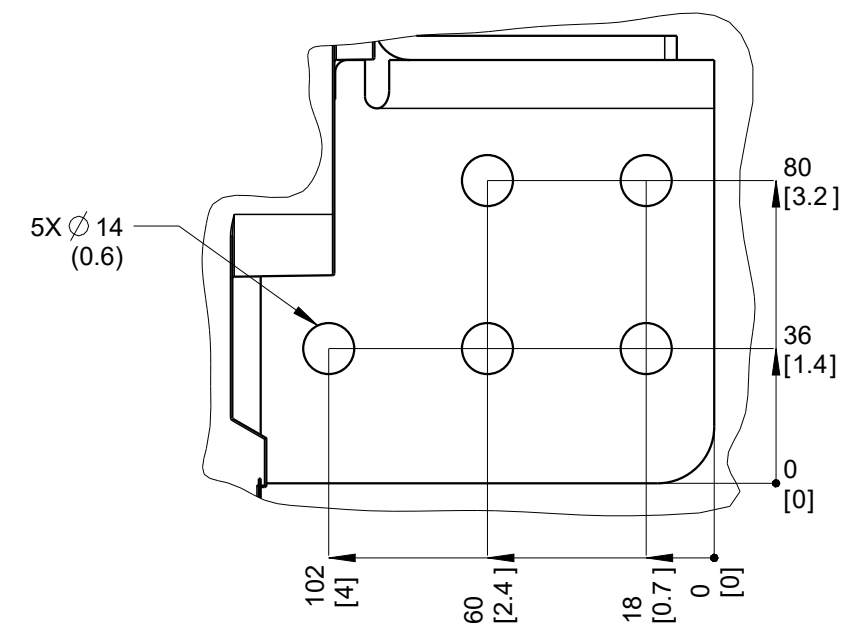
LINE TERMINALS

BRAKE

MOTOR  
TERMINALS

6X M10x20 STUD  
WITH NUT

6X DETAIL D  
1:2



MAINS LINE  
CABLE ENTRY

MOTOR LINE  
CABLE ENTRY

TITLE		
INSTALLATION DRAWING, E2H, IP21/54		
SIZE	MODEL	REV
C		001
SCALE	DRAWING NO.	SHEET
0.15	177R0705	2 OF 2