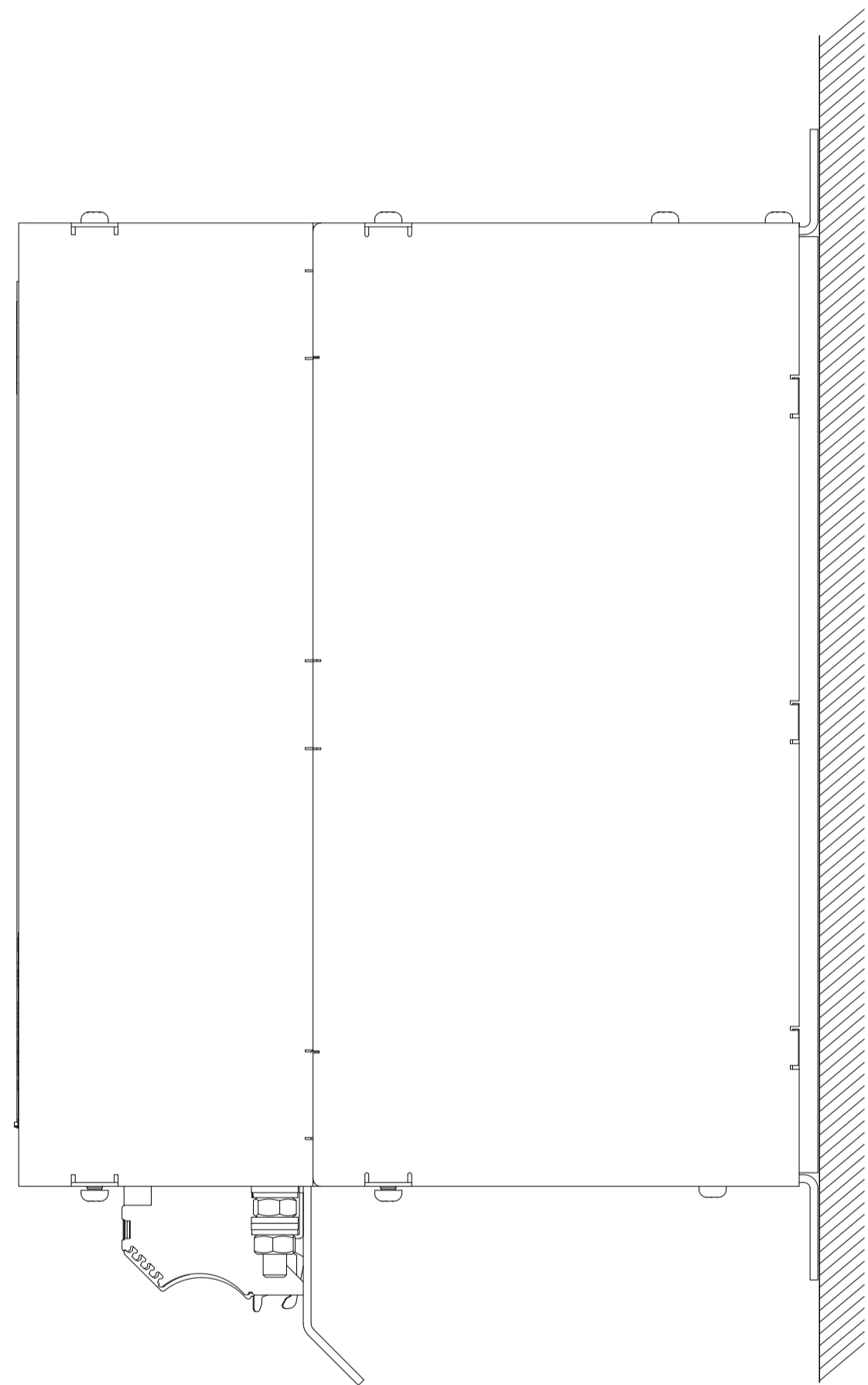
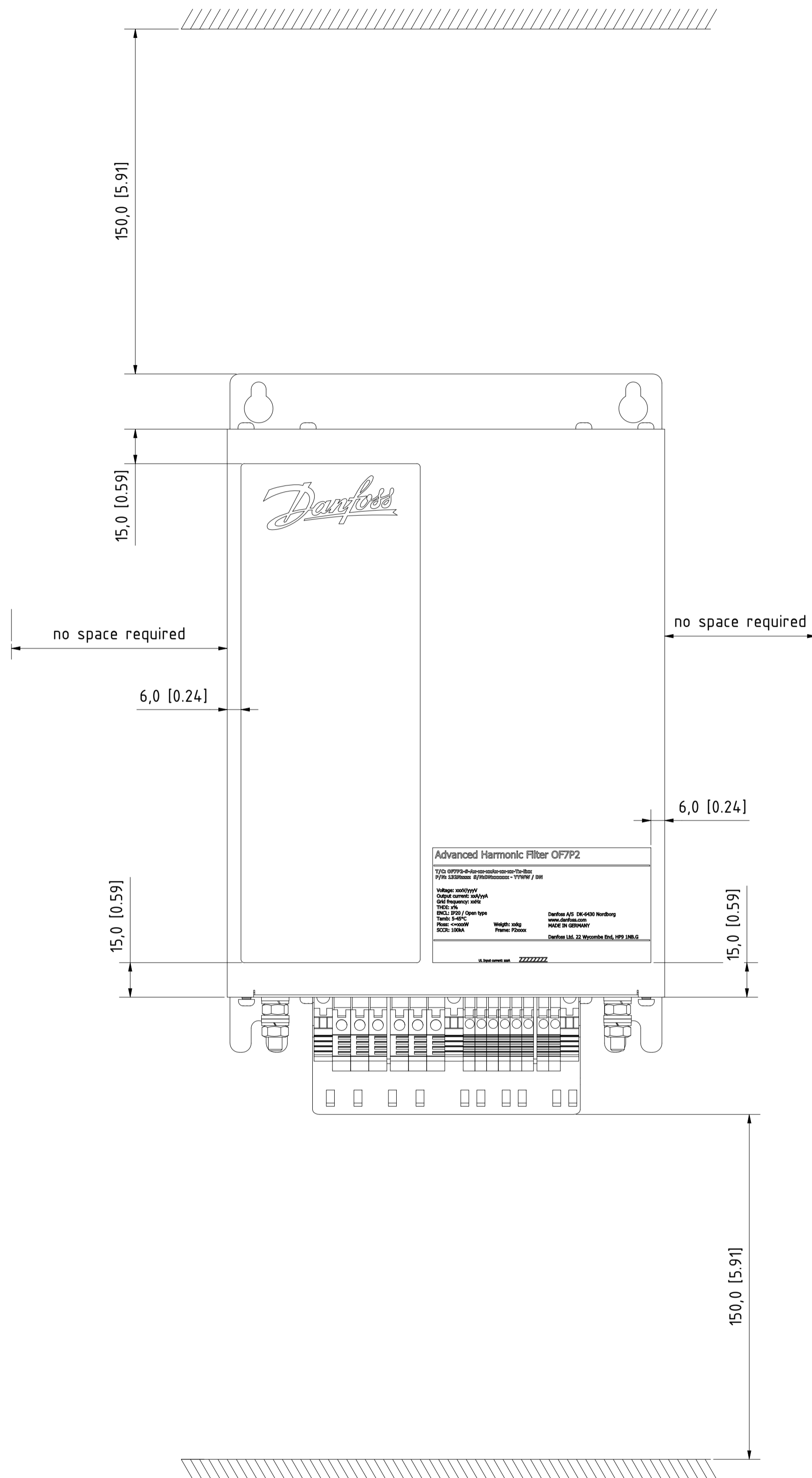
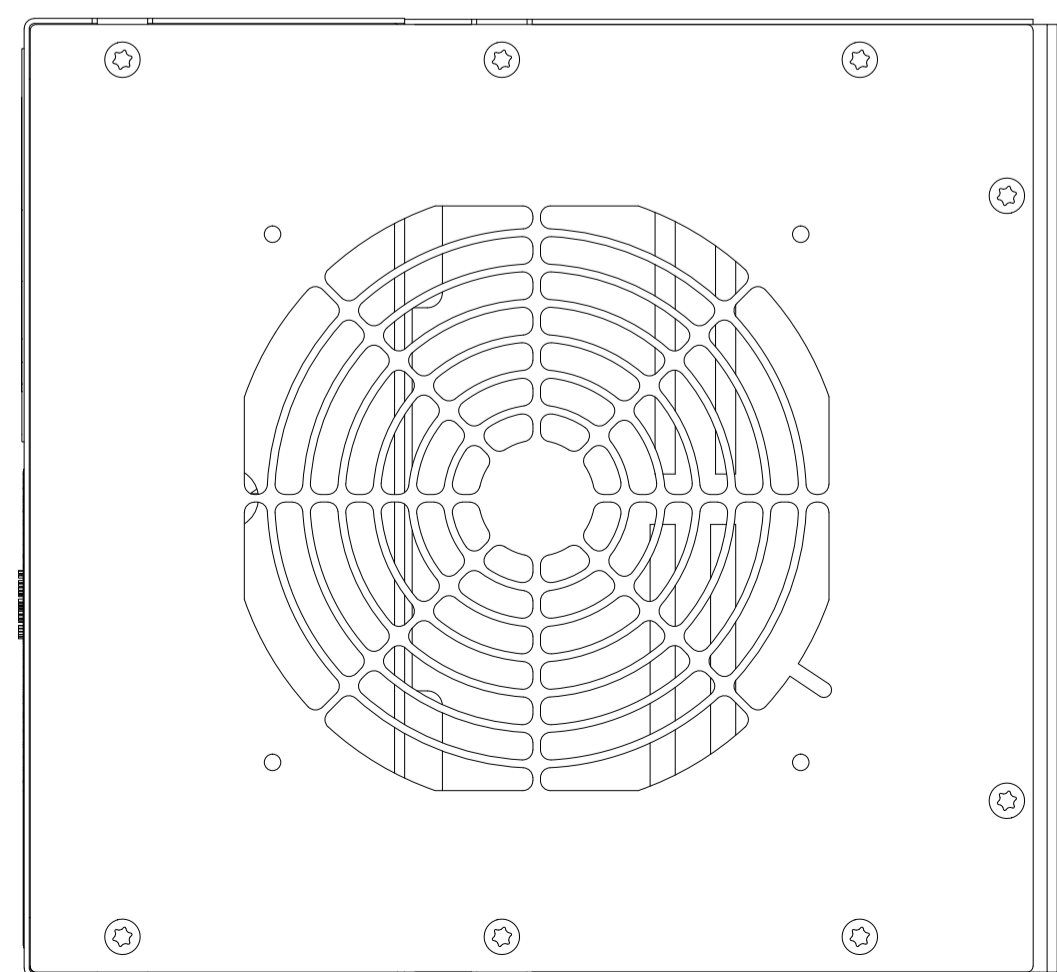


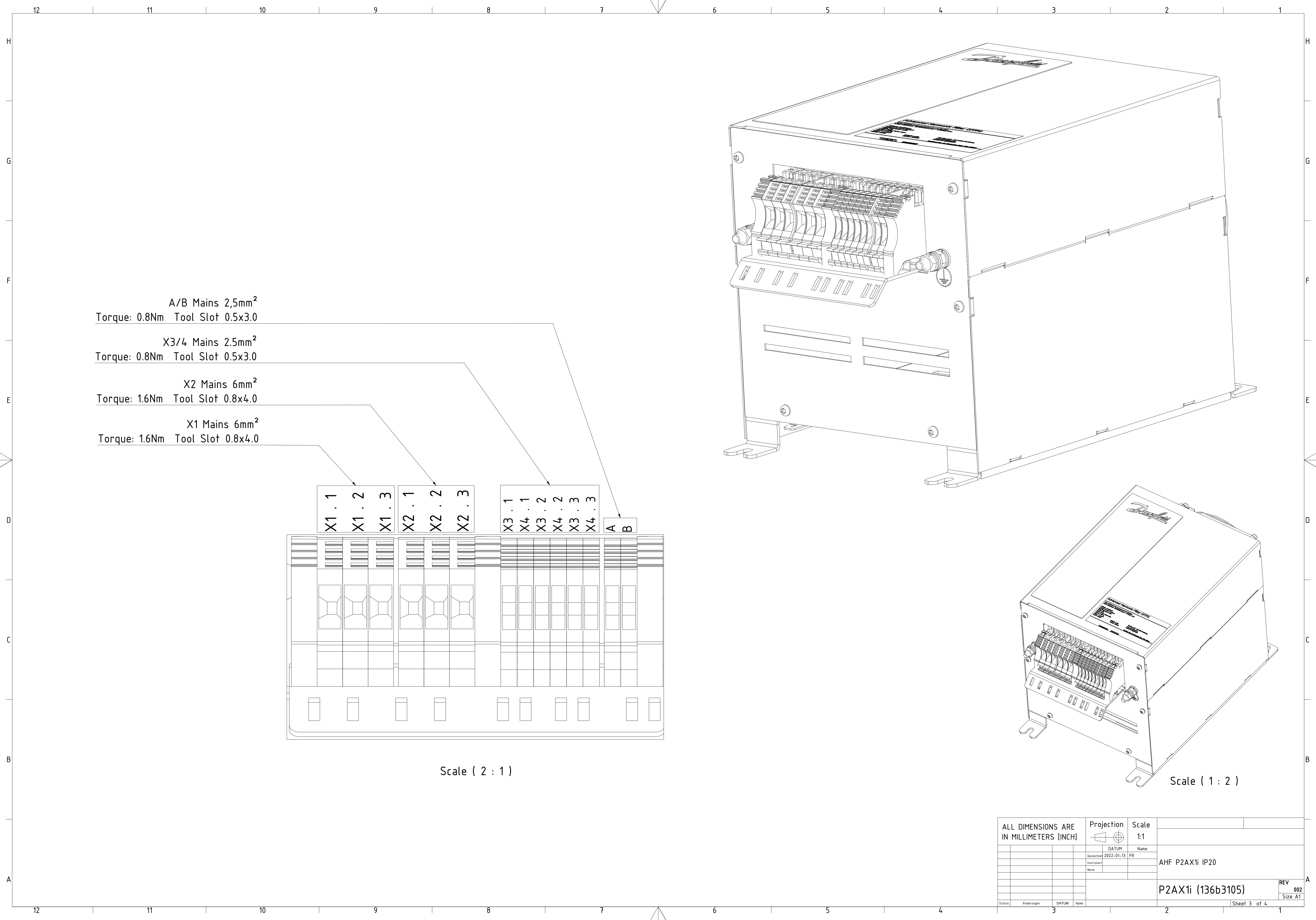
PE M6 (10Nm)



Mounting wall



ALL DIMENSIONS ARE IN MILLIMETERS [INCH]		Projection	Scale	
			1 : 1.5	
	DATUM	Name		
	Gezeichnet	2022-01-13	FR	
	Kontrolliert			AHF P2AX1i IP20
	Notiz			
				P2AX1i (136b3105)
				REV 002
				Size A1
Status	Änderungen	DATUM	Name	Sheet 2 of 4

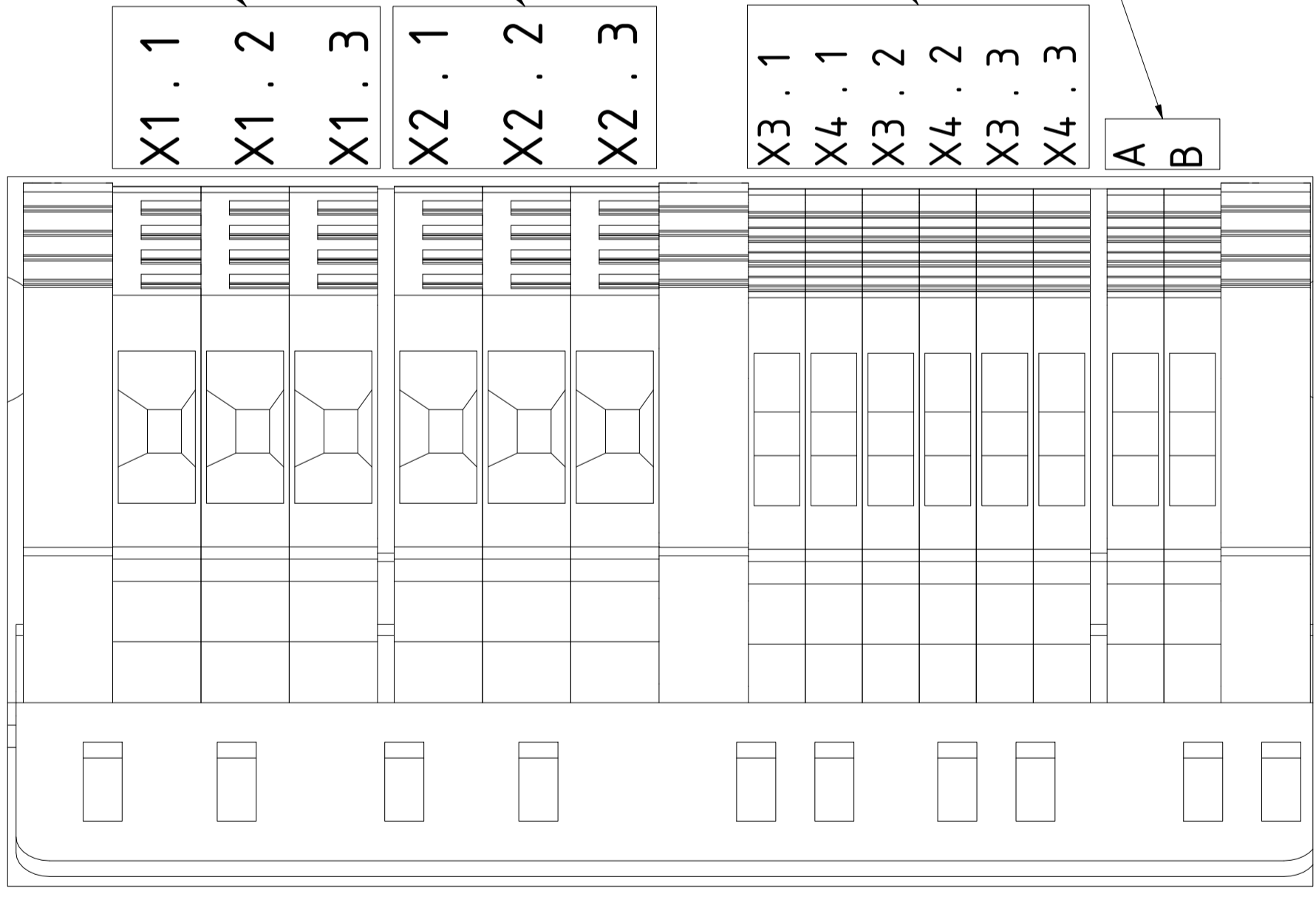


A/B Mains 2,5mm<sup>2</sup>  
Torque: 0.8Nm Tool Slot 0.5x3.0

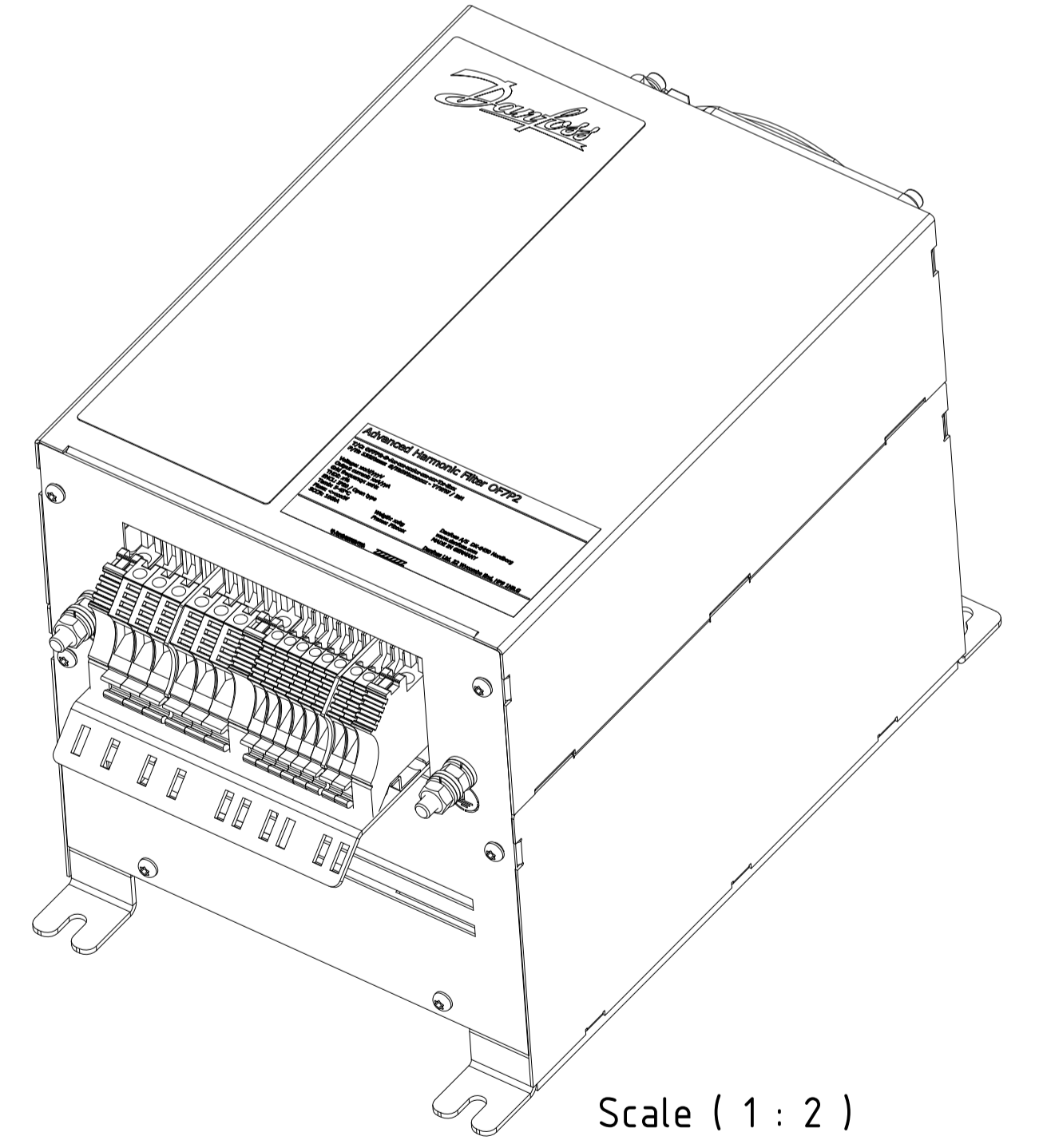
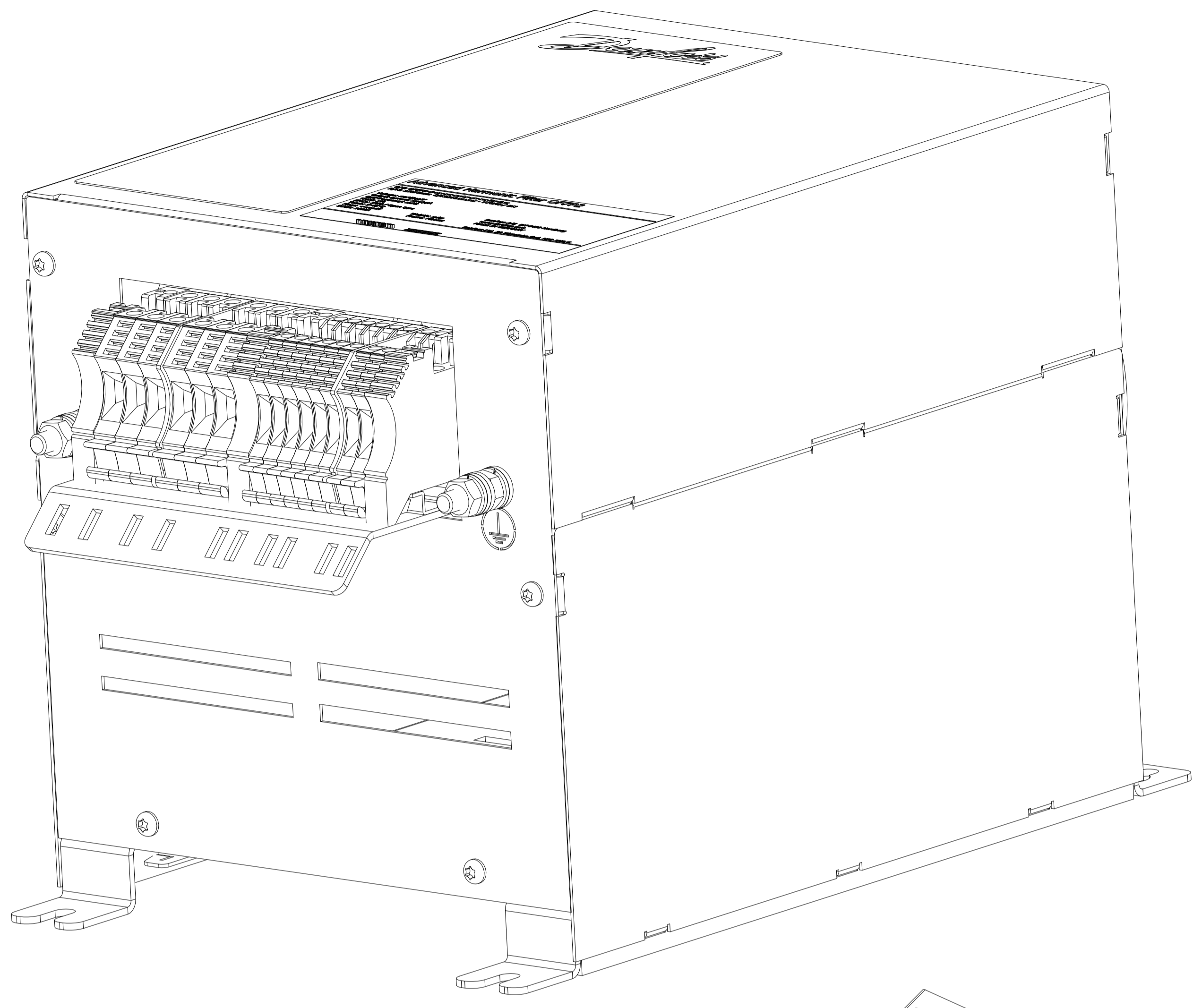
X3/4 Mains 2.5mm<sup>2</sup>  
Torque: 0.8Nm Tool Slot 0.5x3.0

X2 Mains 6mm<sup>2</sup>  
Torque: 1.6Nm Tool Slot 0.8x4.0

X1 Mains 6mm<sup>2</sup>  
Torque: 1.6Nm Tool Slot 0.8x4.0



Scale ( 2 : 1 )



Scale ( 1 : 2 )

ALL DIMENSIONS ARE IN MILLIMETERS (INCH)		Projection	Scale	
			1:1	
Gezeichnet	DATUM	Name		
	2022-01-13	FR		
Kontrolliert			AHF P2AX1i IP20	
Notiz				
			P2AX1i (136b3105)	
			REV	002
			Size A1	
Status	Änderungen	DATUM	Name	Sheet 3 of 4

Product label (95x50mm)

**Advanced Harmonic Filter OF7P2** 

**T/C: OF7P2-S-Ax-xx-xxAx-xx-xx-Tx-Exx**  
**P/N: 132Nzzzz S/N:DNxxxxxx - YYWW / DN**

Voltage: xxV/yyyV  
 Output current: xxA/yyA  
 Grid frequency: xxHz  
 THDI: x%  
 ENCL: IP20 / Open type  
 Tamb: 5-45°C  
 Ploss: <=xxxW  
 SCCR: 100kA

Weight: xxkg  
 Frame: P2xxxx

Danfoss A/S DK-6430 Nordborg  
 www.danfoss.com  
 MADE IN GERMANY

Danfoss Ltd. 22 Wycombe End, HP9 1NB.G

 IND.CONT.EQ. 1HD1  
 ta(max)=45°C  
 LISTED E xx.xx.xx UL Input current: zzzA

Packaging label (90x50mm)

**Advanced Harmonic Filter OF7P2** 

**T/C: OF7P2-S-Ax-xx-xxAx-xxx-xx-Tx-Exx**  
**P/N: 132Nzzzz**  
**S/N:DNxxxxxx - YYWW / DN**

Voltage: xxxV/xxxV  
 Output current: xxA/xxA  
 Grid frequency: xxHz  
 THDI: x%

Tstorage: -40 - 70°C  
 ENCL: IP20 / Open type  
 Weight: xxkg  
 Frame: P2xxxx

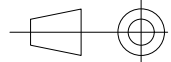
MADE IN GERMANY

Danfoss A/S  
 DK-6430 Nordborg  
 www.danfoss.com

Danfoss Ltd.  
 22 Wycombe End,  
 HP9 1NB,GB

OF7P2	Identification	Voltage	Output Current	Input Current	Grid frequency	THDI	Ploss	Weight	Frame	UL mark	Revcon part number
P/N	T/C	[V]	[A]	[A]	[Hz]	[%]	[W]	[kg]	-	-	
132N6491	OF7P2-S-AN-46-10A0-060-05-TI-E20	460/400	10/11,2	10/10	60	5	163	18	X1	x	25040020
132N6785	OF7P2-S-AN-46-10A0-060-10-TI-E20	460/400	10/11,2	10/10	60	10	99	13.5	X1	x	25030020
132N6802	OF7P2-S-AN-40-11A2-050-05-TI-E20	-/400	-/11,2	-/10	50	5	142	18	X1	-	2504000
132N6818	OF7P2-S-AN-40-11A2-050-10-TI-E20	-/400	-/11,2	-/10	50	10	86	13.5	X1	-	2503000

ALL DIMENSIONS ARE IN MILLIMETERS [INCH]				Projection 	Scale 1,5:1	
				DATUM	Name	AHF P2AX1i IP20
				Gezeichnet 2022-01-13	FR	
				Kontrolliert		
				Norm		
						P2AX1i (136b3105)
Status	Änderungen	DATUM	Name			REV 002 Size A3
Sheet 4 of 4						