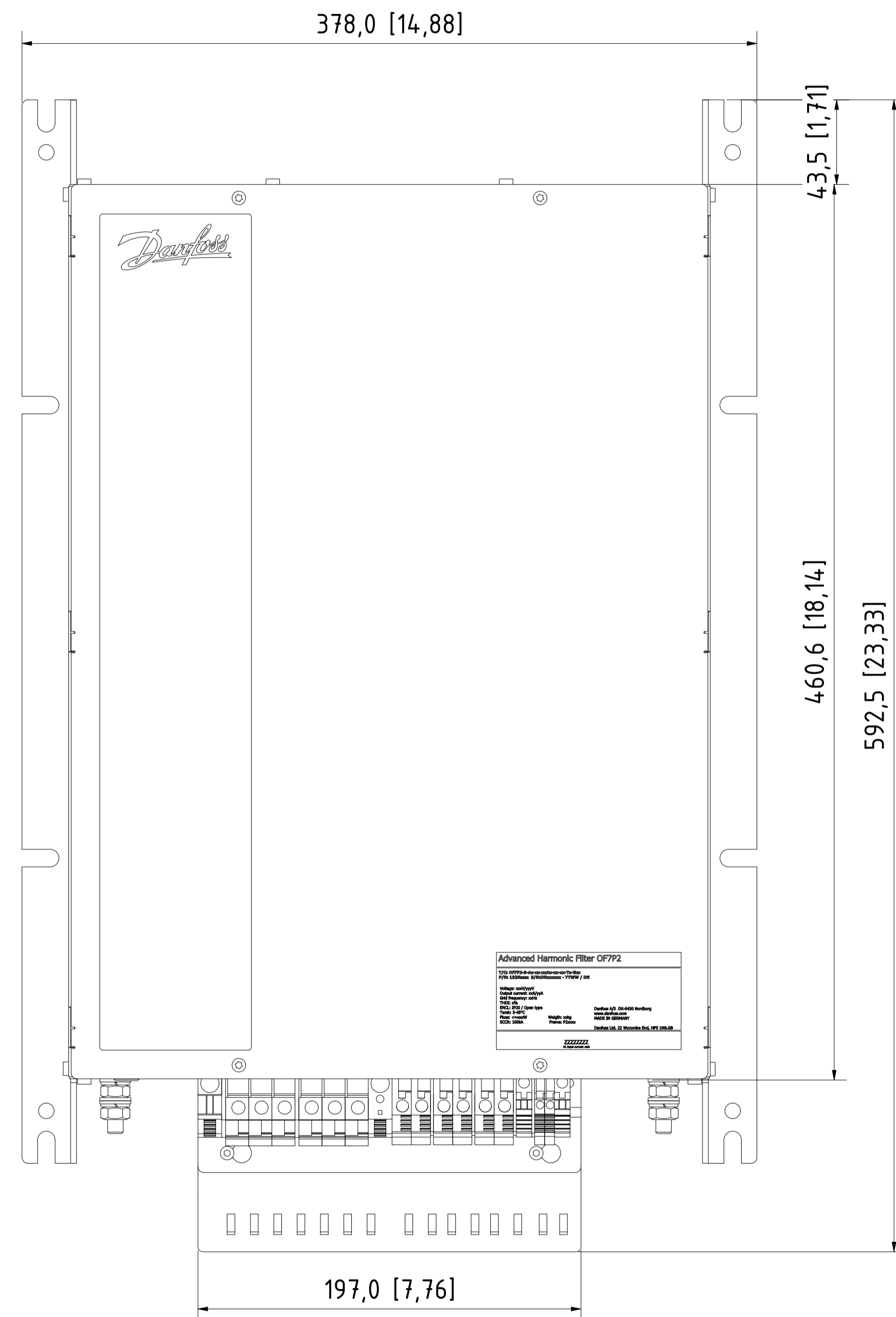
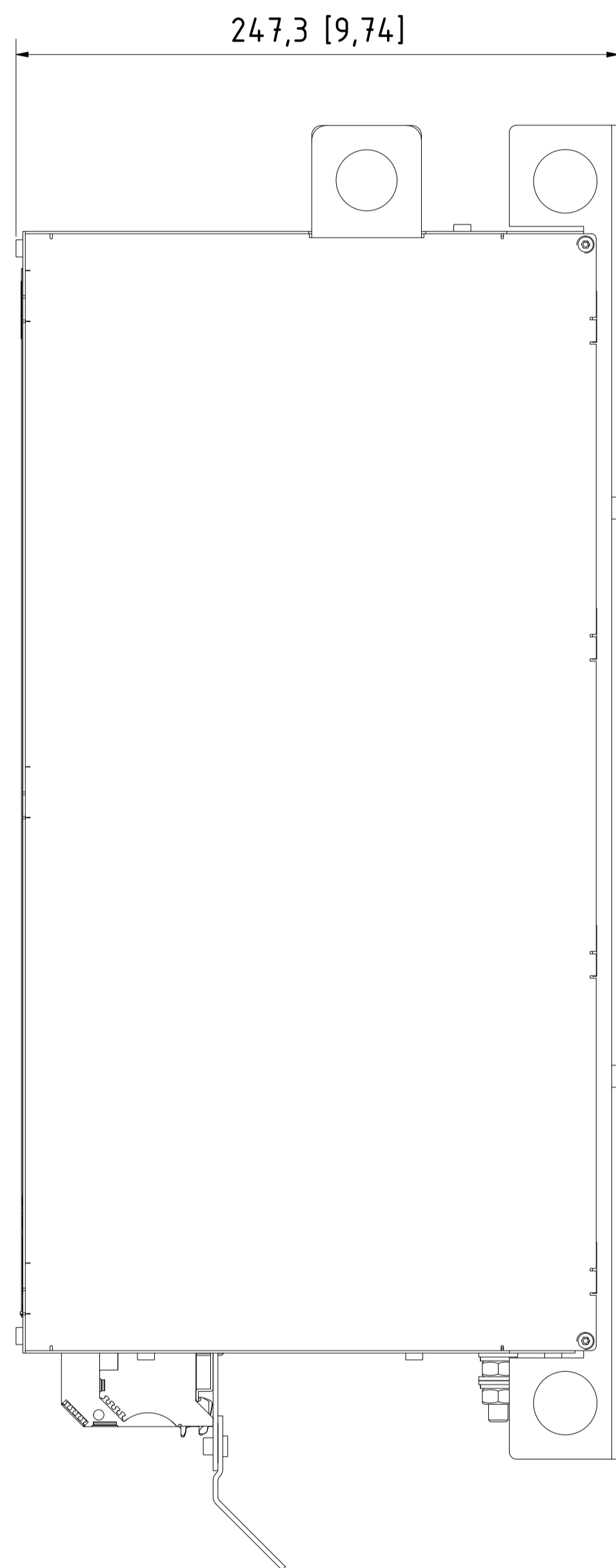
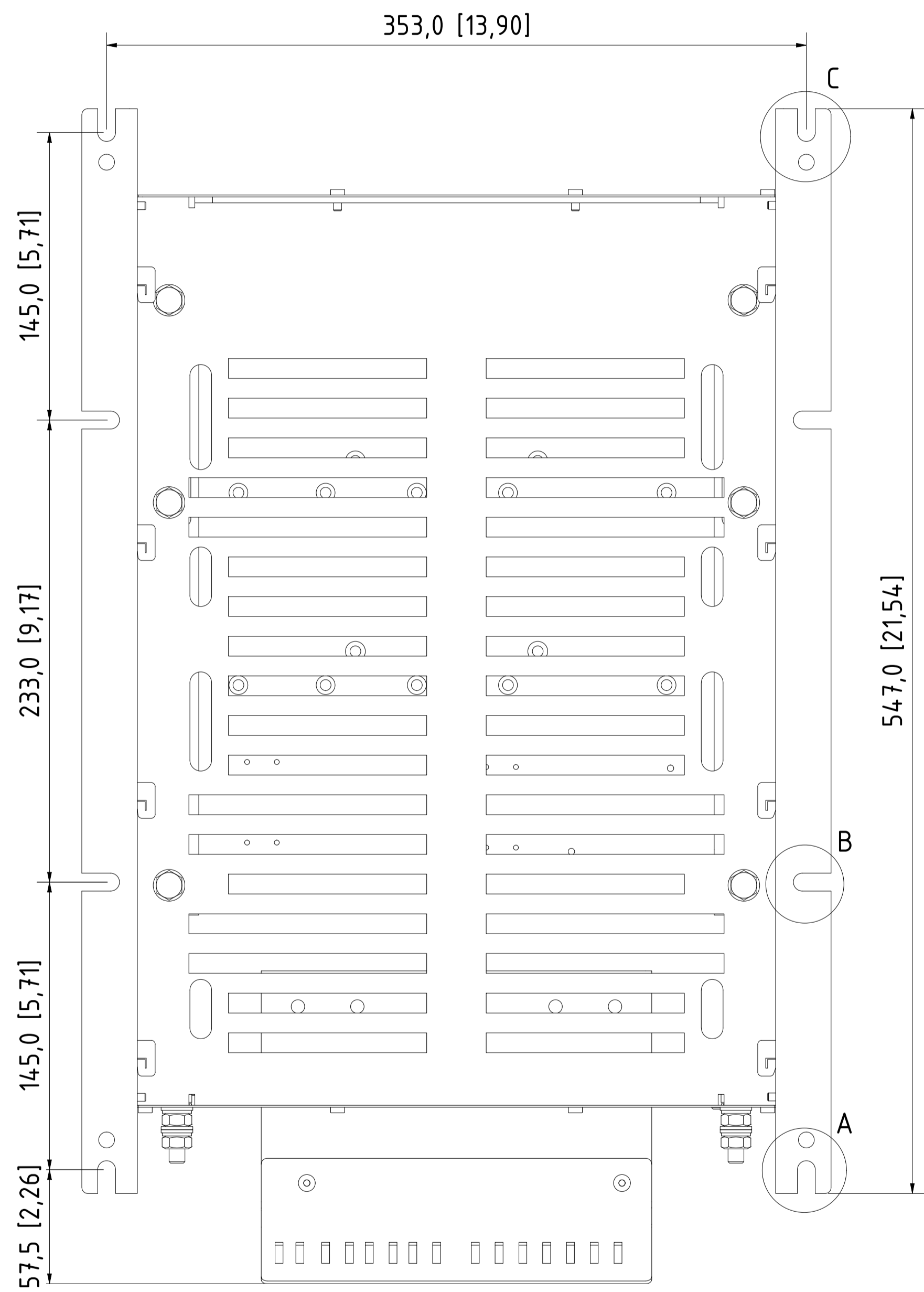
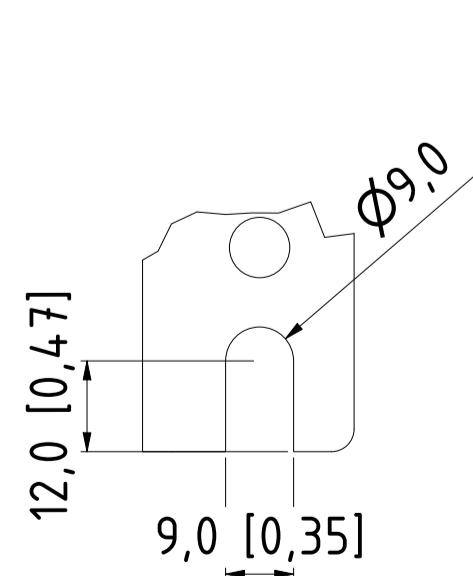


12 11 10 9 8 7 6 5 4 3 2 1

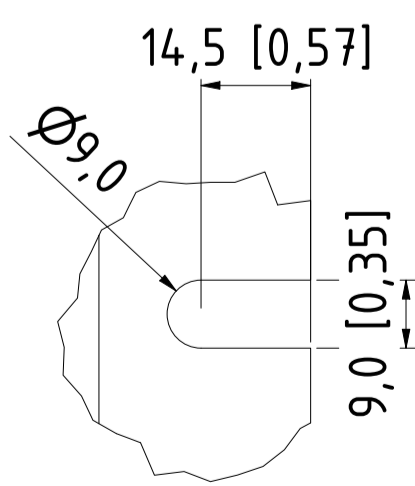
Type	Value
IP Class	IP20
UL Type	Open
Enclosure Colour	RAL 7001
Frame Size	P3AX3i



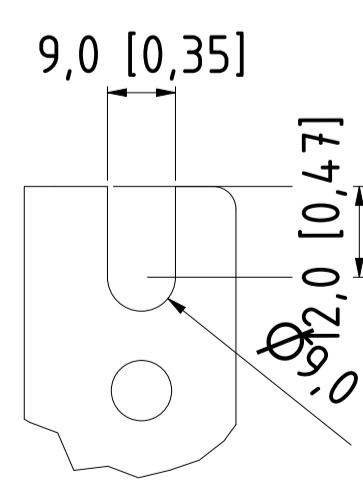
Tolerances					
Dimension [mm]	<250	250>x>800	>800	parts in series	folded parts
Tolerance [mm]	+/-1	+/-2.5	+/-4	+/-2.5	+/-2.5



A (1 : 1)



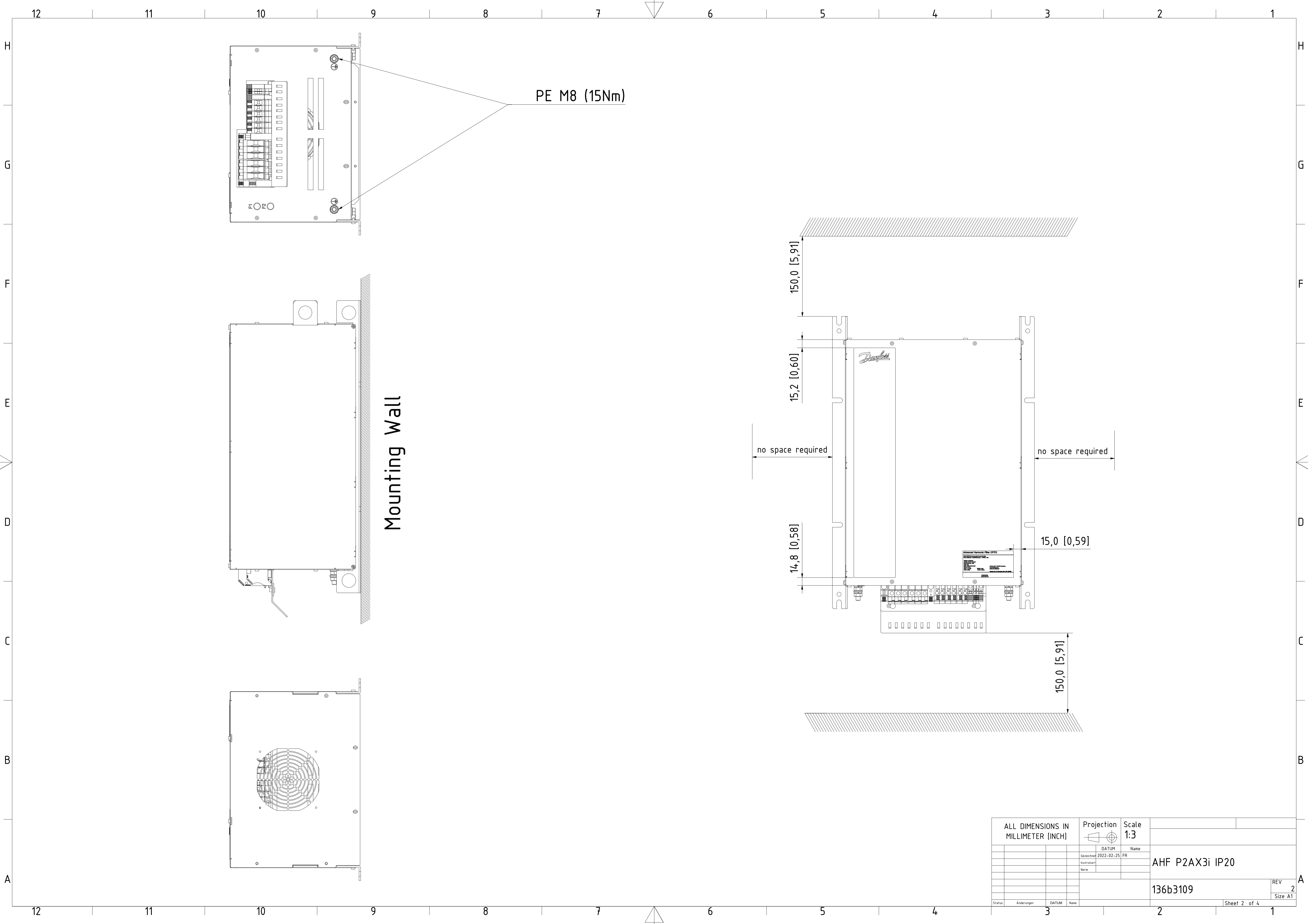
B (1 : 1)



C (1 : 1)

ALL DIMENSIONS IN MILLIMETER (INCH)		Projection	Scale 1:2	
Gezeichnet	DATUM	Name		
Kontrolliert	2022-02-25	FR	AHF P2AX3i IP20	
Name			136b3109	
Status	Änderungen	DATUM	Name	REV 2
				Size A1
				Sheet 1 of 4

12 11 10 9 8 7 6 5 4 3 2 1



PE M8 (15Nm)

Mounting Wall

150,0 [5,91]

15,2 [0,60]

no space required

14,8 [0,58]

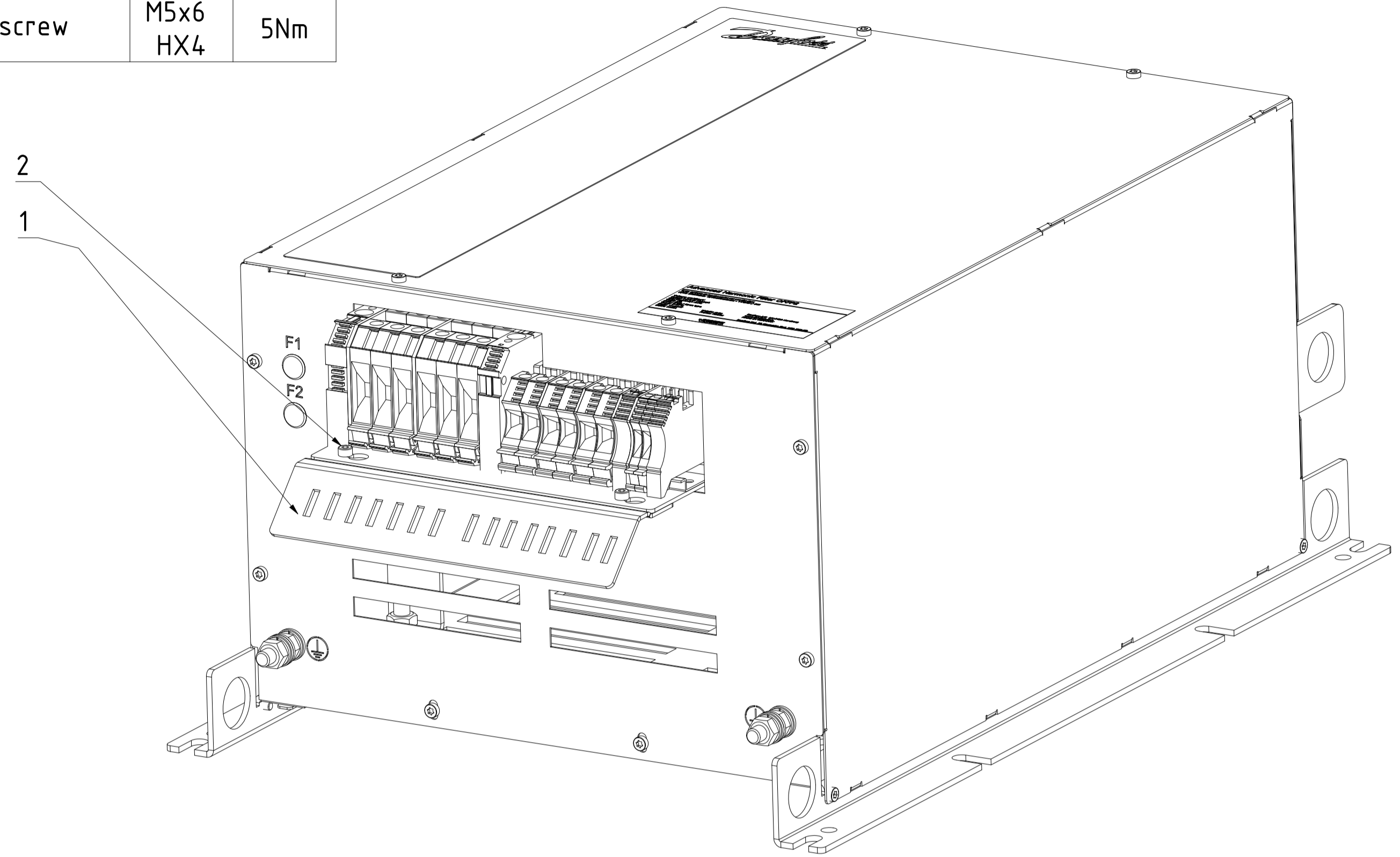
15,0 [0,59]

150,0 [5,91]

no space required

ALL DIMENSIONS IN MILLIMETER (INCH)		Projection	Scale		
			1:3		
DATUM	Name				
Gezeichnet	2022-02-25	FR	AHF P2AX3i IP20		
Kontrolliert					
Notiz					
			136b3109	REV 2	Size A1
Status	Änderungen	DATUM	Name	Sheet 2 of 4	

Included Accessories (premounted)				
Pos.	Pcs.	Description	Type	Torque
1	1	strain relief	-	-
2	4	screw	M5x6 HX4	5Nm

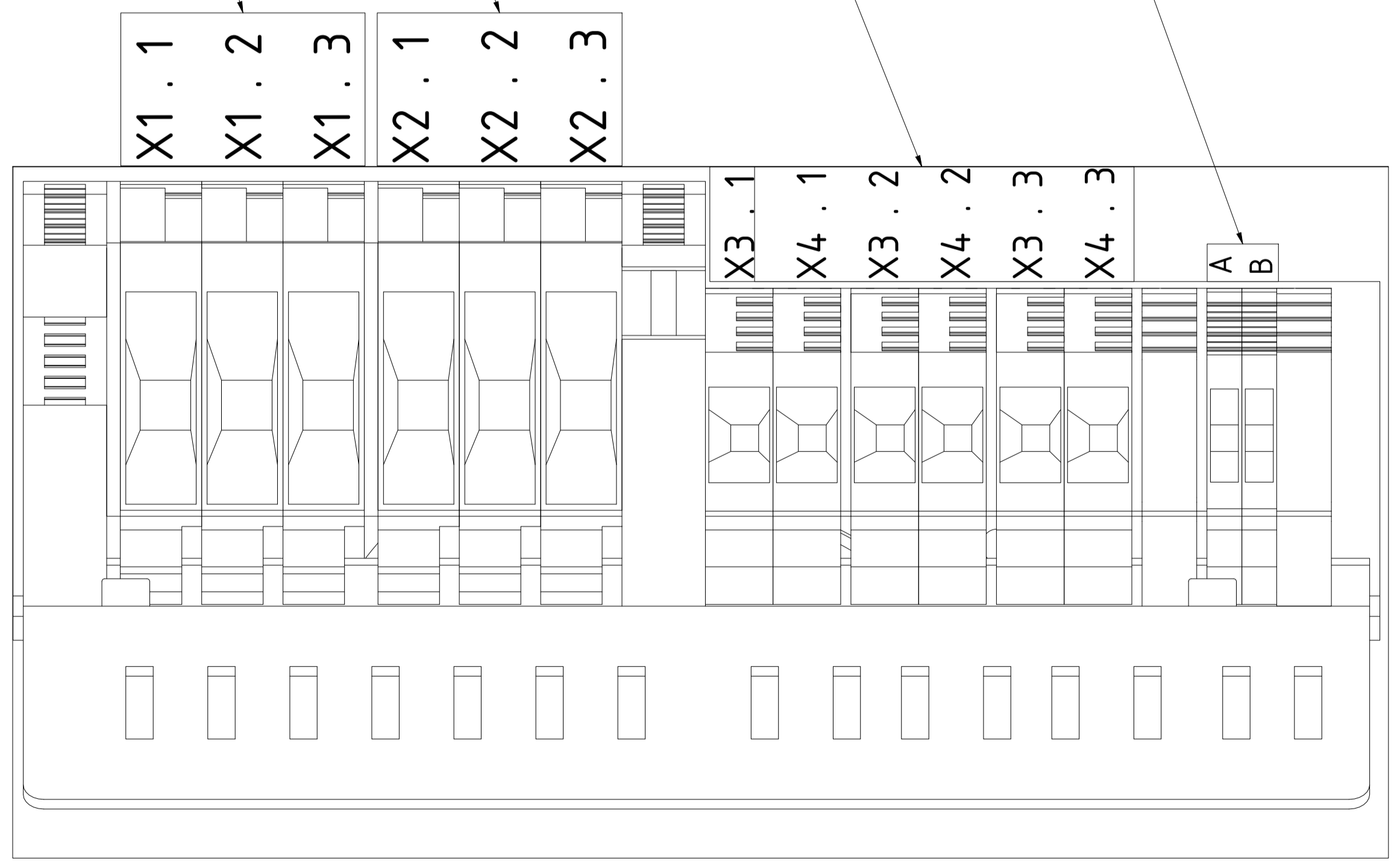


A/B Temperature 2,5mm²
Torque: 0.8Nm Tool Slot 0.5x3.0

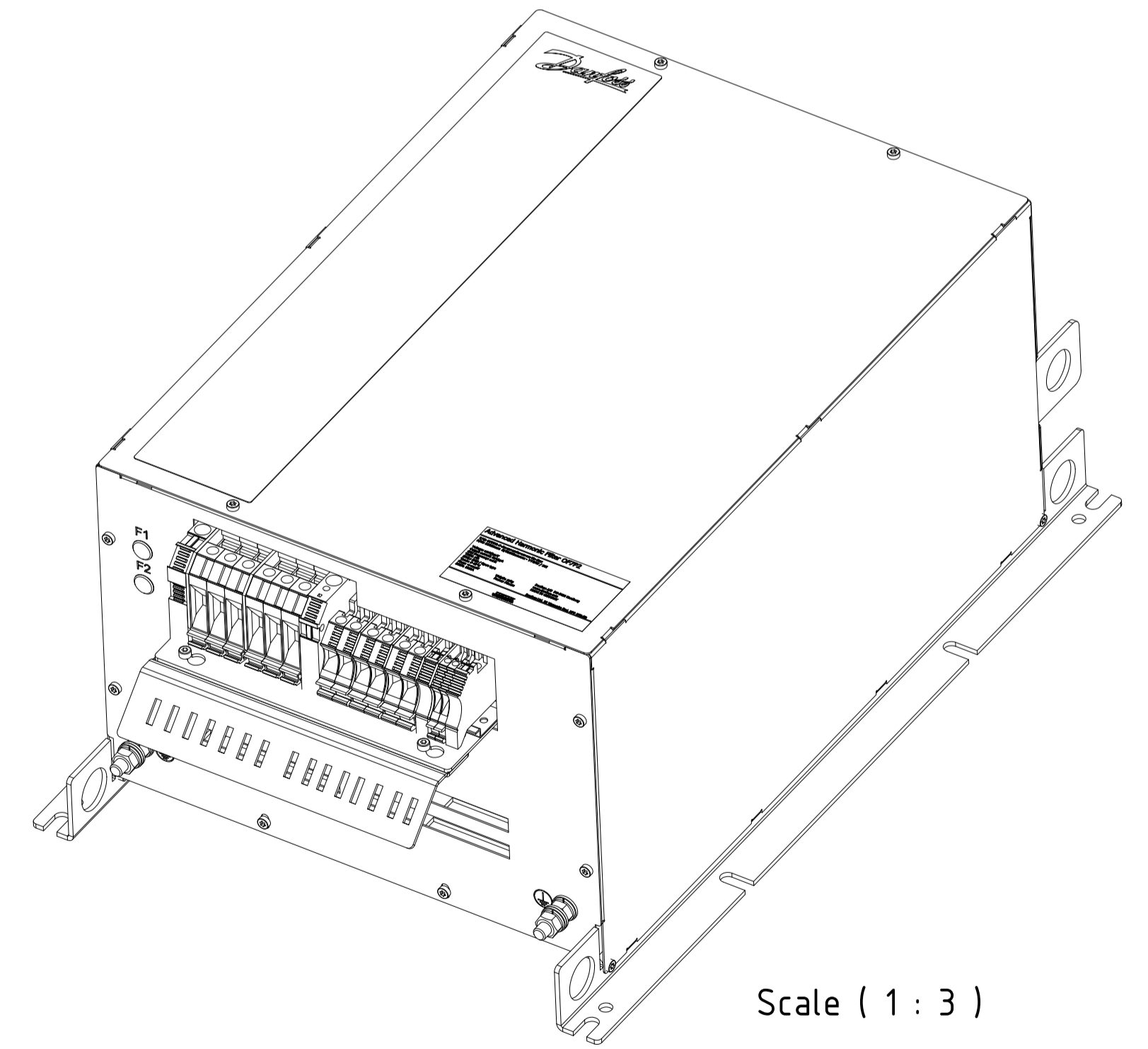
X3/4 Capacitor Disconnect 10mm²
Torque: 2Nm Tool Slot 0.8x4.0

X2 Drive 16mm²
Torque: 3.5Nm Tool Slot 0.8x4.0

X1 Mains 16mm²
Torque: 3.5Nm Tool Slot 0.8x4.0



Scale (1,5 : 1)



ALL DIMENSIONS IN MILLIMETER (INCH)		Projection	Scale	
			1:2	
		DATUM	Name	
		Gezeichnet 2022-02-25	FR	
		Kontrolliert		AHF P2AX3i IP20
		None		
				136b3109
Status	Änderungen	DATUM	Name	REV 2
				Size A1
			2	Sheet 3 of 4

Product Label (95x50mm)

Advanced Harmonic Filter OF7P2 

T/C: OF7P2-S-Ax-xx-xxAx-xx-xx-Tx-Exx
P/N: 132Nzzzz S/N:DNxxxxxx - YYWW / DN



Voltage: xxxV/yyyV
 Output current: xxA/yyA
 Grid frequency: xxHz
 THDI: x%
 ENCL: IP20 / Open type
 Tamb: 5-45°C
 Ploss: <=xxxW
 SCCR: 100kA

Weight: xxkg
 Frame: P2xxxx

Danfoss A/S DK-6430 Nordborg
 www.danfoss.com
 MADE IN GERMANY

Danfoss Ltd. 22 Wycombe End, HP9 1NB.GB

 IND.CONT.EQ. 1HD1
 ta(max)=45°C
 LISTED E xx xx xx

 ZZZZZZZZ
 UL Input current: zzzA

Product Label (95x50mm)

Advanced Harmonic Filter OF7P2 

T/C: OF7P2-S-Ax-xx-xxAx-xxx-xx-Tx-Exx
P/N: 132Nzzzzz
S/N:DNxxxxxx - YYWW / DN

Voltage: xxxV/xxxV
 Output current: xxA/xxA
 Grid frequency: xxHz
 THDI: x%

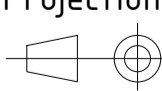
Tstorage: -40 - 70°C
 ENCL: IP20 / Open type
 Weigth: xxkg
 Frame: P2xxxx

Danfoss A/S
 DK-6430 Nordborg
 www.danfoss.com

Danfoss Ltd.
 22 Wycombe End,
 HP9 1NB,GB

OF7P2	Identification	Voltage	Output Current	Input Current	Grid frequency	THDI	Ploss	Weight	Frame	UL mark	Revcon part number
P/N	T/C	[V]	[A]	[A]	[Hz]	[%]	[W]	[kg]	-	-	-
132N6498	OF7P2-S-AF-46-31A0-060-05-T1-E20	460/400	31/36	31/34	60	5	448	52	X3	x	25040024
132N6499	OF7P2-S-AF-46-37A0-060-05-T1-E20	460/400	37/43	36/40	60	5	474	53	X3	x	25040025
132N6500	OF7P2-S-AF-46-50A0-060-05-T1-E20	460/400	50/57	48/55	60	5	543	58	X3	x	25040026
132N6789	OF7P2-S-AF-46-31A0-060-10-T1-E20	460/400	31/36	31/34	60	10	301	33	X3	x	25030024
132N6790	OF7P2-S-AF-46-37A0-060-10-T1-E20	460/400	37/43	36/40	60	10	329	37	X3	x	25030025
132N6791	OF7P2-S-AF-46-50A0-060-10-T1-E20	460/400	50/57	48/55	60	10	389	39	X3	x	25030026
132N6806	OF7P2-S-AF-40-36A0-050-05-T1-E20	-/400	-/36	-/34	50	5	425	52	X3	-	25040004
132N6807	OF7P2-S-AF-40-43A0-050-05-T1-E20	-/400	-/43	-/40	50	5	457	53	X3	-	25040005
132N6808	OF7P2-S-AF-40-57A0-050-05-T1-E20	-/400	-/57	-/55	50	5	541	58	X3	-	25040006
132N6822	OF7P2-S-AF-40-36A0-050-10-T1-E20	-/400	-/36	-/34	50	10	285	33	X3	-	25030004
132N6823	OF7P2-S-AF-40-43A0-050-10-T1-E20	-/400	-/43	-/40	50	10	317	37	X3	-	25030005
132N6824	OF7P2-S-AF-40-57A0-050-10-T1-E20	-/400	-/57	-/55	50	10	387	39	X3	-	25030006

ALL DIMENSIONS IN MILLIMETER (INCH)		Projection 	Scale 3:1
Gezeichnet	DATUM	Name	
Kontrolliert	2022-02-25	FR	
None			AHF P2AX3i IP20
			136b3109
Status	Änderungen	DATUM	Name
			REV 2
			Size AT
			Sheet 4 of 4