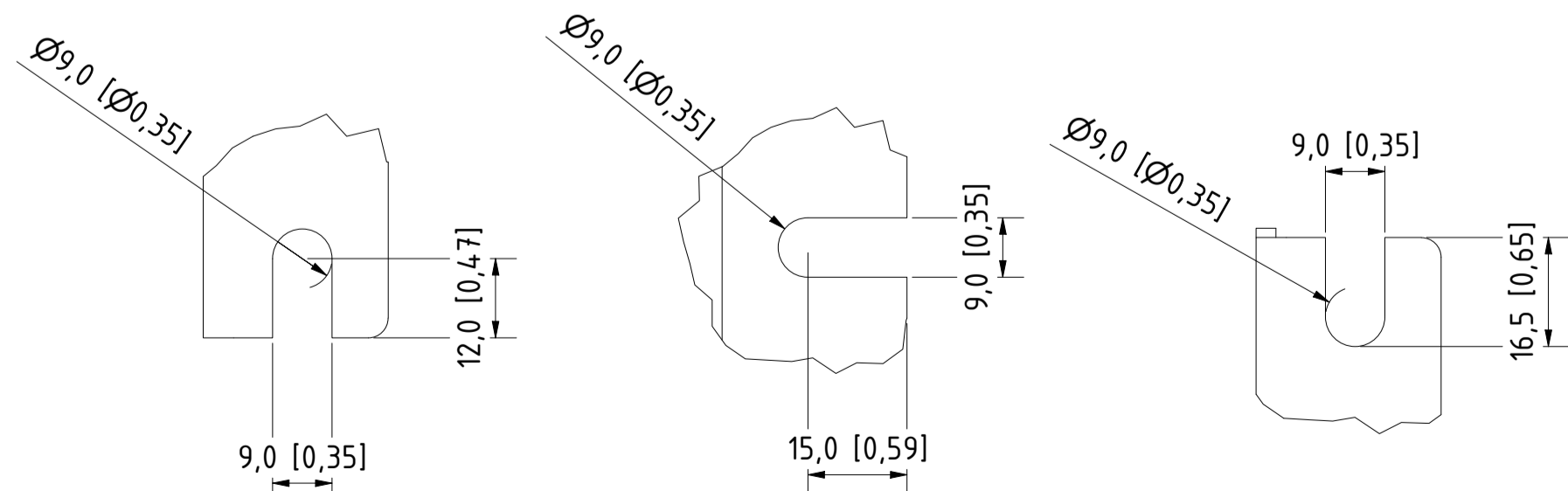
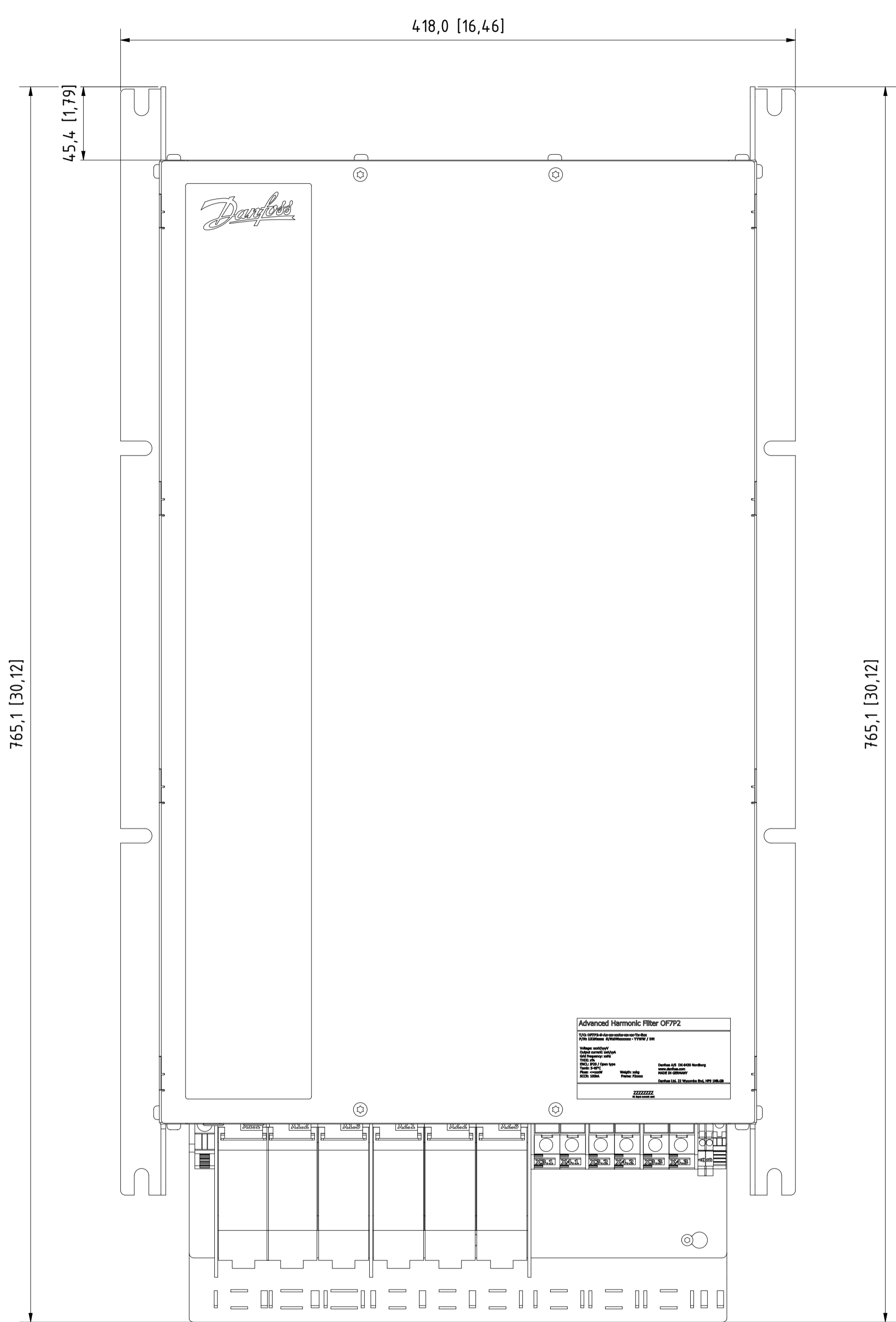
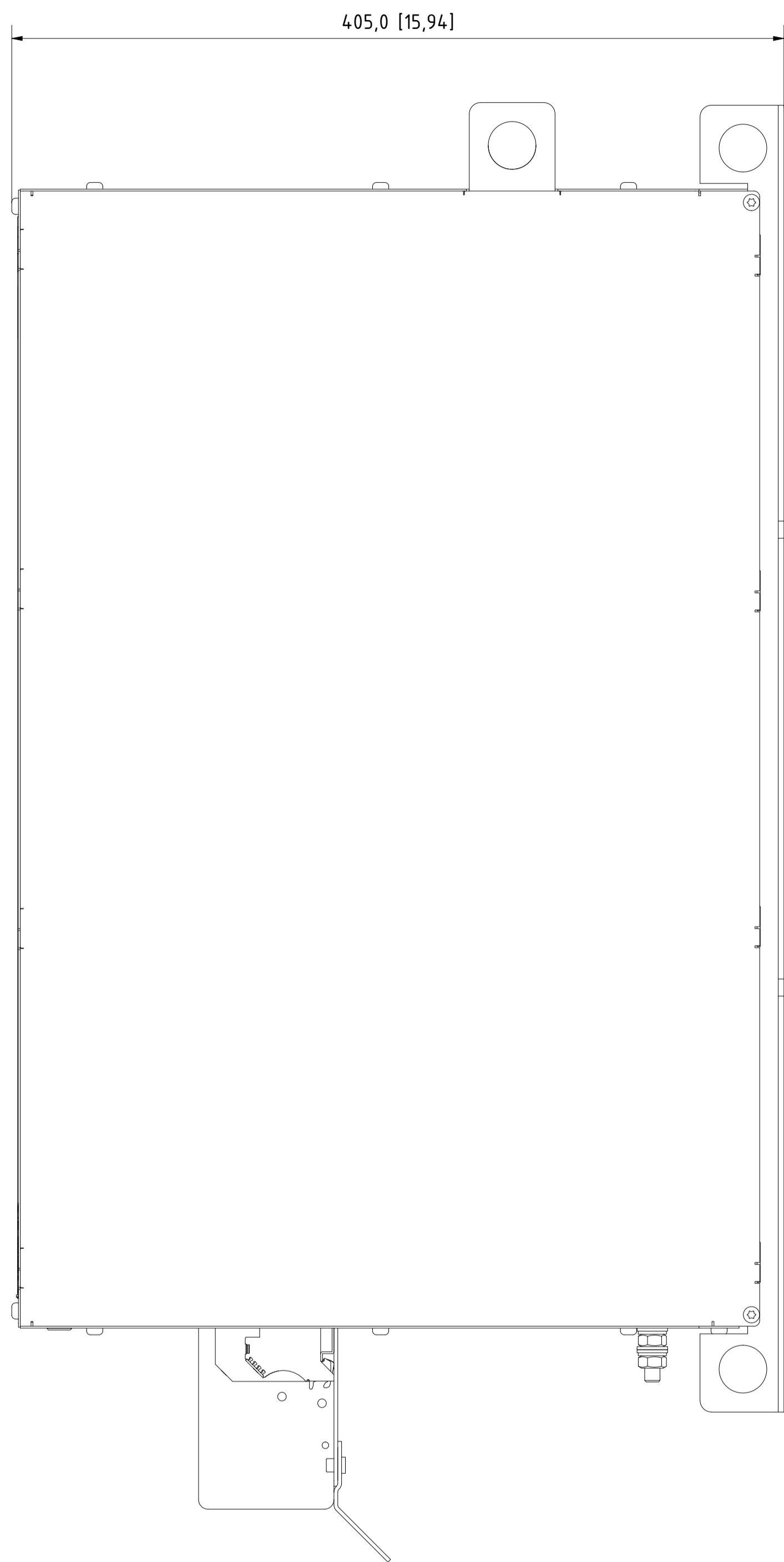
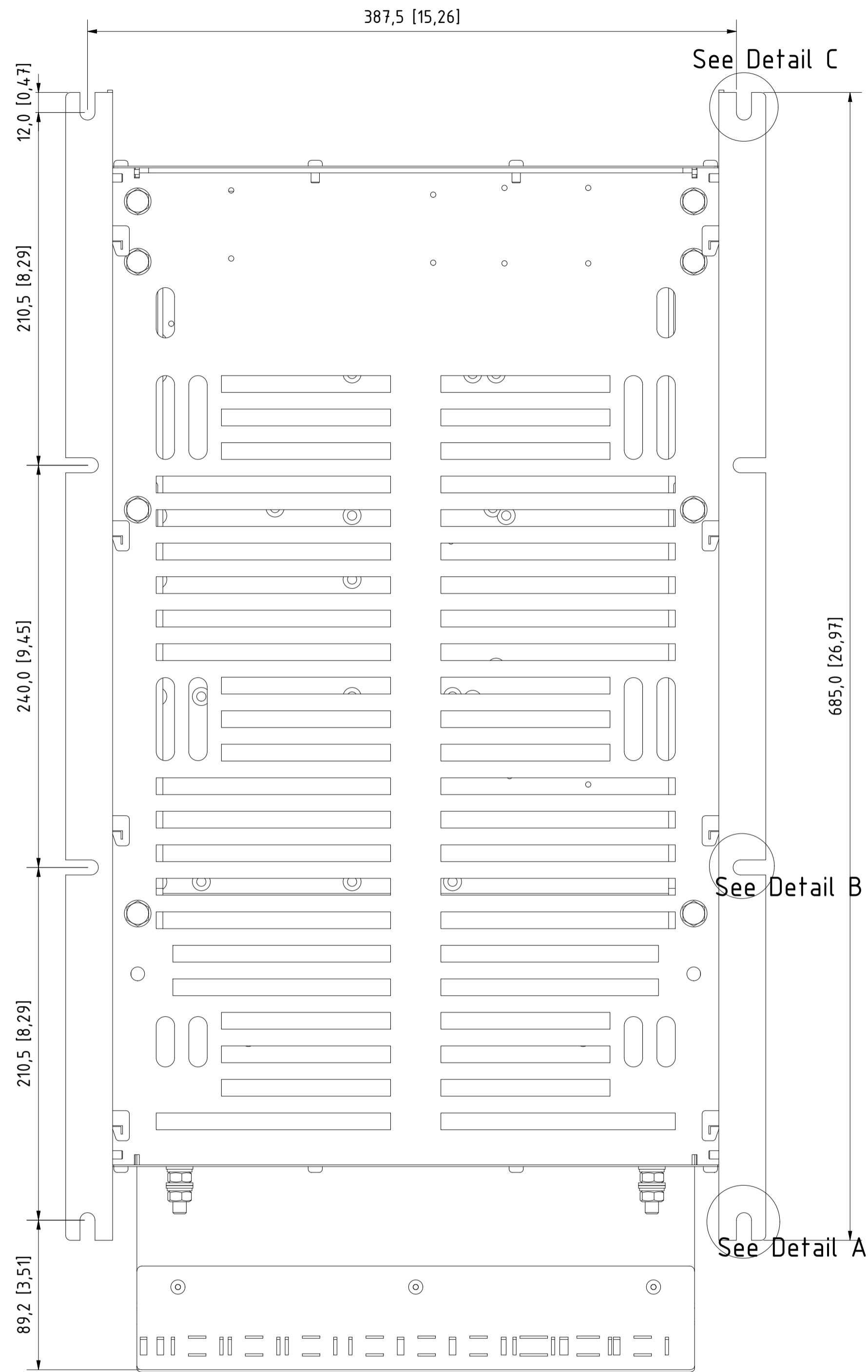


12 11 10 9 8 7 6 5 4 3 2 1

Type	Value
IP Class	IP20
UL Type	Open
Enclosure Colour	RAL 7001
Frame Size	P2AX6i

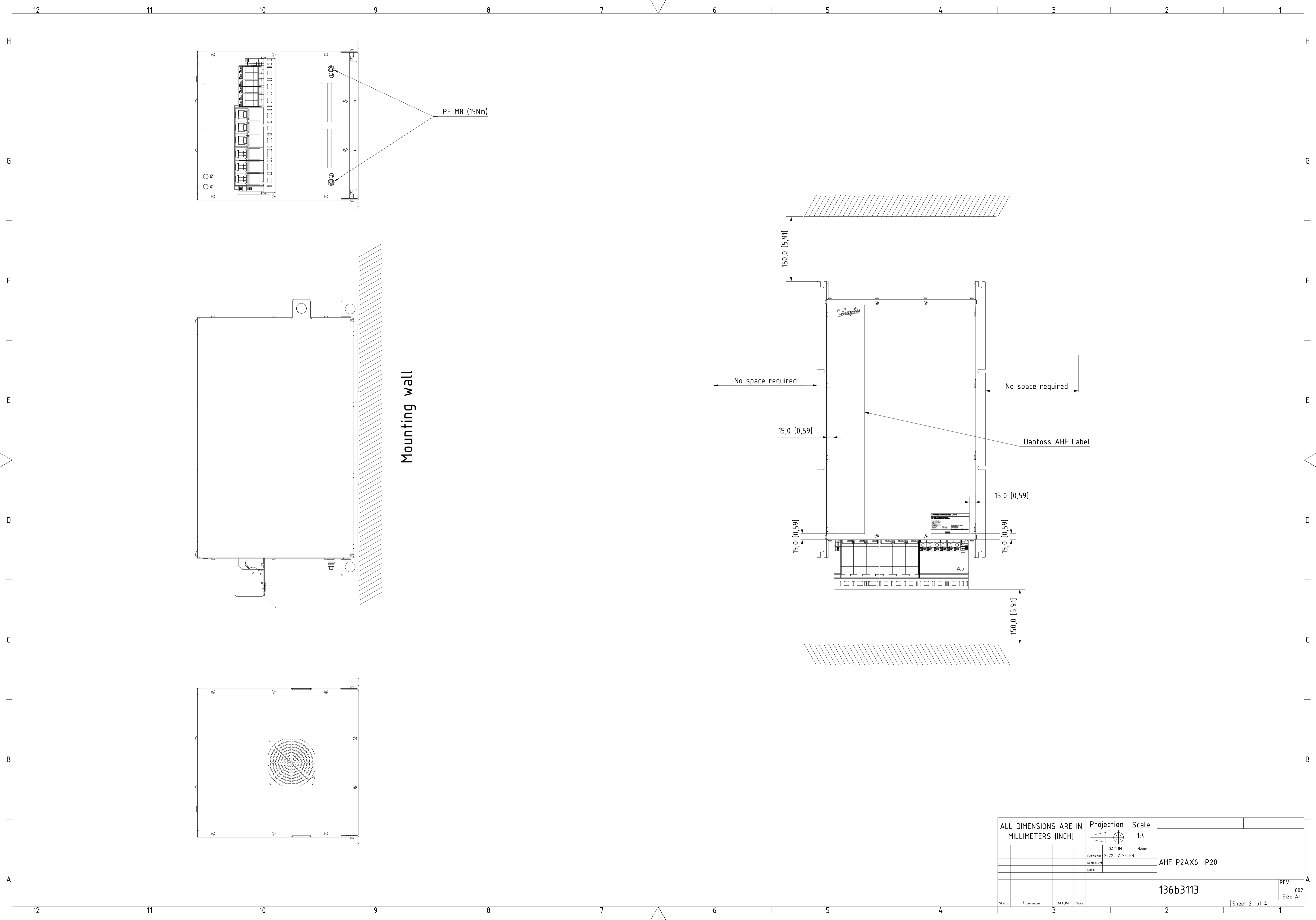


A (1:1) B (1:1) C (1:1)

Dimension [mm]	Tolerances				
	<250	250>x>800	>800	parts in series	folded parts
Tolerance [mm]	+/-1	+/-2.5	+/-4	+/-2.5	+/-2.5

ALL DIMENSIONS ARE IN MILLIMETERS (INCH)		Projection	Scale 1:2.2
		DATUM	Name
		Gezeichnet 2022-02-25 FR	
		Kontrolliert	AHF P2AX6i IP20
		None	
			136b3113
			REV 002
			Size A1
Status	Änderungen	DATUM	Name
		3	
			Sheet 1 of 4

12 11 10 9 8 7 6 5 4 3 2 1



ALL DIMENSIONS ARE IN MILLIMETERS (INCH)		Projection	Scale	
			1:4	
Gezeichnet	DATUM	Name		
Kontrolliert	2022-02-25	FR		
Norm			AHF P2AX6i IP20	
			136b3113	REV 002
Status	Änderungen	DATUM	Name	Sheet 2 of 4
		3		1

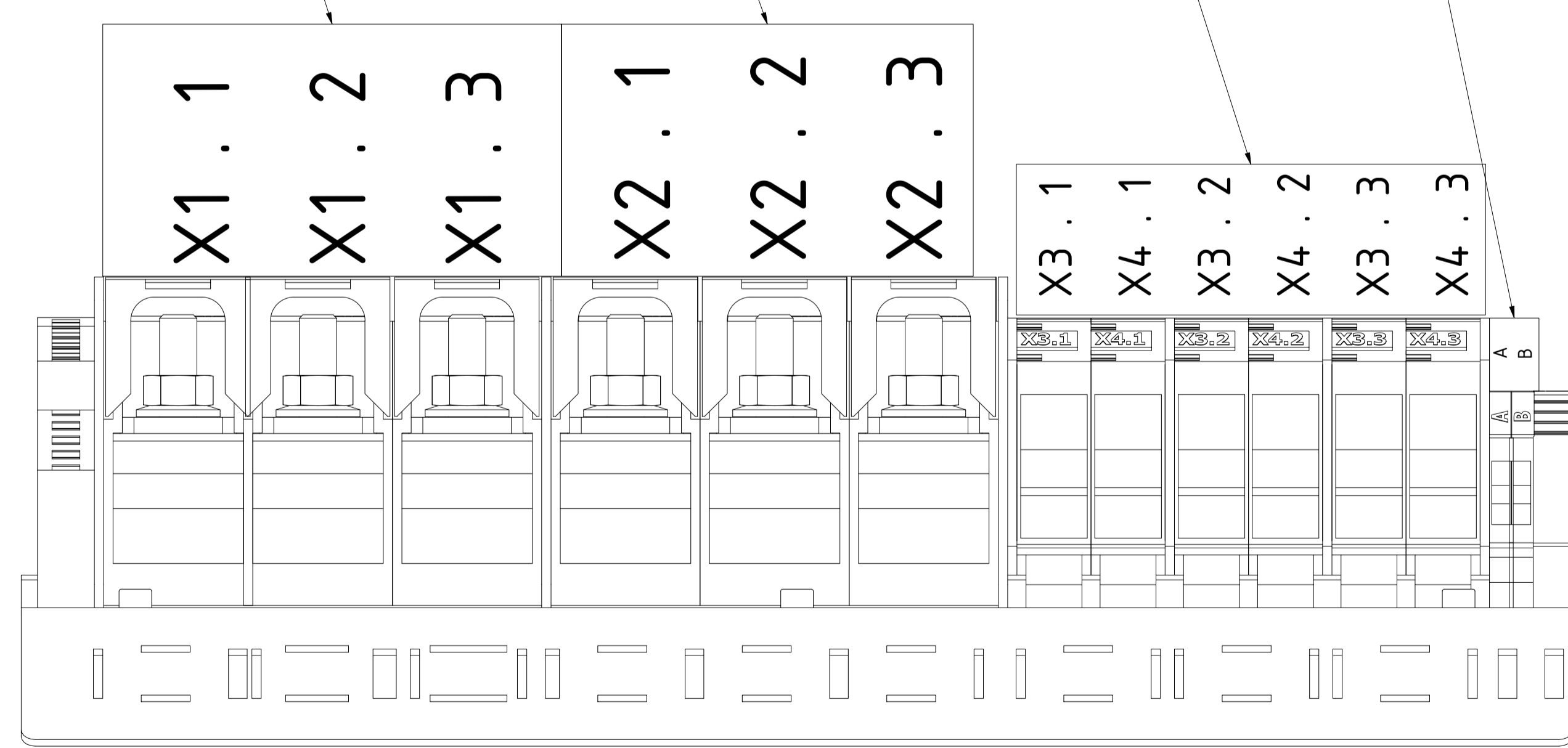
Included Accessories (premounted)				
Pos.	Pcs.	Description	Type	Torque
1	1	strain relief	-	-
2	4	screw	M5x6 HX4	5Nm

A/B Temperature 2,5mm<sup>2</sup>  
Torque: 0.8Nm Tool Slot 0.5x3.0

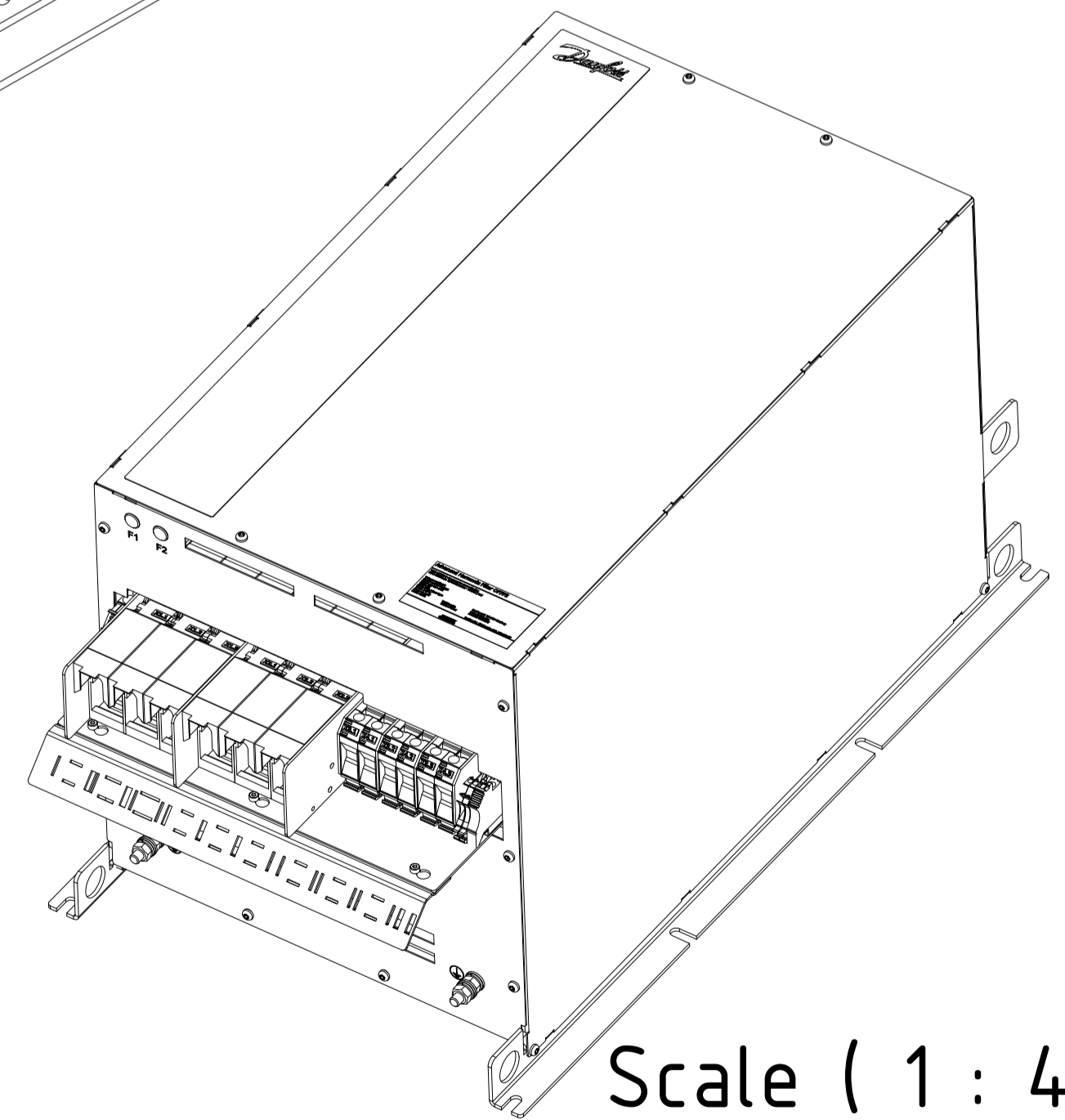
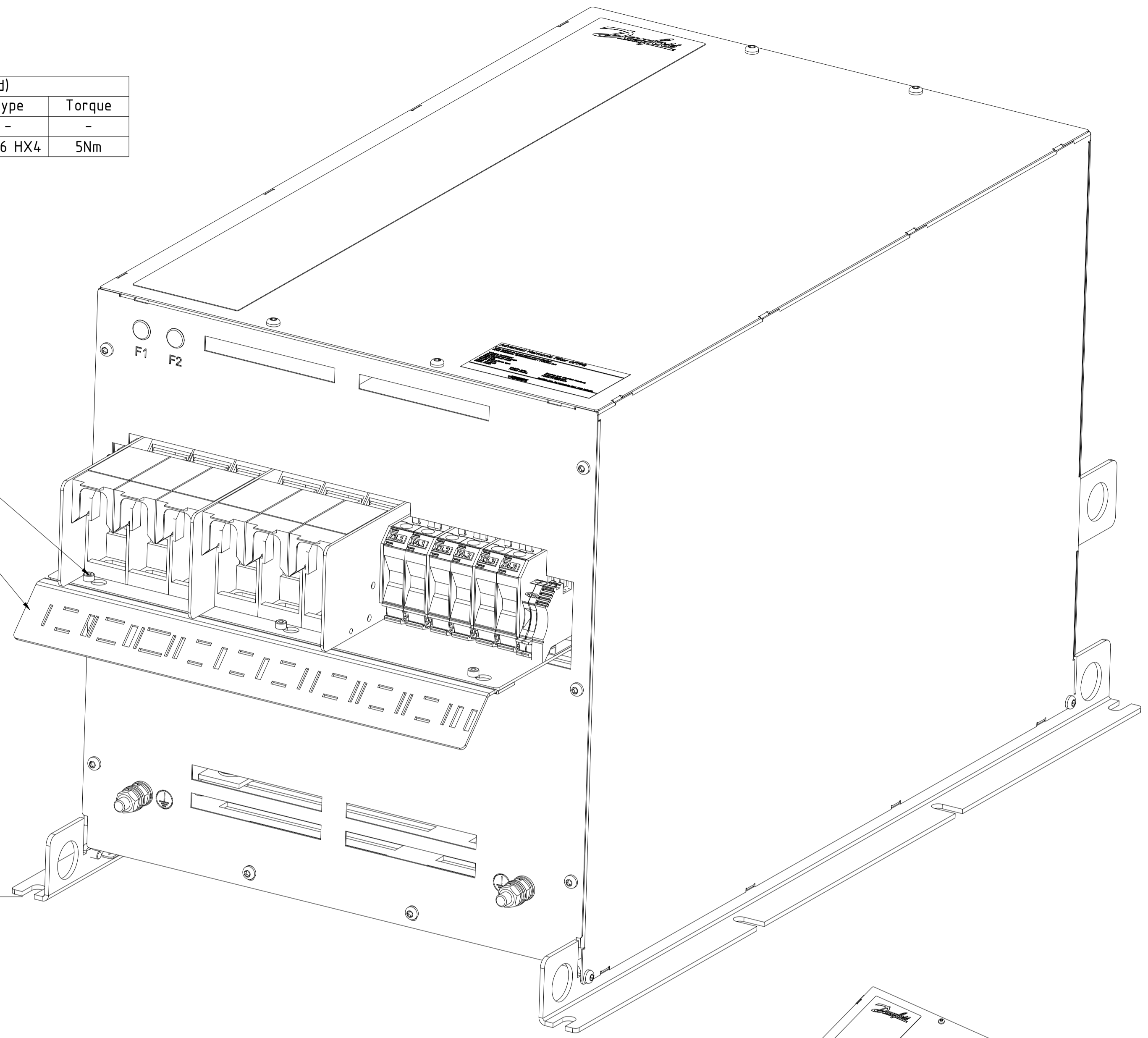
X3/4 Capacitor Disconnect 35mm<sup>2</sup>  
Torque: 4Nm Tool Slot 1.2x6.5

X2 Drive 70mm<sup>2</sup>  
Torque: 10Nm Tool S6

X1 Mains 70mm<sup>2</sup>  
Torque: 10Nm Tool S6



Scale ( 1 : 1 )



Scale ( 1 : 4.5 )

ALL DIMENSIONS ARE IN MILLIMETERS (INCH)		Projection	Scale	
			1:2	
Gezeichnet	DATUM	Name		
Kontrolliert	2022-02-25	FR		
None			AHF P2AX6i IP20	
			136b3113	REV 002
Status	Änderungen	DATUM	Name	Size A1
				Sheet 3 of 4

Product Label (95x50mm)

**Advanced Harmonic Filter OF7P2**

---

**T/C: OF7P2-S-Ax-xx-xxAx-xx-xx-Tx-Exx**  
**P/N: 132Nzzzz S/N:DNxxxxxx - YYWW / DN**

Voltage: xxxV/yyyV  
 Output current: xxA/yyA  
 Grid frequency: xxHz  
 THDI: x%  
 ENCL: IP20 / Open type  
 Tamb: 5-45°C  
 Ploss: <=xxxW  
 SCCR: 100kA

Danfoss A/S DK-6430 Nordborg  
 www.danfoss.com  
 MADE IN GERMANY

Danfoss Ltd. 22 Wycombe End, HP9 1NB.GB

---

IND.CONT.EQ. 1HD1  
 ta(max)=45°C  
 LISTED E xx xx xx

UL Input current: zzzA

Packaging Label (90x50mm)

**Advanced Harmonic Filter OF7P2**

MADE IN GERMANY

---

**T/C: OF7P2-S-Ax-xx-xxAx-xxx-xx-Tx-Exx**  
**P/N: 132Nzzzz**  
**S/N:DNxxxxxx - YYWW / DN**

Voltage: xxxV/xxxV  
 Output current: xxA/xxA  
 Grid frequency: xxHz  
 THDI: x%

Tstorage: -40 - 70°C  
 ENCL: IP20 / Open type  
 Weigth: xxkg  
 Frame: P2xxxx

901234123457

Danfoss A/S  
 DK-6430 Nordborg  
 www.danfoss.com

---

Danfoss Ltd.  
 22 Wycombe End,  
 HP9 1NB,GB

OF7P2	Identification	Voltage	Output Current	Input Current	Grid frequency	THDI	Ploss	Weight	Frame	UL mark	Revcon part number
P/N	T/C	[V]	[A]	[A]	[Hz]	[%]	[W]	[kg]	-	-	ZZZZZZZZ
132N6796	OF7P2-S-AF-46-160A-060-10-T1-E20	460/400	160/171	154/171	60	10	928	85	X6	x	25030031
132N6798	OF7P2-S-AF-46-189A-060-10-T1-E20	460/400	189/204	183/204	60	10	935	102	X6	x	25030032
132N6829	OF7P2-S-AF-40-171A-050-10-T1-E20	-/400	-/171	-/171	50	10	895	85	X6	-	25030011
132N6831	OF7P2-S-AF-40-204A-050-10-T1-E20	-/400	-/204	-/204	50	10	905	102	X6	-	25030012

ALL DIMENSIONS ARE IN MILLIMETERS (INCH)		Projection	Scale 3:1
Gezeichnet 2022-02-25 FR		Name	
Kontrolliert		Name	
Name		Name	
		AHF P2AX6i IP20	
		136b3113	
Status Änderungen DATUM Name		REV 002 Size A1	
3		2 Sheet 4 of 4 1	