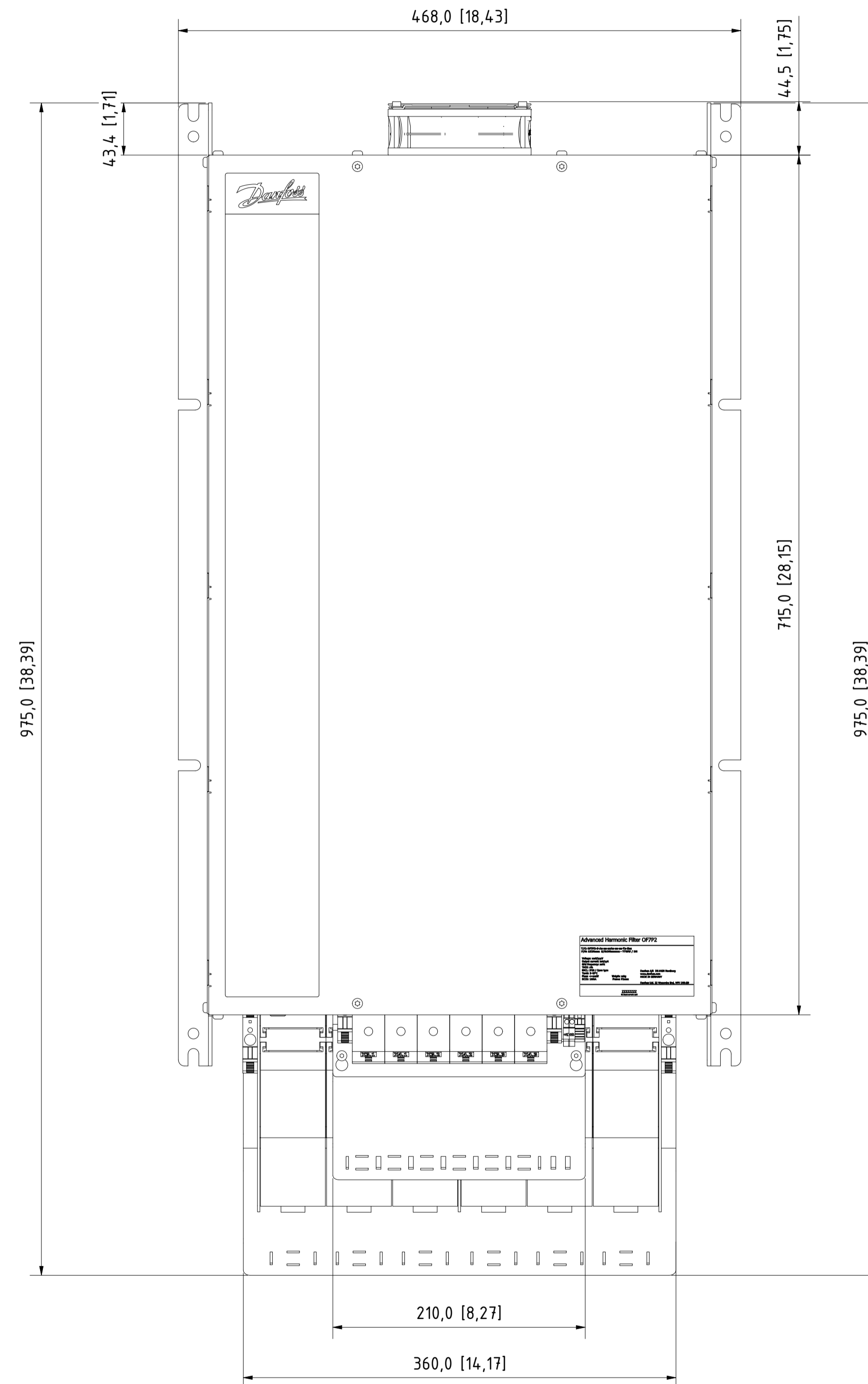
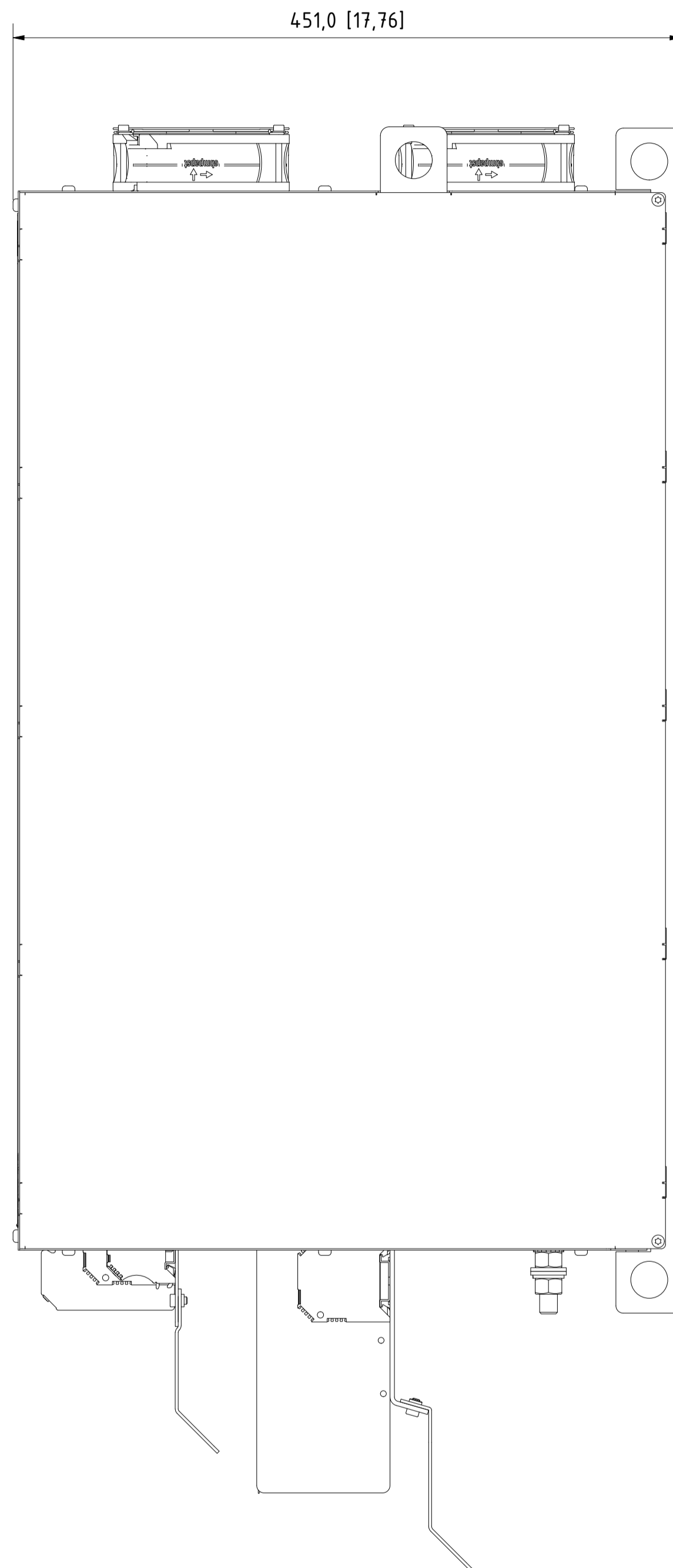
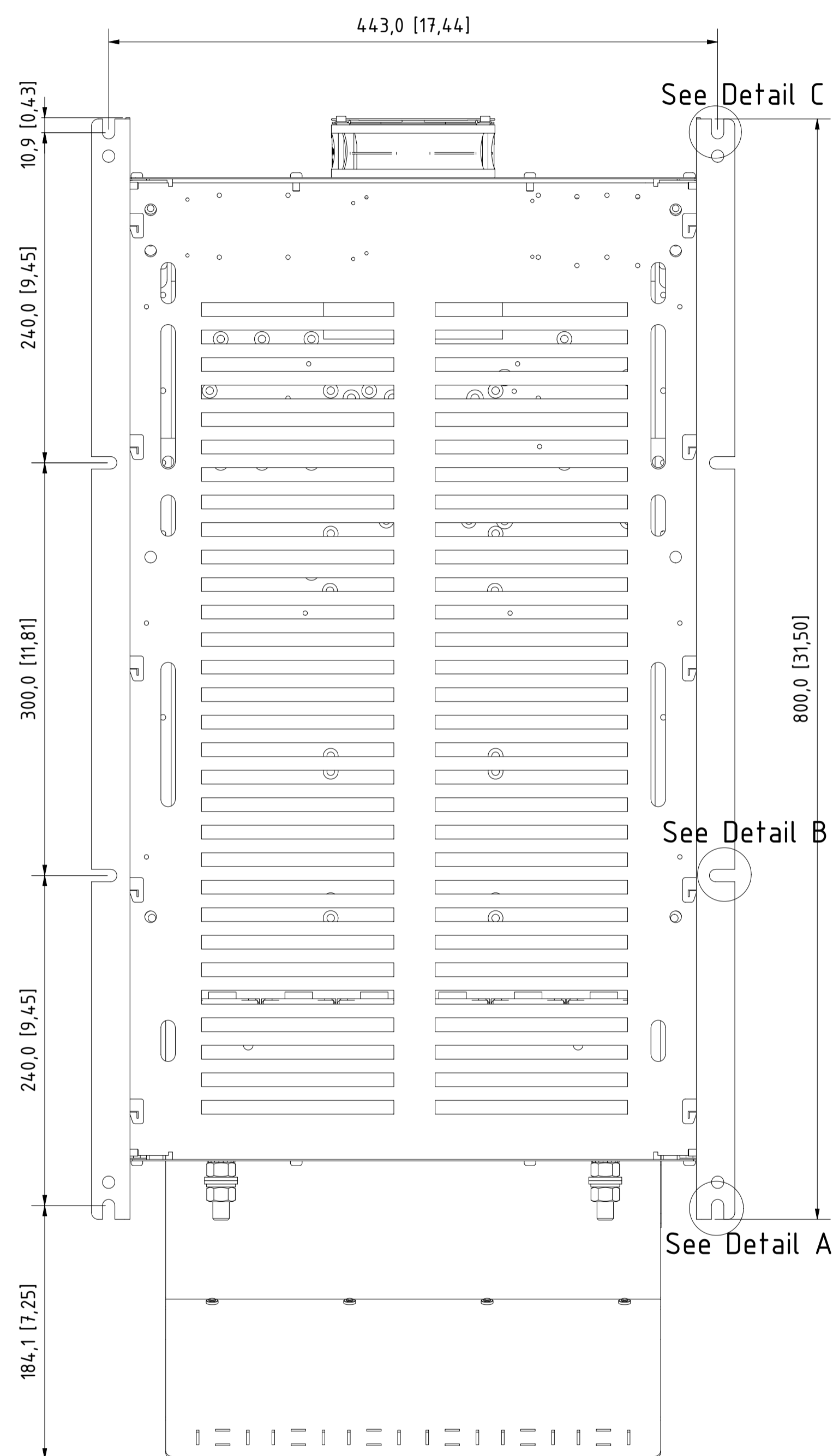
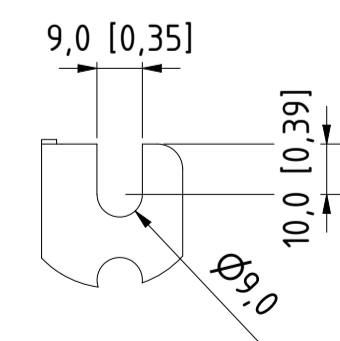
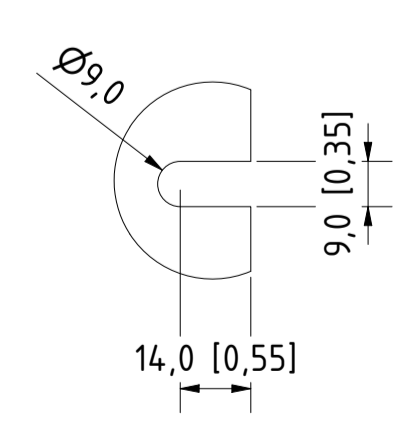
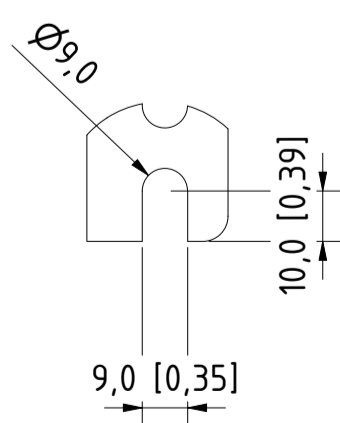


12 11 10 9 8 7 6 5 4 3 2 1

Type	Value
IP Class	IP20
UL Type	Open
Enclosure Colour	RAL 7001
Frame Size	P2AX7e



Dimension [mm]	Tolerances				
	<250	250>x>800	>800	parts in series	folded parts
Tolerance [mm]	+/-1	+/-2.5	+/-4	+/-2.5	+/-2.5



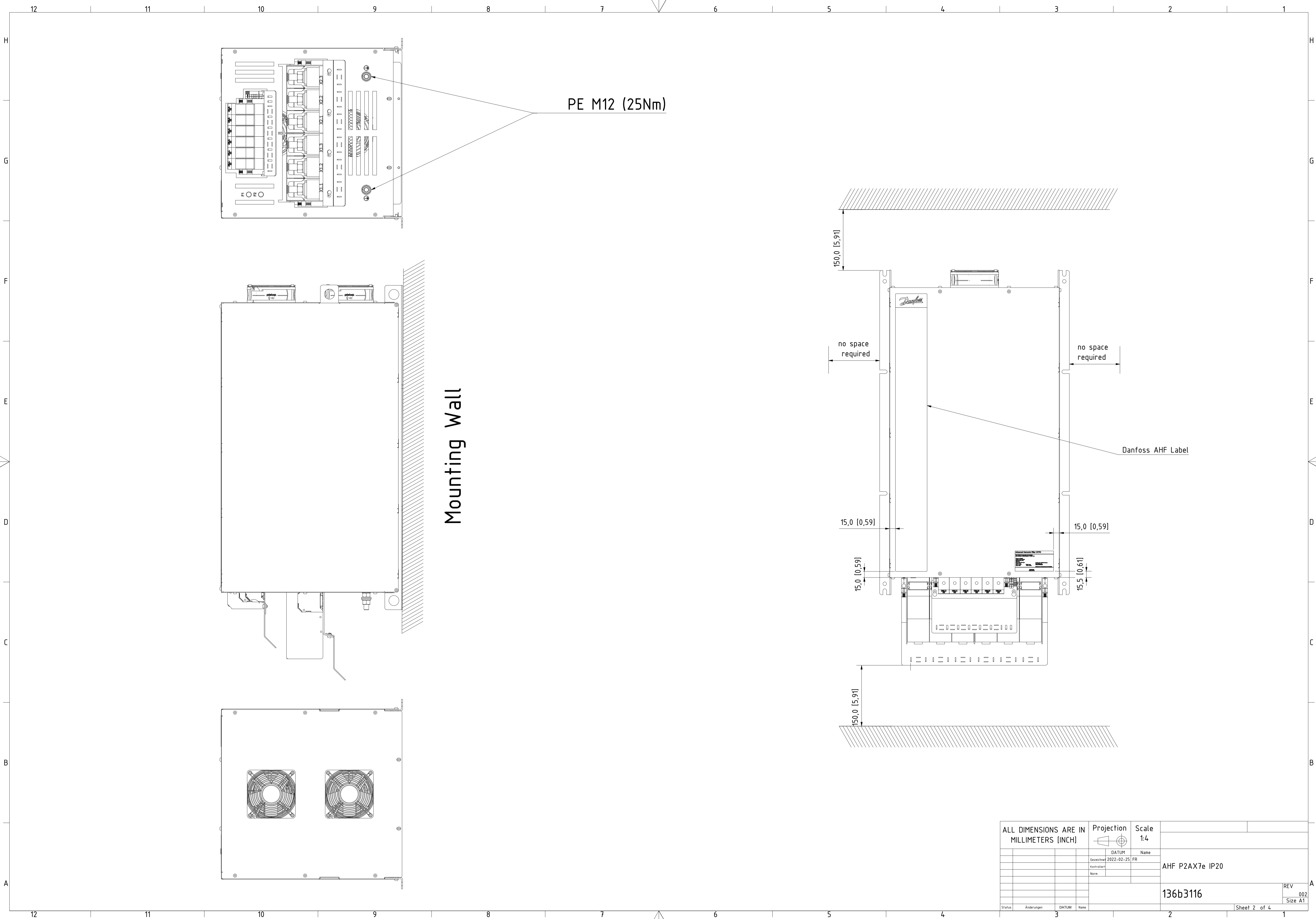
Detail A ( 2 : 3 )

Detail B ( 2 : 3 )

Detail C ( 2 : 3 )

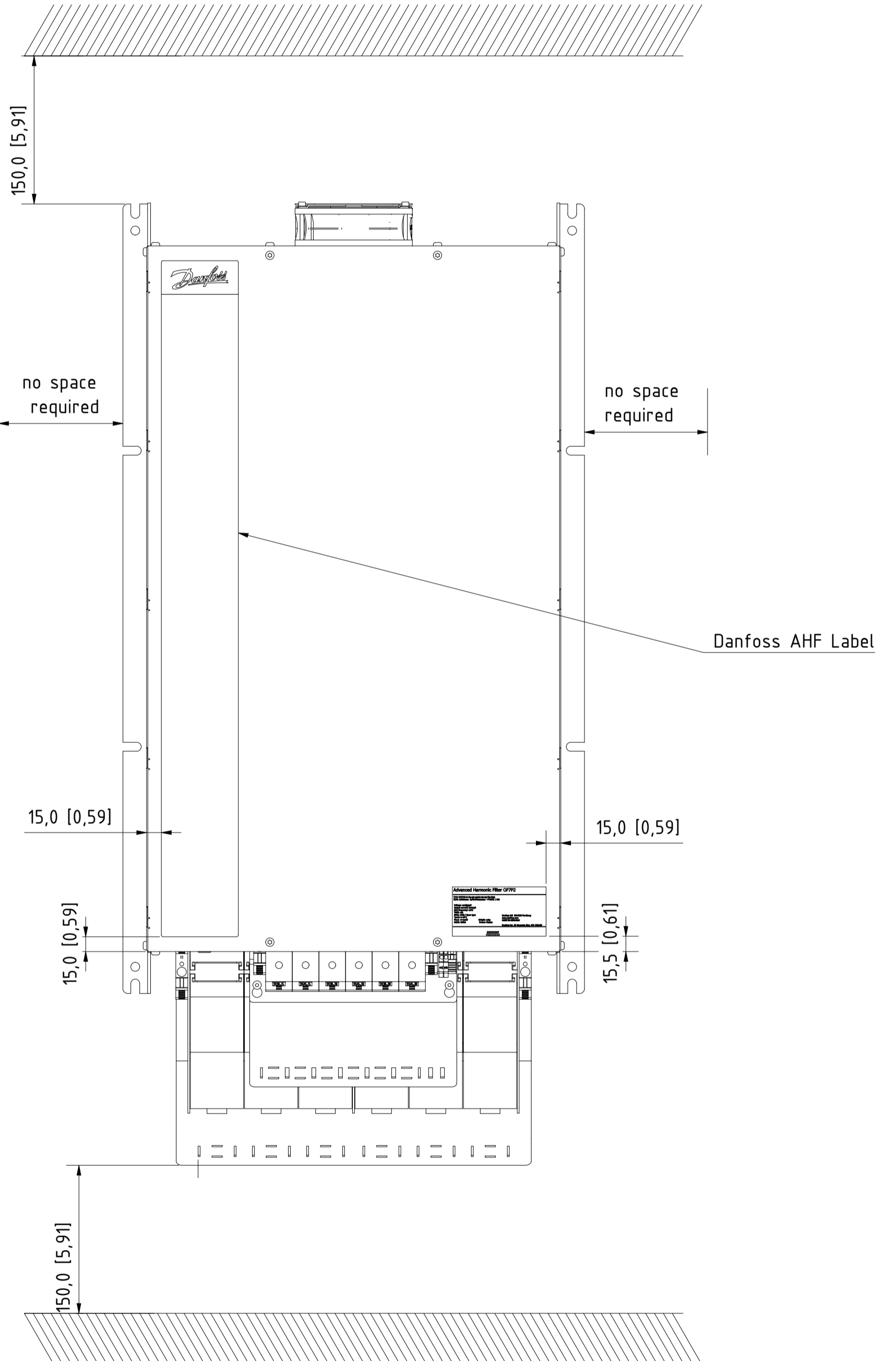
ALL DIMENSIONS ARE IN MILLIMETERS (INCH)		Projection	Scale	
			1:3	
		DATUM	Name	
		Gezeichnet 2022-02-25	FR	
		Kontrolliert		AHF P2AX7e IP20
		None		
				136b3116
				REV 002
				Size AT
Status	Änderungen	DATUM	Name	Sheet 1 of 4
		3		2

12 11 10 9 8 7 6 5 4 3 2 1



PE M12 (25Nm)

Mounting Wall



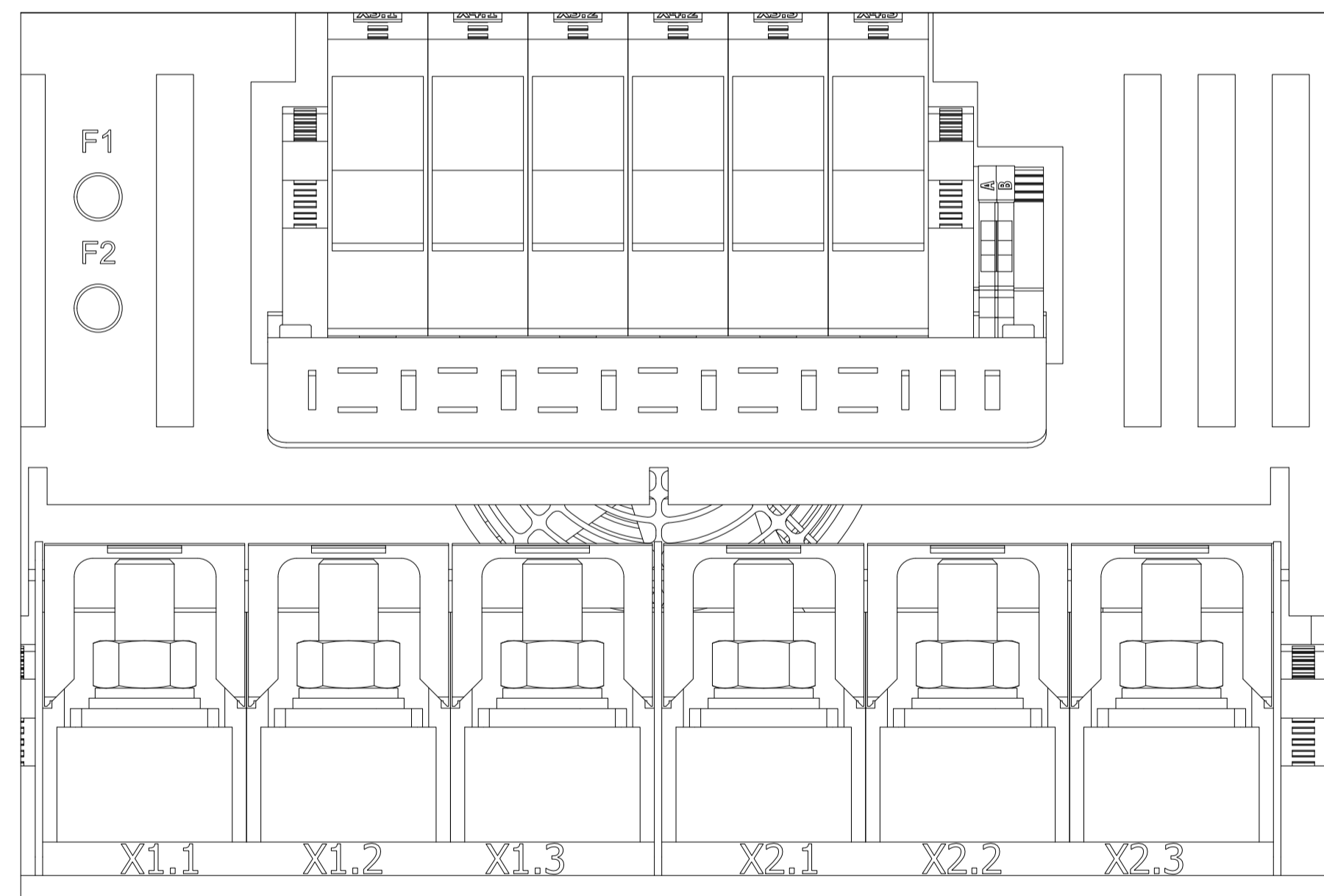
ALL DIMENSIONS ARE IN MILLIMETERS (INCH)		Projection	Scale	
			1:4	
		DATUM	Name	
		Gezeichnet	2022-02-25	FR
		Kontrolliert		
		None		
				AHF P2AX7e IP20
				136b3116
				REV 002
				Size A1
Status	Änderungen	DATUM	Name	Sheet 2 of 4

Included Accessories (premounted)				
Pos.	Pcs.	Description	Type	Torque
1	1	strain relief X1/X2	-	-
2	4	screw	M5x10 HX4	5Nm
3	1	strain relief X3/X4	-	-
4	2	screw	M5x6 HX4	5Nm

A/B Temperature 2,5mm<sup>2</sup>  
Torque: 0.8Nm Tool Slot 0.5x3.0

X3/4 Capacitor Disconnect 95mm<sup>2</sup>  
Torque: 18Nm Tool S6

X3 . 1   X4 . 1   X3 . 2   X4 . 2   X3 . 3   X4 . 3

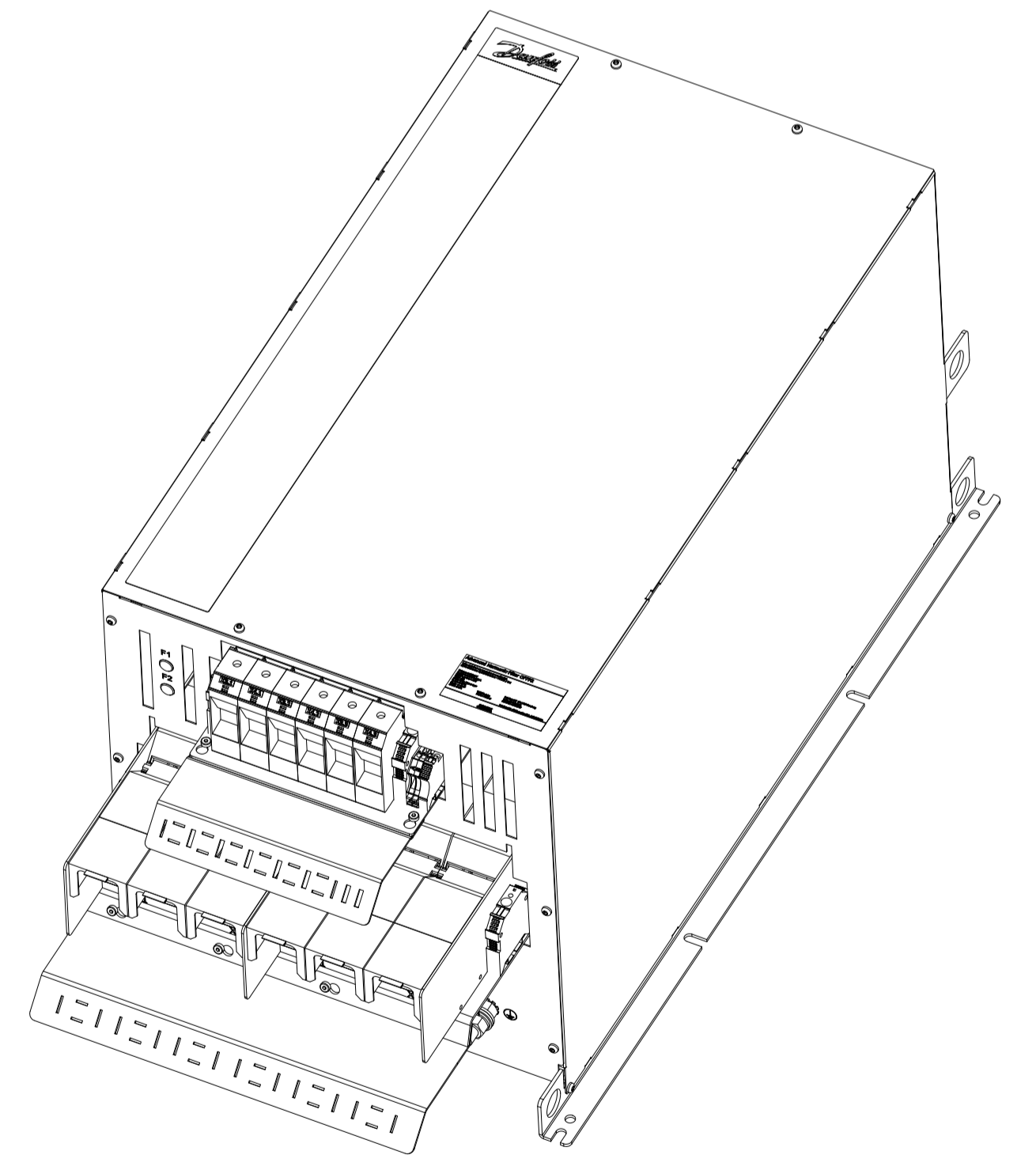
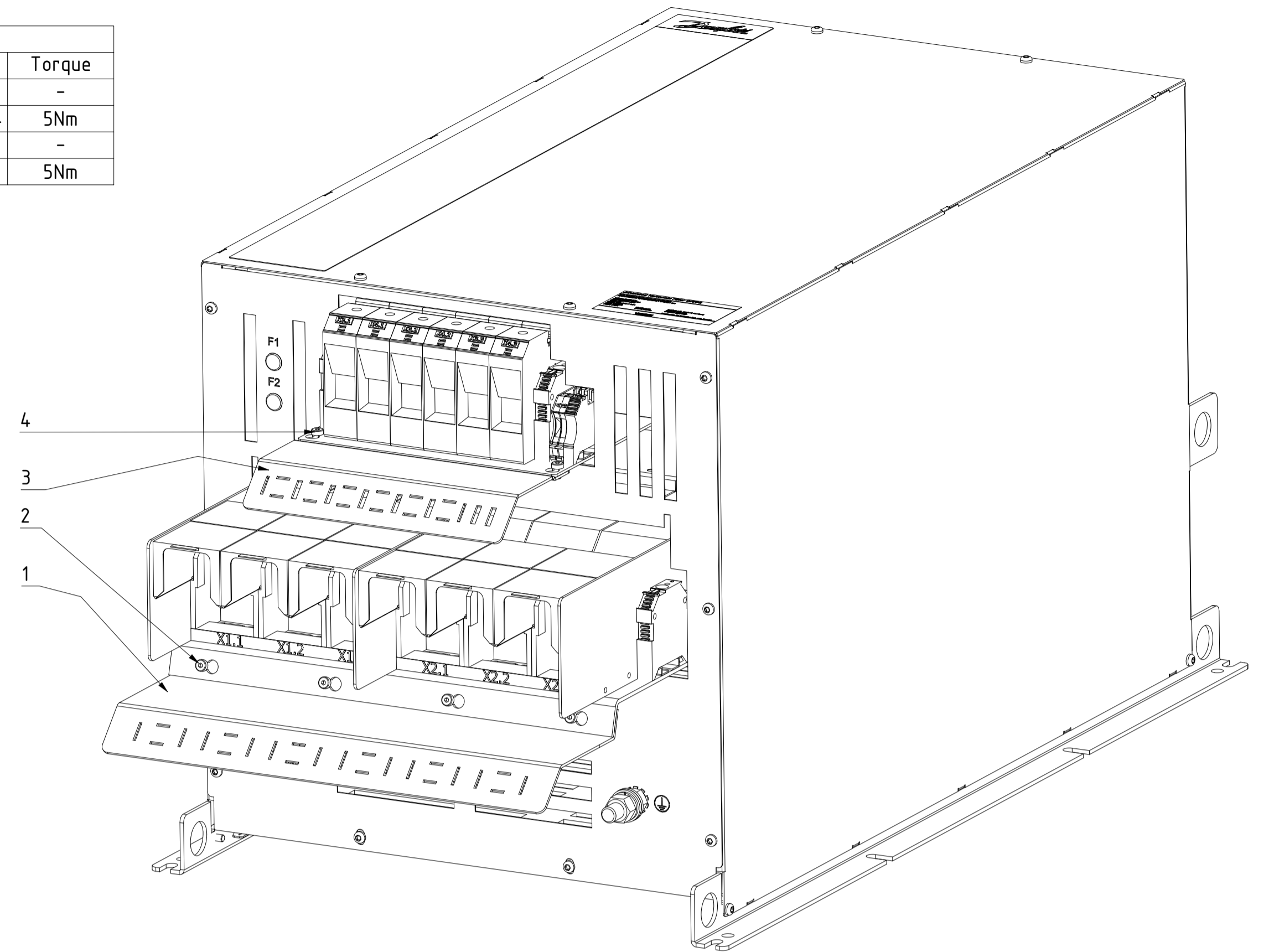


X1.1   X1.2   X1.3   X2.1   X2.2   X2.3

X1 Mains 300mm<sup>2</sup>  
Torque: 50Nm Tool SW24

X2 Drive 300mm<sup>2</sup>  
Torque: 50Nm Tool SW24

Scale ( 2 : 3 )



Scale ( 1 : 5 )

ALL DIMENSIONS ARE IN MILLIMETERS (INCH)		Projection	Scale	
			1:3	
Gezeichnet	DATUM	Name		
Kontrolliert	2022-02-25	FR	AHF P2AX7e IP20	
None				
			136b3116	REV 002
Status	Änderungen	DATUM	Name	Size A1
				Sheet 3 of 4

Product Label (95x50mm)

### Advanced Harmonic Filter OF7P2 *Danfoss*

**T/C: OF7P2-S-Ax-xx-xxAx-xx-xx-Tx-Exx**  
**P/N: 132Nzzzz S/N:DNxxxxxx - YYWW / DN**

Voltage: xxxV/yyyV  
 Output current: xxA/yyA  
 Grid frequency: xxHz  
 THDI: x%  
 ENCL: IP20 / Open type  
 Tamb: 5-45°C  
 Ploss: <=xxxW  
 SCCR: 100kA



Danfoss A/S DK-6430 Nordborg  
 www.danfoss.com  
 MADE IN GERMANY

Danfoss Ltd. 22 Wycombe End, HP9 1NB.GB



IND.CONT.EQ. 1HD1  
 ta(max)=45°C  
 E xx xx xx

ZZZZZZZZ  
 UL Input current: zzzA



Packaging Label (90x50mm)

### Advanced Harmonic Filter OF7P2 *Danfoss*

MADE IN GERMANY

**T/C: OF7P2-S-Ax-xx-xxAx-xxx-xx-Tx-Exx**  
**P/N: 132Nzzzz**  
**S/N:DNxxxxxx - YYWW / DN**

Voltage: xxxV/xxxV  
 Output current: xxA/xxA  
 Grid frequency: xxHz  
 THDI: x%

Tstorage: -40 - 70°C  
 ENCL: IP20 / Open type  
 Weigth: xxkg  
 Frame: P2xxxx





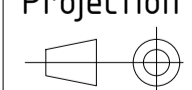
Danfoss A/S  
 DK-6430 Nordborg  
 www.danfoss.com





Danfoss Ltd.  
 22 Wycombe End,  
 HP9 1NB,GB

OF7P2	Identification	Voltage	Output Current	Input Current	Grid frequency	THDI	Ploss	Weight	Frame	UL mark	Revcon part number
P/N	T/C	[V]	[A]	[A]	[Hz]	[%]	[W]	[kg]	-	-	ZZZZZZZZ
132N6801	OF7P2-S-AF-46-355A-060-10-T1-E20	460/400	355/325	355/325	60	10	1758	163	X7	x	25030035
132N9616	OF7P2-S-AF-46-380A-060-10-T1-E20	460/400	380/385	380/381	60	10	1864	172	X7	x	25030036

ALL DIMENSIONS ARE IN MILLIMETERS (INCH)		Projection 	Scale 3:1
Gezeichnet	DATUM	Name	
Kontrolliert	2022-02-25	FR	
None			AHF P2AX7e IP20
			136b3116
Status	Änderungen	DATUM	Name
			REV 002 Size A1
			Sheet 4 of 4