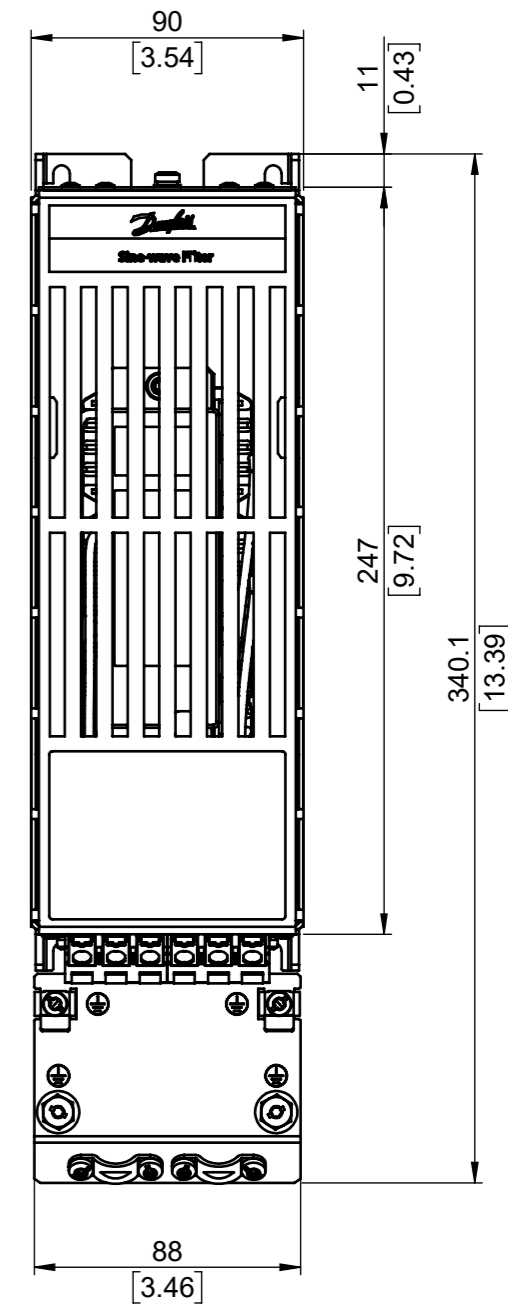
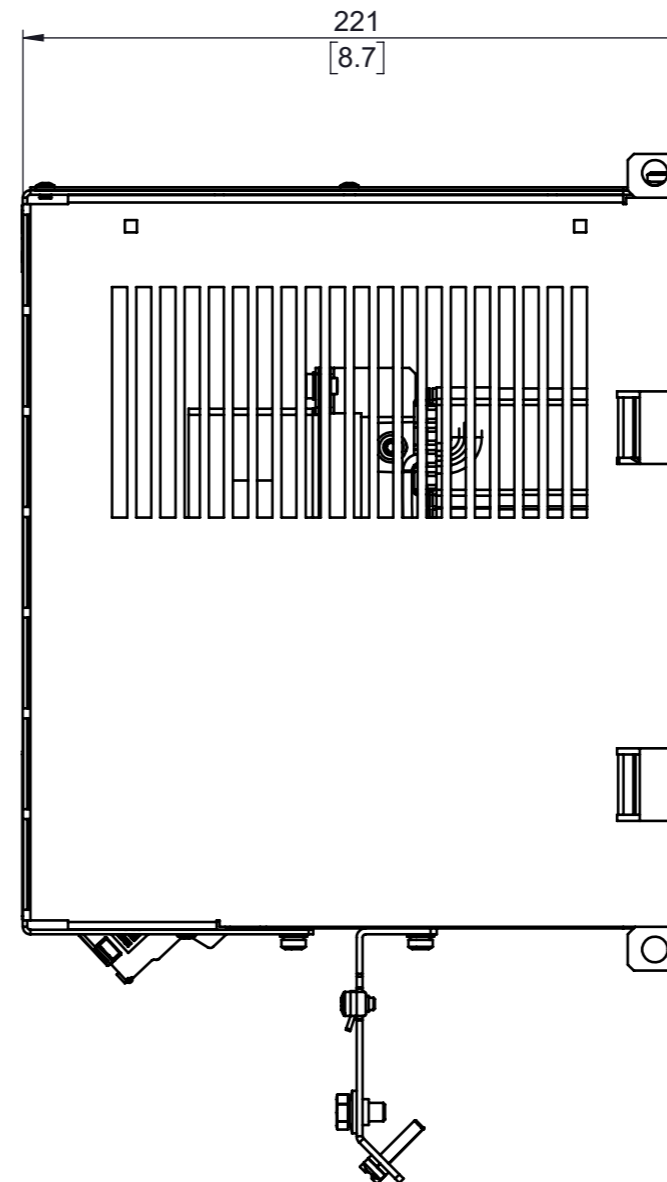
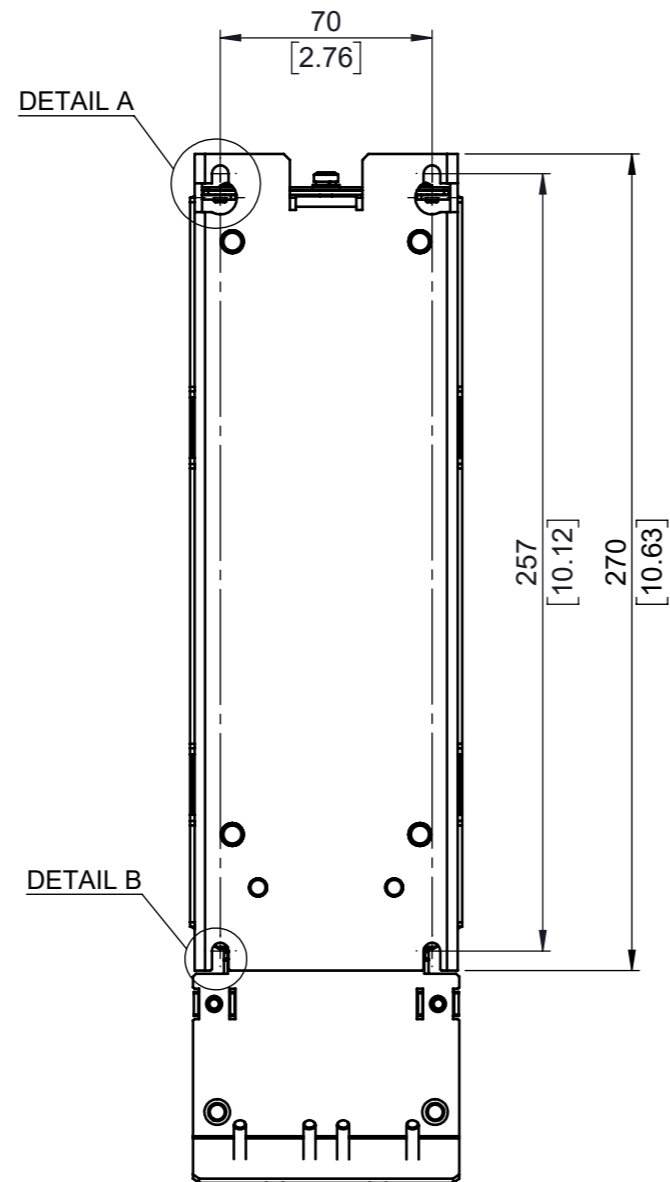
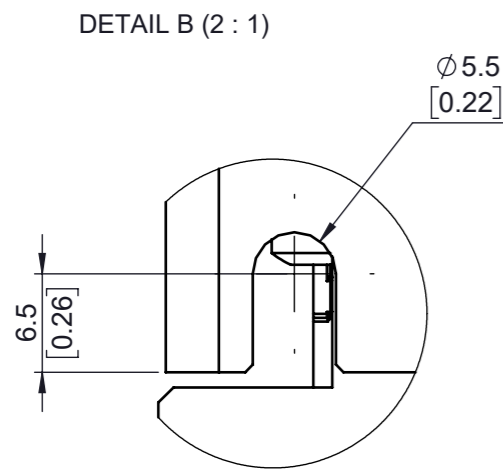
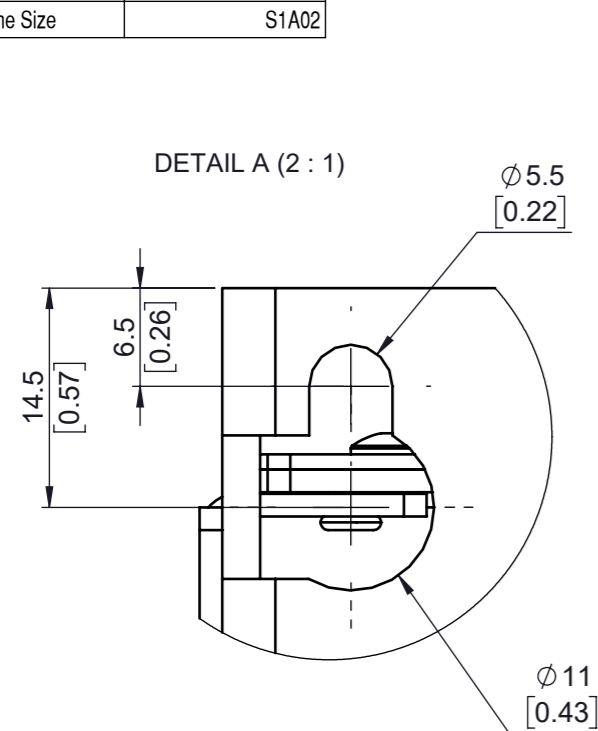
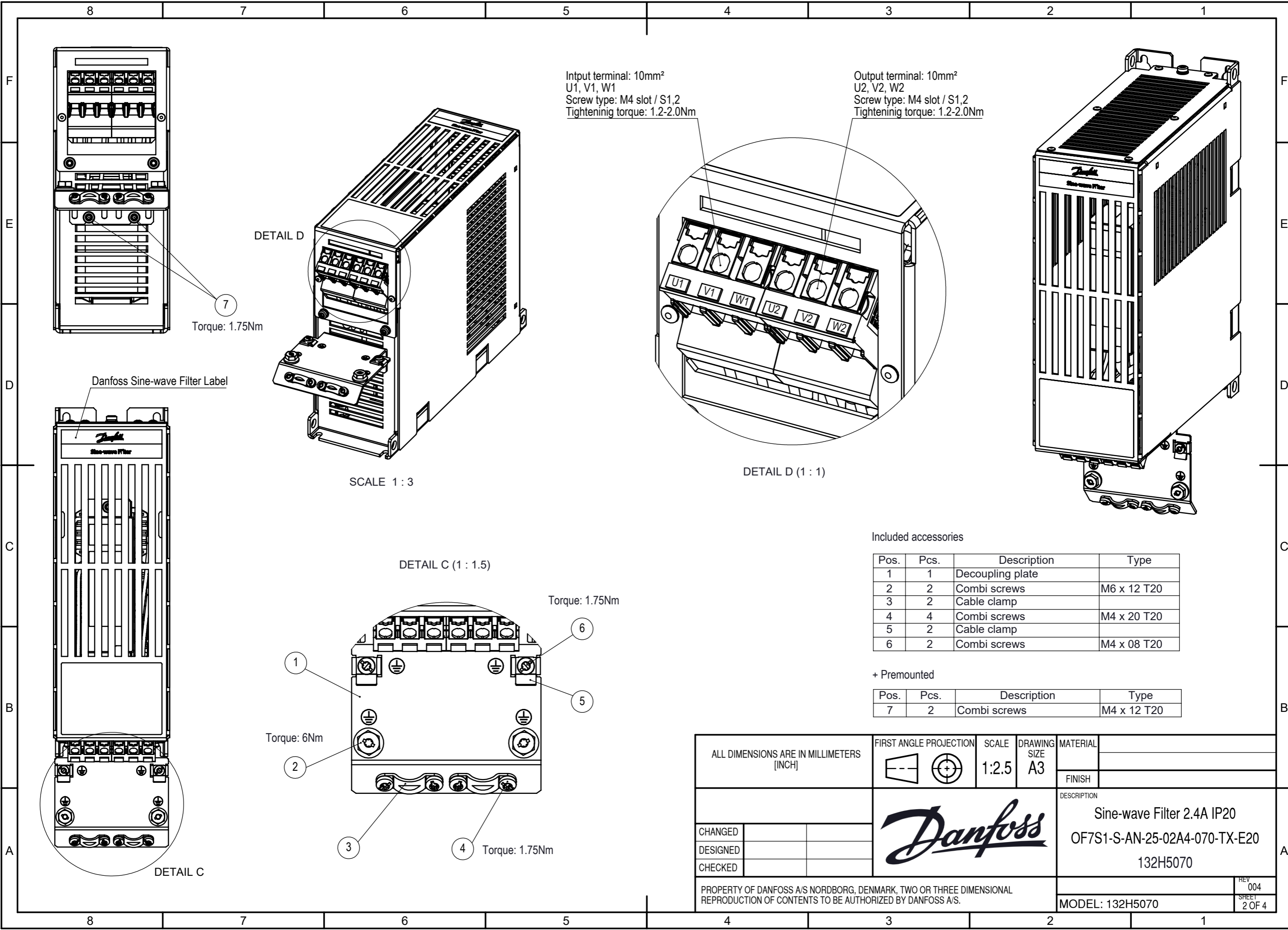


Type	Value
Max Weight	5.4 Kg
IP Class	IP 20
UL Type	Open
Enclosure Colour	NCS S5502 B
Frame Size	S1A02



tolerances according to ISO 2768-mK						
class	0.5mm - 3mm	>3mm - 6mm	>6mm - 30mm	>30mm - 120mm	>120mm - 400mm	>400mm - 1000m
m	+/- 0.1mm	+/- 0.1mm	+/-0.2mm	+/-0.3mm	+/-0.5mm	+/- 0.8mm
class	up to 10mm	>10mm - 30mm	>30mm - 100mm	>100mm - 300mm	>300mm - 1000mm	>1000mm - 3000mm
K	0.05mm	0.1mm	0.2mm	0.4mm	0.6mm	0.8mm

ALL DIMENSIONS ARE IN MILLIMETERS [INCH]		FIRST ANGLE PROJECTION	SCALE 1:2.5	DRAWING SIZE A3	MATERIAL	
					FINISH	
					DESCRIPTION	
CHANGED					Sine-wave Filter 2.4A IP20	
DESIGNED					OF7S1-S-AN-25-02A4-070-TX-E20	
CHECKED		132H5070		REV 004		
PROPERTY OF DANFOSS A/S NORDBORG, DENMARK, TWO OR THREE DIMENSIONAL REPRODUCTION OF CONTENTS TO BE AUTHORIZED BY DANFOSS A/S.					SHEET 1 OF 4	
MODEL: 132H5070						



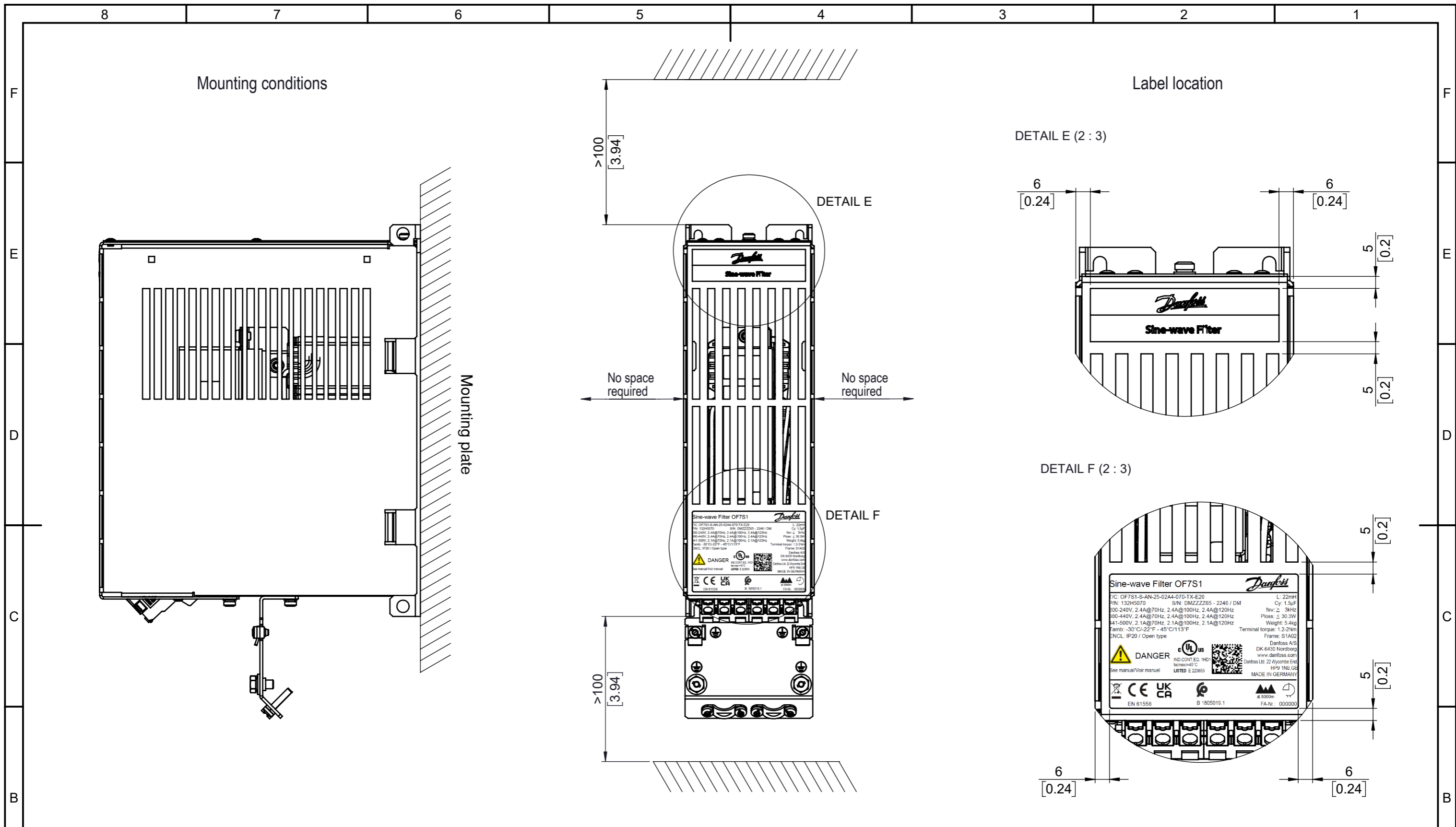
Included accessories

Pos.	Pcs.	Description	Type
1	1	Decoupling plate	
2	2	Combi screws	M6 x 12 T20
3	2	Cable clamp	
4	4	Combi screws	M4 x 20 T20
5	2	Cable clamp	
6	2	Combi screws	M4 x 08 T20

+ Premounted

Pos.	Pcs.	Description	Type
7	2	Combi screws	M4 x 12 T20

ALL DIMENSIONS ARE IN MILLIMETERS [INCH]		FIRST ANGLE PROJECTION	SCALE 1:2.5	DRAWING SIZE A3	MATERIAL	
					FINISH	
					DESCRIPTION	
CHANGED					Sine-wave Filter 2.4A IP20	
DESIGNED					OF7S1-S-AN-25-02A4-070-TX-E20	
CHECKED		132H5070		MODEL: 132H5070		
PROPERTY OF DANFOSS A/S NORDBOURG, DENMARK, TWO OR THREE DIMENSIONAL REPRODUCTION OF CONTENTS TO BE AUTHORIZED BY DANFOSS A/S.					REV 004 SHEET 2 OF 4	




tolerances according to ISO 2768-mK


class	0.5mm - 3mm	>3mm - 6mm	>6mm - 30mm	>30mm - 120mm	>120mm - 400mm	>400mm - 1000m
m	+/- 0.1mm	+/- 0.1mm	+/-0.2mm	+/-0.3mm	+/-0.5mm	+/- 0.8mm
class	up to 10mm	>10mm - 30mm	>30mm - 100mm	>100mm - 300mm	>300mm - 1000mm	>1000mm - 3000mm
K	0.05mm	0.1mm	0.2mm	0.4mm	0.6mm	0.8mm


ALL DIMENSIONS ARE IN MILLIMETERS [INCH]		FIRST ANGLE PROJECTION	SCALE 1:2.5	DRAWING SIZE A3	MATERIAL
					FINISH
					DESCRIPTION
CHANGED					Sine-wave Filter 2.4A IP20 OF7S1-S-AN-25-02A4-070-TX-E20 132H5070
DESIGNED				REV 004	
CHECKED				SHEET 3 OF 4	
PROPERTY OF DANFOSS A/S NORDBOURG, DENMARK, TWO OR THREE DIMENSIONAL REPRODUCTION OF CONTENTS TO BE AUTHORIZED BY DANFOSS A/S.					MODEL: 132H5070


**Product label (78x55.5mm)**

**Sine-wave Filter OF7S1** 






T/C: OF7S1-S-AN-25-02A4-070-TX-E20 L: 22mH  
 P/N: 132H5070 S/N: DMZZZZ65 - 2246 / DM Cy: 1.5µF  
 200-240V, 2.4A@70Hz, 2.4A@100Hz, 2.4A@120Hz fsw: ≥ 3kHz  
 380-440V, 2.4A@70Hz, 2.4A@100Hz, 2.4A@120Hz Ploss: ≤ 30.3W  
 441-500V, 2.1A@70Hz, 2.1A@100Hz, 2.1A@120Hz Weight: 5.4kg  
 Tamb: -30°C/-22°F - 45°C/113°F Terminal torque: 1.2-2Nm  
 ENCL: IP20 / Open type Frame: S1A02

 **DANGER**  
 See manual/Voir manuel

 **UL** US  
 IND. CONT. EQ. 1HD1  
 ta(max)=45°C  
 LISTED E 223655



Danfoss A/S  
 DK-6430 Nordborg  
 www.danfoss.com  
 Danfoss Ltd. 22 Wycombe End,  
 HP9 1NB, GB  
**MADE IN GERMANY**

 **EN 61558**  **UK CA**  **B 1805019.1**  ≤ 5000m  **FA-Nr.: 000000**

**Packaging label (100x59mm)**

**Sine-wave Filter OF7S1** 

T/C: OF7S1-S-AN-25-02A4-070-TX-E20  
**P/N: 132H5070**  
 S/N: DMZZZZ65 - 2245 / DM

200-240V: 2.4A Tstorage: -30°C/-22°F - 70°C/158°F  
 380-440V: 2.4A ENCL: IP20 / Open type  
 441-500V: 2.1A Frame: S1A02  
 Weight: 6.1kg

 5 714853 340859 



 ZZZZ652245

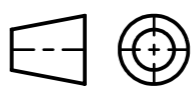

 **CE**  
 EN61558

 **UK CA**

Danfoss A/S,  
 DK-6430 Nordborg  
 www.danfoss.com

Danfoss Ltd. 22 Wycombe End,  
 HP9 1NB, GB

 **B 1805019.1** **FA-Nr.: 000000**

ALL DIMENSIONS ARE IN MILLIMETERS [INCH]		FIRST ANGLE PROJECTION 	SCALE 1.5:1	DRAWING SIZE A3	MATERIAL	
					FINISH	
					DESCRIPTION	
					Sine-wave Filter 2.4A IP20 OF7S1-S-AN-25-02A4-070-TX-E20 132H5070	
					MODEL: 132H5070	
CHANGED					REV 004	
DESIGNED					SHEET 4 OF 4	
CHECKED						
PROPERTY OF DANFOSS A/S NORDBOURG, DENMARK, TWO OR THREE DIMENSIONAL REPRODUCTION OF CONTENTS TO BE AUTHORIZED BY DANFOSS A/S.						