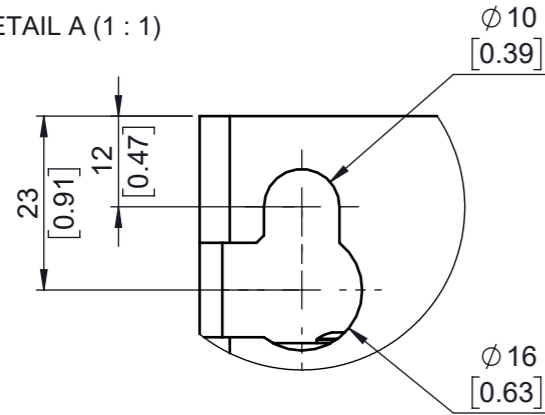
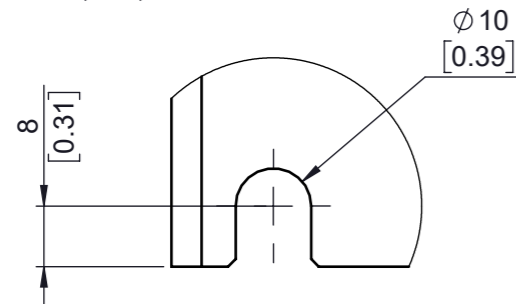


Type	Value
Max Weight	60.3 Kg
IP Class	IP 20
UL Type	Open
Enclosure Color	NCS S5502 B
Frame Size	S1A06

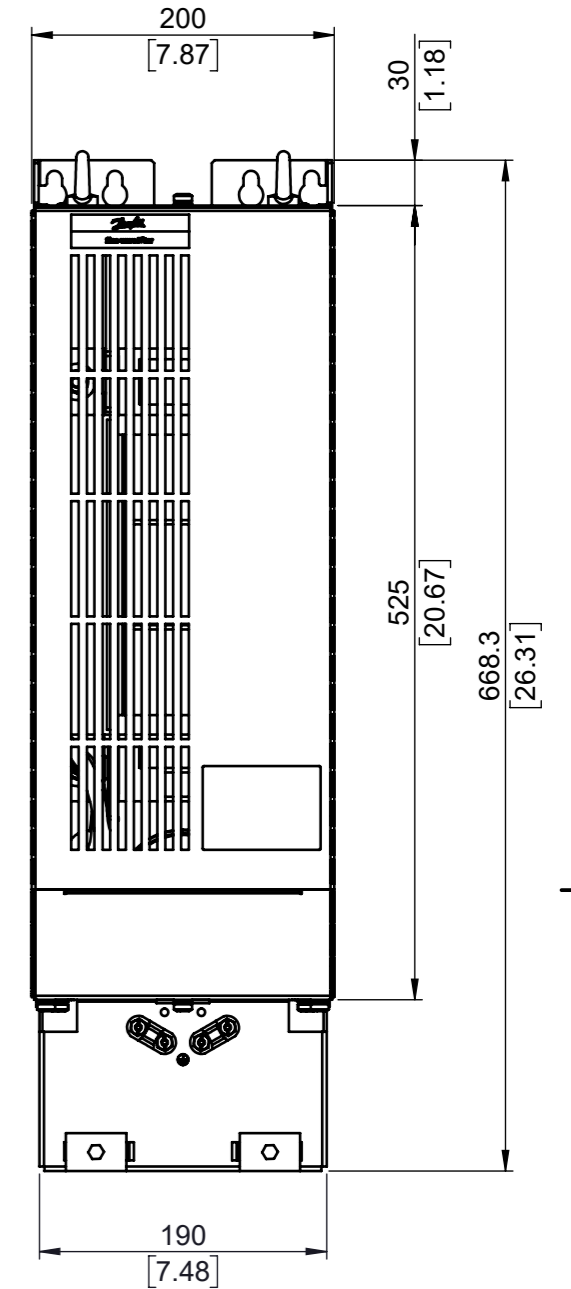
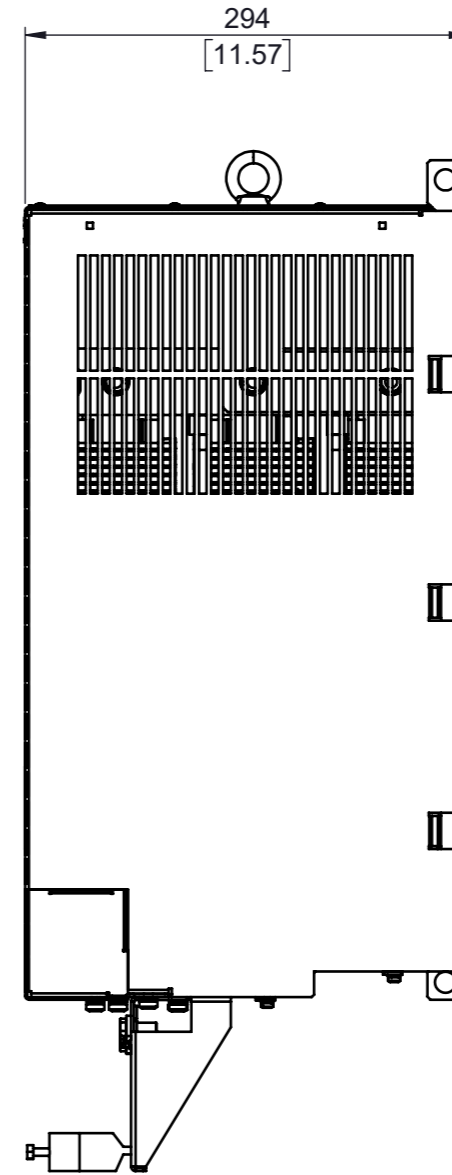
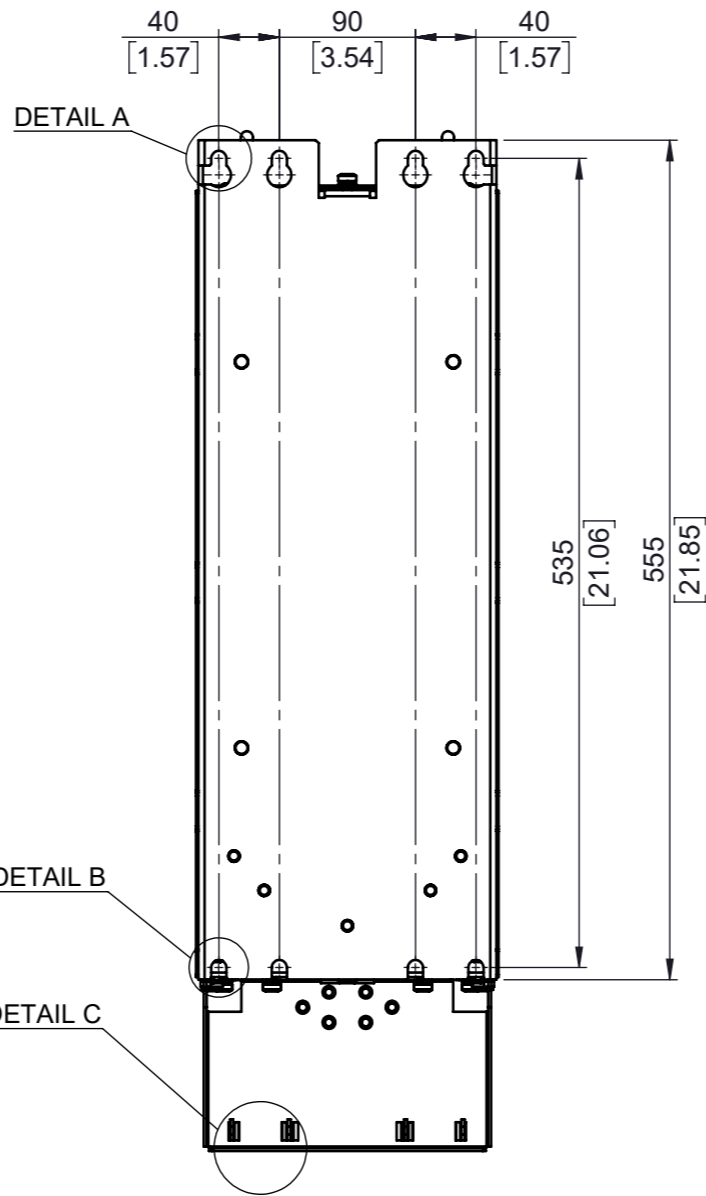
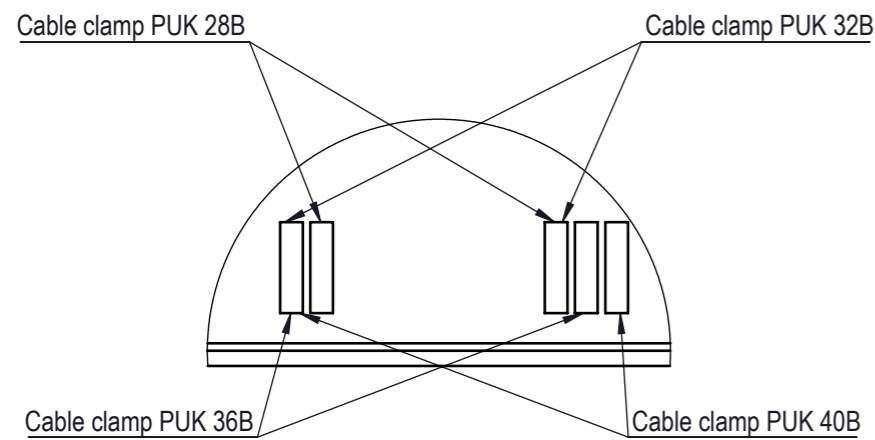
DETAIL A (1 : 1)



DETAIL B (1 : 1)

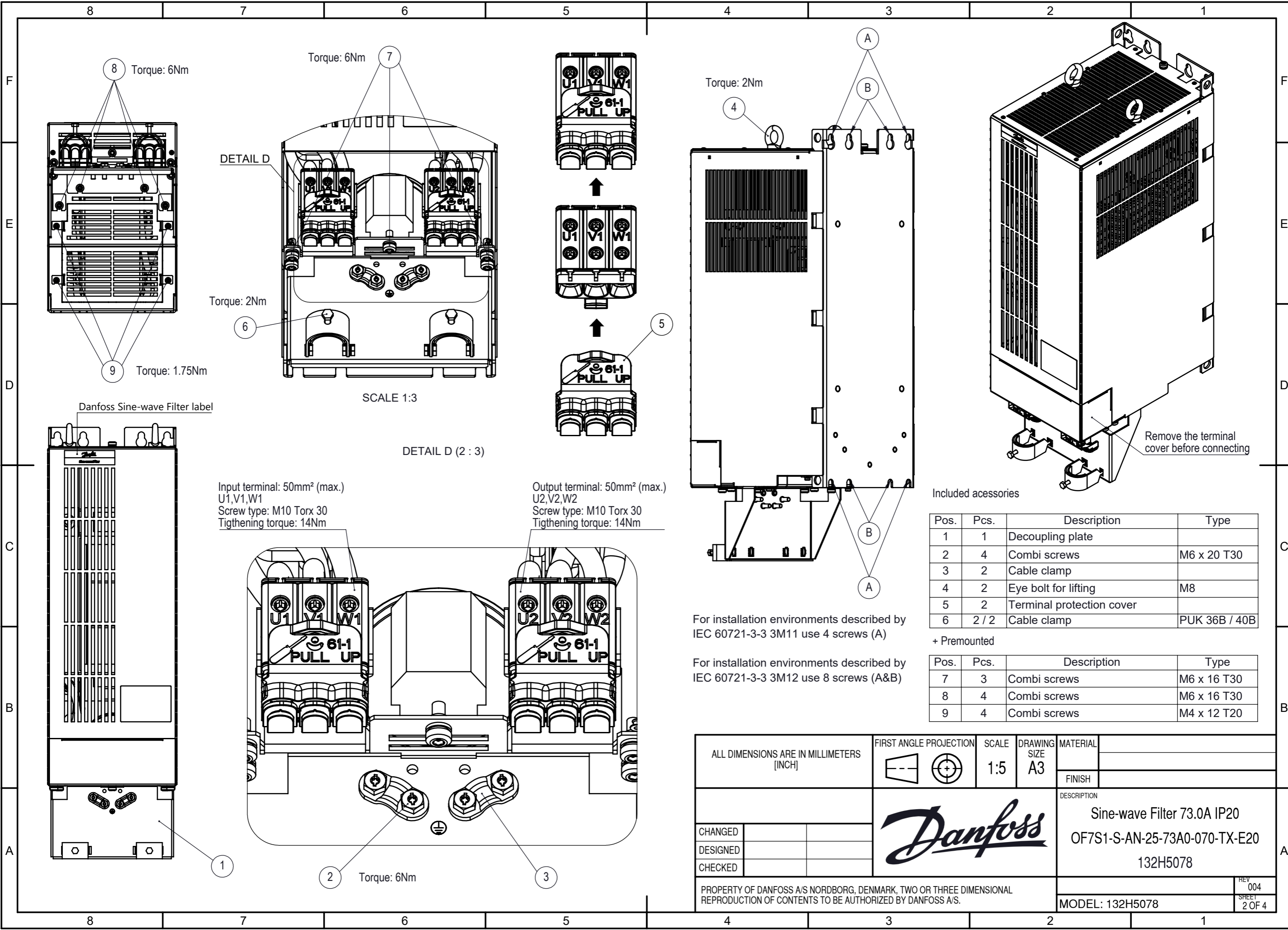


DETAIL C (1 : 1)



tolerances according to ISO 2768-mK						
class	0.5mm - 3mm	>3mm - 6mm	>6mm - 30mm	>30mm - 120mm	>120mm - 400mm	>400mm - 1000m
m	+/- 0.1mm	+/- 0.1mm	+/- 0.2mm	+/- 0.3mm	+/- 0.5mm	+/- 0.8mm
class	up to 10mm	>10mm - 30mm	>30mm - 100mm	>100mm - 300mm	>300mm - 1000mm	>1000mm - 3000mm
K	0.05mm	0.1mm	0.2mm	0.4mm	0.6mm	0.8mm

ALL DIMENSIONS ARE IN MILLIMETERS [INCH]		FIRST ANGLE PROJECTION	SCALE	DRAWING SIZE	MATERIAL
			1:5	A3	
		FINISH			
		DESCRIPTION			
		Sine-wave Filter 73.0A IP20			
		OF7S1-S-AN-25-73A0-070-TX-E20			
		132H5078			
CHANGED					REV 004
DESIGNED					SHEET 1 OF 4
CHECKED					
PROPERTY OF DANFOSS A/S NORDBORG, DENMARK, TWO OR THREE DIMENSIONAL REPRODUCTION OF CONTENTS TO BE AUTHORIZED BY DANFOSS A/S.					MODEL: 132H5078



Input terminal: 50mm² (max.)
 U1,V1,W1
 Screw type: M10 Torx 30
 Tightening torque: 14Nm

Output terminal: 50mm² (max.)
 U2,V2,W2
 Screw type: M10 Torx 30
 Tightening torque: 14Nm

Included accessories

Pos.	Pcs.	Description	Type
1	1	Decoupling plate	
2	4	Combi screws	M6 x 20 T30
3	2	Cable clamp	
4	2	Eye bolt for lifting	M8
5	2	Terminal protection cover	
6	2 / 2	Cable clamp	PUK 36B / 40B

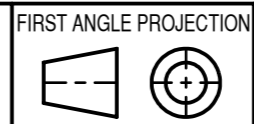
+ Premounted

Pos.	Pcs.	Description	Type
7	3	Combi screws	M6 x 16 T30
8	4	Combi screws	M6 x 16 T30
9	4	Combi screws	M4 x 12 T20

For installation environments described by IEC 60721-3-3 3M11 use 4 screws (A)

For installation environments described by IEC 60721-3-3 3M12 use 8 screws (A&B)

ALL DIMENSIONS ARE IN MILLIMETERS [INCH]



SCALE 1:5
 DRAWING SIZE A3

MATERIAL	
FINISH	

CHANGED		
DESIGNED		
CHECKED		

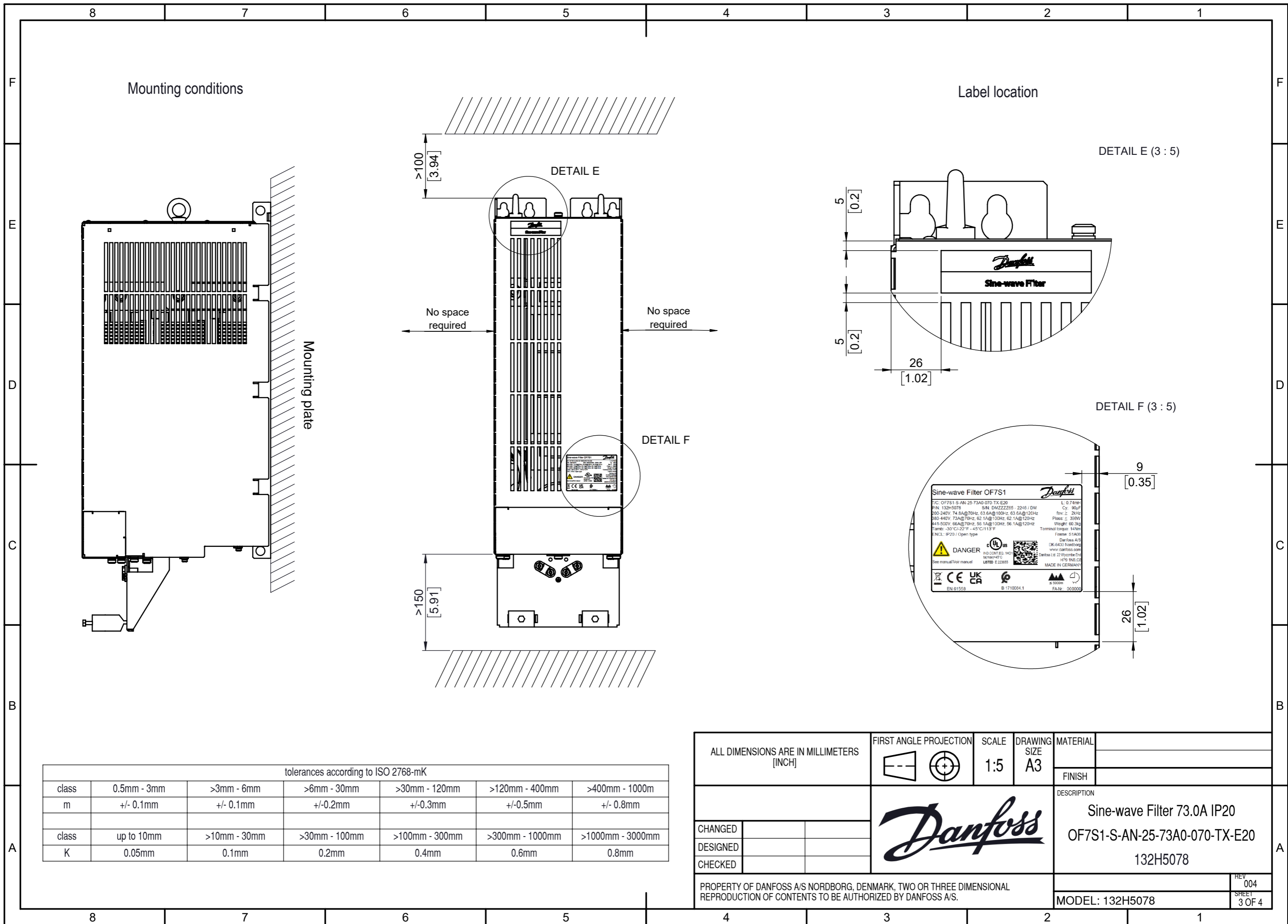


DESCRIPTION
 Sine-wave Filter 73.0A IP20
 OF7S1-S-AN-25-73A0-070-TX-E20
 132H5078

PROPERTY OF DANFOSS A/S NORDBOURG, DENMARK, TWO OR THREE DIMENSIONAL REPRODUCTION OF CONTENTS TO BE AUTHORIZED BY DANFOSS A/S.

MODEL: 132H5078

REV 004
 SHEET 2 OF 4



Mounting conditions

Label location

DETAIL E (3 : 5)

DETAIL E

DETAIL F (3 : 5)

DETAIL F

9 [0.35]

26 [1.02]

>100 [3.94]

No space required

No space required

5 [0.2]

5 [0.2]

26 [1.02]

>150 [5.91]









Mounting plate

tolerances according to ISO 2768-mK

class	0.5mm - 3mm	>3mm - 6mm	>6mm - 30mm	>30mm - 120mm	>120mm - 400mm	>400mm - 1000m
m	+/- 0.1mm	+/- 0.1mm	+/-0.2mm	+/-0.3mm	+/-0.5mm	+/- 0.8mm
class	up to 10mm	>10mm - 30mm	>30mm - 100mm	>100mm - 300mm	>300mm - 1000mm	>1000mm - 3000mm
K	0.05mm	0.1mm	0.2mm	0.4mm	0.6mm	0.8mm



ALL DIMENSIONS ARE IN MILLIMETERS [INCH]		FIRST ANGLE PROJECTION	SCALE	DRAWING SIZE	MATERIAL		
			1:5	A3			
					FINISH		
					DESCRIPTION		
					Sine-wave Filter 73.0A IP20 OF7S1-S-AN-25-73A0-070-TX-E20 132H5078		
CHANGED					REV 004		
DESIGNED					SHEET 3 OF 4		
CHECKED							
PROPERTY OF DANFOSS A/S NORDBORG, DENMARK, TWO OR THREE DIMENSIONAL REPRODUCTION OF CONTENTS TO BE AUTHORIZED BY DANFOSS A/S.					MODEL: 132H5078		

Product label (78x55.5mm)

Sine-wave Filter OF7S1			
T/C: OF7S1-S-AN-25-73A0-070-TX-E20		L: 0.74mH	
P/N: 132H5078	S/N: DMZZZZ65 - 2246 / DM	Cy: 90µF	
200-240V, 74.8A@70Hz, 63.6A@100Hz, 63.6A@120Hz		fsw: ≥ 2kHz	
380-440V, 73A@70Hz, 62.1A@100Hz, 62.1A@120Hz		Ploss: ≤ 398W	
441-500V, 66A@70Hz, 56.1A@100Hz, 56.1A@120Hz		Weight: 60.3kg	
Tamb: -30°C/-22°F - 45°C/113°F		Terminal torque: 14Nm	
ENCL: IP20 / Open type		Frame: S1A06	
	DANGER		
See manual/Voir manuel		Danfoss A/S DK-6430 Nordborg www.danfoss.com Danfoss Ltd. 22 Wycombe End, HP9 1NB, GB MADE IN GERMANY	
			
EN 61558		B 1710084.1	FA-Nr.: 000000

Packaging label (100x59mm)

Sine-wave Filter OF7S1			
T/C: OF7S1-S-AN-25-73A0-070-TX-E20		MADE IN GERMANY	
P/N: 132H5078			
S/N: DMZZZZ65 - 2245 / DM			
200-240V: 74.8A		Tstorage: -30°C/-22°F - 70°C/158°F	
380-440V: 73A		ENCL: IP20 / Open type	
441-500V: 66A		Frame: S1A06	
		Weight: 76.8kg	
			
		5 714853 340903	
			
		ZZZZ652245	
			Danfoss A/S, DK-6430 Nordborg www.danfoss.com
			Danfoss Ltd. 22 Wycombe End, HP9 1NB, GB
			
	B 1710084.1		FA-Nr.: 000000

ALL DIMENSIONS ARE IN MILLIMETERS [INCH]		FIRST ANGLE PROJECTION 	SCALE 1.5:1	DRAWING SIZE A3	MATERIAL
					FINISH
				DESCRIPTION	
CHANGED				Sine-wave Filter 73.0A IP20	
DESIGNED				OF7S1-S-AN-25-73A0-070-TX-E20	
CHECKED				132H5078	
PROPERTY OF DANFOSS A/S NORDBOURG, DENMARK, TWO OR THREE DIMENSIONAL REPRODUCTION OF CONTENTS TO BE AUTHORIZED BY DANFOSS A/S.				MODEL: 132H5078	
				REV 004	SHEET 4 OF 4