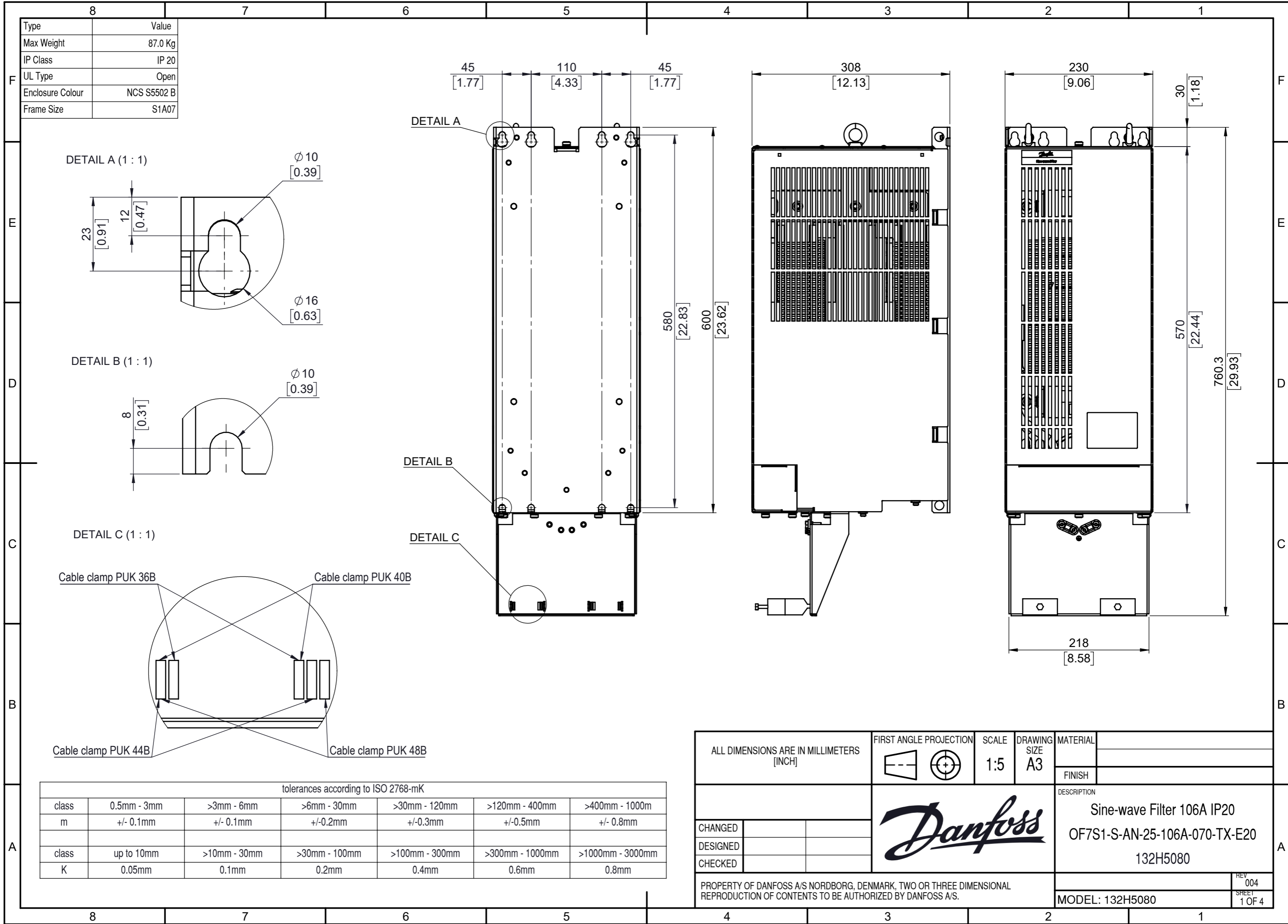
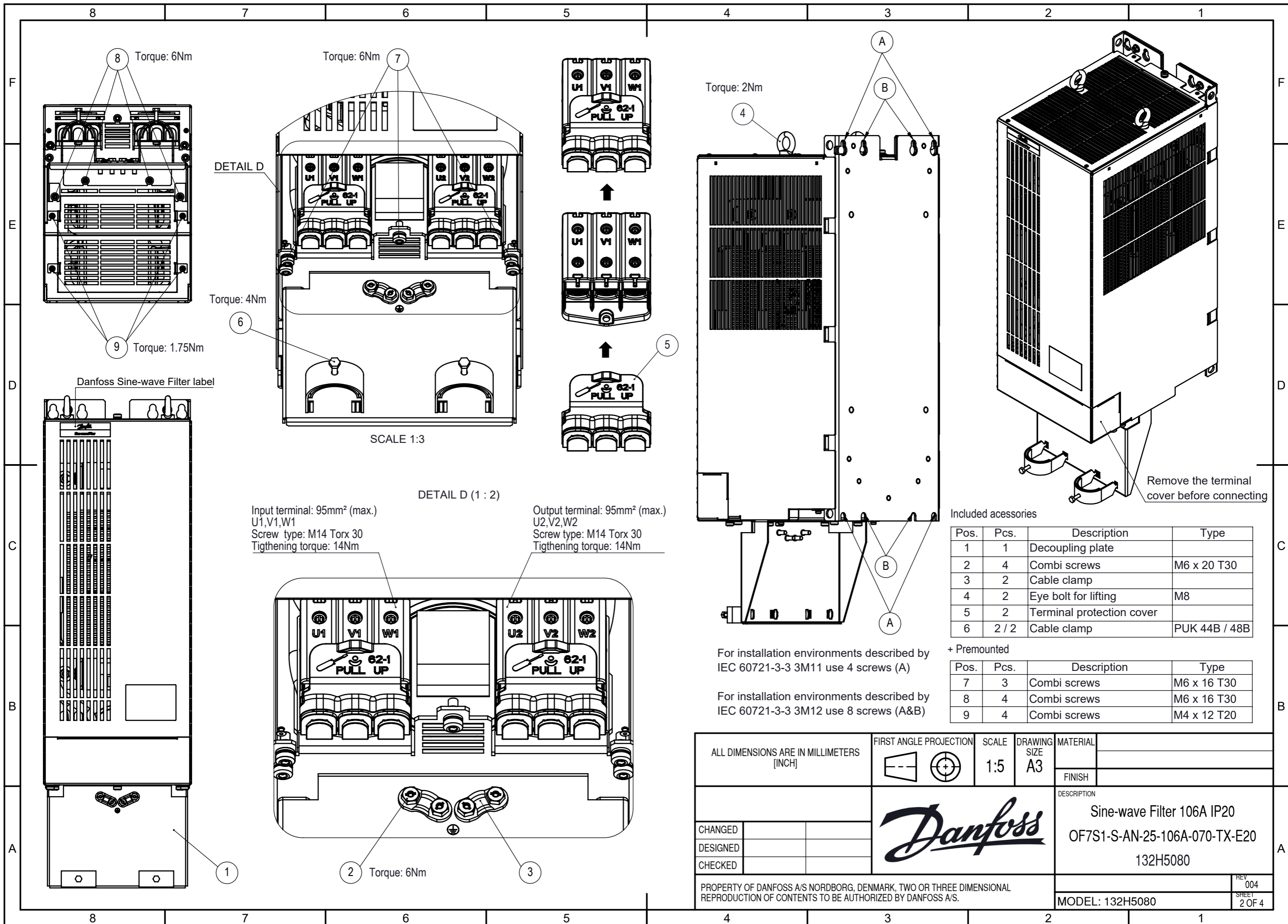


Type	Value
Max Weight	87.0 Kg
IP Class	IP 20
UL Type	Open
Enclosure Colour	NCS S5502 B
Frame Size	S1A07



tolerances according to ISO 2768-mK						
class	0.5mm - 3mm	>3mm - 6mm	>6mm - 30mm	>30mm - 120mm	>120mm - 400mm	>400mm - 1000mm
m	+/- 0.1mm	+/- 0.1mm	+/- 0.2mm	+/- 0.3mm	+/- 0.5mm	+/- 0.8mm
class	up to 10mm	>10mm - 30mm	>30mm - 100mm	>100mm - 300mm	>300mm - 1000mm	>1000mm - 3000mm
K	0.05mm	0.1mm	0.2mm	0.4mm	0.6mm	0.8mm

ALL DIMENSIONS ARE IN MILLIMETERS [INCH]		FIRST ANGLE PROJECTION	SCALE	DRAWING SIZE	MATERIAL
			1:5	A3	
		FINISH			
		DESCRIPTION			
		Sine-wave Filter 106A IP20			
		OF7S1-S-AN-25-106A-070-TX-E20			
		132H5080			
CHANGED					REV 004
DESIGNED					SHEET 1 OF 4
CHECKED					
PROPERTY OF DANFOSS A/S NORDBOG, DENMARK, TWO OR THREE DIMENSIONAL REPRODUCTION OF CONTENTS TO BE AUTHORIZED BY DANFOSS A/S.					
MODEL: 132H5080					



Included accessories

Pos.	Pcs.	Description	Type
1	1	Decoupling plate	
2	4	Combi screws	M6 x 20 T30
3	2	Cable clamp	
4	2	Eye bolt for lifting	M8
5	2	Terminal protection cover	
6	2 / 2	Cable clamp	PUK 44B / 48B

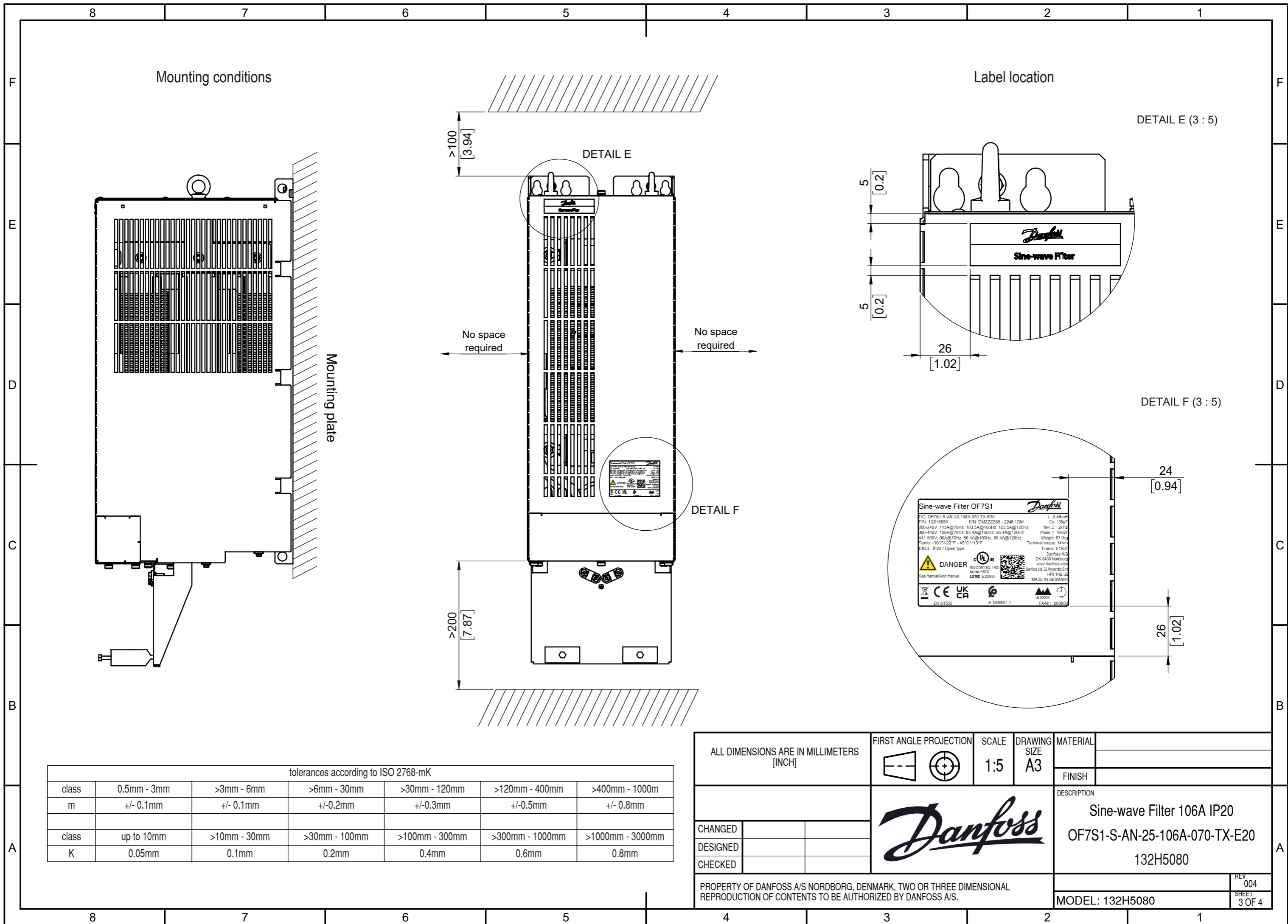
+ Premounted

Pos.	Pcs.	Description	Type
7	3	Combi screws	M6 x 16 T30
8	4	Combi screws	M6 x 16 T30
9	4	Combi screws	M4 x 12 T20

For installation environments described by IEC 60721-3-3 3M11 use 4 screws (A)

For installation environments described by IEC 60721-3-3 3M12 use 8 screws (A&B)

ALL DIMENSIONS ARE IN MILLIMETERS [INCH]		FIRST ANGLE PROJECTION	SCALE 1:5	DRAWING SIZE A3	MATERIAL
CHANGED				FINISH	
DESIGNED				DESCRIPTION	
CHECKED				Sine-wave Filter 106A IP20 OF7S1-S-AN-25-106A-070-TX-E20 132H5080	
PROPERTY OF DANFOSS A/S NORDBOURG, DENMARK, TWO OR THREE DIMENSIONAL REPRODUCTION OF CONTENTS TO BE AUTHORIZED BY DANFOSS A/S.					MODEL: 132H5080
					REV 004
					SHEET 2 OF 4



tolerances according to ISO 2768-mK

class	0.5mm - 3mm	>3mm - 6mm	>6mm - 30mm	>30mm - 120mm	>120mm - 400mm	>400mm - 1000m
m	+/- 0.1mm	+/- 0.1mm	+/-0.2mm	+/-0.3mm	+/-0.5mm	+/- 0.8mm
class	up to 10mm	>10mm - 30mm	>30mm - 100mm	>100mm - 300mm	>300mm - 1000mm	>1000mm - 3000mm
K	0.05mm	0.1mm	0.2mm	0.4mm	0.6mm	0.8mm

ALL DIMENSIONS ARE IN MILLIMETERS [INCH]		FIRST ANGLE PROJECTION	SCALE	DRAWING SIZE	MATERIAL		
			1:5	A3			
					FINISH		
					DESCRIPTION		
					Sine-wave Filter 106A IP20 OF7S1-S-AN-25-106A-070-TX-E20 132H5080		
CHANGED					REV 004		
DESIGNED					SHEET 3 OF 4		
CHECKED							
PROPERTY OF DANFOSS A/S NORDBORG, DENMARK, TWO OR THREE DIMENSIONAL REPRODUCTION OF CONTENTS TO BE AUTHORIZED BY DANFOSS A/S.							
MODEL: 132H5080							

Product label (78x55.5mm)

<b>Sine-wave Filter OF7S1</b>			
T/C: OF7S1-S-AN-25-106A-070-TX-E20		L: 0.48mH	
P/N: 132H5080	S/N: DMZZZZ65 - 2246 / DM	Cy: 135µF	
200-240V, 115A@70Hz, 103.5A@100Hz, 103.5A@120Hz		fsw: ≥ 2kHz	
380-440V, 106A@70Hz, 95.4A@100Hz, 95.4A@120Hz		Ploss: ≤ 426W	
441-500V, 96A@70Hz, 86.4A@100Hz, 86.4A@120Hz		Weight: 87.0kg	
Tamb: -30°C/-22°F - 45°C/113°F		Terminal torque: 14Nm	
ENCL: IP20 / Open type		Frame: S1A07	
	<b>DANGER</b>		
See manual/Voir manuel		Danfoss A/S DK-6430 Nordborg www.danfoss.com	
		Danfoss Ltd. 22 Wycombe End, HP9 1NB, GB MADE IN GERMANY	
EN 61558	UK CA	B 1808061.1	FA-Nr.: 000000

Packaging label (100x59mm)

<b>Sine-wave Filter OF7S1</b>			
T/C: OF7S1-S-AN-25-106A-070-TX-E20		MADE IN GERMANY	
<b>P/N: 132H5080</b>			
S/N: DMZZZZ65 - 2245 / DM			
200-240V: 115A		Tstorage: -30°C/-22°F - 70°C/158°F	
380-440V: 106A		ENCL: IP20 / Open type	
441-500V: 96A		Frame: S1A07	
		Weight: 107.5kg	
		ZZZZ652245	
		EN61558	
		Danfoss A/S, DK-6430 Nordborg www.danfoss.com	
		Danfoss Ltd. 22 Wycombe End, HP9 1NB, GB	
	B 1808061.1		FA-Nr.: 000000

ALL DIMENSIONS ARE IN MILLIMETERS [INCH]		FIRST ANGLE PROJECTION 	SCALE 1.5:1	DRAWING SIZE A3	MATERIAL	
				FINISH		
				DESCRIPTION		
CHANGED				Sine-wave Filter 106A IP20		
DESIGNED				OF7S1-S-AN-25-106A-070-TX-E20		
CHECKED		132H5080				
PROPERTY OF DANFOSS A/S NORDBORG, DENMARK, TWO OR THREE DIMENSIONAL REPRODUCTION OF CONTENTS TO BE AUTHORIZED BY DANFOSS A/S.					MODEL: 132H5080	REV 004 SHEET 4 OF 4