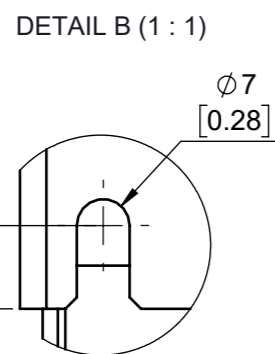
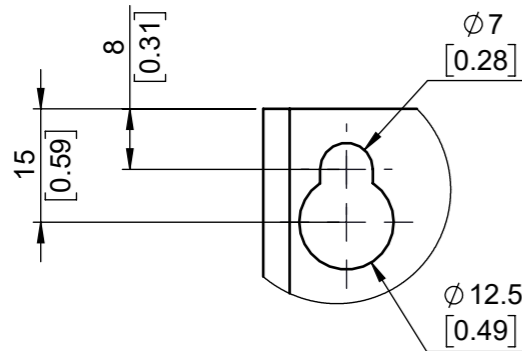
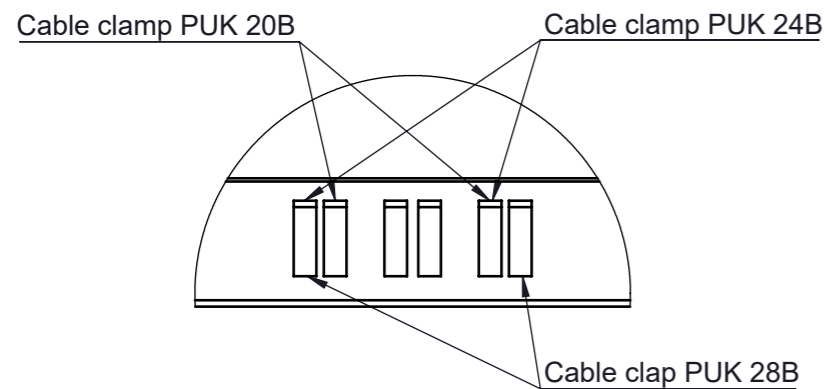


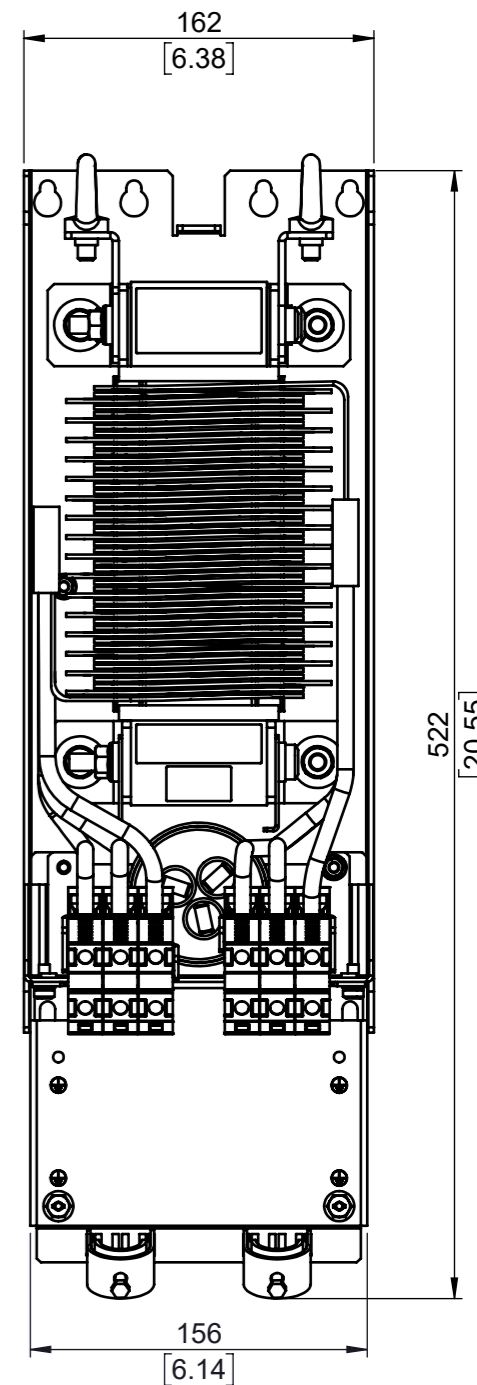
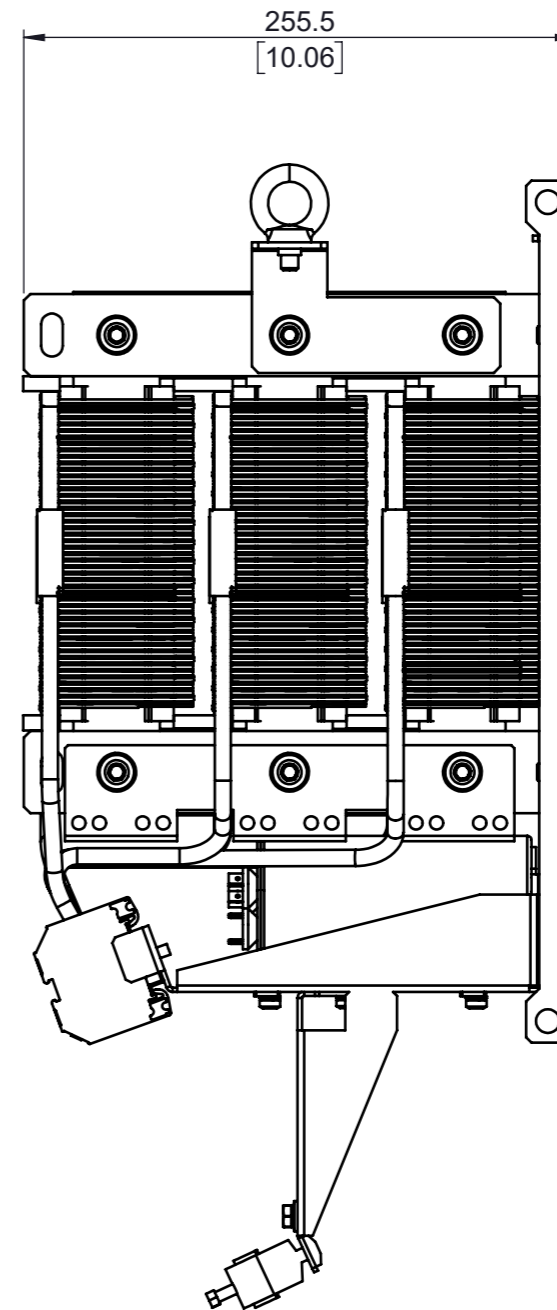
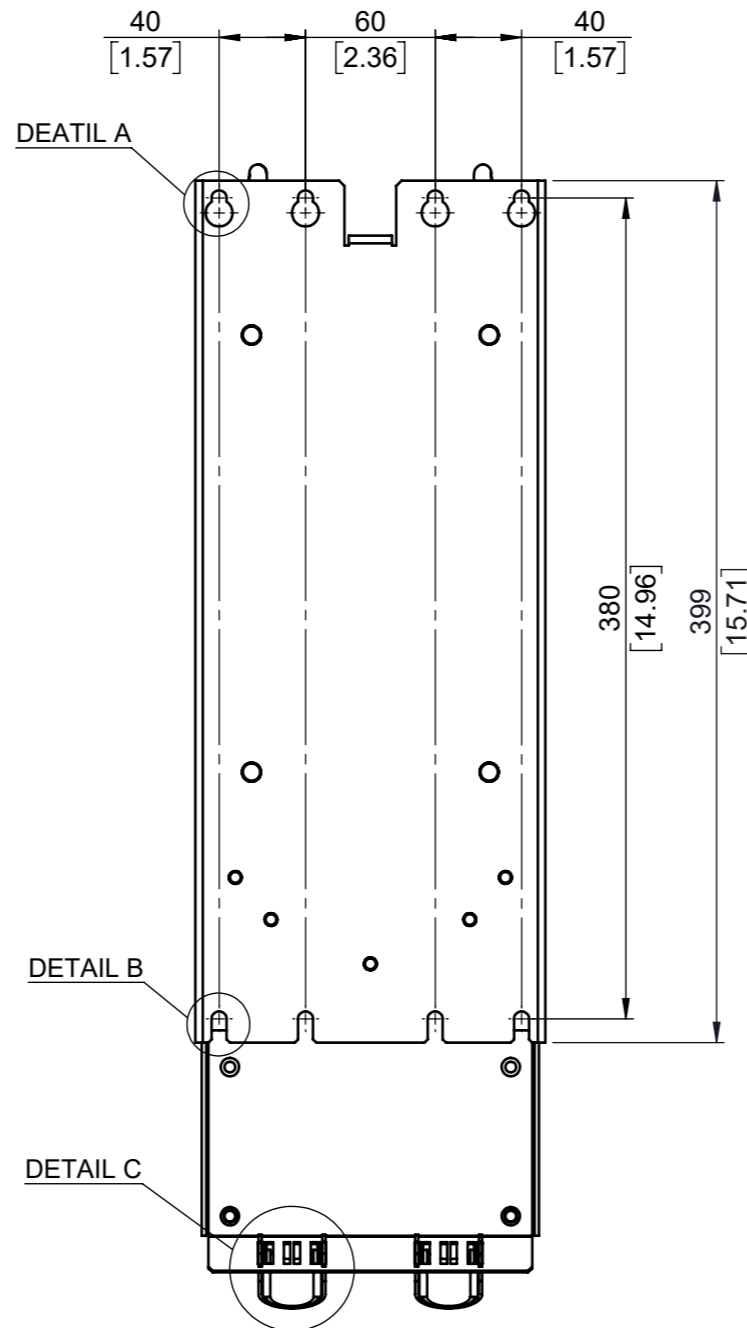
Type	Value
Max Weight	30.9 Kg
IP Class	IP 00
UL Type	Open
Frame Size	S1C05



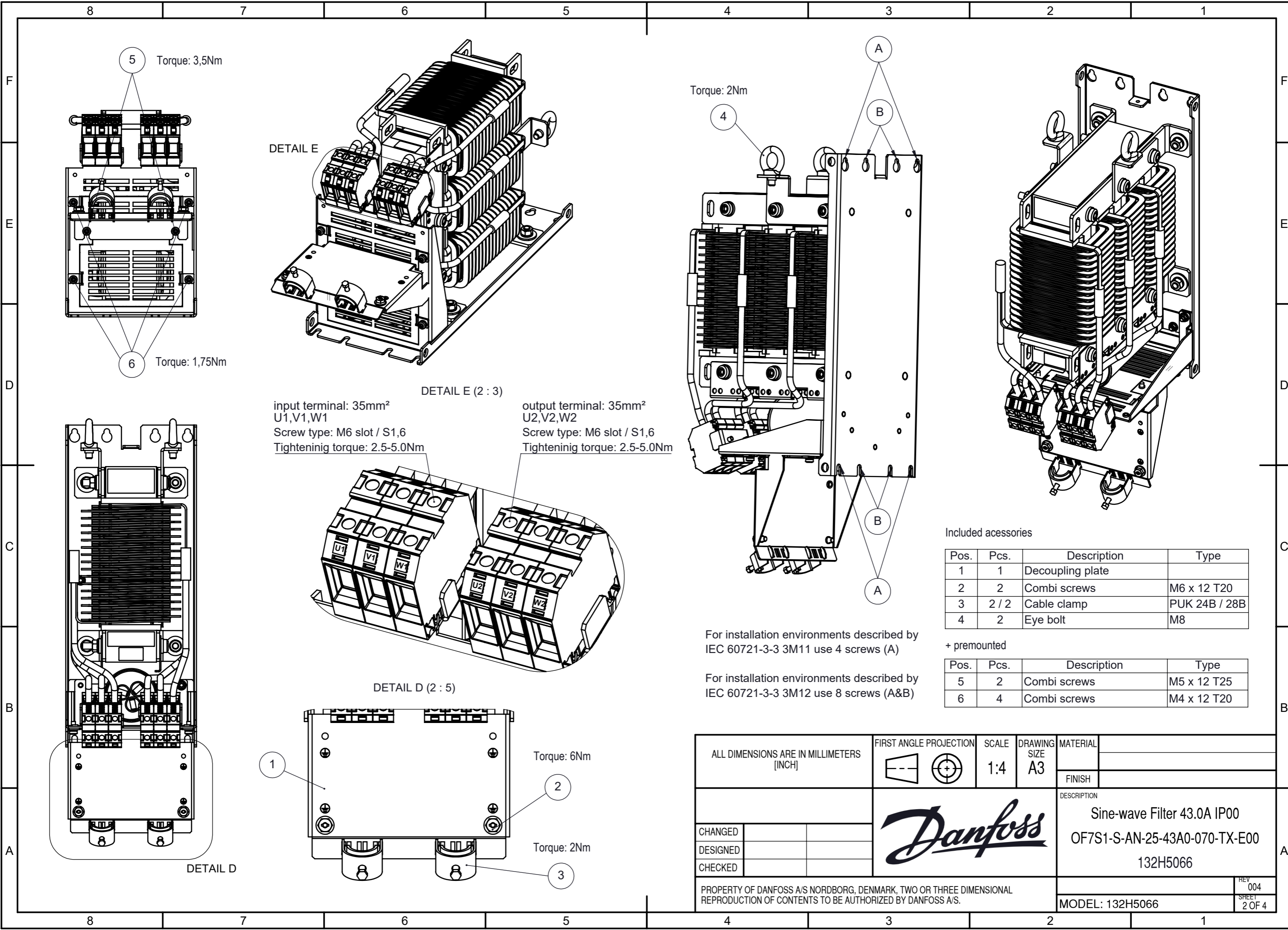
DETAIL C (1:1)



tolerances according to ISO 2768-mK						
class	0.5mm - 3mm	>3mm - 6mm	>6mm - 30mm	>30mm - 120mm	>120mm - 400mm	>400mm - 1000m
m	+/- 0.1mm	+/- 0.1mm	+/- 0.2mm	+/- 0.3mm	+/- 0.5mm	+/- 0.8mm
class	up to 10mm	>10mm - 30mm	>30mm - 100mm	>100mm - 300mm	>300mm - 1000mm	>1000mm - 3000mm
K	0.05mm	0.1mm	0.2mm	0.4mm	0.6mm	0.8mm



ALL DIMENSIONS ARE IN MILLIMETERS [INCH]		FIRST ANGLE PROJECTION	SCALE 1:3.5	DRAWING SIZE A3	MATERIAL
					FINISH
					DESCRIPTION
					Sine-wave Filter 43.0A IP00 OF7S1-S-AN-25-43A0-070-TX-E00 132H5066
CHANGED					REV 004
DESIGNED					SHEET 1 OF 4
CHECKED					
PROPERTY OF DANFOSS A/S NORDBOG, DENMARK, TWO OR THREE DIMENSIONAL REPRODUCTION OF CONTENTS TO BE AUTHORIZED BY DANFOSS A/S.					MODEL: 132H5066



5 Torque: 3,5Nm

DETAIL E

6 Torque: 1,75Nm

DETAIL E (2 : 3)

input terminal: 35mm<sup>2</sup>  
U1,V1,W1  
Screw type: M6 slot / S1,6  
Tightening torque: 2.5-5.0Nm

output terminal: 35mm<sup>2</sup>  
U2,V2,W2  
Screw type: M6 slot / S1,6  
Tightening torque: 2.5-5.0Nm

DETAIL D (2 : 5)

Torque: 6Nm

Torque: 2Nm

Torque: 2Nm

Included accessories

Pos.	Pcs.	Description	Type
1	1	Decoupling plate	
2	2	Combi screws	M6 x 12 T20
3	2 / 2	Cable clamp	PUK 24B / 28B
4	2	Eye bolt	M8

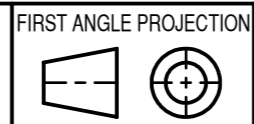
+ premounted

Pos.	Pcs.	Description	Type
5	2	Combi screws	M5 x 12 T25
6	4	Combi screws	M4 x 12 T20

For installation environments described by IEC 60721-3-3 3M11 use 4 screws (A)

For installation environments described by IEC 60721-3-3 3M12 use 8 screws (A&B)

ALL DIMENSIONS ARE IN MILLIMETERS [INCH]



SCALE 1:4  
DRAWING SIZE A3

MATERIAL	
FINISH	

CHANGED		
DESIGNED		
CHECKED		



DESCRIPTION  
Sine-wave Filter 43.0A IP00  
OF7S1-S-AN-25-43A0-070-TX-E00  
132H5066

PROPERTY OF DANFOSS A/S NORDBOURG, DENMARK, TWO OR THREE DIMENSIONAL REPRODUCTION OF CONTENTS TO BE AUTHORIZED BY DANFOSS A/S.

MODEL: 132H5066	REV 004 SHEET 2 OF 4
-----------------	-------------------------




**Product label (58x30mm)**


**Sine-wave FILTER OF7S1**  
 T/C: OF7S1-S-AN-25-43A0-070-TX-E00

**Danfoss**  
 L: 1.15mH, Cy: 27.0µF  
 fsw: ≥ 2.7kHz  
 Ploss: ≤ 253W  
 Weight: 30.9kg

P/N: 132H5066 S/N: DMZZZZ65 - 2224 / DM  
 200-240V, 46.2A@70Hz, 46.2A@100Hz, 46.2A@120Hz  
 380-440V, 43.0A@70Hz, 43.0A@100Hz, 43.0A@120Hz  
 441-500V, 40.0A@70Hz, 40.0A@100Hz, 40.0A@120Hz

Tamb: -30°C/-22°F - 45°C/113°F Terminal torque: 2.5-5Nm  
 ENCL: IP00 / Open type Frame: S1C05

 IND.CONT.EQ. 1HD1  
 ta(max)=45°C  
 LISTED E 223655

 B 1806055

DK-6430 Nordborg  
 www.danfoss.com  
 MADE IN GERMANY  
 FA-Nr.: 000000

**Product label (58x18mm)**

 EN61558

 Danfoss Ltd. 22 Wycombe End,  
 HP9 1NB, GB



≤ 5000m

**Product label (30x16mm)**



**DANGER**  
 See manual/Voir manuel

**Packaging label (100x59mm)**

**Sine-wave Filter OF7S1**  
 T/C: OF7S1-S-AN-25-43A0-070-TX-E00  
**P/N: 132H5066**  
 S/N: DMZZZZ65 - 2245 / DM

**Danfoss**  
 MADE IN GERMANY

 5 714853 340811  
  



200-240V: 46.2A Tstorage: -30°C/-22°F - 70°C/158°F  
 380-440V: 43.0A ENCL: IP00 / Open type  
 441-500V: 40.0A Frame: S1C05  
 Weight: 36.6kg

 ZZZZ652245

 EN61558  
 Danfoss A/S,  
 DK-6430 Nordborg  
 www.danfoss.com

  
 Danfoss Ltd. 22 Wycombe End,  
 HP9 1NB, GB

B 1806055 FA-Nr.: 000000

ALL DIMENSIONS ARE IN MILLIMETERS [INCH]		FIRST ANGLE PROJECTION 	SCALE 1.5:1	DRAWING SIZE A3	MATERIAL
CHANGED		<b>Danfoss</b>		FINISH	
DESIGNED				DESCRIPTION	
CHECKED				Sine-wave Filter 43.0A IP00 OF7S1-S-AN-25-43A0-070-TX-E00 132H5066	
PROPERTY OF DANFOSS A/S NORDBORG, DENMARK, TWO OR THREE DIMENSIONAL REPRODUCTION OF CONTENTS TO BE AUTHORIZED BY DANFOSS A/S.				MODEL: 132H5066	REV 004 SHEET 4 OF 4