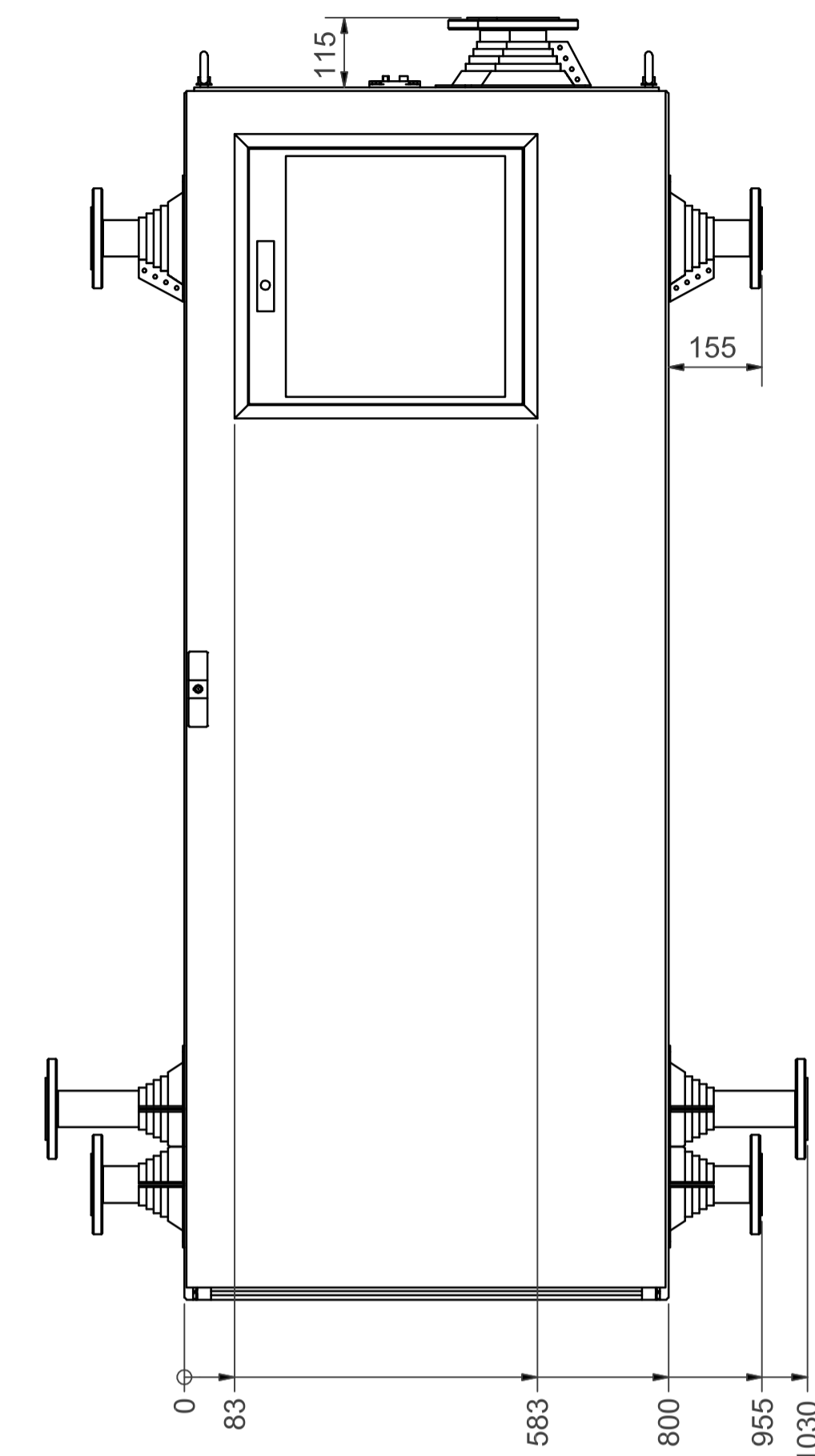
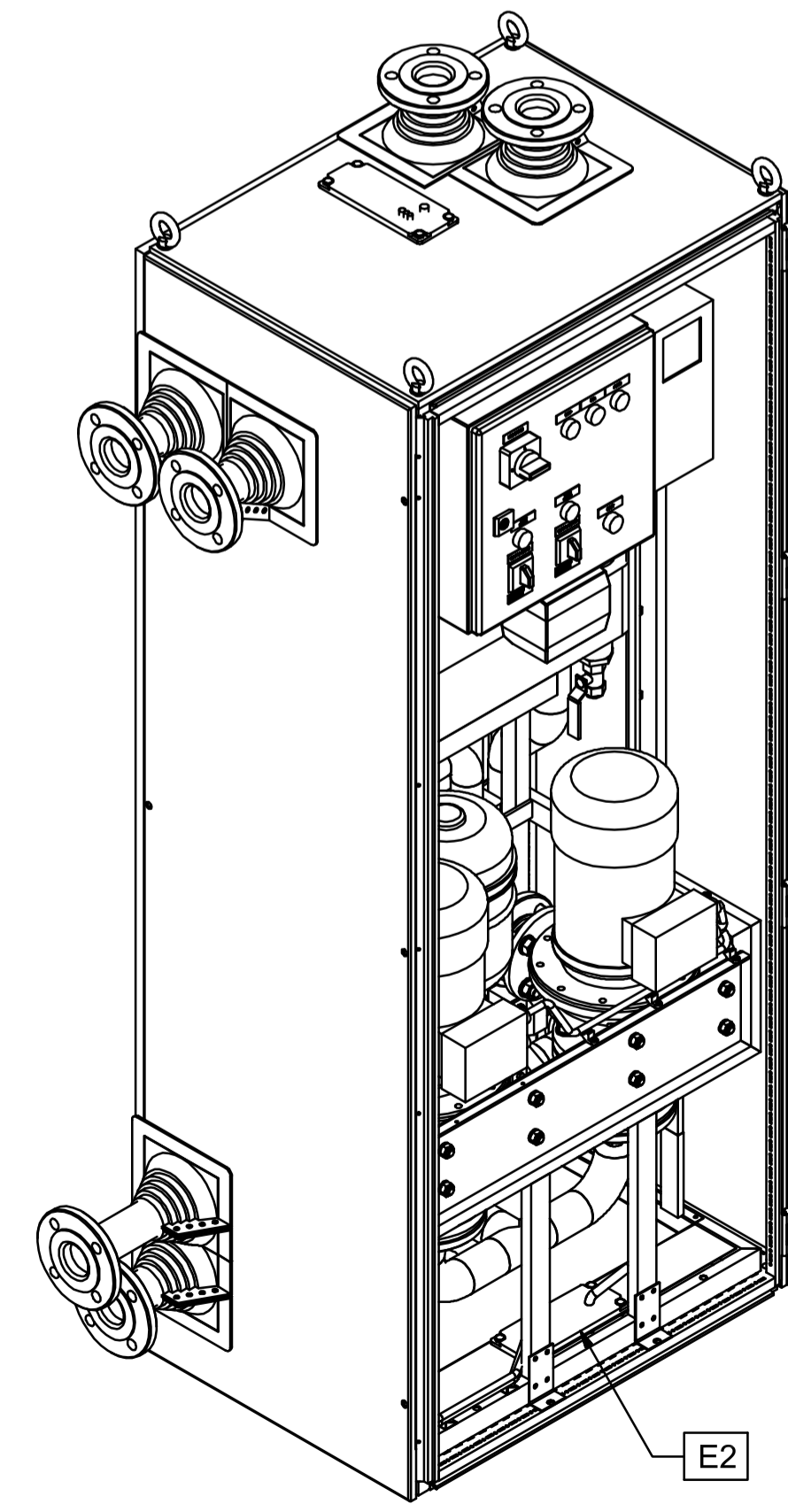
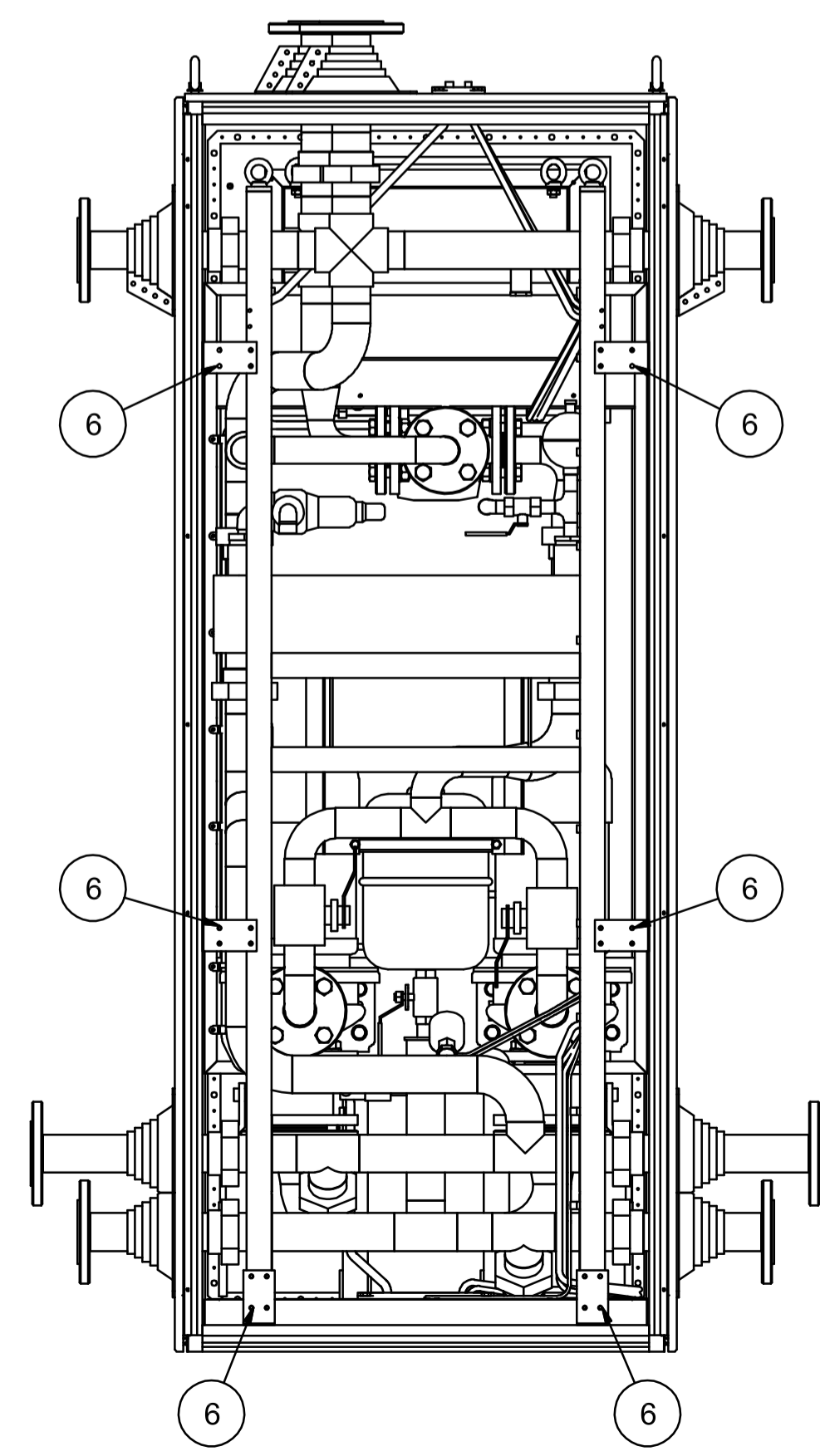
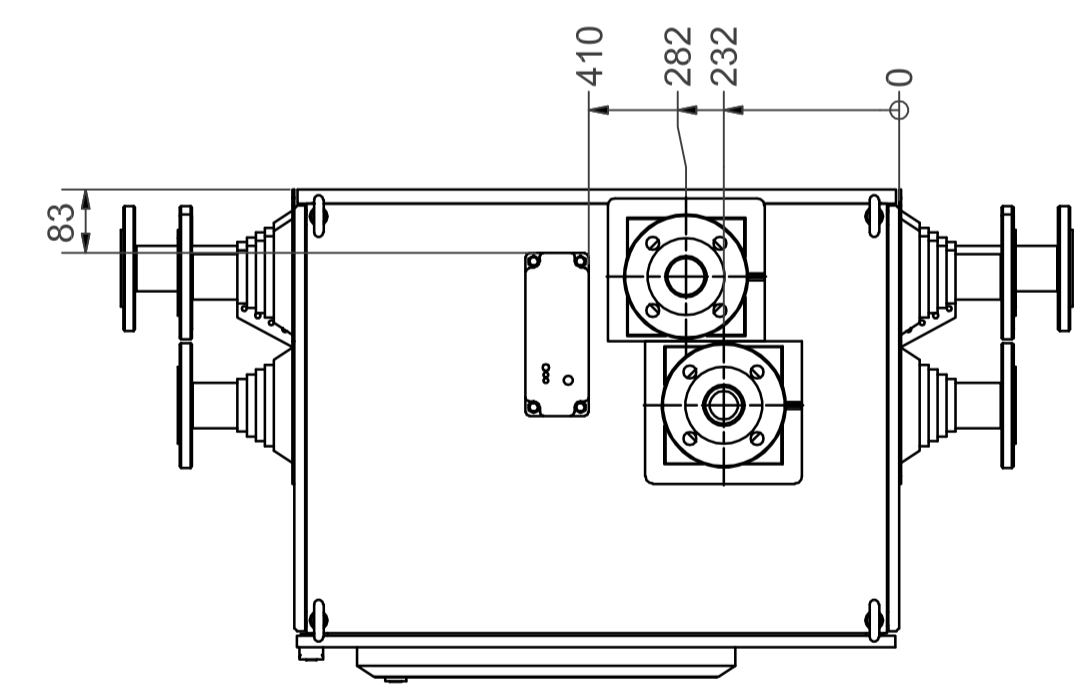
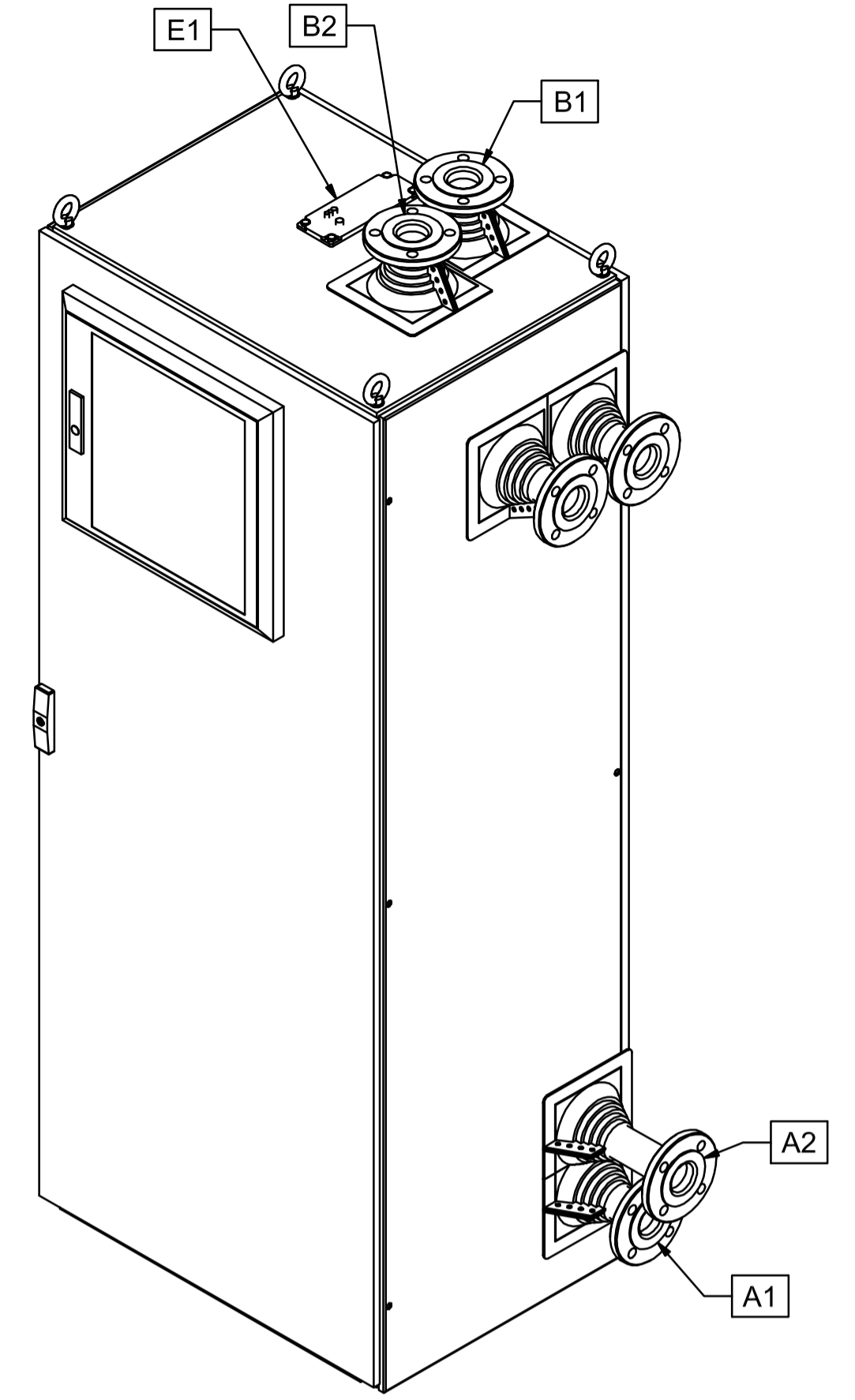
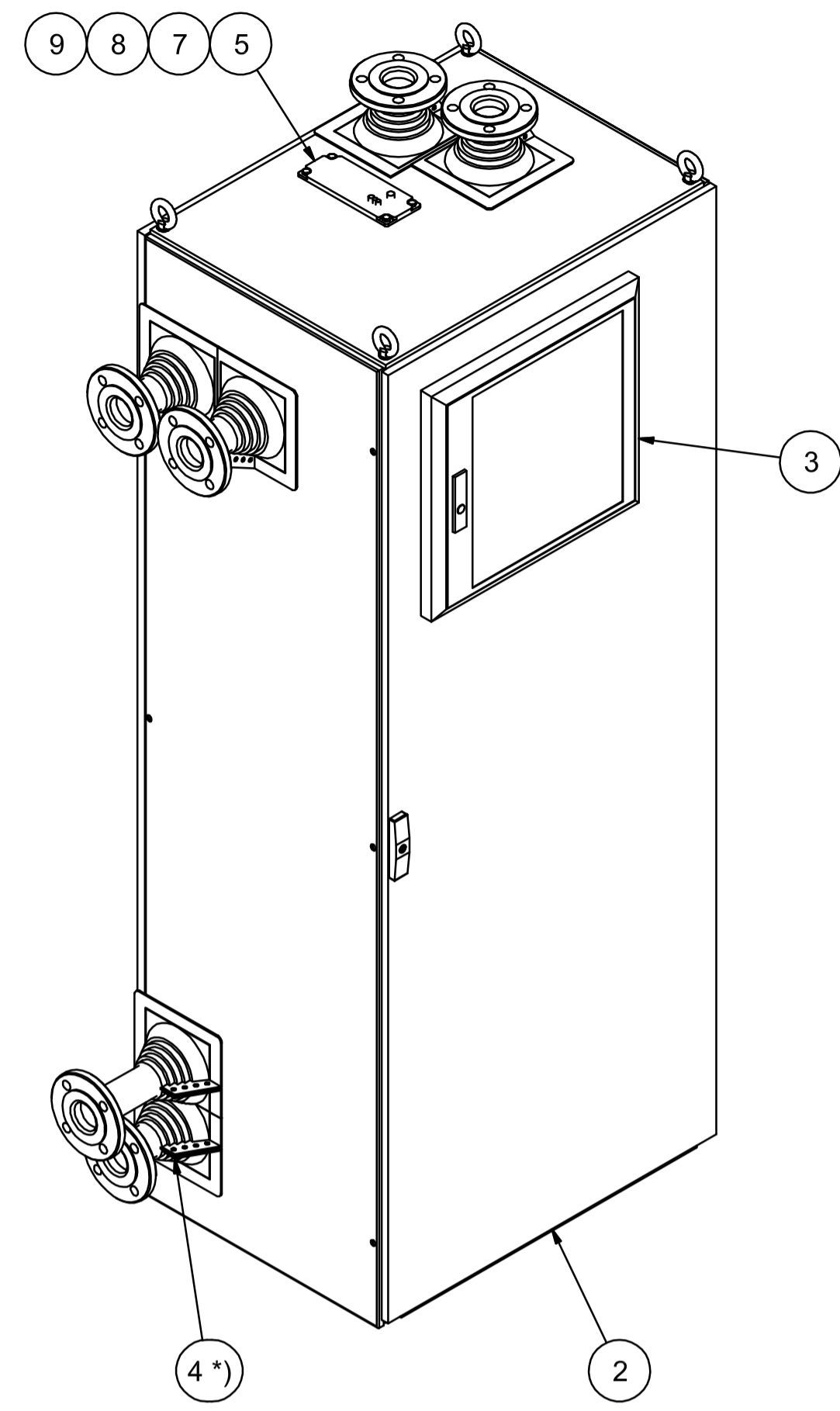
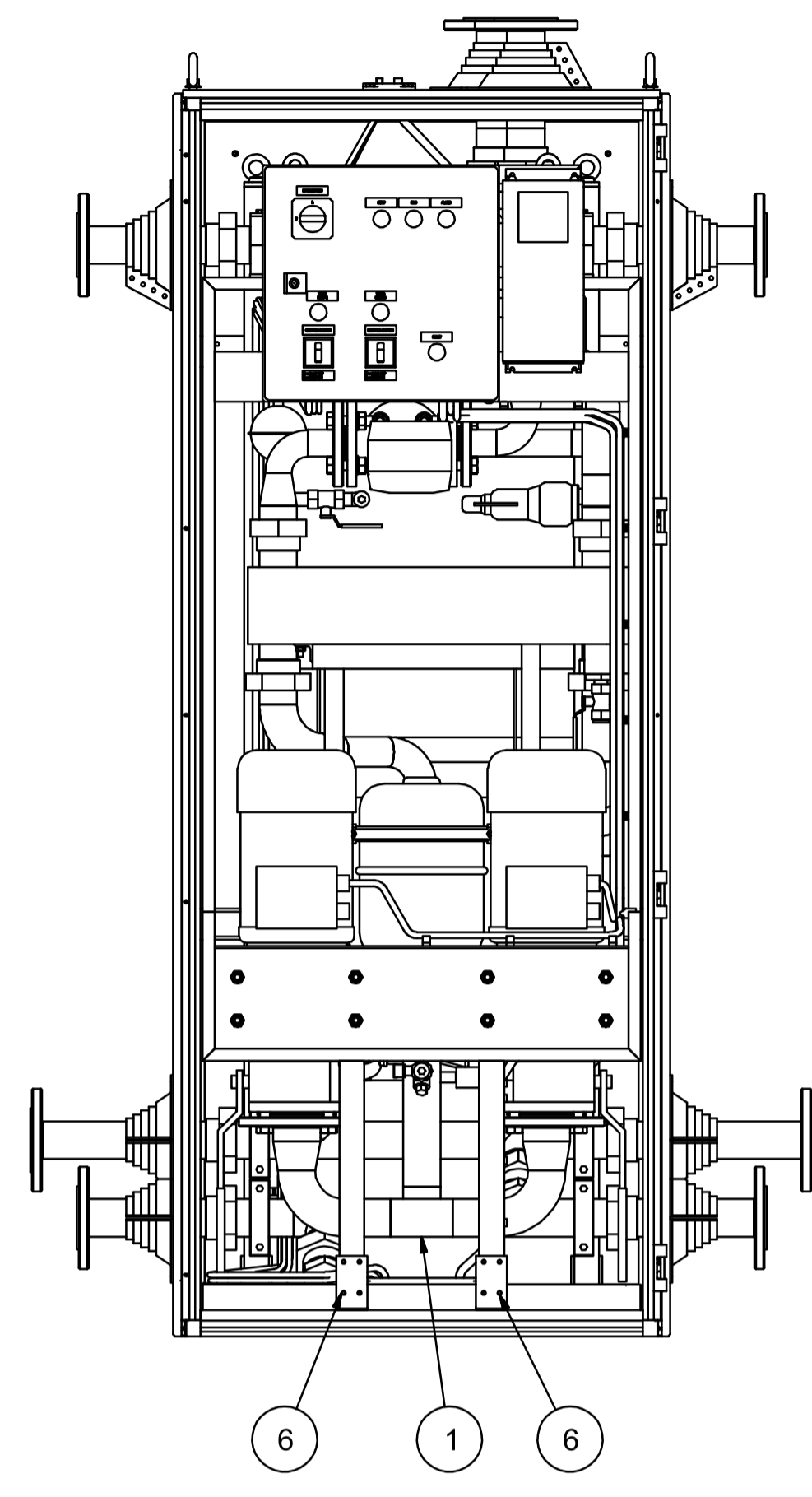


FRONT VIEW



FRONT VIEW OPEN DOOR



*) NOTE:
See Retrofit assembly and dimensional drawing VL39-5003-07.

See Rittal openings drawing VL39-5003-06.

NOZZLE DATA		SIZE
A1	FROM DRIVE	DN50
A2	TO DRIVE	DN50
B1	INLET CUSTOMER	DN50
B2	OUTLET CUSTOMER	DN50
E1	ELECTRICAL CONNECTION, Alternative 1	MC25
E2	ELECTRICAL CONNECTION, Alternative 2	MC25

Delivery includes flange connections to primary (2 pcs) and secondary (2 pcs) circuits. The directions of connections can be chosen according to the installation.

REVISION HISTORY				
REV	DESCRIPTION	DATE	BY	APPROVED
a	Misc.	28.08.2007	A-M. Haka	J-P. Sampola

Part no.	Qty.	Part name, type and/or measures	Standard/Draw. no.	Material	Weight/pc
9	4	Washer A6,4	DIN 125	Zn	-
8	4	Hex nut M8	DIN 934	8 Zn	-
7	4	Hex-Head Bolt M8 x 18	DIN 933	8.8 Zn	-
6	8	Fastener	-	-	-
5	1	Multigate MC25	Mar-Con	-	-
4 *)	-	Retrofit Master Flash#1, 1/2"-4", Aztec Nordic	RF101B	Black EPDM	-
3	1	System window 500x470x33, Rittal	FT 2735.520	-	-
2	1	Cubicle TS8 800x2000x600	Rittal	-	-
1	1	HXM120	VL39-5033-05	-	-

GENERAL TOLERANCES ISO 2768-c	DRAWING NAME HXM120 RITTAL	CUSTOMER VACON OYJ
	DRAWING TYPE Assembly drawing	PROJECT NAME STD HX-unit
	PROJECT NUMBER HXM-R-120-N-S	CUSTOMER PROJECT NUMBER -
	DATE 24.10.2006	SCALE 1:10
	DESIGNED BY A-M. Haka	REV. NO. VL39-5033-10.000
	CHECKED BY U. Kähtävä	REV. -
	APPROVED BY J-P. Sampola	SIZE A1