

## Installation Instructions

# VLT<sup>®</sup> AutomationDrive FC 360 Graphical LCP Adapter

By using the adapter, the VLT<sup>®</sup> Control Panel LCP 102 can be connected to the FC 360 via a cable.

### Safety Instructions

#### **⚠ WARNING**

##### DISCHARGE TIME

Frequency converters contain DC-link capacitors that can remain charged even when the frequency converter is not powered. To avoid electrical hazards, disconnect AC mains, any permanent magnet type motors, and any remote DC-link power supplies, including battery backups, UPS and DC-link connections to other frequency converters. Wait for the capacitors to fully discharge before performing any service or repair work. The amount of wait time is listed in the *Discharge Time* table. Failure to wait the specified time after power has been removed before doing service or repair could result in death or serious injury.

Voltage [V]	Minimum waiting time [minutes]	
	4	15
380-480	0.37-7.5 kW	11-22 kW

Table 1.1 Discharge Time

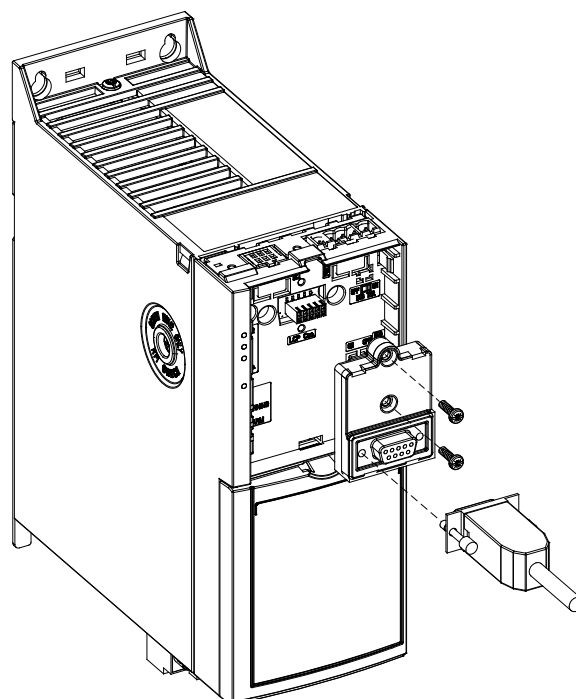
### Scope of Delivery

- GLCP Adapter
- 2 screws

Code number of the panel mounting kit is 130B1113. The kit includes graphical LCP, fasteners, 3 m cable and gasket.

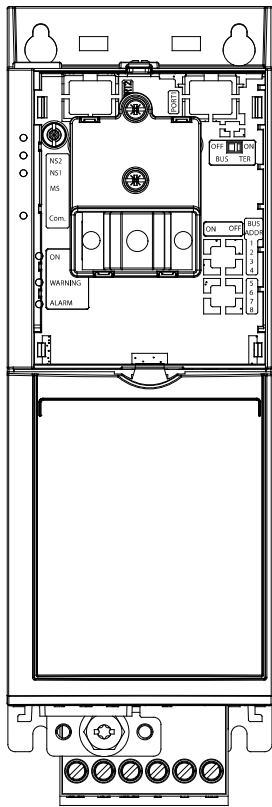
### Mounting the Option

Mount the option according to *Illustration 1.1* and *Illustration 1.2*.



130BD532.10

Illustration 1.1 Location of Adapter



1308D533.10

Illustration 1.2 Front View

Danfoss can accept no responsibility for possible errors in catalogues, brochures and other printed material. Danfoss reserves the right to alter its products without notice. This also applies to products already on order provided that such alterations can be made without subsequential changes being necessary in specifications already agreed. All trademarks in this material are property of the respective companies. Danfoss and the Danfoss logotype are trademarks of Danfoss A/S. All rights reserved.

