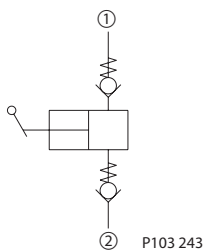


OPERATION

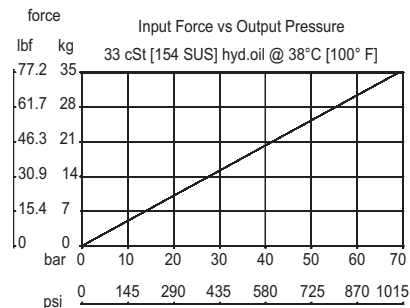
This is a manually operated uni-directional pump.

SPECIFICATIONS

Schematic



Specifications

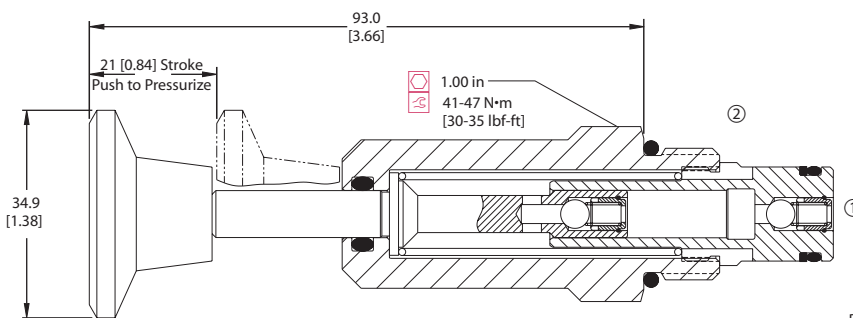


Specifications

Pressure rating	207 bar [3000 psi]
Displacement	1.2 cu. cm [0.07 cu. in.]/stroke
Leakage	6 drops/min @ rated pressure
Weight	0.24 kg [0.52 lbs]
Cavity	SDC 10-2
Pump force	34N [7.7lbs]

DIMENSIONS

mm [in]



ORDERING INFORMATION

CP600-5-B-6S			
Seals		Housing & Ports	Housing P/N
B = Buna-N	Seal kit 120015	0 = Cartridge only	No Housing
V = Viton	120016	6S = AL, #6 SAE	CP10-2-6S
		8S = AL, #8 SAE	CP10-2-8S
		DG3B = AL, 3/8 BSPP	SDC10-2-DG-3B
		DG4B = AL, 1/2 BSPP	SDC10-2-DG-4B
		Other housings available	

P103 132E

Accessories
 CP600-5 pump