

**OPERATION**

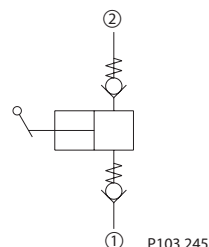
Manually operated pump.

**SPECIFICATIONS**

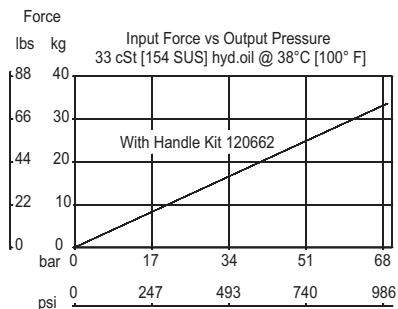
Specifications

<b>Pressure rating</b>	207 bar [3000 psi]
<b>Displacement</b>	9.2 cm <sup>3</sup> [0.56 in <sup>3</sup> ] / stroke
<b>Leakage</b>	6 drops/ minute @ rated pressure
<b>Cavity</b>	SDC16-2

Schematic



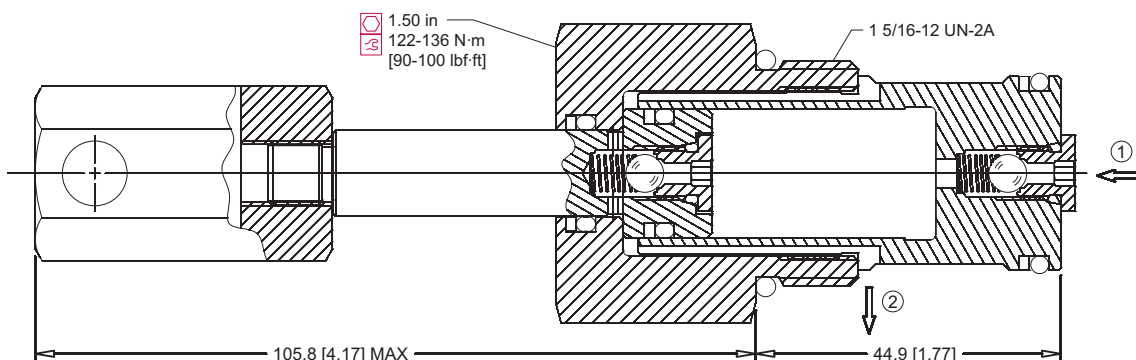
Performance graph



**DIMENSIONS**

mm [in]

Cross section



**ORDERING INFORMATION**

CP602-5-B-12S

Seals — Seal kit — Housing and Ports

B = Buna-N 120019  
V = Viton 120030

0 = No Housing  
6S = #6 SAE  
8S = #8 SAE  
12S = AL#12 SAE  
16S = AL#16 SAE  
6B = AL 3/4 BSPP  
8B = AL 1 BSPP

Other housings available

Handle kit is required  
- sold separately PN - 120662

Housing P/N  
No Housing  
11083731  
11083691  
CP16-2-12S  
CP16-2-16S  
CP16-2-6B  
CP16-2-8B

P103 133E