

**OPERATION**

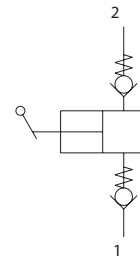
This is a manually operated uni-directional pump. These small displacement hand pumps are used typically for piloting the operation of small hydraulic cylinders or valves. These pumps can be mounted inline using the standard housing or in custom HICs. For smooth operation, inlet lines should not be excessively long, and the vertical distance between pump and tank level no more than 300 mm (12 inch).

These pumps can work in outdoor applications if the ambient air is not contaminated by powder and dust.

**SPECIFICATIONS**

<b>Size</b>		06
<b>Displacement Per Stroke</b>	<b>cm<sup>3</sup></b>	0.94
	<b>[in<sup>3</sup>]</b>	[0.057]
<b>Max. pressure</b>	<b>bar</b>	315
	<b>[psi]</b>	[4569]
<b>NCS Cavity</b>		NCS06/2
<b>Max tightening torque</b>	<b>Nm</b>	40
	<b>[lb·in]</b>	[354]
<b>Weight</b>	<b>cartridge</b>	<b>kg</b> [lb]
	<b>cartridge with handle</b>	<b>kg</b> [lb]
	<b>with housing</b>	<b>kg</b> [lb]
		0.254 [0.560] 0.550 [1.213] 0.854 [1.883]

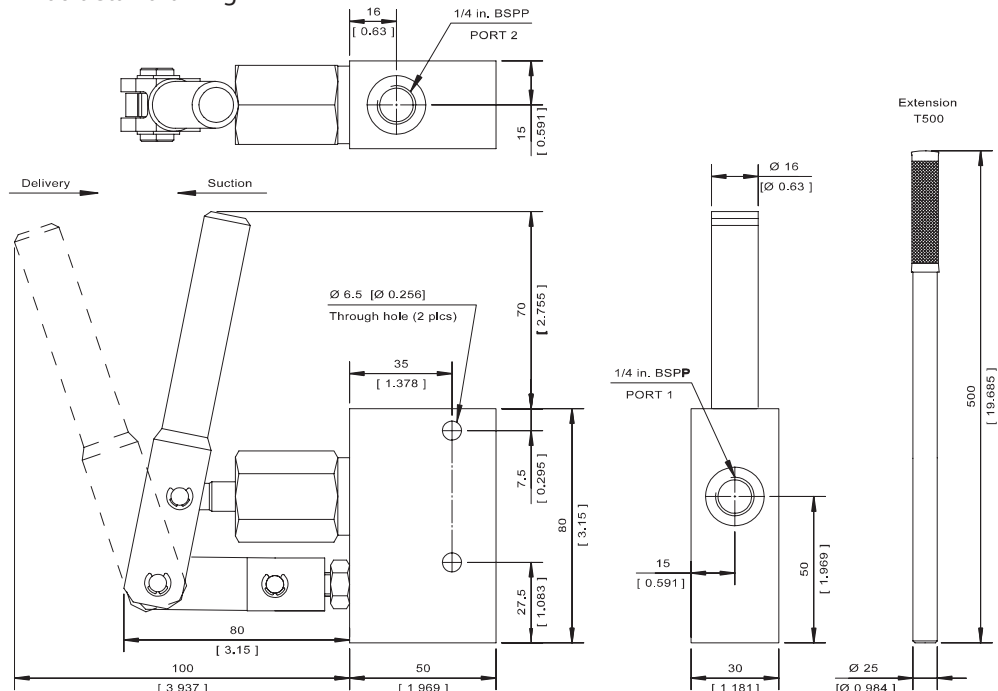
**SCHEMATIC**



**DIMENSIONS**

mm [in]

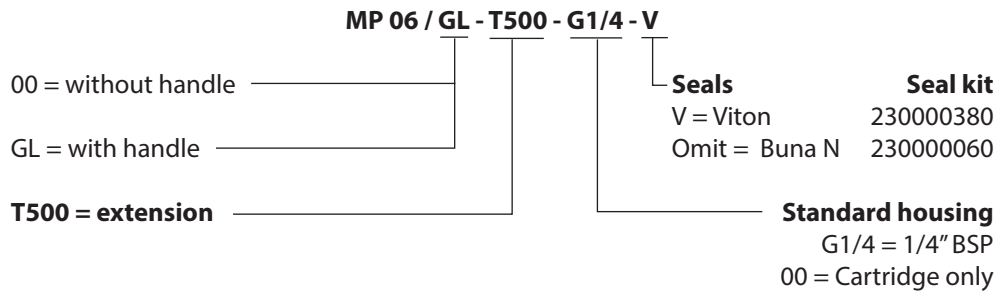
MP06 detail drawing



AC - Accessories  
 MP 06 Hand Pumps

**ORDERING  
 INFORMATION**

**Example of designation MP 06**



Housing Part #502500313

**OPERATION**

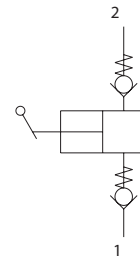
This is a manually operated uni-directional pump. These small displacement hand pumps are used typically for piloting the operation of small hydraulic cylinders or valves. These pumps can be mounted inline using the standard housing or in custom HICs. For smooth operation, inlet lines should not be excessively long, and the vertical distance between pump and tank level no more than 300 mm (12 inch).

These pumps can work in outdoor applications if the ambient air is not contaminated by powder and dust.

**SPECIFICATIONS**

<b>Size</b>		12
<b>Displacement Per Stroke</b>	<b>cm<sup>3</sup> [in<sup>3</sup>]</b>	5 [0.305]
<b>Max. pressure</b>	<b>bar [psi]</b>	315 [4569]
<b>NCS Cavity</b>		NCS12/2
<b>Max tightening torque</b>	<b>Nm [lbf·in]</b>	80 [708]

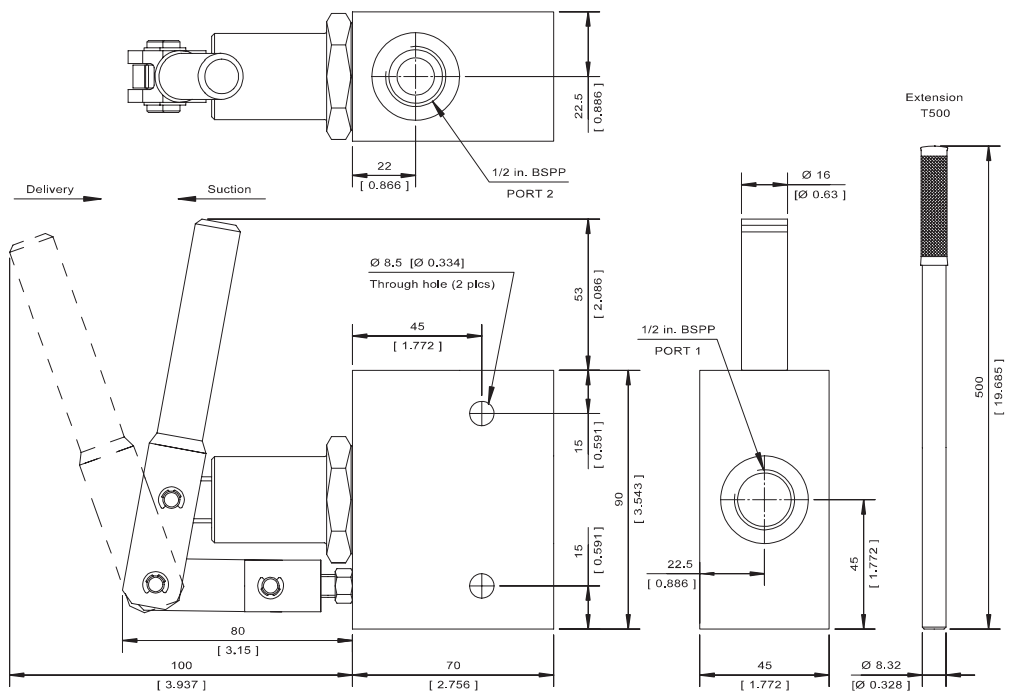
**SCHEMATIC**



**DIMENSIONS**

mm [in]

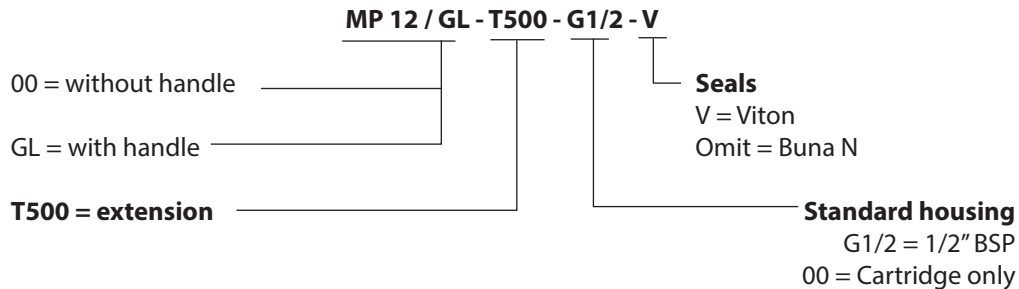
MP12 detail drawing



AC - Accessories  
 MP 12 Hand Pumps

**ORDERING  
 INFORMATION**

**Example of designation MP 12**



Housing Part #502500613