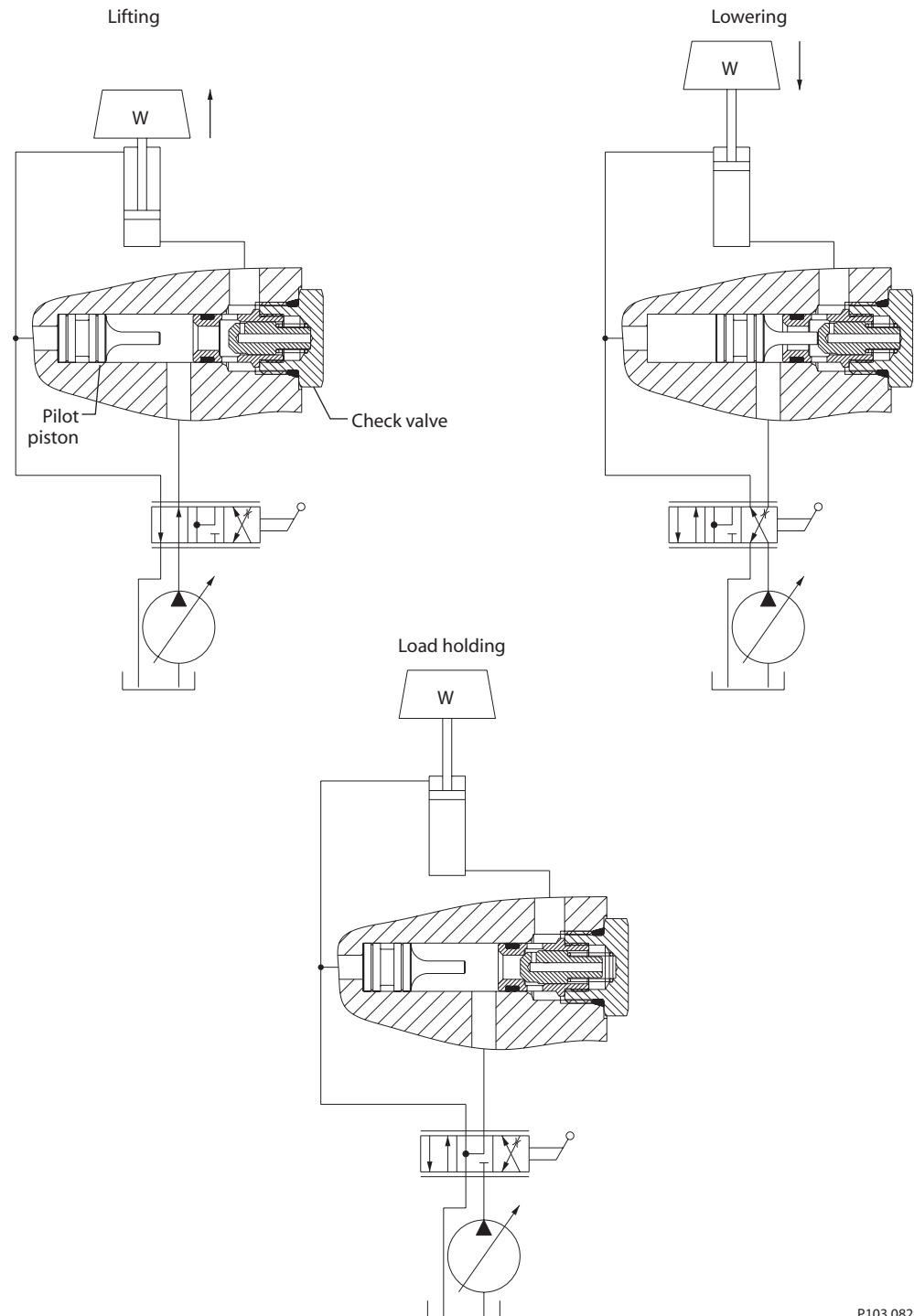


OPERATION

Pilot pistons used with check valve cartridges are an economical way to create pilot-operated check valve functions in custom Hydraulic Integrated Circuits (HIC).

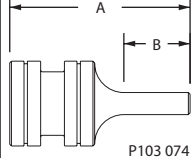
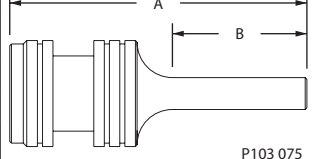
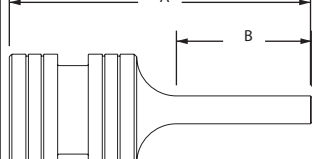
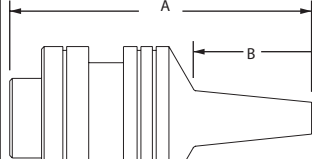
EXAMPLE

Application of pilot pistons



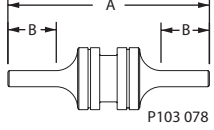
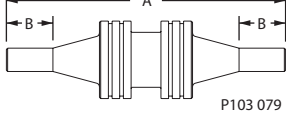
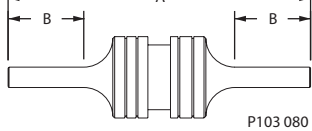
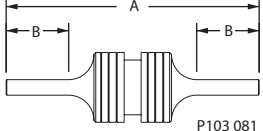
Accessories
 Pilot pistons

Single-acting pilot pistons

Series	Compatible valves	Pilot ratio	Seals (optional)	Pilot piston order code	A mm [in]	B mm [in]	Bore diameter* mm [in]	
8	CV08-NP	4:1	1) 720092 O-rings 2) 720500 back-up rings	621460	26.97 [1.062]	14.27 [0.562]	Ø 12.70 ± 0.03 [0.501 ± 0.001]	 P103 074
10	CV10-NP	4:1	1) 720178 O-ring 2) 720412 back-up rings	621175	44.45 [1.750]	25.40 [1.000]	Ø 15.90 ± 0.03 [0.626 ± 0.001]	 P103 075
	CP100-3	2.5:1		621176	47.63 [1.875]	28.58 [1.125]		
		621535		38.10 [1.500]	19.05 [0.750]			
12	CP101-1	4:1	1) 720031 O-ring 2) 720385 back-up rings	621538	60.33 [2.375]	34.93 [1.375]	Ø 22.25 ± 0.03 [0.876 ± 0.001]	 P103 076
16	CP102-1	4:1	1) 720033 O-ring 2) 720375 back-up rings	620600	60.20 [2.370]	23.55 [0.927]	Ø 28.63 ± 0.03 [1.127 ± 0.001]	 P103 077

Consult factory for bore details.

Double-acting pilot pistons

Series	Compatible valves	Pilot ratio	Seals (optional)	Pilot piston order code	A mm [in]	B mm [in]	Bore diameter* mm [in]	
8	CV08-NP	4:1	1) 720092 O-rings 2) 720500 back-up rings	621457	41.28 [1.625]	14.27 [0.562]	Ø 12.70 ± 0.03 [0.501 ± 0.001]	
				621553	52.37 [2.062]	19.84 [0.781]		
				625138	38.10 [1.500]	12.70 [0.500]		
				625298	49.53 [1.950]	18.42 [0.725]		
10	CV10-NP	4:1	1) 720178 O-ring 2) 720412 back-up rings	621058	60.50 [2.382]	20.73 [0.816]	Ø 15.90 ± 0.03 [0.626 ± 0.001]	
				621400	57.15 [2.250]	19.05 [0.750]		
	CP100-3	2.5:1		621692	69.85 [2.750]	25.40 [1.000]		
	625104			66.04 [2.600]	23.50 [0.925]			
12	CP101-1	4:1	1) 720031 O-ring 2) 720385 back-up rings	621539	82.55 [3.250]	28.58 [1.125]	Ø 22.25 ± 0.03 [0.876 ± 0.001]	
16	CP102-1	4:1	1) 720033 O-ring 2) 720375 back-up rings	621540	XXX	XXX	Ø 28.63 ± 0.03 [1.127 ± 0.001]	

Consult factory for bore details.