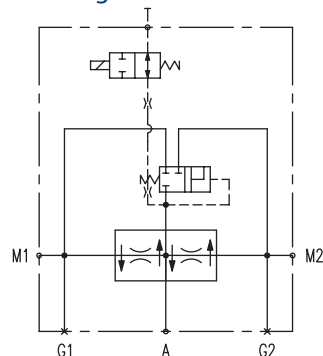


**OPERATION**

This valve provides electrically actuated traction control for hydrostatic systems with one pump and two motors in parallel. In normal operation, fluid passes freely through the valve. When the solenoid is energized, fluid is forced through the flow divider/combiner, preventing wheel spin or motor over speed.

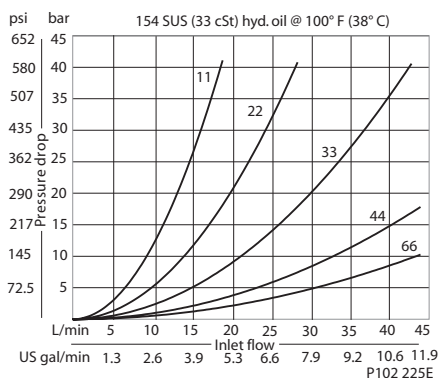
**Schematic diagram**



P104 584

**PERFORMANCE**

**Performance curve**

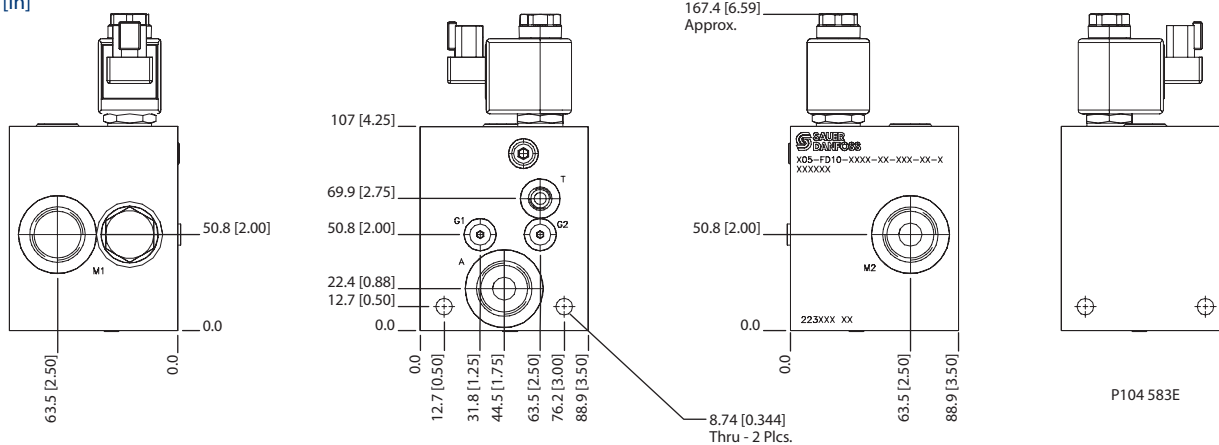


**Specifications**

<b>Rated pressure</b>	210 bar [3000 psi]
<b>Rated flow at 7 bar [100 psi]</b>	45 l/min [12 US gal/min]
<b>Weight</b>	2.79 kg [6.15 lb]

**DIMENSIONS**

mm [in]



**ORDERING INFORMATION**

X05-FD10-12S-66-12-DE-B

PORT SIZES & MATERIAL  
6061 T6 ALUMINUM  
8S = M1, M2 & A - #8 SAE  
C1 & G2 - #2 SAE  
T - #4 SAE  
12S = M1, M2 & A - #12 SAE  
C1 & G2 - #2 SAE  
T - #4 SAE  
4B = M1, M2 & A - 1/2 BSP  
G1 & G2 - 1/8 BSP  
T - 1/4 BSP  
6B = M1, M2 & A - 3/4 BSP  
C1 & G2 - 1/8 BSP  
T - 1/4 BSP

SEALS  
B = BUNA-N  
V = VITON

TERMINATION

VOLTAGE

SEE CATALOG FOR SV08-22-01

FLOW DIVISION

SEE CATALOG FOR CP340-1

P104 585

Accessories  
X05-FD10