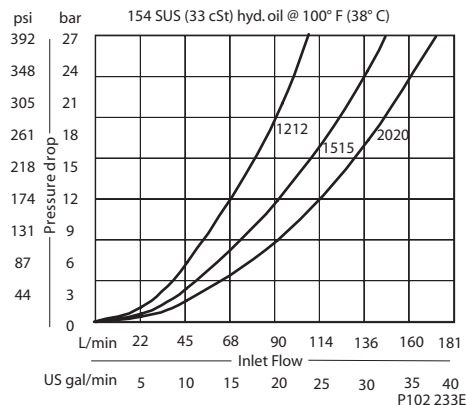


OPERATION

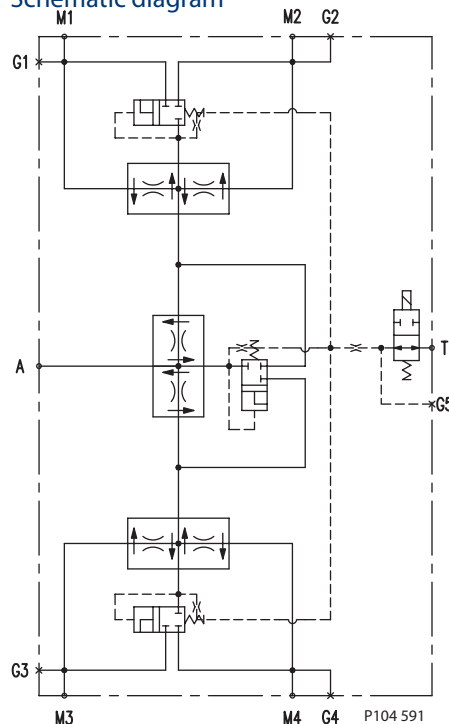
This valve provides electrically actuated traction control for hydrostatic systems with one pump and four motors in parallel. In normal operation, fluid passes freely through the valve. When the solenoid is energized, fluid is forced through the flow divider/combiners. The result is equal flow to all four motors, preventing wheel spin or motor over speed.

PERFORMANCE

Performance curve



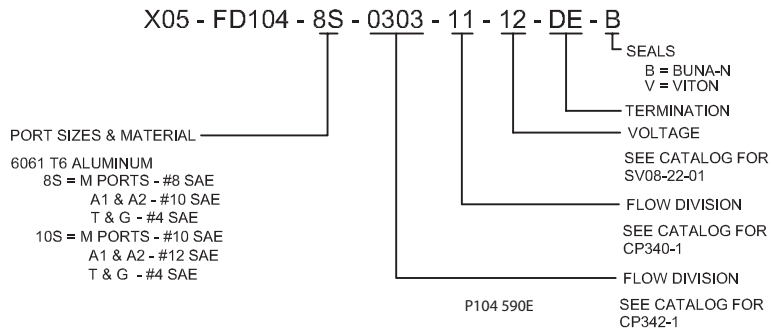
Schematic diagram



Specifications

Rated pressure	230 bar [3300 psi]
Rated flow at 7 bar [100 psi]	45 l/min [12 US gal/min]
Weight	8.74 kg [19.74 lb]

ORDERING INFORMATION



DIMENSIONS

See next page.

Accessories
 X05-FD104

DIMENSIONS

mm [in]

