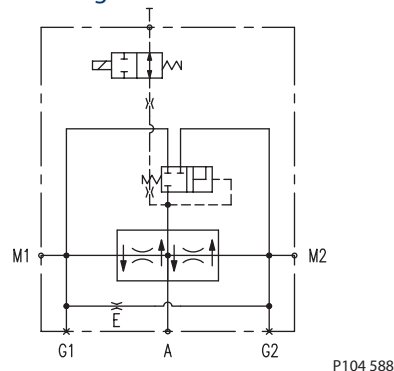


**OPERATION**

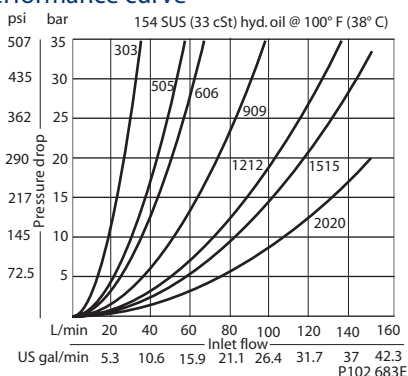
This valve provides electrically actuated traction control for hydrostatic systems with one pump and two motors in parallel. In normal operation, fluid passes freely through the valve. When the solenoid is energized, fluid is forced through the flow divider/combiner, preventing wheel spin or motor over speed.

**Schematic diagram**



**PERFORMANCE**

**Performance curve**

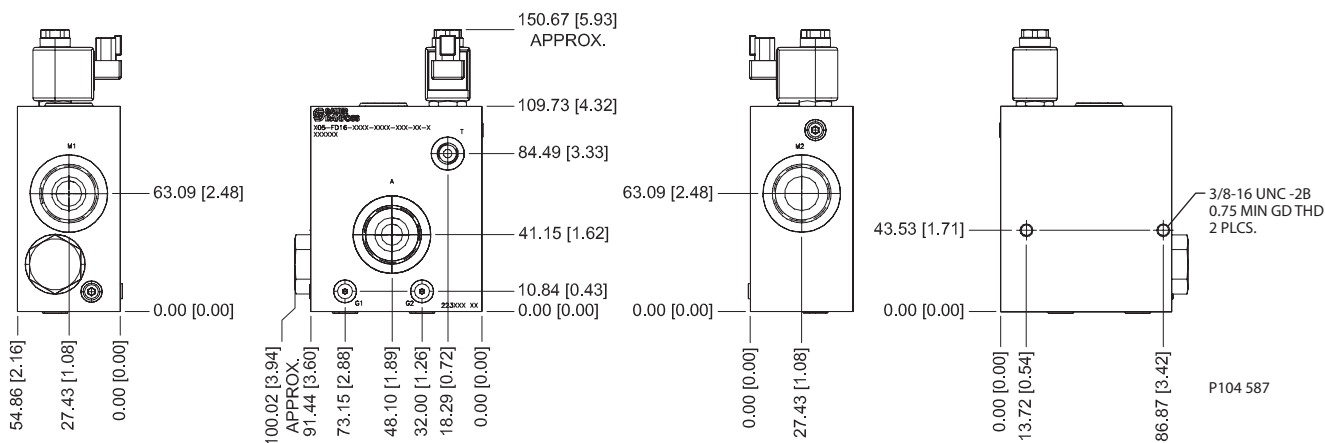


**Specifications**

<b>Rated pressure</b>	210 bar [3000 psi]
<b>Rated flow at 7 bar [100 psi]</b>	150 l/min [40 US gal/min]
<b>Weight</b>	4.48 kg [9.88 lb]

**DIMENSIONS**

mm [in]



**ORDERING INFORMATION**

