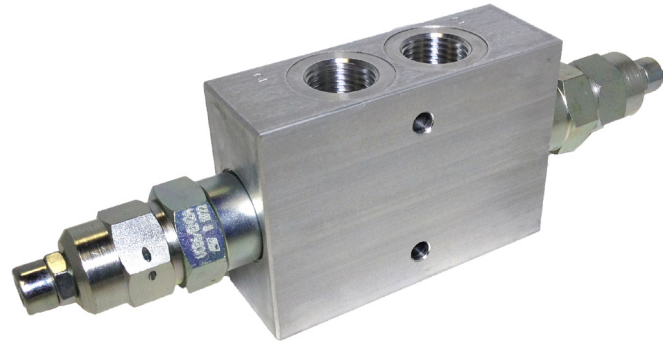


**OPERATION**

This is a dual counterbalance HIC, 6-size metric, hydraulically vented, internally-piloted, low leakage, with a nose to nose design. The VCB06-EN-DL allows free flow from the V ports to the C ports and blocks flow in the reverse direction until the relief setting is reached, or until adequate pilot pressure has been applied to the opposite V port.



**APPLICATIONS**

Use dual counterbalance HIC's for controlling loads in bidirectional motion such as wheel motor applications or for cylinders going over center. They are also suitable for use on the boom and dipper cylinder on an excavator.

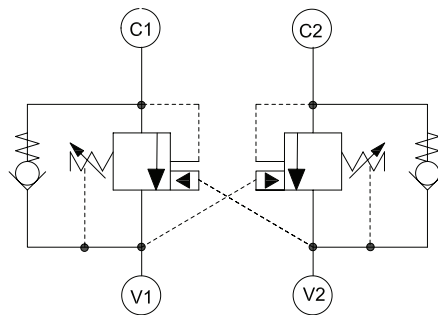
CB - Counterbalance Valves  
 VCB06-EN-DL

**SPECIFICATIONS**

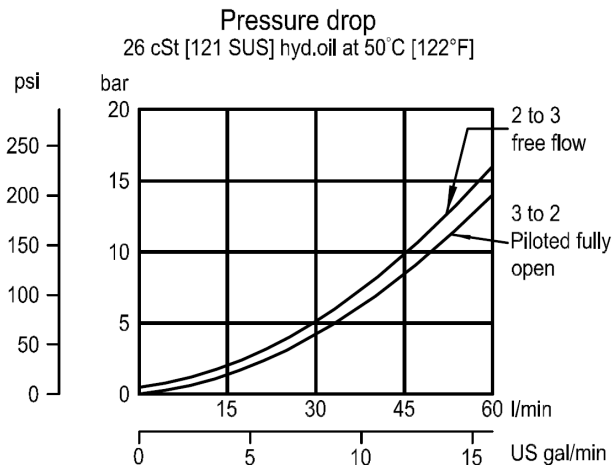
<b>Rated pressure</b>	350 bar [5075 psi]*
<b>Rated flow at 22 bar (319 psi)</b>	60 l/min [16 US gal/min]
<b>Leakage</b>	10 drops/min @ at 70% of crack pressure
<b>Weight</b>	1.02 kg [2.25 lb]
<b>Pilot ratio</b>	4.1:1, 7.1:1
<b>Cavity</b>	CIB

\* 350 bar with steel housing  
 210 bar with aluminum housing

**SCHEMATIC**

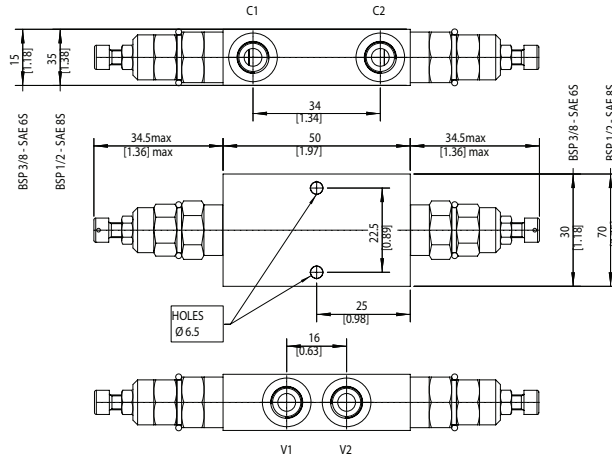


**PERFORMANCE**



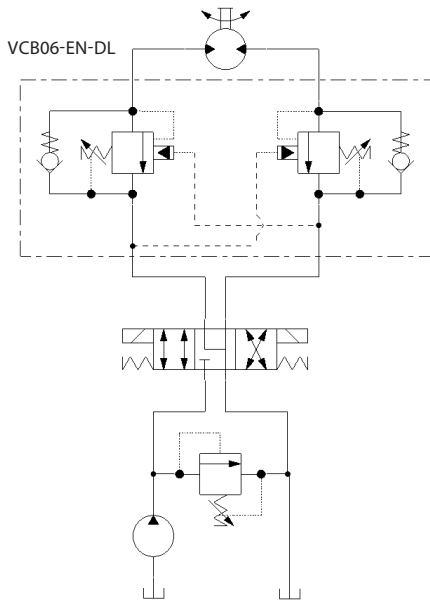
**DIMENSIONS**

mm [in]

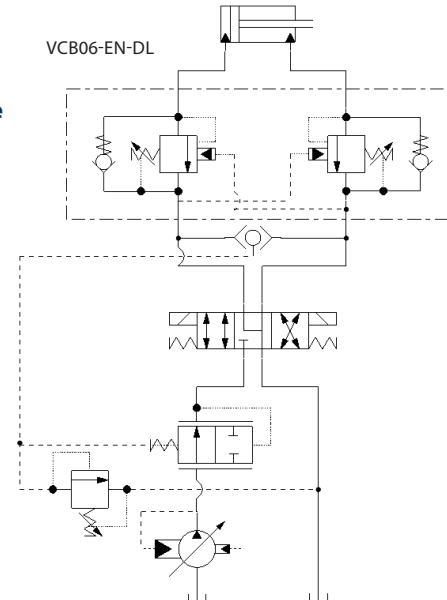


**EXAMPLE CIRCUITS**

**Bi-directional Counterbalance**



**Counterbalance with Pressure Limiting**



**ORDERING INFORMATION**

**VCB06 - EN - 2 - A - 00 - B - XXX**

Counterbalance Valve, Pilot Port 1, 06 size (metric), external adjustment, hydraulic vent

Crack Pressure Setting [in bar]  
 XXX: No factory setting/no stamping  
 For customer specified settings, enter value in bar (Example 70 bar=70; 125 bar=125 ect.)

Code	Pilot Ratio
1	25-140 [363-2030]
2	70-210 [1015-3045]
3	105-350 [1523-5075]

Seal Option	Seal Material	Seal kit
B	BUNA	230000070
V	VITON	230000110

Code	Pilot Ratio
A	7.1:1
B	4.1:1

Code	Ports & Material	Body Nomenclature
00	00 = Cartridge only	No Body
DL3B	AL, 3/8 BSP	NCS06/3-DL3/8
DL4B	AL, 1/2 BSP	NCS06/3-DL1/2
DL6S	AL, #6 SAE	NCS06/3-DL6S
DL8S	AL, #8 SAE	NCS06/3-DL8S

**CB - Counterbalance Valves**  
**CP448-1**