

OPERATION

DCB10-AV: Dual counterbalance HIC, 10-size, atmospheric vent. This HIC is low leakage and internally piloted. The DCB10-AV uses 2 CB10-AV 10-size cartridges and allows free flow from the V port to the C ports and blocks flow in the reverse direction until the relief setting is reached, or until adequate pilot pressure has been applied to the opposite V port.



APPLICATIONS

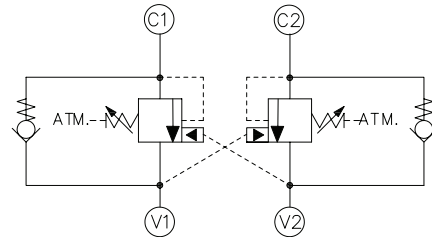
Atmospheric vented valves are applied when it is not practical to connect a separate vent line to the tank. Use dual counterbalance HIC's for controlling loads in bidirectional motion such as wheel motor applications or for cylinders going over center. They are also suitable for use on the boom and dipper cylinder on an excavator.

SPECIFICATIONS

| | |
|---------------------------------------|---|
| Rated pressure | 350 bar [5075 psi]* |
| Rated flow at 22 bar (319 psi) | 60 l/min [16 US gal/min] |
| Leakage | 10 drops/min @ at 70% of crack pressure |
| Weight | 0.90 kg [1.98 lb] |
| Pilot ratio | 3.0:1, 4.5:1, 10.0:1 |
| Cavity | CIB |

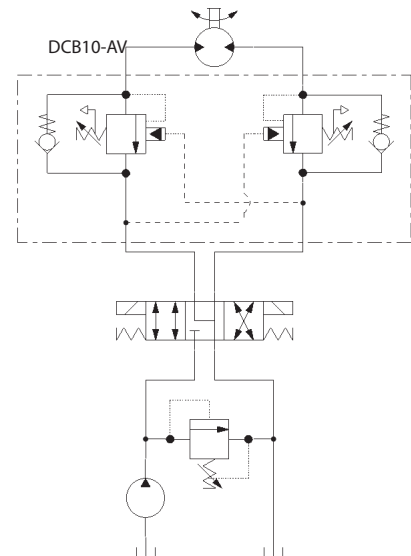
* 350 bar with steel housing
 210 bar with aluminum housing

SCHEMATIC

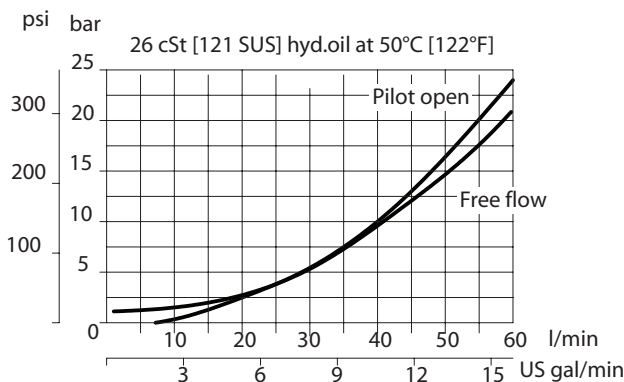


EXAMPLE CIRCUITS

Bi-directional Motor Control



PERFORMANCE

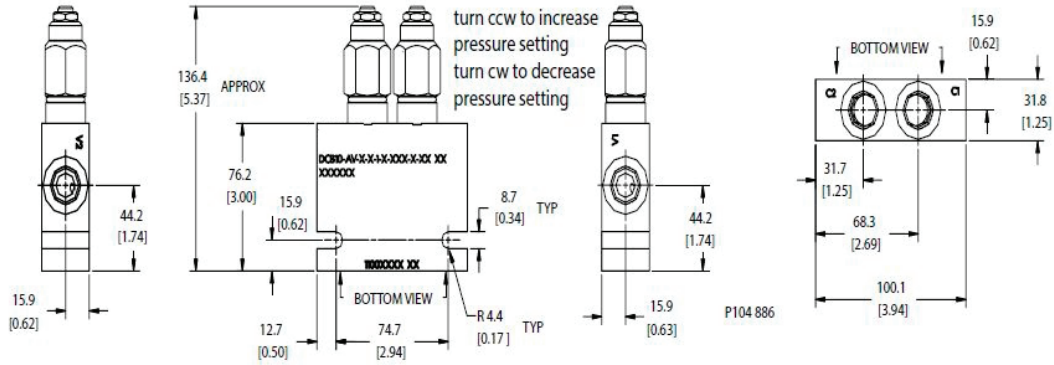


DIMENSIONS

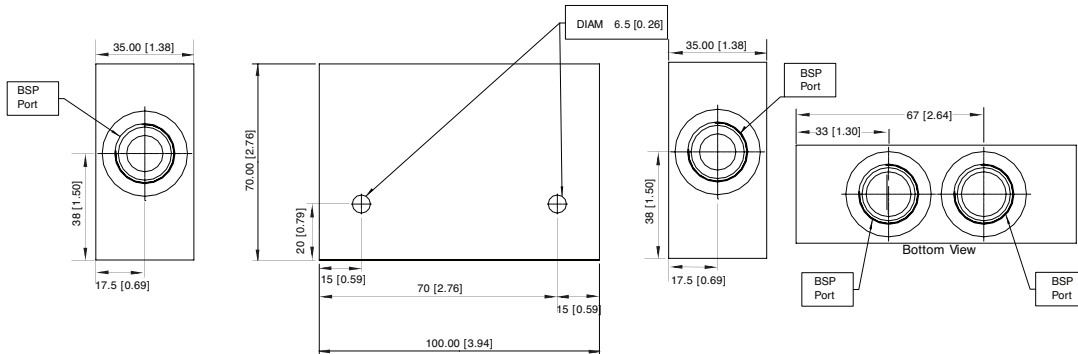
mm [in]

Cross-sectional view

SAE - Ported



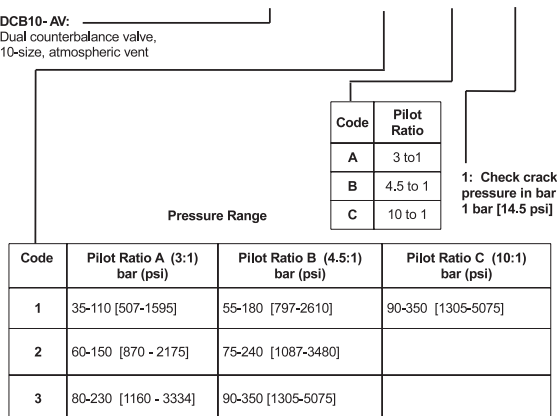
BSP Ported - (Body Only)



ORDERING INFORMATION

DCB10 - AV - 1 - A - 1 - E - XXX - B - 00

DCB10-AV:
Dual counterbalance valve,
10-size, atmospheric vent



| Code | Seal | Seal Kit |
|------|--------|----------|
| B | Buna-N | 11002672 |
| V | Viton | 11002673 |

| Housing & Ports | Housing P/N |
|----------------------|-------------|
| SE3B AL, 3/8 BSP | 922518510 |
| SE4B AL, 1/2 BSP | 922518610 |
| SES4B Steel, 1/2 BSP | 11034327 |
| 6S AL, #6 SAE | 11002669 |
| S6S Steel, #6 SAE | 11009170 |
| 8S AL, #8 SAE | 11001779 |
| S8S Steel, #8 SAE | 11009171 |

Pressure Setting [in bar]
XXX - No factory setting / no stamping

For customer specified settings, enter value in bar (Example 70 bar = 70; 125 bar = 125, etc.)

Adjustment type
E external adjustment
F tamper resistant