



Directional Control Valves Catalog

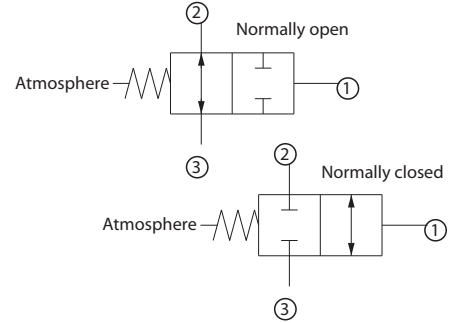
2-Position, 2-Way, Atmospheric Vent

CP713-1

OPERATION

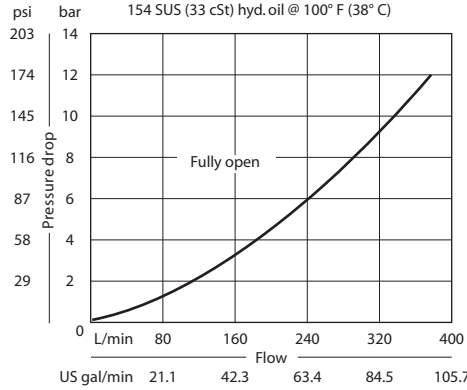
This valve is a hydraulically operated spool with atmospheric vent.

Schematic



SPECIFICATIONS

Theoretical performance



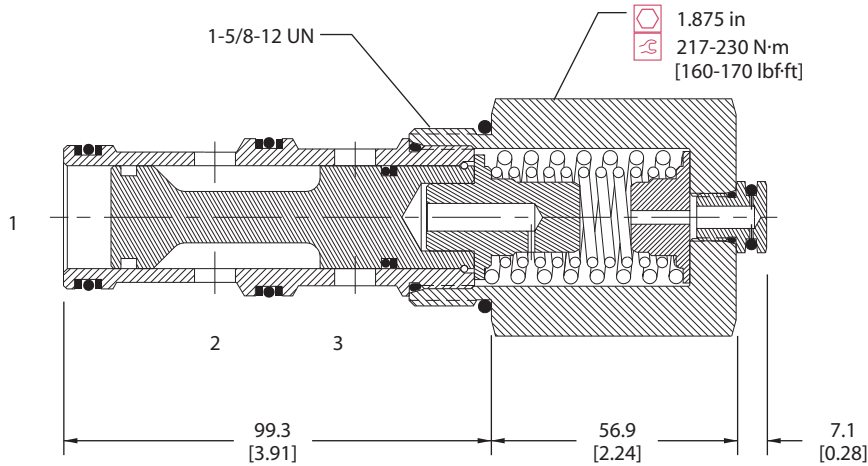
Specifications

Rated pressure	210 bar [3000 psi]
Rated flow at 7 bar [100 psi]	265 l/min [70 US gal/min]
Weight	1.26 kg [2.78 lb]
Cavity	SDC20-3

DIMENSIONS

mm [in]

Cross-sectional view



ORDERING INFORMATION

CP713 - 1 - B - 20S - C - 150 - S1

Seals
 B = Buna-N
 V = Viton
 Seal kit 120200
 120201

Housing and ports
 0 = No Housing
 8B = AL, 1 BSP
 10B = AL, 1-1/4 BSP
 16S = AL, #16 SAE
 20S = AL, #20 SAE
 Other housings available

Housing P/N
 No Housing
 CP20-3-8B
 CP20-3-10B
 CP20-3-16S
 CP20-3-20S

Shift pressure

Shift pressure (bar)	Shift pressure (psi)
050	3.5 [50]
080	5.5 [80]
100	6.9 [100]
130	9.0 [130]
150	10.3 [150]

Spool seals
 S1 = Seal at top of spool
 S2 = Seals at both ends of spool

Configuration
 O = Normally open
 C = Normally closed

DV - Directional Control Valves CP713-1