



Directional Control Valves Catalog

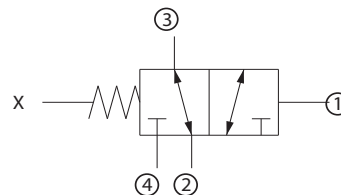
2-Position, 3-Way, External Pilot

CP720-2

OPERATION

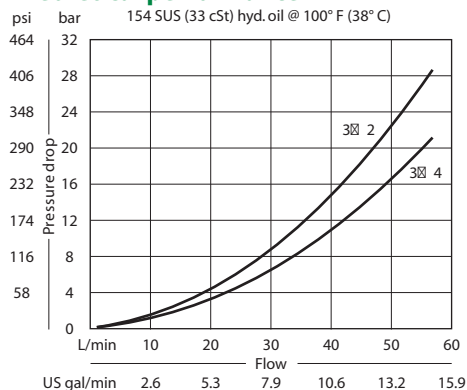
This valve is a 3-way double hydraulically piloted spool.

Schematic



SPECIFICATIONS

Theoretical performance



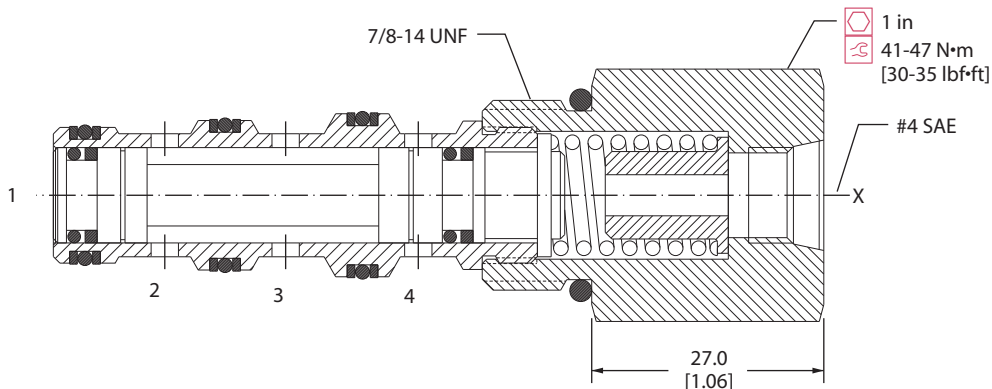
Specifications

| | |
|-------------------------------|-------------------------|
| Rated pressure | 210 bar [3000 psi] |
| Rated flow at 7 bar [100 psi] | 25 l/min [7 US gal/min] |
| Weight | 0.15 kg [0.33 lb] |
| Cavity | SDC10-4 |

DIMENSIONS

mm [in]

Cross-sectional view



ORDERING INFORMATION

CP720 - 2 - B - 4S - 150 - S1

| | | |
|--------------------------|--------------|---------------------------------|
| seals | Seal kit | Spool seals |
| B = Buna-N | 120023 | S1=Seal at top of spool |
| V = Viton | 120024 | S2=Seals at both ends of spool |
| | | S3= No seal |
| | | S4= Seals at bottom of spool |
| housing and ports | Housing P/N | Shift pressure |
| 0 = No Housing | No Housing | bar [psi] |
| L3B = AL, 3/8 BSP | SDC10-4-L-3B | 040 = 2.8 [40] |
| L4B = AL, 1/2 BSP | SDC10-4-L-4B | 050 = 3.5 [50] |
| 6S = AL, #6 SAE | CP10-4-6S | 080 = 5.5 [80] |
| 8S = AL, #8 SAE | CP10-4-8S | 125 = 8.6 [125] |
| Other housings available | | 150 = 10.3 [150] |
| | | shift pressure assumes no seals |

DV - Directional Control Valves
CP720-2