



# Directional Control Valves Catalog

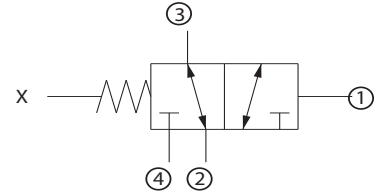
## 2-Position, 3-Way, External Pilot

### CP723-2

### OPERATION

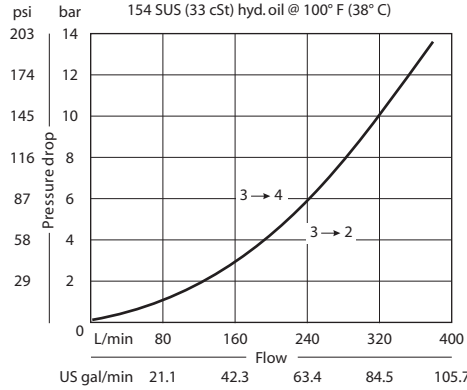
This valve is a 3-way double hydraulically piloted spool.

### Schematic



### SPECIFICATIONS

#### Theoretical performance



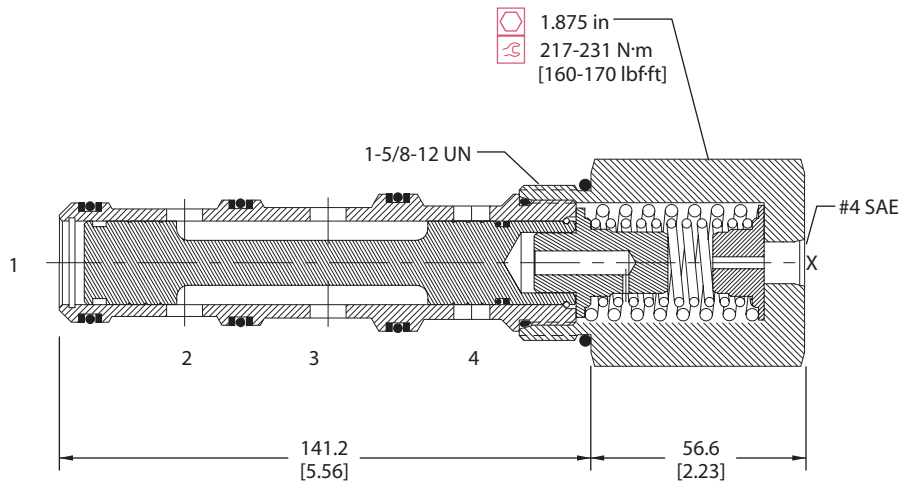
#### Specifications

Rated pressure	210 bar [3000 psi]
Rated flow at 7 bar [100 psi]	265 l/min [70 US gal/min]
Weight	1.22 kg [2.68 lb]
Cavity	SDC20-4

### DIMENSIONS

mm [in]

Cross-sectional view



### ORDERING INFORMATION

CP723 - 2 - B - 20S - 150 - S1

#### Seals

B = Buna-N  
V = Viton

#### Housing and ports

0 = No Housing  
8B = AL, 1 BSP  
10B = AL, 1-1/4 BSP  
16S = AL, #16 SAE  
20S = AL, #20 SAE  
Other housings available

#### Housing P/N

No Housing  
CP20-4-8B  
CP20-4-10B  
CP20-4-16S  
CP20-4-20S

#### Spool seals

S1 = Seal at top of spool  
S2 = Seals at top and bottom of spool  
S3 = No seals  
S4 = Seal at bottom of spool

#### Shift pressure

	bar	[psi]
050	3.5	[50]
080	5.5	[80]
100	6.9	[100]
130	9.0	[130]
150	10.3	[150]

shift pressure assumes no seals