



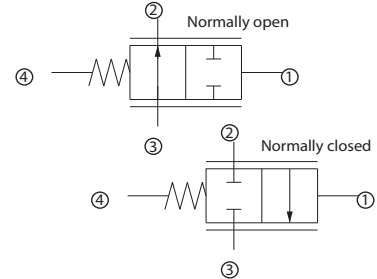
Directional Control Valves Catalog

Normally Closed/Open, Hydraulically Piloted, Proportional CP712-7

OPERATION

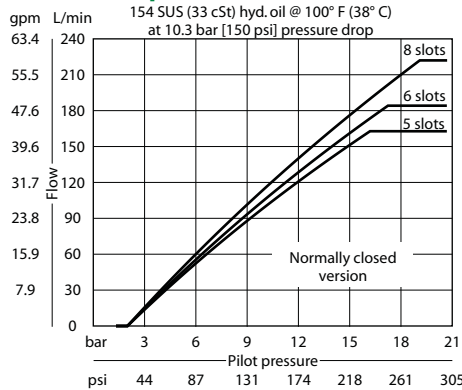
This valve is a hydraulically piloted proportional flow control.

Schematic



SPECIFICATIONS

Theoretical performance



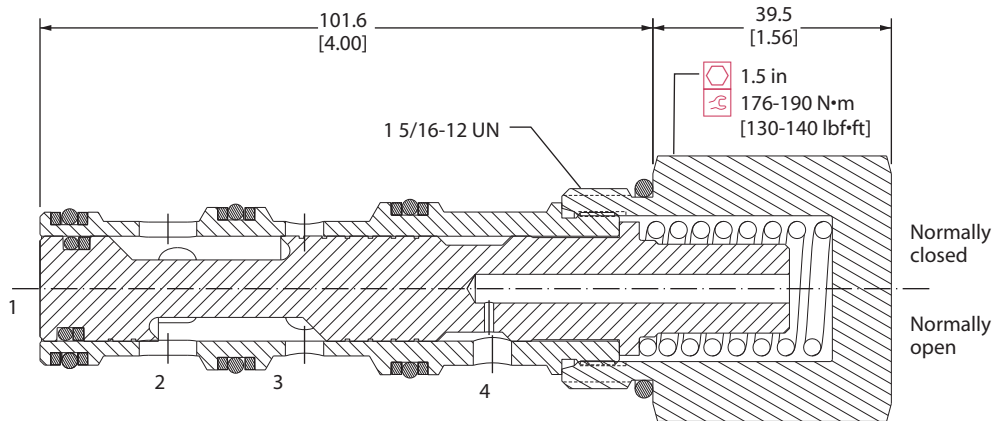
Specifications

Rated pressure	210 bar [3000 psi]
Rated flow at 10 bar [150 psi]	220 l/min [58 US gal/min]
Weight	0.61 kg [1.34 lb]
Cavity	CP16-4

DIMENSIONS

mm [in]

Cross-sectional view



ORDERING INFORMATION

CP712-7-B-12S-C-5-S4

Spool seal

- S3 = No spool seal
- S4 = With spool seal

Sleeve option

- 5 = 5 slots
- 6 = 6 slots
- 8 = 8 slots

Spool configuration

- C = Normally closed
- O = Normally open

Housing and ports

- 0 = No Housing
- 6B = AL, 3/4 BSP
- 8B = AL, 1 BSP
- 12S = AL, #12 SAE
- 16S = AL, #16 SAE

Seals

- B = Buna-N
- V = Viton

- Seal kit 120025
- Seal kit 120026

Housing P/N

- No Housing
- CP16-4-6B
- CP16-4-8B
- CP16-4-12S
- CP16-4-16S