



Directional Control Valves Catalog

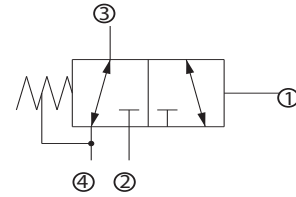
2-Position, 3-Way, Hydraulic Vent

CP720-5

OPERATION

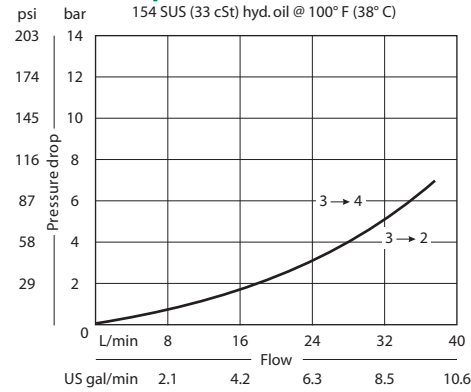
This valve is a 3-way hydraulically piloted spool.

Schematic



SPECIFICATIONS

Theoretical performance



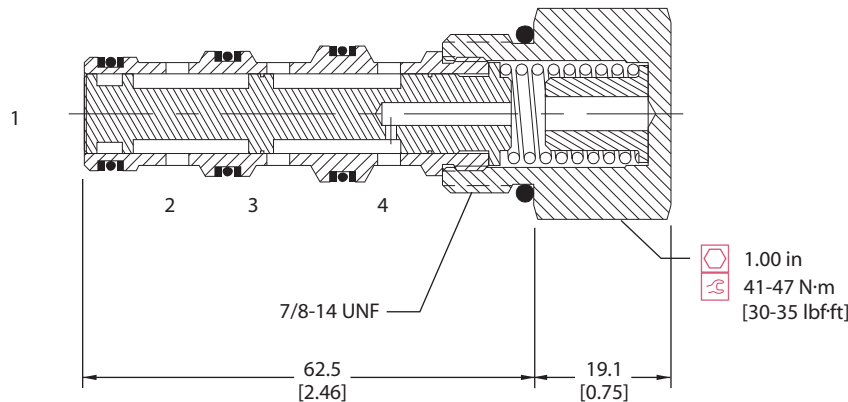
Specifications

Rated pressure	210 bar [3000 psi]
Rated flow at 7 bar [100 psi]	40 l/min [11 US gal/min]
Weight	0.15 kg [0.33 lb]
Cavity	SDC10-4

DIMENSIONS

mm [in]

Cross-sectional view



ORDERING INFORMATION

CP720 - 5 - B - 8S - 150 - S3

Seals

B = Buna-N
V = Viton

Seal kit
120023
120024

Housing and ports

0 = No Housing
L3B = AL, 3/8 BSP
L4B = AL, 1/2 BSP
6S = AL, #6 SAE
8S = AL, #8 SAE
Other housings available

Housing P/N

No Housing
SDC10-4-L-3B
SDC10-4-L-4B
CP10-4-6S
CP10-4-8S

Spool seals

S3 = No seal
S4 = Seal at bottom of spool

Shift pressure

	bar	[psi]
050	3.5	[50]
080	5.5	[80]
125	8.6	[125]
150	10.3	[150]

shift pressure assumes no seals

DV - Directional Control Valves
CP720-5