



Directional Control Valves Catalog

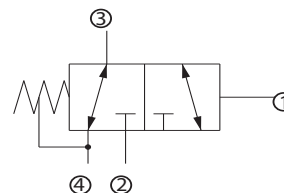
2-Position, 3-Way, Hydraulic Vent

CP722-11

OPERATION

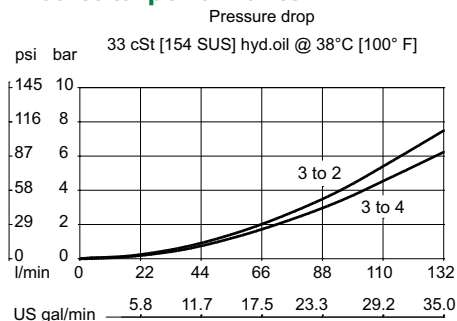
This valve is a 3-way hydraulically-piloted spool.

Schematic



SPECIFICATIONS

Theoretical performance



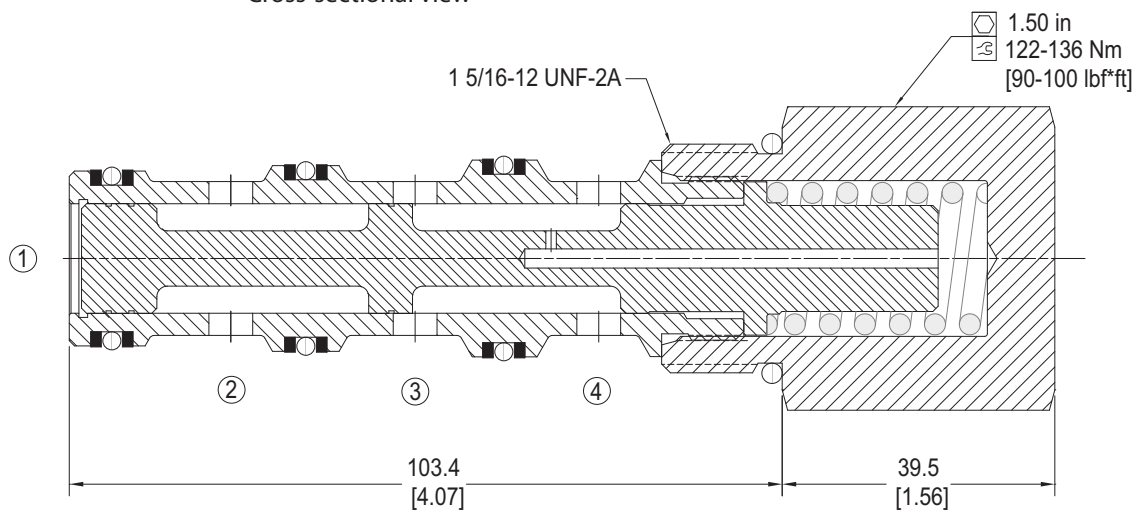
Specifications

| | |
|-------------------------------|--|
| Rated pressure | 450 bar [6500 psi] |
| Rated flow at 7 bar [100 psi] | 125 l/min [33 US gal/min] |
| Leakage | 164 cm ³ /min [10 in ³ /min] @ Oil temperature range -20° to 80°C [-4° to 180°F] |
| Weight | 0.61 kg [1.34 lb] |
| Cavity | CP16-4 |

DIMENSIONS

mm [in]

Cross-sectional view



ORDERING INFORMATION

CP722 - 11 - U - 12S - 040

Seals
U = Urethane
Seal kit Consult Factory

Body and ports
0 = Cartridge
12S = Aluminum, #12 SAE
16S = Aluminum, #16 SAE
S12S = Steel, #12 SAE
S16S = Steel, # 16 SAE

Body P/N
No body CP16-4-12S
CP16-4-16S
223494
223495

Shift pressure
040 = 2.8 bar [40 psi]
080 = 5.5 bar [80 psi]

DV - Directional Control Valves CP722-11