



Directional Control Valves Catalog

4 Way, 2 Position Hydraulic Piloted DV15-P5-24-FD

OPERATION

The DV15-P5-24-FD is a normally open, 5-ported piloted directional control valve, 2-position, 4-way, 15-size. It is shifted by applying pilot pressure to port 5. In the normal position, flow is allowed between ports 3 and 4, and ports 2 to port 1. During transition, flow is temporarily allowed between all four ports. When fully shifted flow is allowed ports 3 to 2, and ports 4 to port 1.



APPLICATIONS

This valve is primarily used for reversing fan drive circuits where the open-transition design is important for smooth shifting and minimal pressure spikes during reversing. The valve can be piloted with many 2-way valves including solenoid, sequence, relief or manual valves with the internal pilot drain orifice option. Alternatively, it can also be piloted with a 2-position, 3-way solenoid valve using the internal pilot drain plug option.

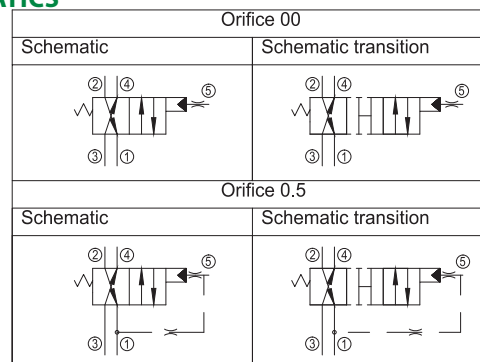
DV - Directional Control Valves
DV15-P5-24-FD

SPECIFICATIONS

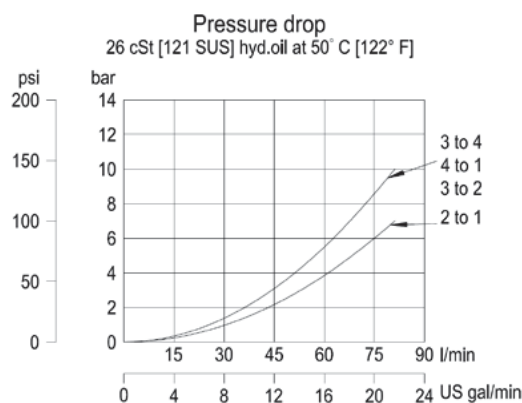
Rated Pressure*	230 bar [3335 psi]
Rated Flow at 7 bar [100 psi]	70 l/min [18.4 US gal/min]
Maximum Rated Flow	80 l/min [21.1 US gal/min]
Minimum pilot pressure	2 bar [29 psi]
Weight	0.44 kg [0.95 lbs]
Cavity	NCS12/5

* Rated Pressure based on NFPA fatigue test standards (at 1 Million Cycles).

SCHEMATICS



PERFORMANCE CURVE



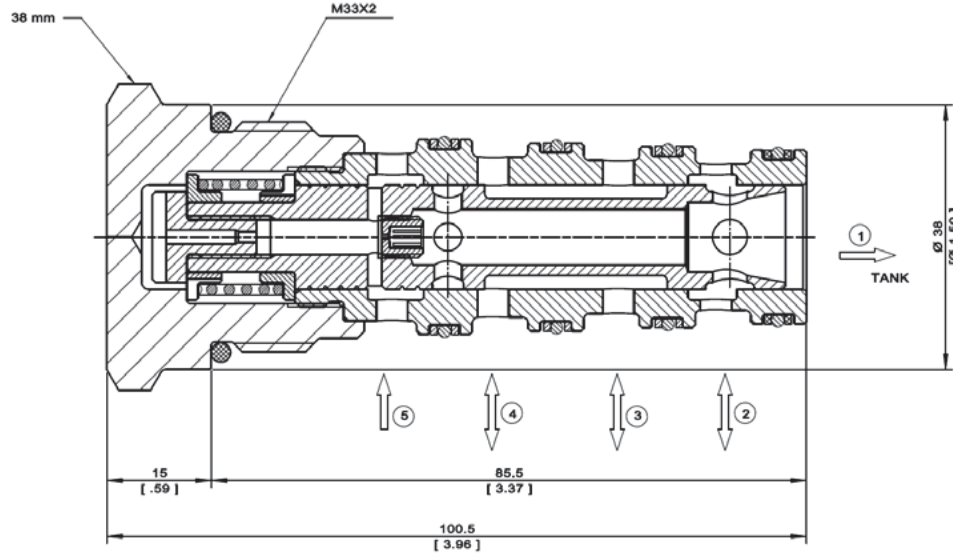


Directional Control Valves Catalog

4 Way, 2 Position Hydraulic Piloted

DV15-P5-24-FD

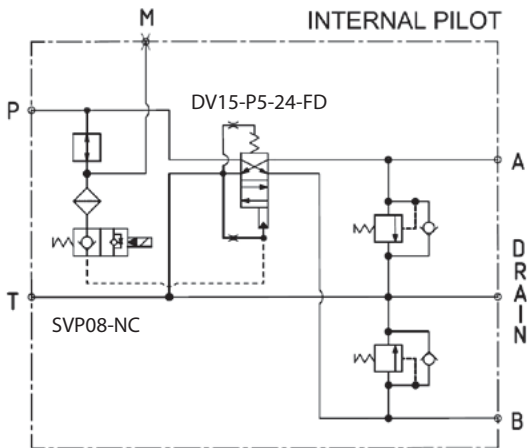
DIMENSIONS



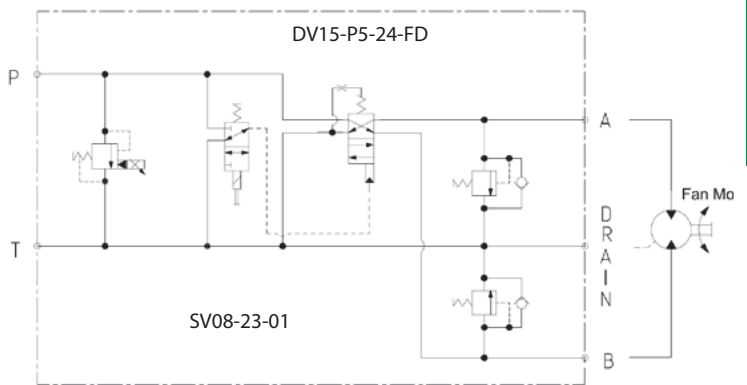
EXAMPLE CIRCUITS

Reversing Fan Drive Circuits

Piloted with 2-way valve and internal pilot drain orifice option



Piloted with 3-way valve and internal pilot drain plug option



ORDERING INFORMATION

DV15 - P5 - 24 - FD - 0.5 - B - 2 - 12S

DV15: Directional Control Valve, Hydraulically Piloted, 15 Size

P5: Piloted, Port 5

24: 2 Position, 4-way

FD: Schematic: Fan Drive

Code	Orifice/Plug for Pilot Drain
00	Plug
0.5	0.5 mm

Housing & Ports	Housing P/N
6B: 3/4 BSP [P5 - 3/8 BSP]	NCS12/5 - 6B/3B
12S: #12 SAE [P5 - #6 SAE]	NCS12/5 - 12S/6S

Pilot Shift Pressure
2: 2 bar [29 psi]

Code	Seal Material
B	Buna
V	Viton

DV - Directional Control Valves
DV15-P5-24-FD