

Directional Control Valves Catalog

4 Way, 2 Position Hydraulic Piloted DV15-P5-24-08

OPERATION

The DV15-P5-24-08 is a 5-ported piloted directional control valve, 2-position, 4-way, 15-size. It is shifted by applying pilot pressure to port 5. When the DV15-P5-24-08 is in the normal position, port 3 is blocked while flow is allowed between ports 2, 4 and 1. During transition, flow is allowed between all four ports. When the spool is fully shifted, flow is allowed from ports 3 to 2, and ports 4 to 1.



APPLICATIONS

Use this valve for applications including motor free wheel operation. The valve can be piloted with many 2-way valves including solenoid, sequence, relief or manual valves with the internal pilot drain orifice option. Alternatively, it can also be piloted with a 2-position, 3-way solenoid valve using the internal pilot drain plug option.

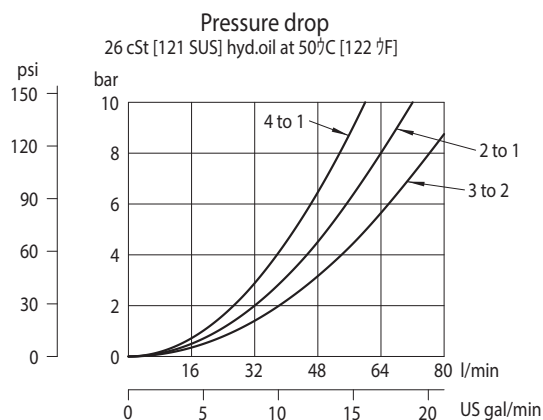
DIMENSIONS

SPECIFICATIONS

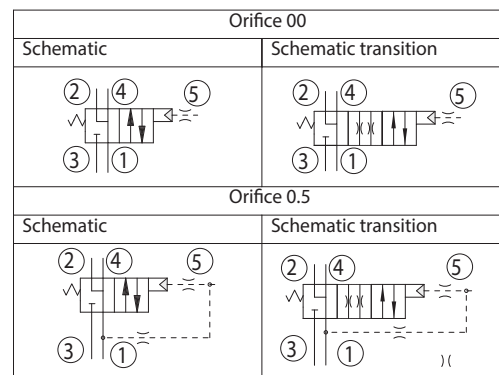
Rated Pressure*	230 bar [3335 psi]
Rated Flow at 7 bar [100 psi]	70 l/min [18.4 US gal/min]
Maximum Rated Flow	80 l/min [21.1 US gal/min]
Minimum pilot pressure	2 bar [29 psi]
Weight	0.44 kg [0.95 lbs]
Cavity	NCS12/5

* Rated Pressure based on NFPA fatigue test standards (at 1 Million Cycles).

PERFORMANCE CURVE



SCHEMATICS



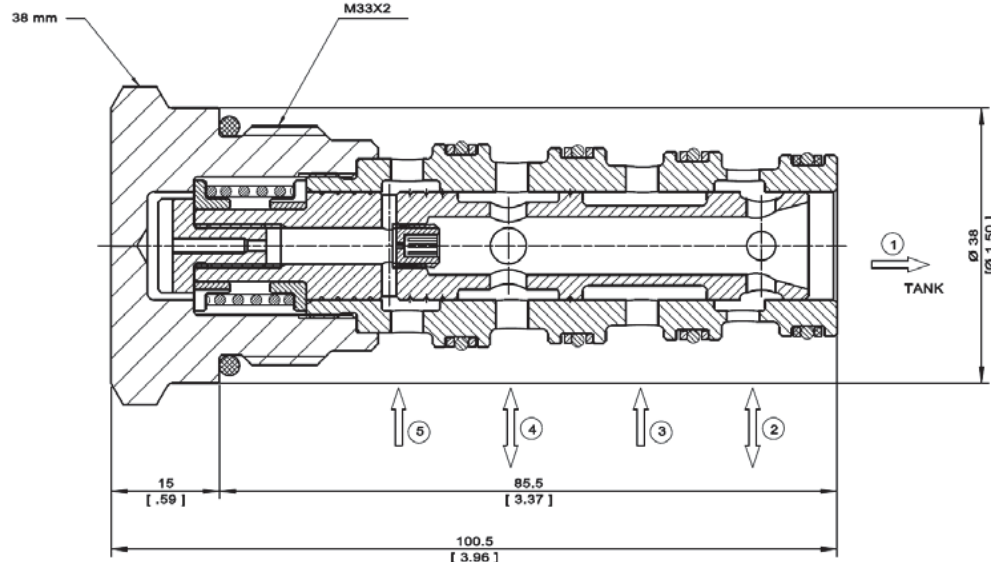


Directional Control Valves Catalog

4 Way, 2 Position Hydraulic Piloted

DV15-P5-24-08

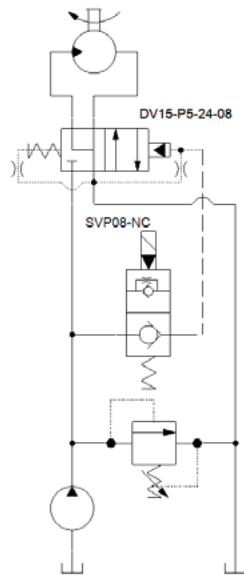
DIMENSIONS



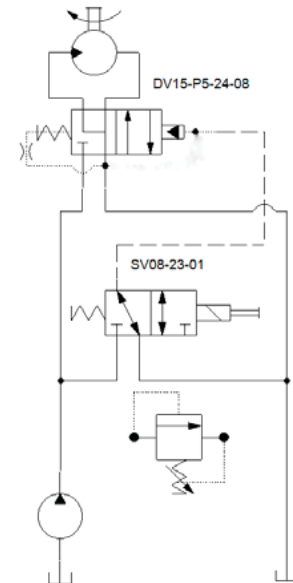
EXAMPLE CIRCUITS

Free Wheel Motor Control

Piloted with 2-way valve and internal pilot drain orifice option



Piloted with 3-way valve and internal pilot drain plug option



ORDERING INFORMATION

DV15 - P5 - 24 - 08 - 0.5 - B - 2 - 12S

<p>DV15: Directional Control Valve, Hydraulically Piloted, 15 Size</p> <p>P5: Piloted, Port 5</p> <p>24: 2 Position, 4-way</p> <p>08: Schematic Type</p>	<table border="1"> <thead> <tr> <th>Code</th> <th>Orifice/ Plug for Pilot Drain</th> </tr> </thead> <tbody> <tr> <td>00</td> <td>Plug</td> </tr> <tr> <td>0.5</td> <td>0.5 mm</td> </tr> </tbody> </table>	Code	Orifice/ Plug for Pilot Drain	00	Plug	0.5	0.5 mm	<table border="1"> <thead> <tr> <th>Code</th> <th>Seal Material</th> </tr> </thead> <tbody> <tr> <td>B</td> <td>Buna</td> </tr> <tr> <td>V</td> <td>Viton</td> </tr> </tbody> </table>	Code	Seal Material	B	Buna	V	Viton	<table border="1"> <thead> <tr> <th>Housing & Ports</th> <th>Housing P/N</th> </tr> </thead> <tbody> <tr> <td>6B: 3/4 BSP [P5 - 3/8 BSP]</td> <td>NCS12/5 - 6B/3B</td> </tr> <tr> <td>12S: #12 SAE [P5 - #6 SAE]</td> <td>NCS12/5 - 12S/6S</td> </tr> </tbody> </table> <p>Pilot Shift Pressure 2: 2 bar (29 psi)</p>	Housing & Ports	Housing P/N	6B: 3/4 BSP [P5 - 3/8 BSP]	NCS12/5 - 6B/3B	12S: #12 SAE [P5 - #6 SAE]	NCS12/5 - 12S/6S
Code	Orifice/ Plug for Pilot Drain																				
00	Plug																				
0.5	0.5 mm																				
Code	Seal Material																				
B	Buna																				
V	Viton																				
Housing & Ports	Housing P/N																				
6B: 3/4 BSP [P5 - 3/8 BSP]	NCS12/5 - 6B/3B																				
12S: #12 SAE [P5 - #6 SAE]	NCS12/5 - 12S/6S																				

DV - Directional Control Valves
DV15-P5-24-08