



Directional Control Valves Catalog

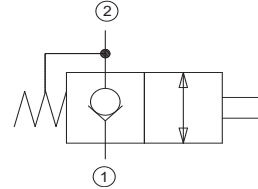
Directional Mechanical, Poppet, Normally Closed

DMP08-NC

OPERATION

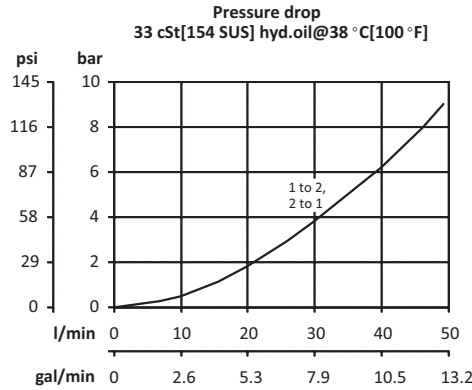
This valve is a normally closed, manually operated, poppet type valve with free reverse flow..

Schematic



SPECIFICATIONS

Theoretical performance



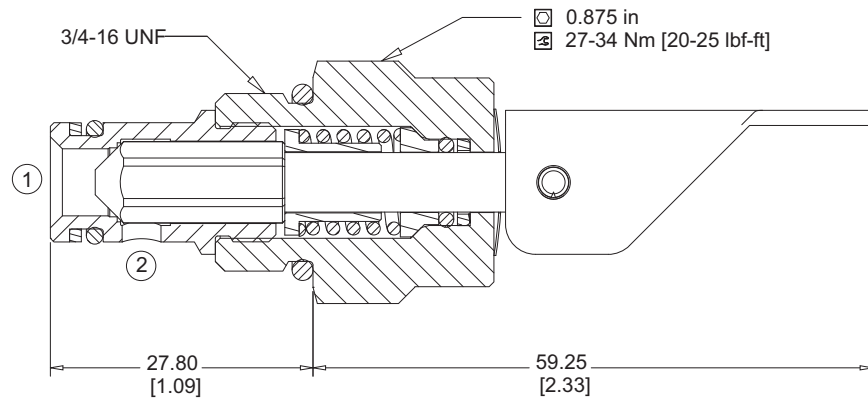
Specifications

Rated pressure	207 bar [3000 psi]
Rated flow at 7 bar [100 psi]	48 l/min [12.7 US gal/min]
Leakage	6 drops/min @ Rated pressure
Weight	0.12 kg [0.27 lb]
Cavity	SDC08-2

DIMENSIONS

mm [in]

Cross-sectional view



ORDERING INFORMATION

DMP08-NC-18-LD-B-00

Shift Force
18 = 18 N [4 lbf]

Handle Option
LD = Detented Lever

Housing and ports
00 = No Housing
DG-2B = Al, 1/4 BSP
DG-3B = Al, 3/8 BSP
4S = Al, #4 SAE
6S = Al, #6 SAE

Housing Part #
No Housing
SDC08-2-DG-2B
SDC08-2-DG-3B
CP08-2-4S
CP08-2-6S

Seals
B = Buna-N
V = Viton

Seal Kit
120221
120222

DV - Directional Control Valves
DMP08-NC