



# Directional Control Valves Catalog

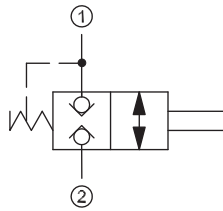
## Directional Mechanical, Poppet, Push to Open

### CE 06

#### OPERATION

This is a normally-closed, manually-operated, bi-directional poppet valve.

#### Schematic

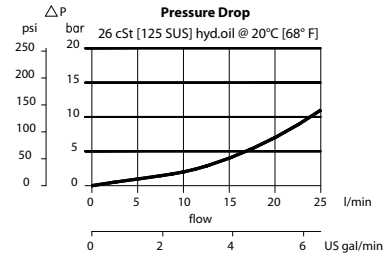


#### SPECIFICATIONS

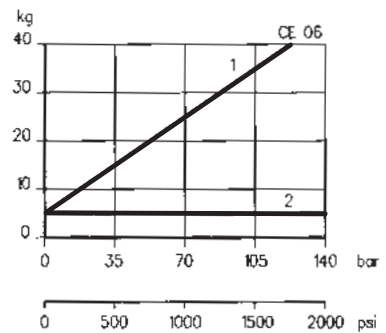
#### Specifications

Rated pressure	315 bar [4500 psi]
Rated flow at 7 bar [100 psi]	20 l/min [5 US gal/min]
Weight	0.20 kg [0.44 lb]
Cavity	NCS06/2

#### Theoretical performance

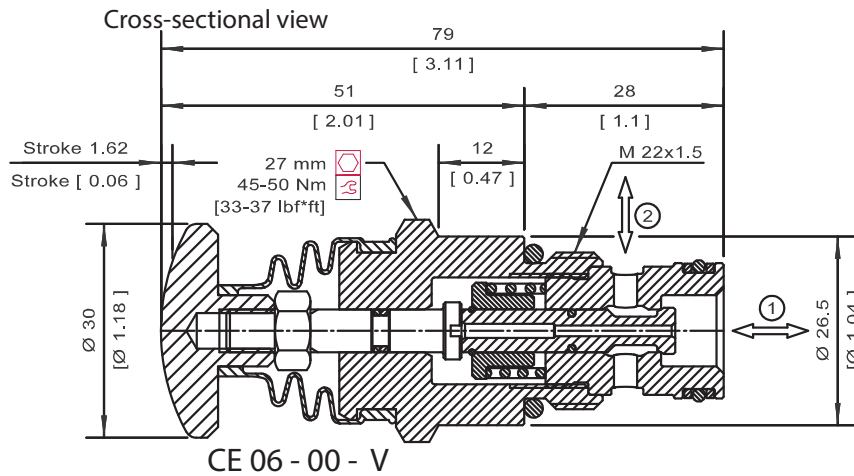


#### Force required to operate override



#### DIMENSIONS

mm [in]



#### ORDERING INFORMATION

CE 06 - 00 - V

**Seals**  
 V = Viton Seal kit 230000380  
 Omit = Buna-N Seal kit 230000060

**Housing and ports**  
 00 = No Housing  
 DG3/8 = AL, 3/8 BSP  
 DG1/2 = AL, 1/2 BSP  
 DG6S = AL, #6 SAE  
 DG8S = AL, #8 SAE  
 Other housings available

**Housing P/N**  
 No Housing  
 NCS06/2-DG-3/8  
 NCS06/2-DG-1/2  
 NCS06/2-DG-6S  
 NCS06/2-DG-8S